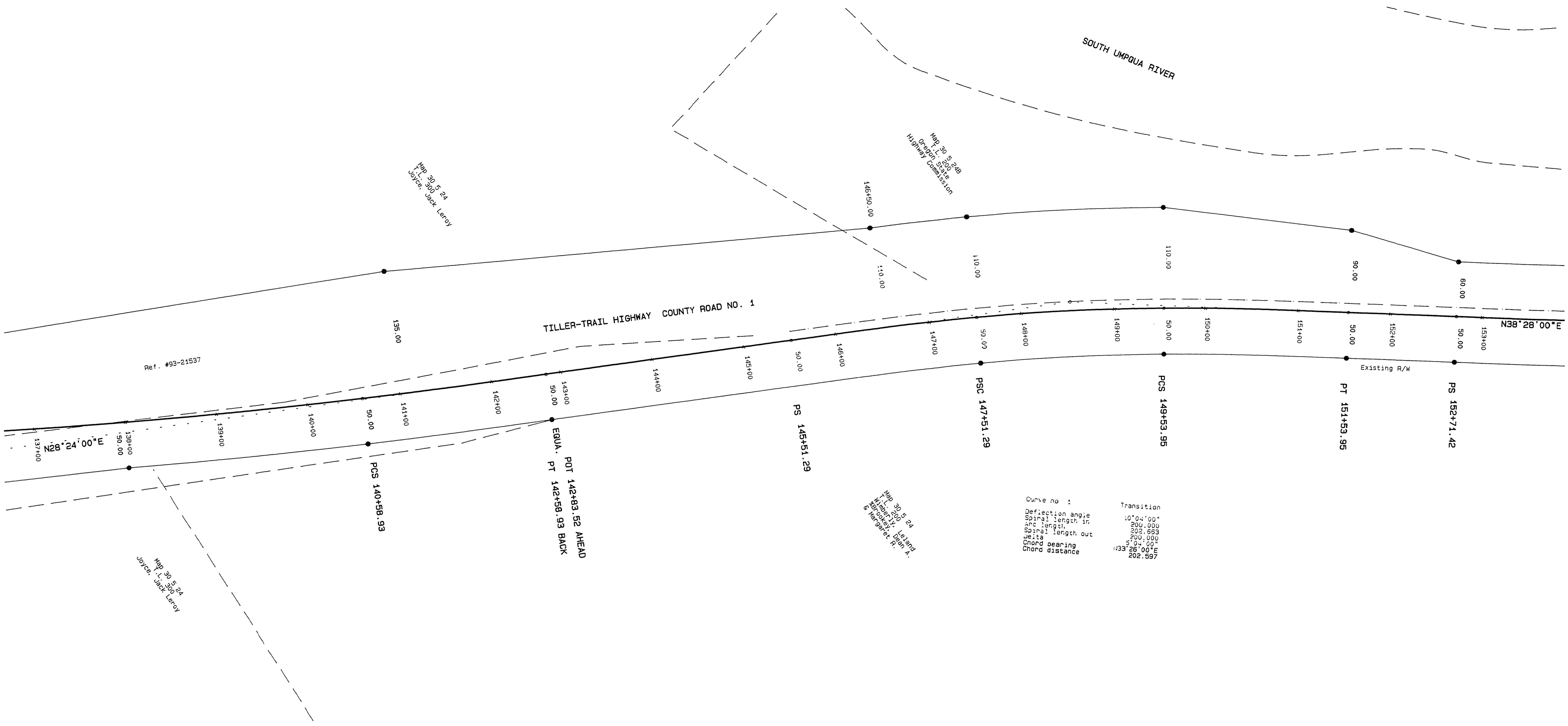


Right-of-Way Survey of Douglas County Road No. 1  
 In NW & NE 1/4, Sec. 26, NW 1/4, Sec. 25,  
 SW, NW, & NE 1/4, Sec. 24, T. 30 S., R. 5 W. W.M.  
 for Douglas County Department of Public Works  
 30 NOV 1994

FILED  
 Date: 1-19-95 By: J.C.  
 This survey consists of:  
 Map: CO. RD. # 1 9 sheets  
 Narrative:  
 Corner Rpt:  
 DOUGLAS COUNTY  
 SURVEYOR

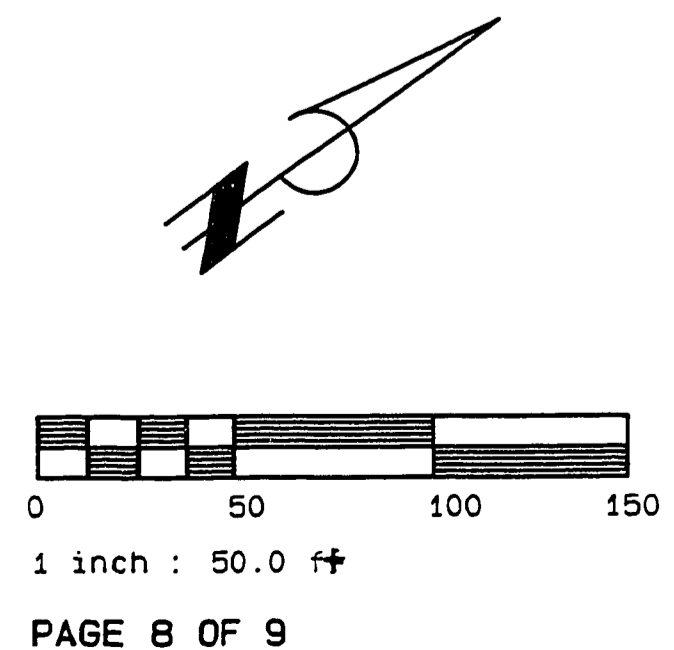


Curve no :	Transition
Deflection angle	40°04'00"
Spiral length in	200.000
arc length	202.683
Spiral length out	200.000
Delta	5°04'00"
Chord bearing	N33°26'00"E
Chord distance	202.597

- LEGEND:
- Found monument as noted.
  - Set 5/8" x 30" Iron Rod with Yellow Plastic Cap marked "AA SURVEYING INC.
  - Calculated Point. No monumentation.

NOTE: Coordinates are a local coordinate system based on Federal Highway Administration control survey. Bearings are based on this Coordinate system. Record information is available from:  
 U.S. Department of Transportation  
 Federal Highway Administration  
 Western Federal Lands Highway Division  
 530 E Fifth Street  
 Vancouver, WA 98661

REGISTERED  
 PROFESSIONAL  
 LAND SURVEYOR  
 RONALD A. QUIMBY  
 JULY 14, 1978  
 1984  
 EXP 12/31/94



COUNTY SURVEYORS FILE DATA  
 DO NOT REMOVE FROM OFFICE

05860618