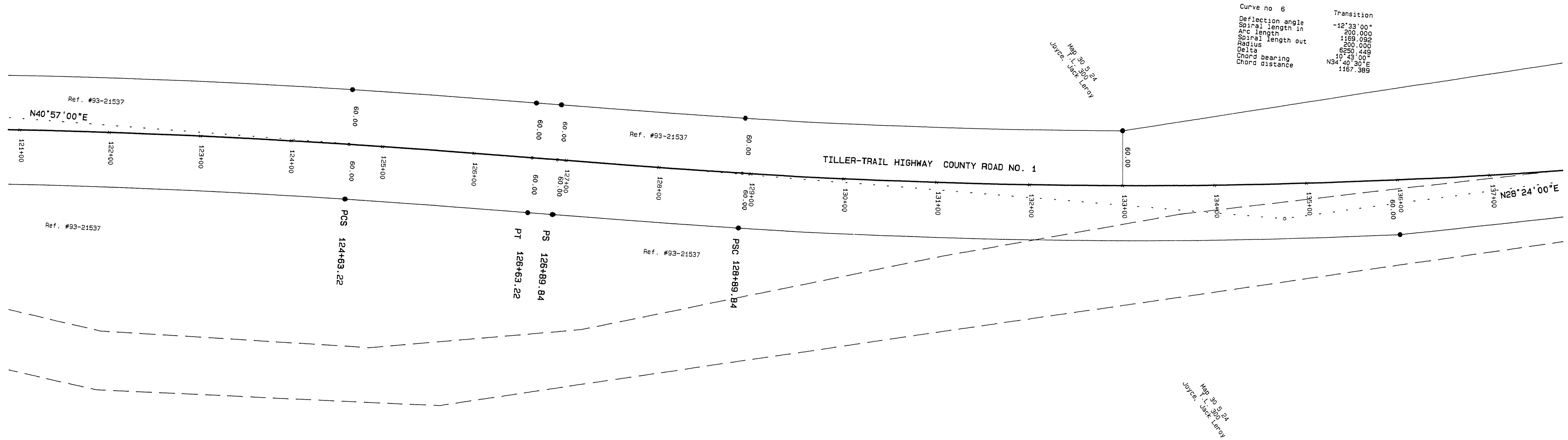


Right-of-Way Survey of Douglas County Road No. 1
 In NW & NE 1/4, Sec. 26, NW 1/4, Sec. 25,
 SW, NW, & NE 1/4, Sec. 24, T. 30 S., R. 5 W. W.M.
 for Douglas County Department of Public Works
 30 NOV 1994

FILED
 Date: 1-19-95 By: JC
 This survey consists of:
 Map: CO. RD. # 1 & 2
 Narrative:
 Corner Rpt:
 DOUGLAS COUNTY
 SURVEYOR

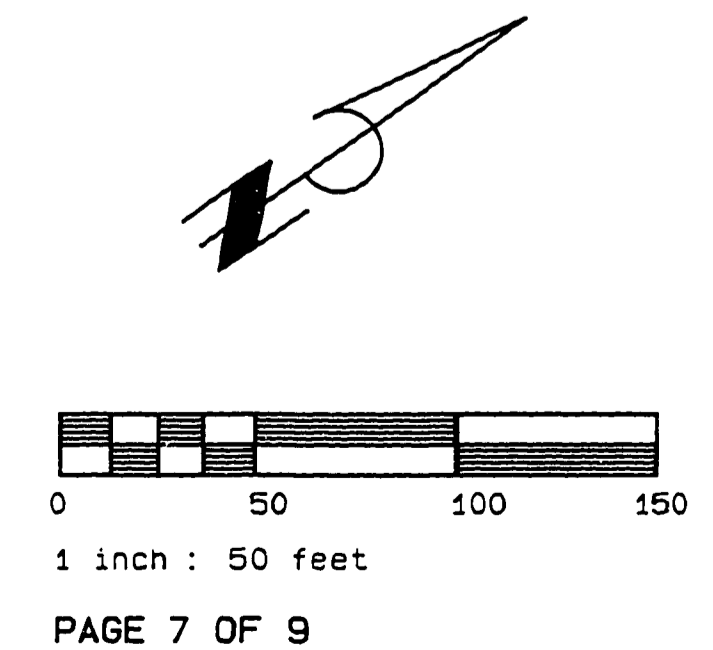
Curve no 6	Transition
Deflection angle	-12°33'00"
Spiral length in	200.000
Arc length	4169.032
Spiral length out	200.000
Radius	6250.449
Delta	10°45'00"
Chord bearing	N34°40'30"E
Chord distance	1167.389



- LEGEND:
- Found monument as noted.
 - Set 5/8" x 30" Iron Rod with Yellow Plastic Cap marked "AA SURVEYING INC."
 - Calculated Point, No monumentation.

NOTE: Coordinates are a local coordinate system based on Federal Highway Administration control survey. Bearings are based on this Coordinate system. Record information is available from:
 U.S. Department of Transportation
 Federal Highway Administration
 Western Federal Lands Highway Division
 610 E Fifth Street
 Vancouver, WA 98661

REGISTERED
 PROFESSIONAL
 LAND SURVEYOR
 RONALD A. QUIMBY
 1954
 EXP 12/31/94



COUNTY SURVEYORS FILE DATA
 DO NOT REMOVE FROM OFFICE
 M.P. 5.58-5.86

CO. RD. # 1

05580586