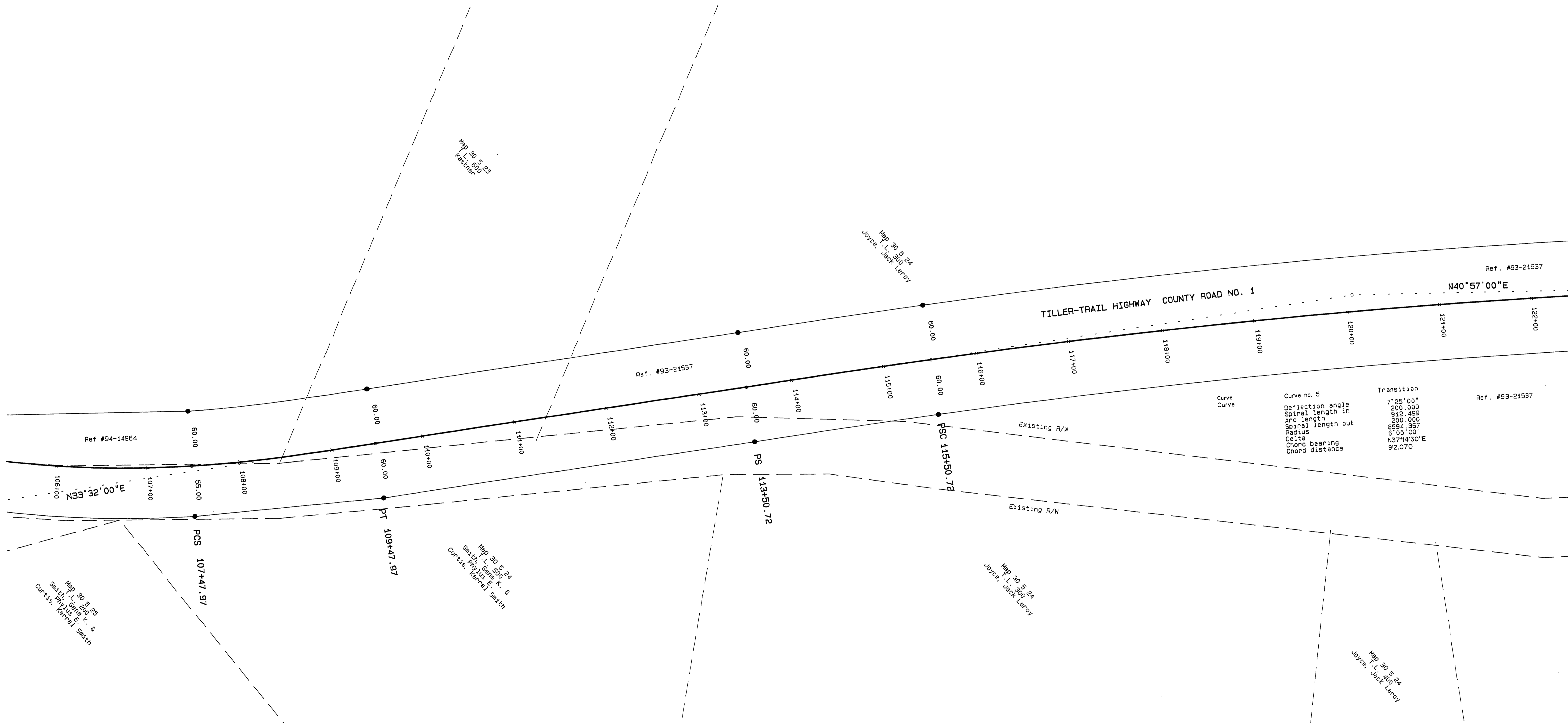


Right-of-Way Survey of Douglas County Road No. 1
 In NW & NE 1/4, Sec. 26, NW 1/4, Sec. 25,
 SW, NW, & NE 1/4, Sec. 24, T. 30 S., R. 5 W. W.M.
 for Douglas County Department of Public Works
 30 NOV 1994

FILED
 Date: 1-19-95 By: JC
 This survey consists of:
 Map: CO. RD. #1 962-1
 Narrative:
 Corner Rpt:

DOUGLAS COUNTY
 SURVEYOR

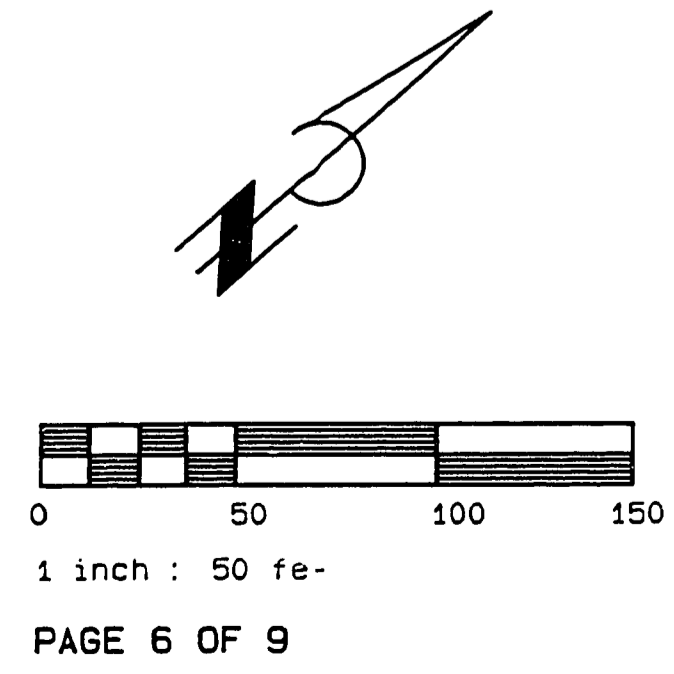


Curve	Transition
Curve no. 5	7°25'00"
Deflection angle	200.000
Spiral length in	312.499
Arc length	200.000
Spiral length out	894.367
Radius	6°05'00"
Delta	N37°14'30"E
Chord bearing	912.070
Chord distance	

- LEGEND:
- Found monument as noted.
 - Set 5/8" x 30" Iron Rod with Yellow Plastic Cap marked "AA SURVEYING INC"
 - Calculated Point. No monumentation.

NOTE: Coordinates are a local coordinate system based on Federal Highway Administration control survey. Bearings are based on this Coordinate system. Record information is available from:
 U.S. Department of Transportation
 Federal Highway Administration
 Western Federal Lands Highway Division
 610 E Fifth Street
 Vancouver, WA 98661

REGISTERED
 PROFESSIONAL
 LAND SURVEYOR
 RONALD A. GUMBY
 JULY 14, 1978
 1654
 EXP 12/31/94



COUNTY SURVEYORS FILE DATA
 DO NOT REMOVE FROM OFFICE

05280558