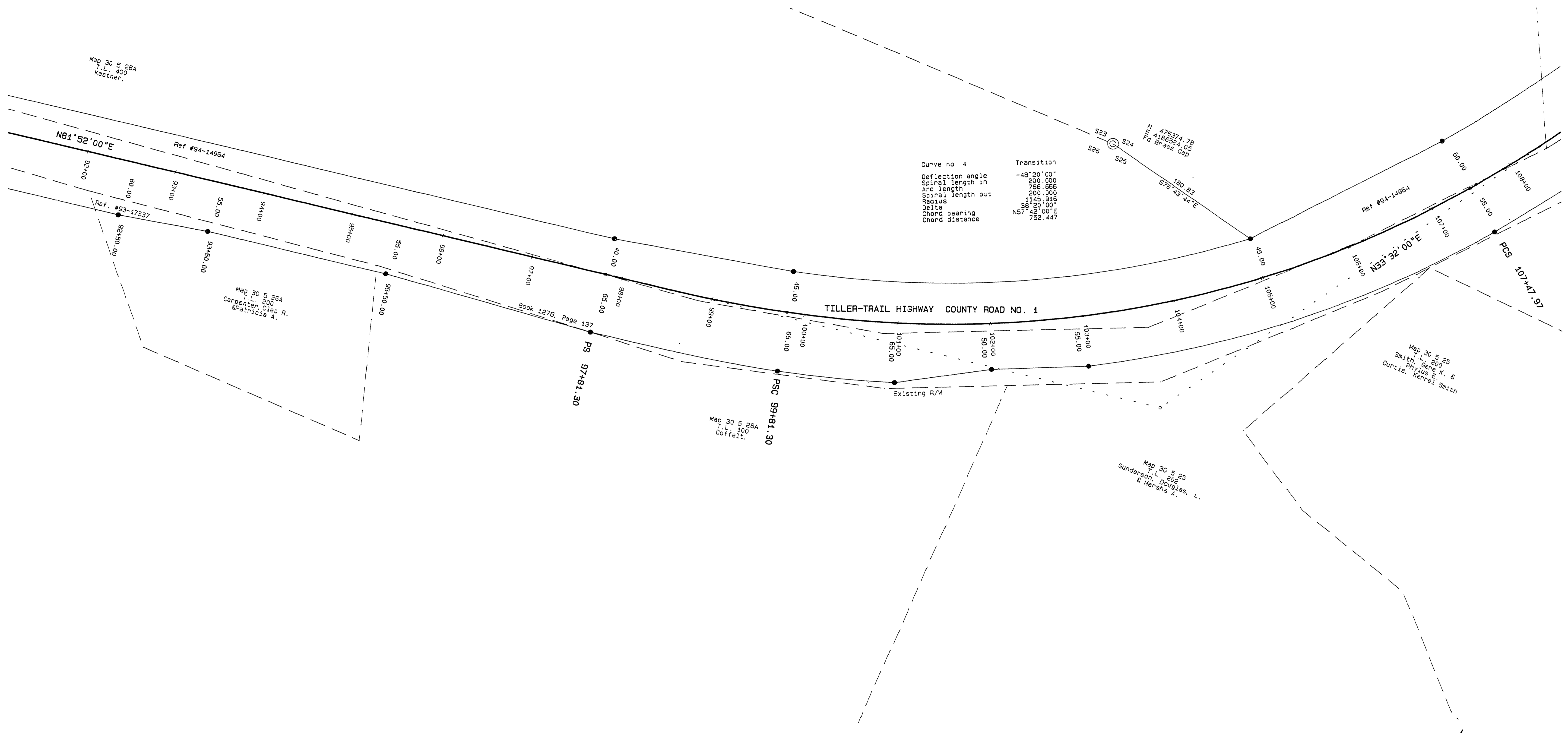


Right-of-Way Survey of Douglas County Road No. 1  
 In NW & NE 1/4, Sec. 26, NW 1/4, Sec. 25,  
 SW, NW, & NE 1/4, Sec. 24, T. 30 S., R. 5 W. W.M.  
 for Douglas County Department of Public Works  
 30 NOV 1994

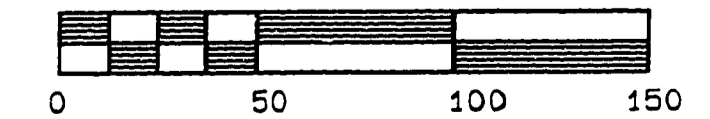
FILED  
 Date: 1-19-95 By: JC  
 This survey consists of:  
 Map: 22-52 #19 Sheets  
 Narrative:  
 Corner Rpt:  
 DOUGLAS COUNTY  
 SURVEYOR



- LEGEND:
- Found monument as noted.
  - Set 5/8" x 30" Iron Rod with Yellow Plastic Cap marked "AA SURVEYING INC."
  - Calculated Point, No monumentation.

NOTE: Coordinates are a local coordinate system based on Federal Highway Administration control survey. Bearings are based on this coordinate system. Record information is available from:  
 U.S. Department of Transportation  
 Federal Highway Administration  
 Western Federal Lands Highway Division  
 510 E Fifth Street  
 Vancouver, WA 98661

REGISTERED  
 PROFESSIONAL  
 LAND SURVEYOR  
 RONALD A. QUINBY  
 1954  
 EXP 12/31/94



CO. RD. # 1  
 DO NOT REMOVE FROM OFFICE  
 M.P. 4.98 - 5.28

CO. RD. # 1

04980528

1495-94