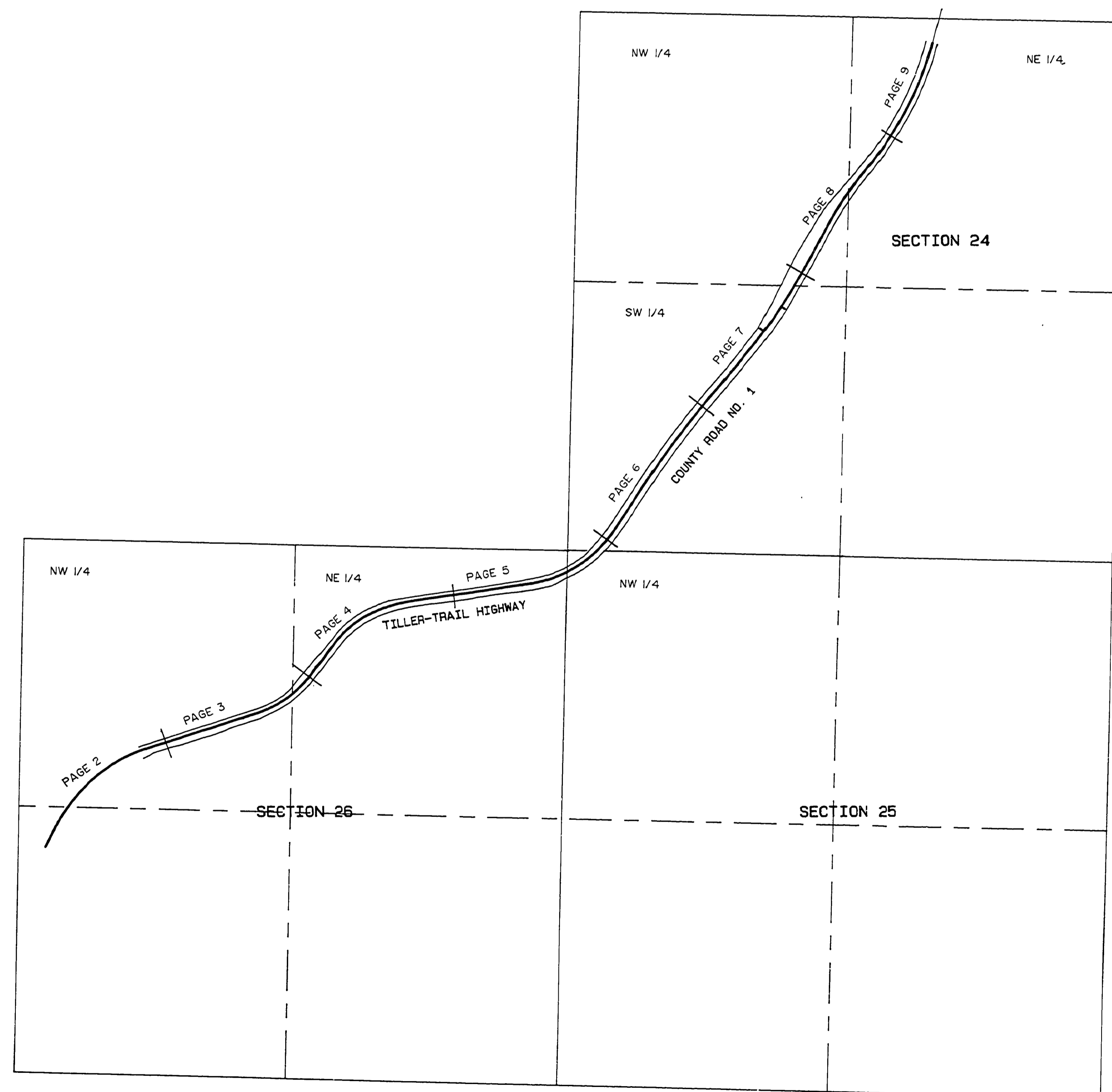


FILED
 Date: 1-19-95 By: DC
 This survey consists of:
 Map: CO. RD. # 1, 9 sheets
 Narrative: _____
 Corner: _____

DOUGLAS COUNTY
 SURVEYOR

RIGHT-OF-WAY SURVEY
 TILLER-TRAIL HIGHWAY,
 COUNTY ROAD NO. 1
 IN THE NW 1/4 & NE 1/4, SECTION 26,
 THE NW 1/4, SECTION 25 AND THE SW 1/4,
 THE NW 1/4 & THE NE 1/4, SECTION 24
 TOWNSHIP 30 SOUTH, RANGE 5 WEST, WILLAMETTE MERIDIAN
 FOR DOUGLAS COUNTY PUBLIC WORKS DEPARTMENT
 OCTOBER, 1994

TOWNSHIP 30 SOUTH, RANGE 5 WEST



VICINITY MAP
 NOT TO SCALE

NARRATIVE

The purpose of this survey was to monument the Right-of-Way of Tiller-Trail Highway, County Road No. 1 and to reference existing monuments in danger of being destroyed by construction.

The survey was based on a control survey performed by the Federal Highway Administration and provided by Douglas County Public Works Department. Existing monuments were located and tied to this coordinate system. The right-of-way was established and monuments set in accordance with the construction plans titled:

"PLANS FOR RECONSTRUCTION OF
 TILLER-TRAIL HIGHWAY
 COUNTY ROAD NO. 1 M.P. 4.3 TO M.P. 5.9
 and
 M.P. 5.9 TO M.P. 6.5
 1994"

All monuments shown as set have a reference post and identification paddle set close by.

COORDINATES SHOWN ARE OCS 83 (SOUTH ZONE)

REGISTERED
 PROFESSIONAL
 LAND SURVEYOR

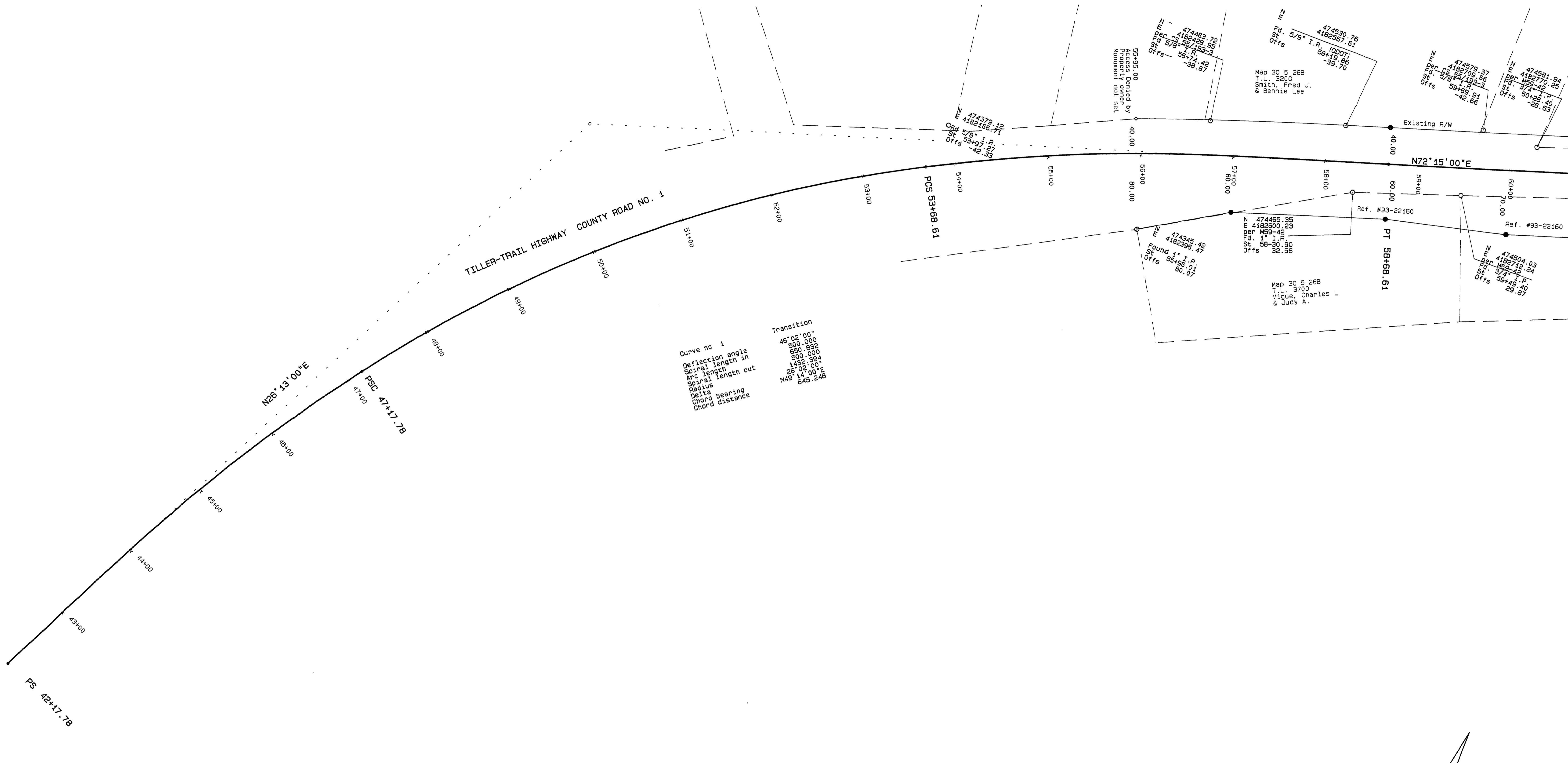
Ronald A. Guimby
 OREGON
 JULY 14, 1978
 RONALD A. GUIMBY
 1654
 EXP. 12/31/94

COUNTY SURVEYORS FILE DATA
 DO NOT REMOVE FROM OFFICE

0404064C

Right-of-Way Survey of Douglas County Road No. 1
 In NW & NE 1/4, Sec. 26, NW 1/4, Sec. 25,
 SW, NW, & NE 1/4, Sec. 24, T. 30 S., R. 5 W. W.M.
 for Douglas County Department of Public Works
 30 NOV 1994

FILED
 Date: 1-19-95 By: JC
 This survey consists of:
 Map: C.O. & D.# L. 9 Sheets
 Narrative: _____
 Corner R/W: _____
 DOUGLAS COUNTY
 SURVEYOR

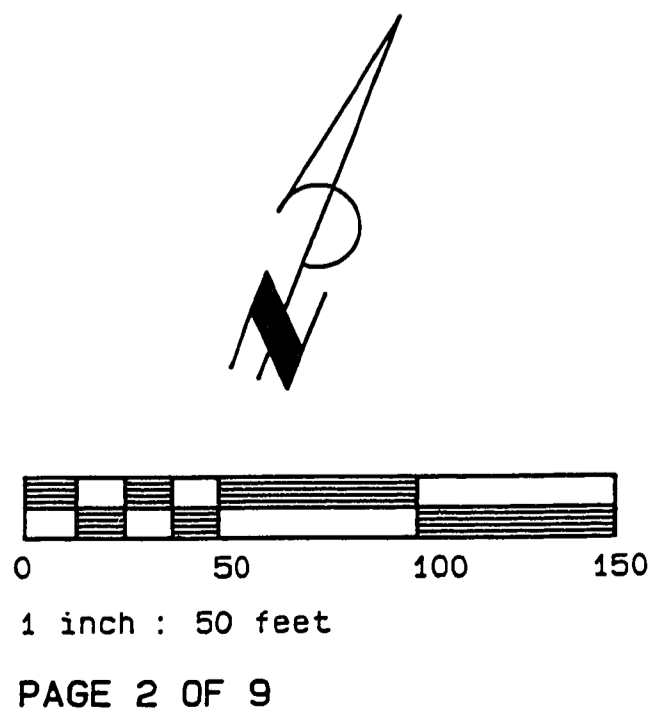


- LEGEND:
- Found monument as noted.
 - Set 5/8" x 30" Iron Rod with Yellow Plastic Cap marked "AA SURVEYING INC."
 - Calculated Point, No monumentation.

NOTE: Coordinates are a local coordinate system based on Federal Highway Administration control survey. Bearings are based on this coordinate system. Record information is available from:
 U.S. Department of Transportation
 Federal Highway Administration
 Western Federal Lands Highway Division
 510 E Fifth Street
 Vancouver, WA 98661

COUNTY SURVEYOR'S FILE DATA
 DO NOT REMOVE FROM OFFICE

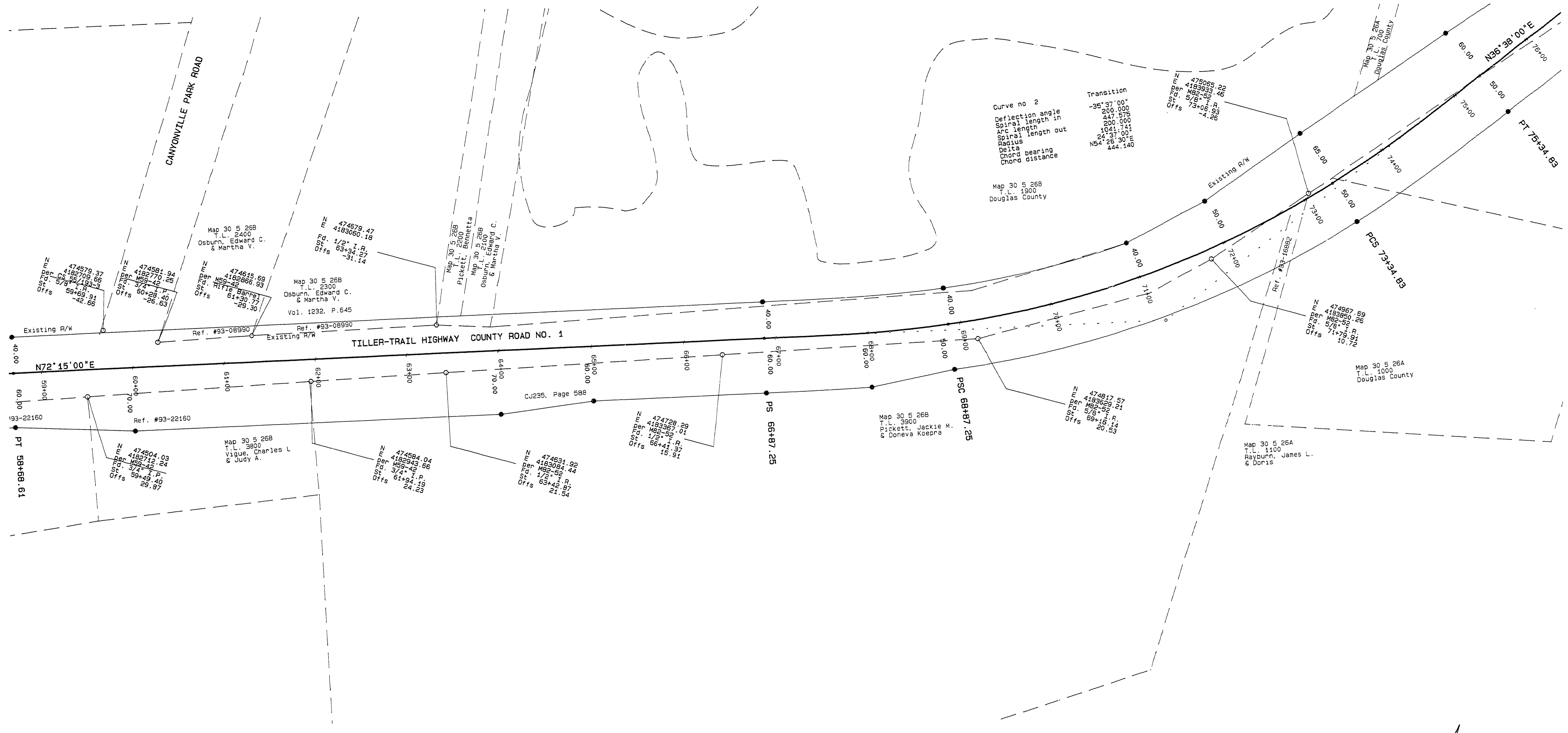
REGISTERED
 PROFESSIONAL
 LAND SURVEYOR
 RONALD A. GIMBY
 JULY 14, 1978
 1854
 EXP 12/31/94



04040435

Right-of-Way Survey of Douglas County Road No. 1
 In NW & NE 1/4, Sec. 26, NW 1/4, Sec. 25,
 SW, NW, & NE 1/4, Sec. 24, T. 30 S., R. 5 W. W.M.
 for Douglas County Department of Public Works
 30 NOV 1994

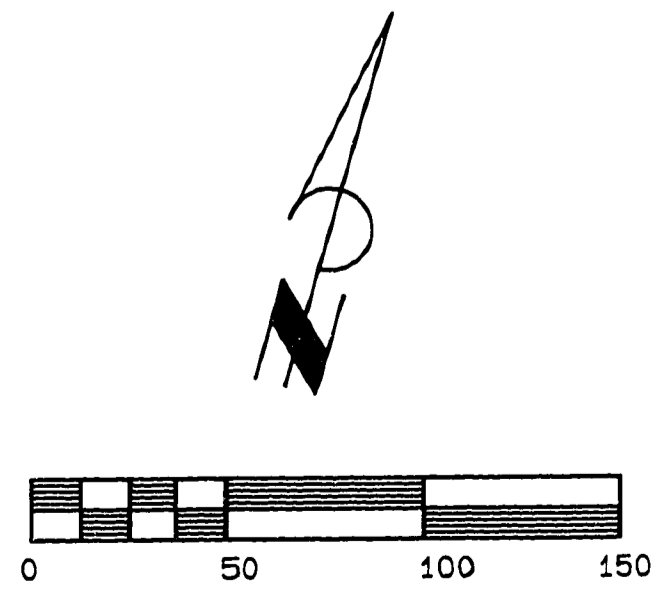
FILED
 Date: 1-19-95 By: JC
 This survey consists of:
 Map: CO. RD. # 1, 9 sheets
 Narrative:
 Corner Rpt:
 DOUGLAS COUNTY
 SURVEYOR



- LEGEND:
- Found monument as noted.
 - Set 5/8" x 30" Iron Rod with Yellow Plastic Cap marked "AA SURVEYING INC."
 - Calculated Point. No monumentation.

NOTE: Coordinates are a local coordinate system based on Federal Highway Administration control survey. Bearings are based on this coordinate system. Record information is available from:
 U.S. Department of Transportation
 Federal Highway Administration
 Western Federal Lands Highway Division
 610 E Fifth Street
 Vancouver, WA 98661

REGISTERED
 PROFESSIONAL
 LAND SURVEYOR
 RONALD A. GUMBY
 1554
 EXP. 12/31/94



COUNTY SURVEYORS FILE DATA
 DO NOT REMOVE FROM OFFICE

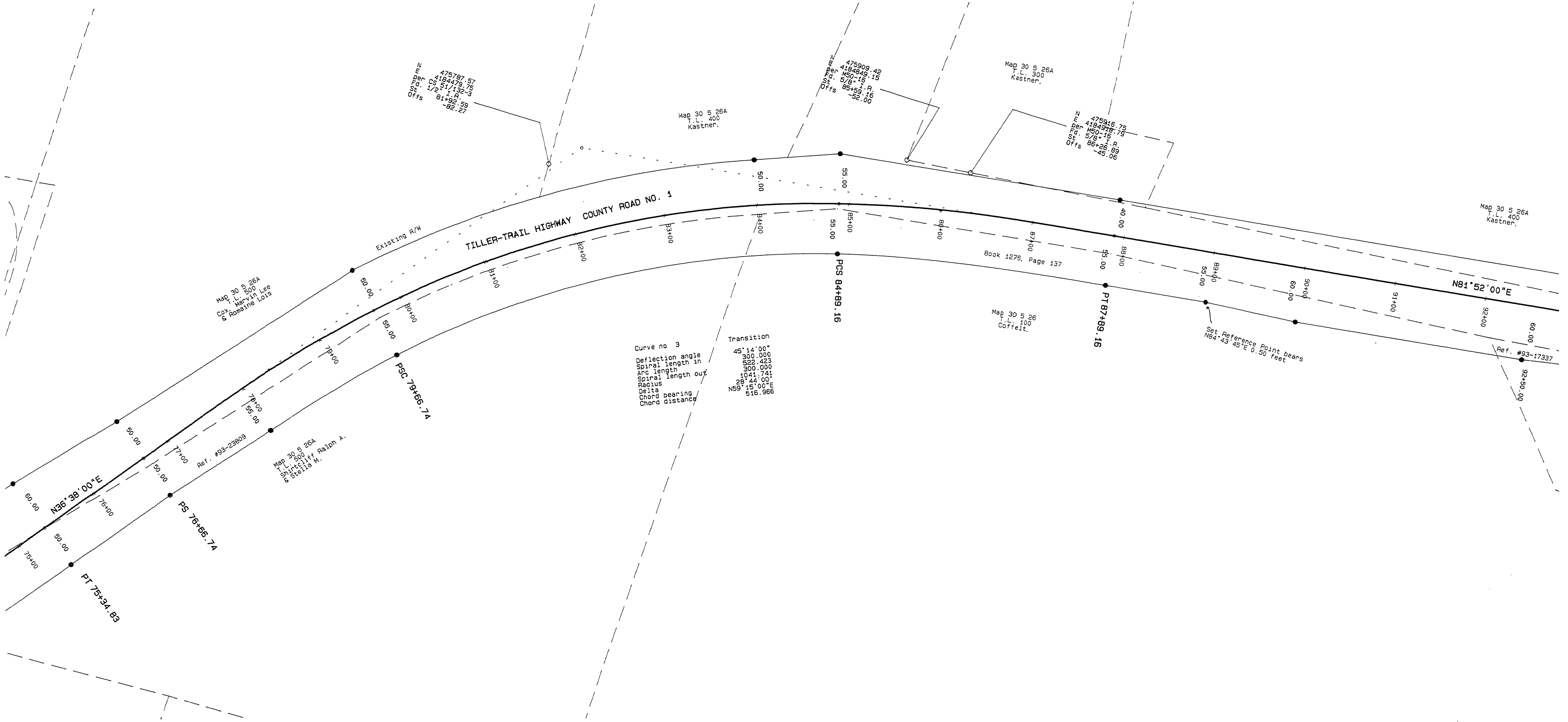
04350466

1406-24

Right-of-Way Survey of Douglas County Road No. 1
 In NW & NE 1/4, Sec. 26, NW 1/4, Sec. 25,
 SW, NW, & NE 1/4, Sec. 24, T. 30 S., R. 5 W. W.M.
 for Douglas County Department of Public Works
 30 NOV 1994

FILED
 Date: 1-19-95 By: JC
 This survey consists of:
 Map: CO. RD. # 1, 9 Sheets
 Narrative: _____
 Corner Rpt: _____

DOUGLAS COUNTY
 SURVEYOR

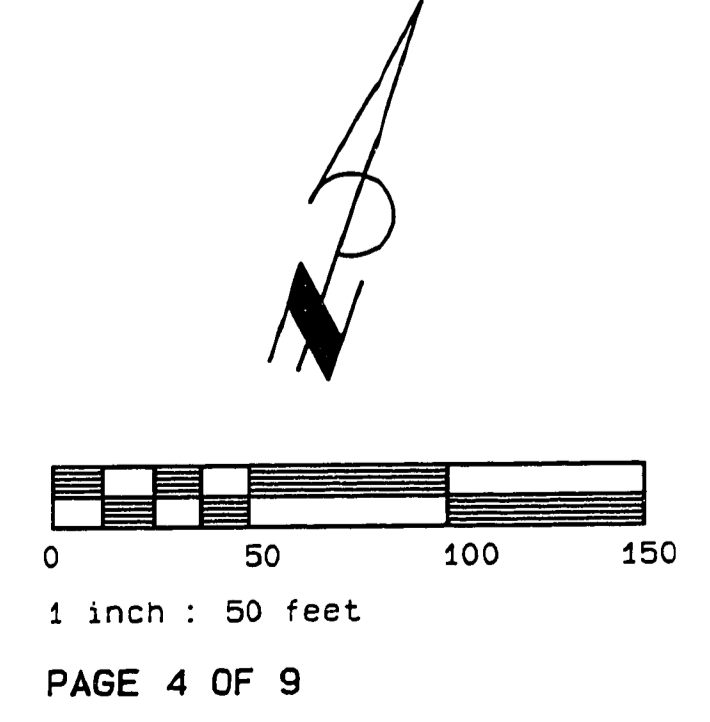


Transition
 Deflection angle 45°14'00"
 Spiral length in 300.000
 Arc length 300.000
 Spiral length out 300.000
 Radius 1041.741
 Delta 28°24'00"
 Chord bearing N59°15'00"E
 Chord distance 516.966

- LEGEND:
- Found monument as noted.
 - Set 5/8" x 30" Iron Rod with Yellow Plastic Cap marked "AA SURVEYING INC."
 - Calculated Point, No monumentation.

NOTE: Coordinates are a local coordinate system based on Federal Highway Administration control survey. Bearings are based on this Coordinate system. Record information is available from:
 U.S. Department of Transportation
 Federal Highway Administration
 Western Federal Lands Highway Division
 610 E Fifth Street
 Vancouver, WA 98661

REGISTERED
 PROFESSIONAL
 LAND SURVEYOR
 RONALD A. GUIMBY
 1954
 EXP 12/31/94



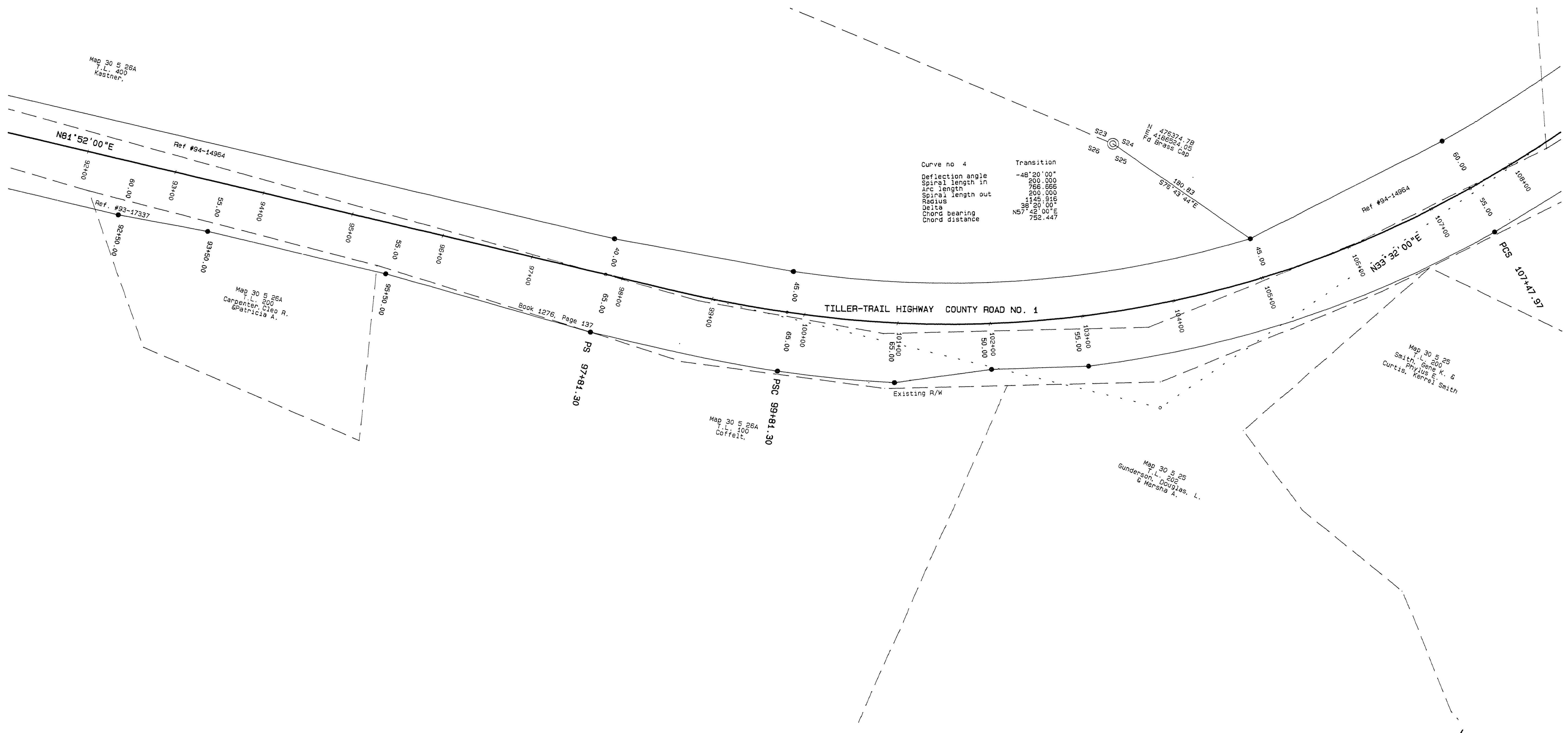
COUNTY SURVEYORS FILE DATA
 DO NOT REMOVE FROM OFFICE
 M.P. 4.66 - 4.98

CO. RD. # - 1

04660498

Right-of-Way Survey of Douglas County Road No. 1
 In NW & NE 1/4, Sec. 26, NW 1/4, Sec. 25,
 SW, NW, & NE 1/4, Sec. 24, T. 30 S., R. 5 W. W.M.
 for Douglas County Department of Public Works
 30 NOV 1994

FILED
 Date: 1-19-95 By: JC
 This survey consists of:
 Map: 22-62 #19 Sheets
 Narrative:
 Corner Rpt:
 DOUGLAS COUNTY
 SURVEYOR

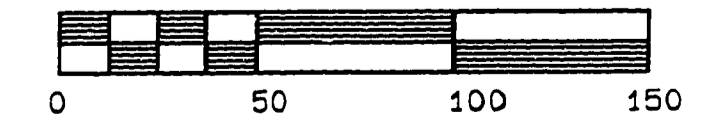


Curve no 4	
Deflection angle	-48°20'00"
Spiral length in	200.000
Arc length	766.866
Spiral length out	200.000
Radius	1146.216
Delta	96°20'00"
Chord bearing	N57°42'00"E
Chord distance	752.447

- LEGEND:
- Found monument as noted.
 - Set 5/8" x 30" Iron Rod with Yellow Plastic Cap marked "AA SURVEYING INC."
 - Calculated Point, No monumentation.

NOTE: Coordinates are a local coordinate system based on Federal Highway Administration control survey. Bearings are based on this coordinate system. Record information is available from:
 U.S. Department of Transportation
 Federal Highway Administration
 Western Federal Lands Highway Division
 510 E Fifth Street
 Vancouver, WA 98661

REGISTERED
 PROFESSIONAL
 LAND SURVEYOR
 RONALD A. QUINBY
 1954
 EXP 12/31/94



1 inch = 50 feet
 PAGE 5 OF 9

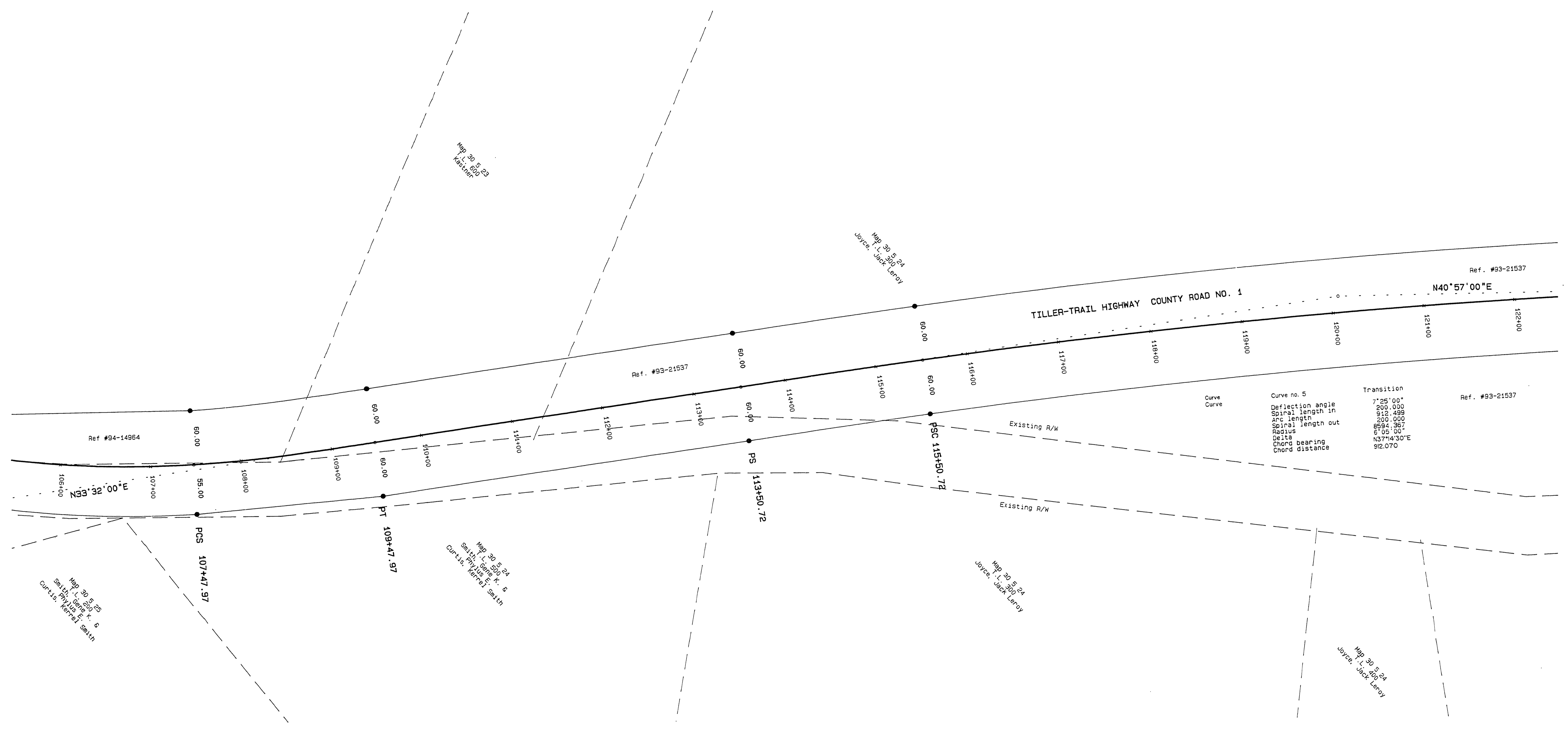
DO NOT REMOVE FROM OFFICE
 M.P. 4.98 - 5.28

CO. RD. # 1

04980528

Right-of-Way Survey of Douglas County Road No. 1
 In NW & NE 1/4, Sec. 26, NW 1/4, Sec. 25,
 SW, NW, & NE 1/4, Sec. 24, T. 30 S., R. 5 W. W.M.
 for Douglas County Department of Public Works
 30 NOV 1994

FILED
 Date: 1-19-95 By: JC
 This survey consists of:
 Map: CO. RD. #1 962-1
 Narrative:
 Corner Rpt:
 DOUGLAS COUNTY
 SURVEYOR

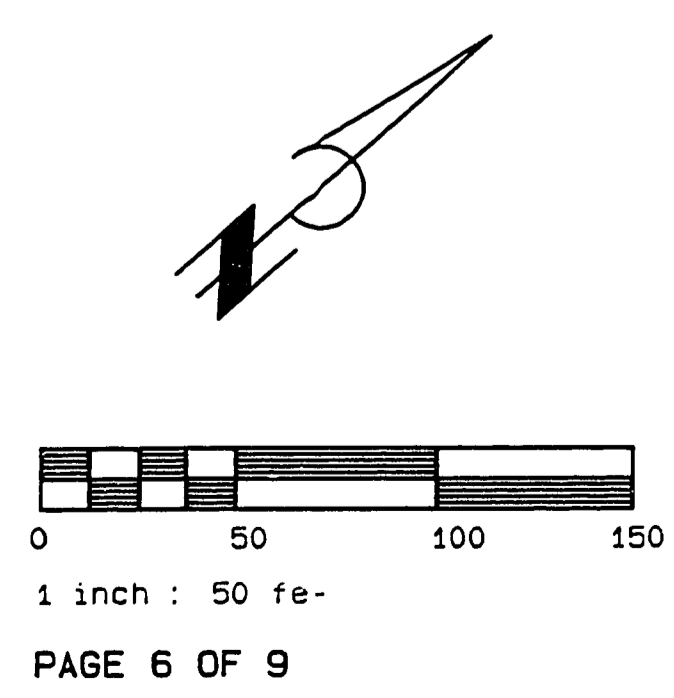


Curve	Transition
Curve no. 5	7°25'00"
Deflection angle	200.000
Spiral length in	312.499
Arc length	200.000
Spiral length out	894.367
Radius	6°05'00"
Delta	N37°14'30"E
Chord bearing	912.070
Chord distance	

- LEGEND:
- Found monument as noted.
 - Set 5/8" x 30" Iron Rod with Yellow Plastic Cap marked "AA SURVEYING INC"
 - Calculated Point. No monumentation.

NOTE: Coordinates are a local coordinate system based on Federal Highway Administration control survey. Bearings are based on this Coordinate system. Record information is available from:
 U.S. Department of Transportation
 Federal Highway Administration
 Western Federal Lands Highway Division
 610 E Fifth Street
 Vancouver, WA 98661

REGISTERED
 PROFESSIONAL
 LAND SURVEYOR
 RONALD A. GUMBY
 JULY 14, 1978
 1654
 EXP 12/31/94



COUNTY SURVEYORS FILE DATA
 DO NOT REMOVE FROM OFFICE

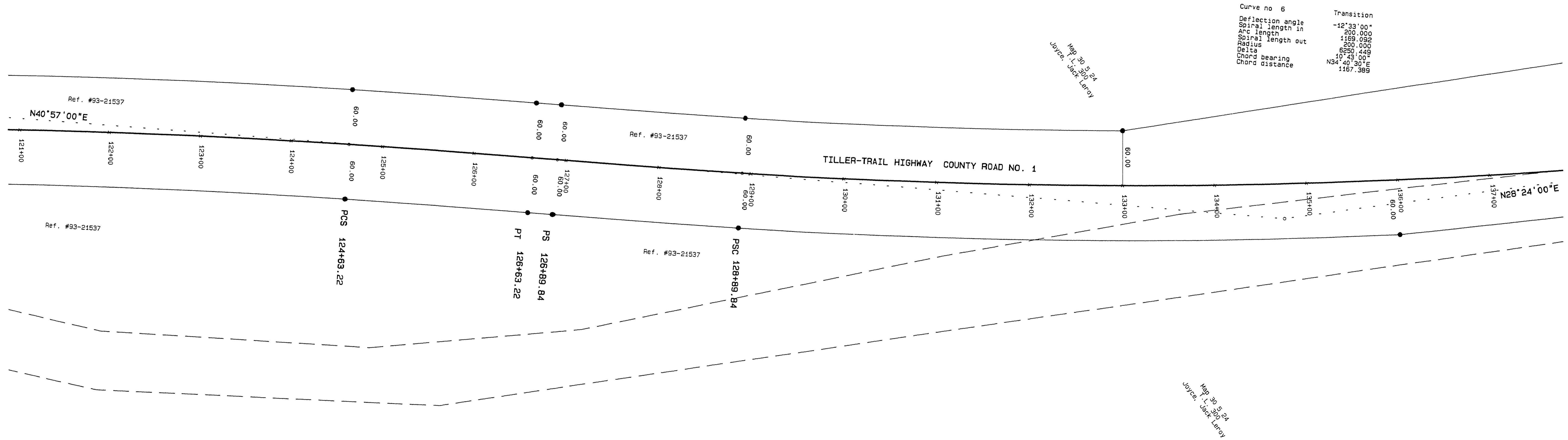
05280558

1496-94

Right-of-Way Survey of Douglas County Road No. 1
 In NW & NE 1/4, Sec. 26, NW 1/4, Sec. 25,
 SW, NW, & NE 1/4, Sec. 24, T. 30 S., R. 5 W. W.M.
 for Douglas County Department of Public Works
 30 NOV 1994

FILED
 Date: 1-19-95 By: JC
 This survey consists of:
 Map: CO. RD. # 1 & 2
 Narrative:
 Corner Rpt:
 DOUGLAS COUNTY
 SURVEYOR

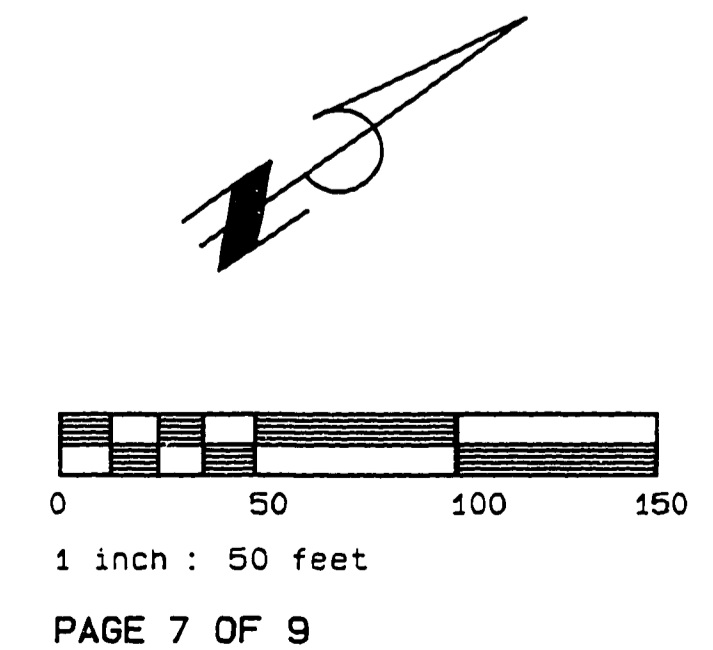
Curve no 6	Transition
Deflection angle	-12°33'00"
Spiral length in	200.000
Arc length	4169.032
Spiral length out	200.000
Radius	6250.449
Delta	10°45'00"
Chord bearing	N34°40'30"E
Chord distance	1167.389



- LEGEND:
- Found monument as noted.
 - Set 5/8" x 30" Iron Rod with Yellow Plastic Cap marked "AA SURVEYING INC."
 - Calculated Point, No monumentation.

NOTE: Coordinates are a local coordinate system based on Federal Highway Administration control survey. Bearings are based on this Coordinate system. Record information is available from:
 U.S. Department of Transportation
 Federal Highway Administration
 Western Federal Lands Highway Division
 610 E. Fifth Street
 Vancouver, WA 98661

REGISTERED
 PROFESSIONAL
 LAND SURVEYOR
 RONALD A. QUIMBY
 1954
 EXP 12/31/94



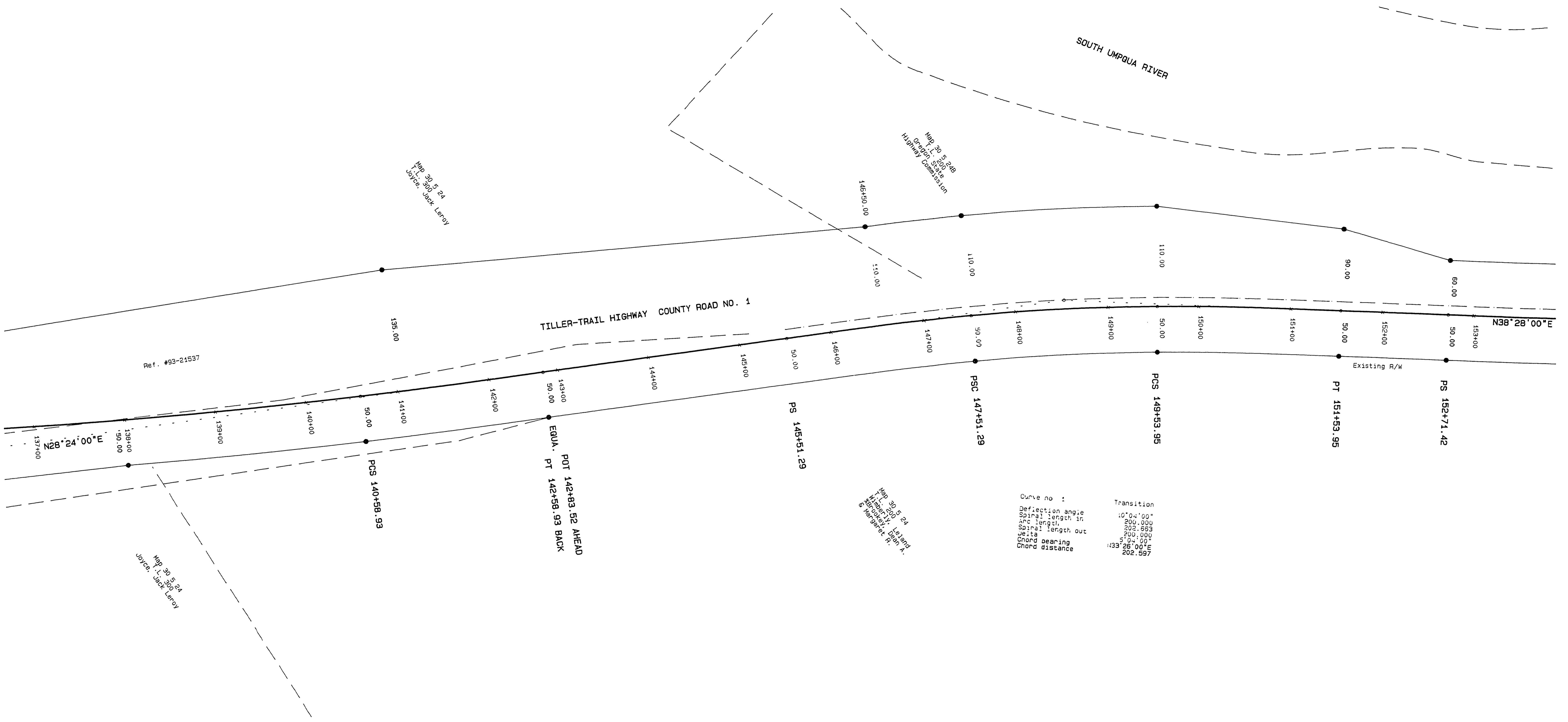
COUNTY SURVEYORS FILE DATA
 DO NOT REMOVE FROM OFFICE
 M.P. 5.58-5.86

CO. RD. # 1

05580586

Right-of-Way Survey of Douglas County Road No. 1
 In NW & NE 1/4, Sec. 26, NW 1/4, Sec. 25,
 SW, NW, & NE 1/4, Sec. 24, T. 30 S., R. 5 W. W.M.
 for Douglas County Department of Public Works
 30 NOV 1994

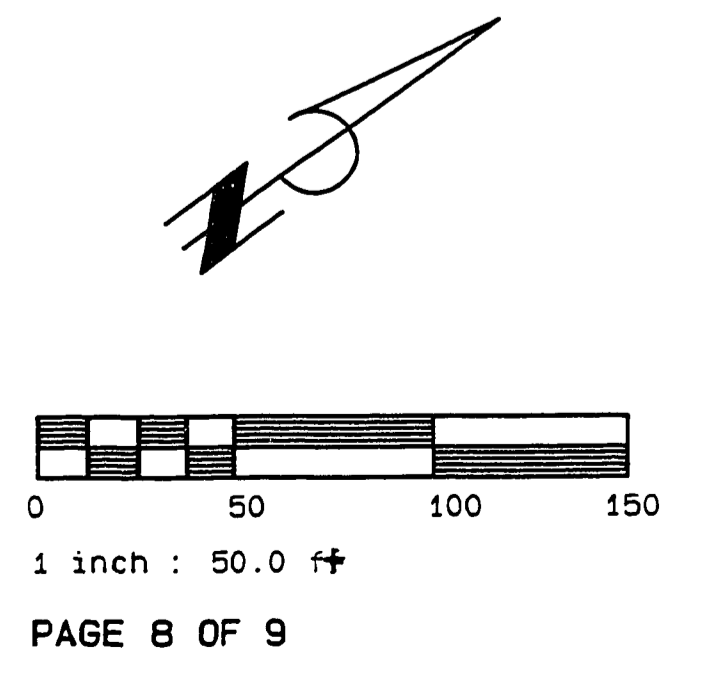
FILED
 Date: 1-19-95 By: J.C.
 This survey consists of:
 Map: CO. RD. # 1 9 sheets
 Narrative:
 Corner Rpt:
 DOUGLAS COUNTY
 SURVEYOR



- LEGEND:
- Found monument as noted.
 - Set 5/8" x 30" Iron Rod with Yellow Plastic Cap marked "AA SURVEYING INC."
 - Calculated Point. No monumentation.

NOTE: Coordinates are a local coordinate system based on Federal Highway Administration control survey. Bearings are based on this Coordinate system. Record information is available from:
 U.S. Department of Transportation
 Federal Highway Administration
 Western Federal Lands Highway Division
 530 E Fifth Street
 Vancouver, WA 98661

REGISTERED
 PROFESSIONAL
 LAND SURVEYOR
 RONALD A. QUIMBY
 JULY 14, 1978
 1984
 EXP 12/31/94

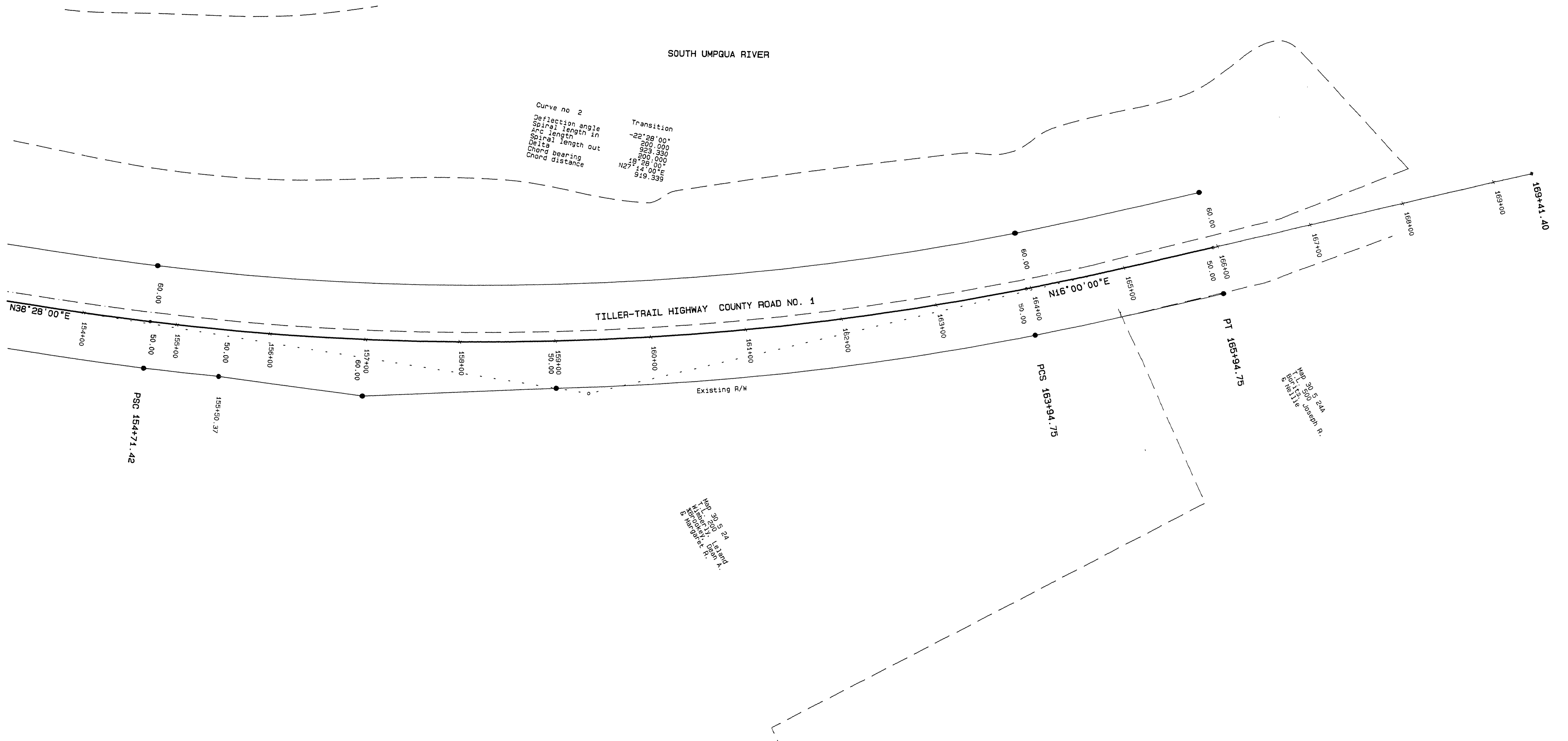


COUNTY SURVEYORS FILE DATA
 DO NOT REMOVE FROM OFFICE

05860618

Right-of-Way Survey of Douglas County Road No. 1
 In NW & NE 1/4, Sec. 26, NW 1/4, Sec. 25,
 SW, NW, & NE 1/4, Sec. 24, T. 30 S., R. 5 W. W.M.
 for Douglas County Department of Public Works
 30 NOV 1994

FILED
 Date: 1-19-95 By: JC
 This survey consists of:
 Map: 00 RD #1 9 sheets
 Narrative: _____
 Corner Rpt: _____
 DOUGLAS COUNTY
 SURVEYOR



Curve no 2

Deflection angle	-22°28'00"
Spiral length in	200.000
ARC length	200.000
Spiral length out	200.000
Delta	19°28'00"
Chord bearing	N27°14'00"E
Chord distance	919.339

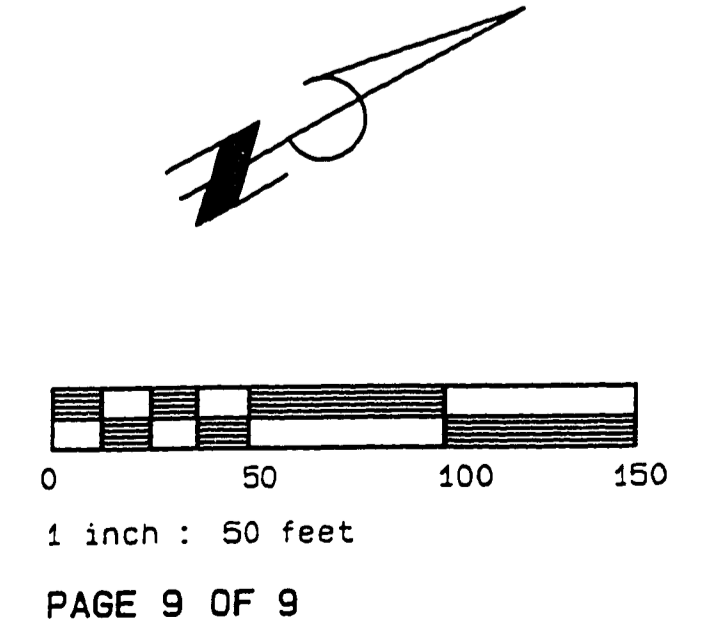
Map 30 5 24A
 Tiller-Trail Highway
 & Merger Sect. 24

Map 30 5 24A
 Tiller-Trail Highway
 & Merger Sect. 24

- LEGEND:
- Found monument as noted.
 - Set 5/8" x 30" Iron Rod with Yellow Plastic Cap marked "AA SURVEYING INC."
 - Calculated Point, No monumentation.

NOTE: Coordinates are a local coordinate system based on Federal Highway Administration control survey. Bearings are based on this Coordinate system. Record information is available from:
 U.S. Department of Transportation
 Federal Highway Administration
 Western Federal Lands Highway Division
 610 E Fifth Street
 Vancouver, WA 98661

REGISTERED
 PROFESSIONAL
 LAND SURVEYOR
 RONALD A. GIMBY
 1954
 EXP 12/31/94



COUNTY SURVEYORS FILE DATA
 DO NOT REMOVE FROM OFFICE

06180647

(31)