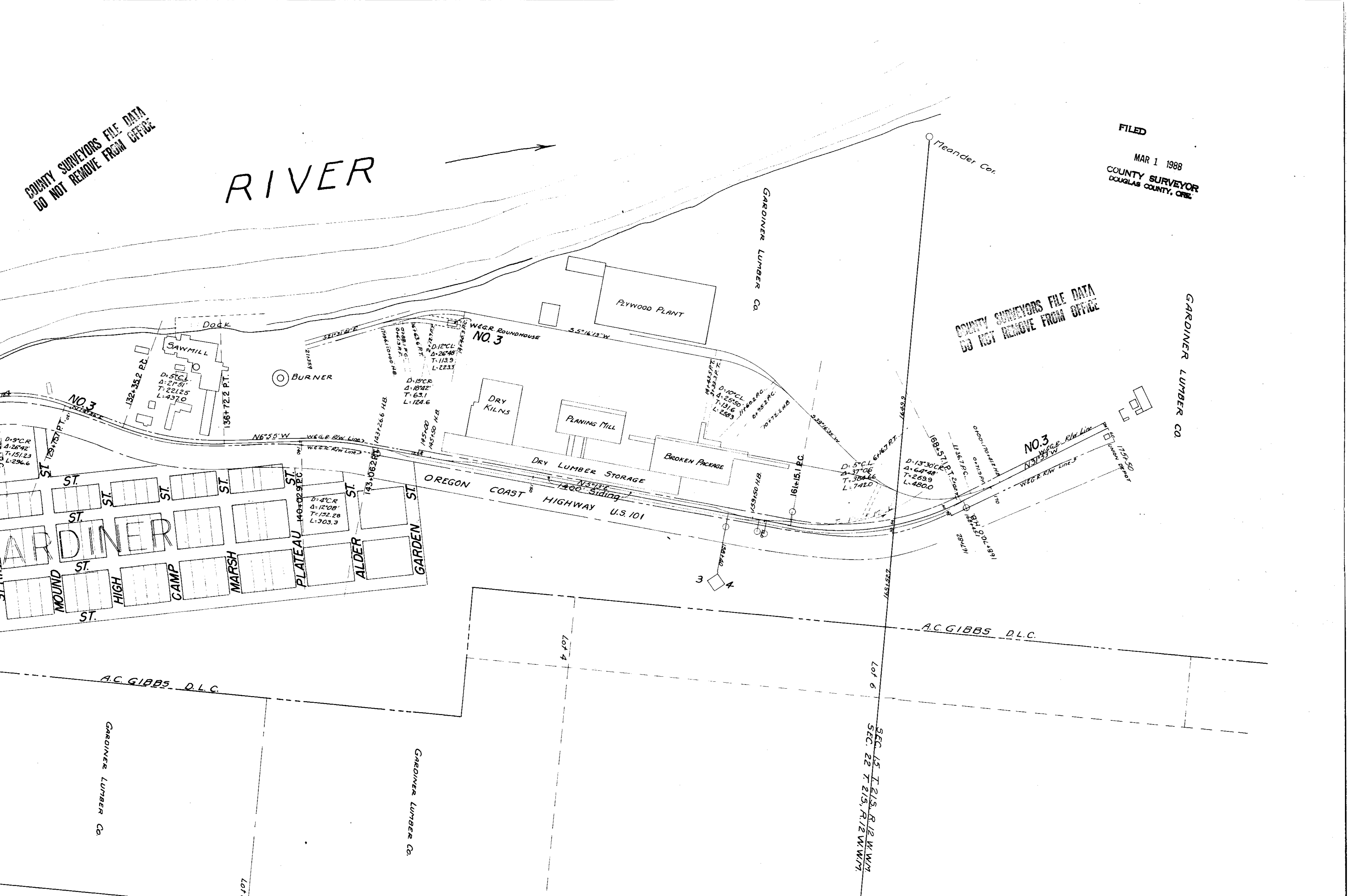


COUNTY SURVEYORS FILE DATA  
DO NOT REMOVE FROM OFFICE

RIVER

FILED  
MAR 1 1988  
COUNTY SURVEYOR  
DOUGLAS COUNTY, ORE.

COUNTY SURVEYORS FILE DATA  
DO NOT REMOVE FROM OFFICE



D=9°CR  
A=26°42'  
T=151.23  
L=296.6

D=5°CL  
A=21°57'  
T=221.25  
L=437.0

D=15°CR  
A=18°42'  
T=63.1  
L=124.6

D=12°CL  
A=26°48'  
T=113.9  
L=223.3

D=10°CL  
A=25°50'  
T=151.6  
L=283

D=5°CL  
A=37°06'  
T=384.66  
L=742.0

D=13°30'CR  
A=64°48'  
T=269.9  
L=480.0

D=4°CR  
A=12°08'  
T=132.28  
L=303.3

SEC. 15 T. 21 S. R. 12 W. W. 1/4  
SEC. 22 T. 21 S. R. 12 W. W. 1/4

GARDINER LUMBER CO.

GARDINER LUMBER CO.

GARDINER LUMBER CO.

A.C. GIBBS D.L.C.

A.C. GIBBS D.L.C.

LOT

Lot 4

Lot 6

3 4

Meander Cor.

GARDINER LUMBER CO.

PLYWOOD PLANT

PLANING MILL

BROKEN PACKAGE

DRY LUMBER STORAGE

DRY KILNS

SAWMILL

Dock

BURNER

W&R Roundhouse NO. 3

NO. 3

NO. 3

GARDINER

MOUND ST.  
HIGH ST.  
CAMP ST.  
MARSH ST.

PLATEAU ST.  
ALDER ST.  
GARDEN ST.

OREGON COAST HIGHWAY U.S. 101

1400 Siding

139150 H.B.

16115.1 P.C.

16815.7 P.T.

1136.7 P.C.

0+215.0 P.A.

0+215.0 P.A.

1572.05 P.T.

132+35.2 P.D.

136+72.2 P.T.

N6°55'W

W&R R/W Line 2

W&R R/W Line 3

143+26.6 H.B.

143+06.2 P.T.

145+50 H.B.

145+50 H.B.

145+50 H.B.

145+50 H.B.

145+50 H.B.

145+50 H.B.

145+50 H.B.

145+50 H.B.

145+50 H.B.

145+50 H.B.

145+50 H.B.

145+50 H.B.

145+50 H.B.

145+50 H.B.

145+50 H.B.

145+50 H.B.

145+50 H.B.

145+50 H.B.

145+50 H.B.

145+50 H.B.

145+50 H.B.

145+50 H.B.

ST.

ST.

ST.

ST.

ST.

ST.

ST.

ST.

ST.

ST.

ST.

ST.

ST.

ST.

ST.

ST.

ST.

ST.

ST.

ST.

ST.

ST.

ST.

ST.

ST.

ST.

ST.

ST.

ST.

ST.

ST.

ST.

ST.

ST.

ST.

ST.

ST.

ST.

ST.

ST.

ST.

ST.

ST.

ST.

ST.

ST.

ST.

ST.

ST.

ST.

ST.

ST.

ST.

ST.

ST.

ST.

ST.

ST.

ST.

ST.

ST.

ST.

ST.

ST.

ST.

ST.

ST.

ST.

ST.

ST.

ST.

ST.

ST.

ST.

ST.

ST.

ST.

ST.

ST.

ST.

ST.

ST.

ST.

ST.

ST.

ST.

ST.

ST.

ST.

ST.

ST.

ST.

ST.

ST.

ST.

ST.

ST.

ST.

ST.

ST.

ST.

ST.

ST.

ST.

ST.

ST.

ST.

ST.

ST.

ST.

ST.

ST.

ST.

ST.

ST.

ST.

ST.

ST.

ST.

ST.

ST.

ST.

ST.

ST.

ST.

ST.

ST.

ST.

ST.

ST.

ST.

ST.

ST.

ST.

ST.

ST.

ST.

ST.

ST.

ST.

ST.

ST.

ST.

ST.

ST.

ST.

ST.

ST.

ST.

ST.

ST.

ST.

ST.

ST.

ST.

ST.

ST.

ST.

ST.

ST.

ST.

ST.

ST.

ST.

ST.

ST.

ST.

ST.

ST.

ST.

ST.

ST.

ST.

ST.

ST.

ST.

ST.

ST.

ST.

ST.

ST.

ST.

ST.

ST.

ST.

ST.

ST.

ST.

ST.

ST.

ST.

ST.

ST.

ST.

ST.

ST.

ST.

ST.

ST.

ST.

ST.

ST.

ST.

ST.

ST.

ST.

ST.

ST.

ST.

ST.

ST.

ST.

ST.

ST.

ST.

ST.

ST.

ST.

ST.

ST.

ST.

ST.

ST.

ST.

ST.

ST.

ST.

ST.

ST.

ST.

ST.

ST.

ST.

ST.

ST.

ST.

ST.

ST.

ST.

ST.

ST.

ST.

ST.

ST.

ST.

ST.

ST.

ST.

ST.

ST.

ST.

ST.

ST.

ST.

ST.

ST.

ST.

ST.

ST.

ST.

ST.

ST.