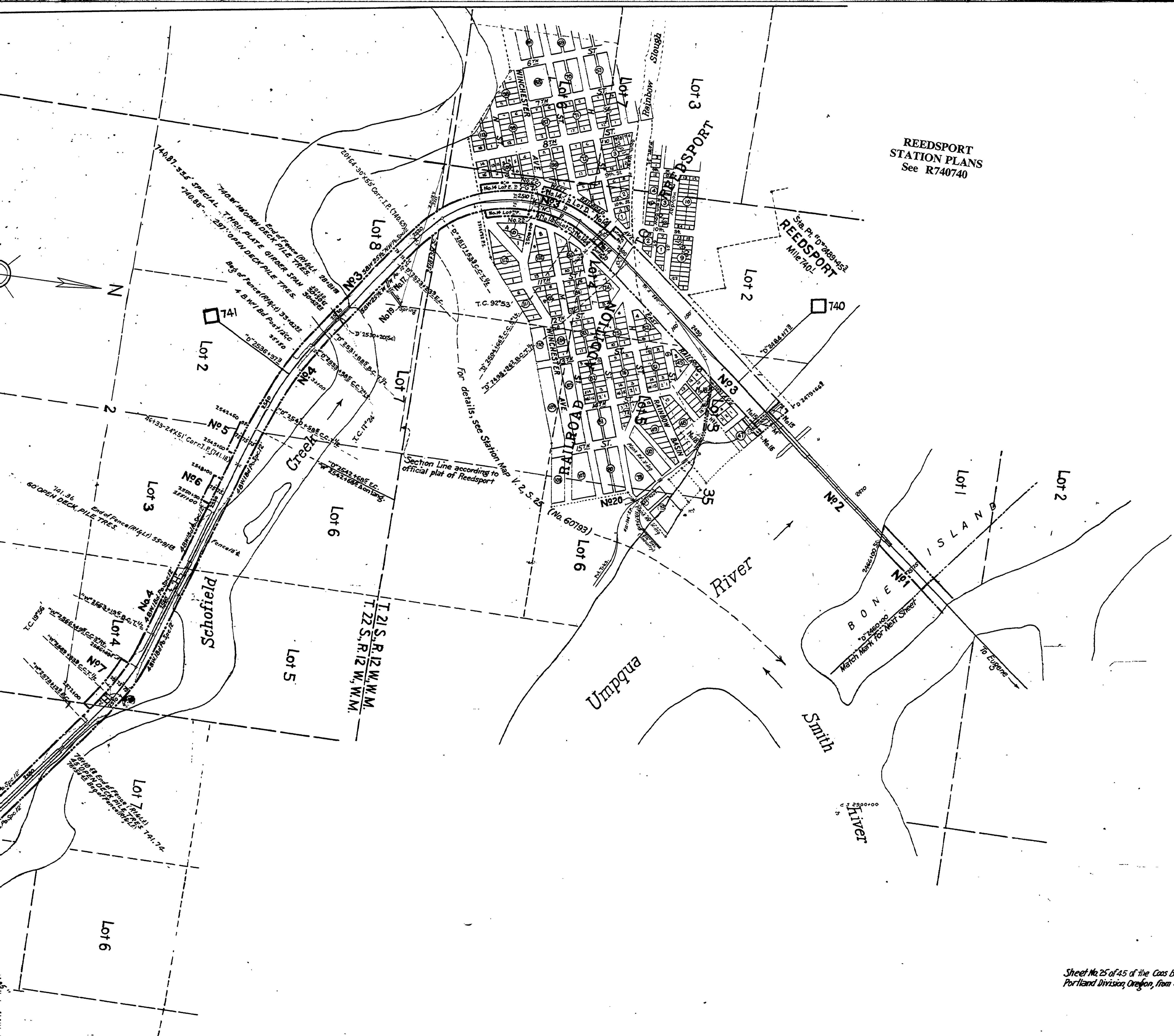


Detail of County Road No. 50  
Scale: 1" = 200'





REEDSPORT  
STATION PLANS  
See R740740

Sta. Pl. No. 7409, 7452  
REEDSPORT  
Mile 740.1

RIGHT OF WAY AND TRACK MAP  
COOS BAY BRANCH - EUGENE TO MYRTLE POINT  
SOUTHERN PACIFIC COMPANY  
OPERATED BY  
SOUTHERN PACIFIC COMPANY  
PORTLAND DIVISION, DOUGLAS COUNTY, OREGON

Sheet No. 25 of 45 of the Coos Bay Branch of the Southern Pacific Company's Railroad  
Portland Division, Oregon, from survey station D 2460+00 to survey station N 2670+00

FROM STATION D 2460+00 TO STATION N 2670+00  
Scale: 1 inch = 400 feet

VALUATION DEPARTMENT  
SAN FRANCISCO, CALIFORNIA

Valuation Officer

RV2S25