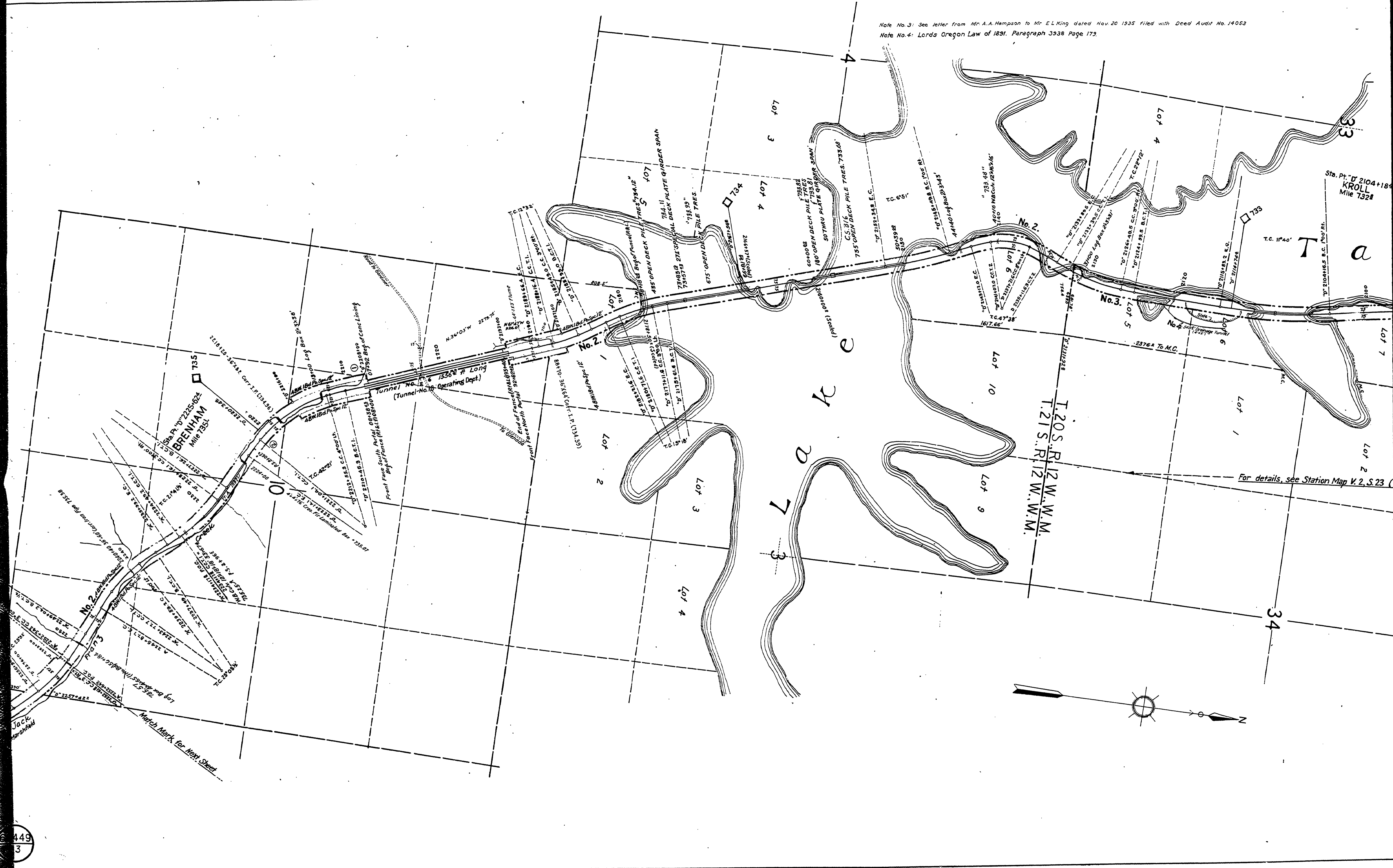


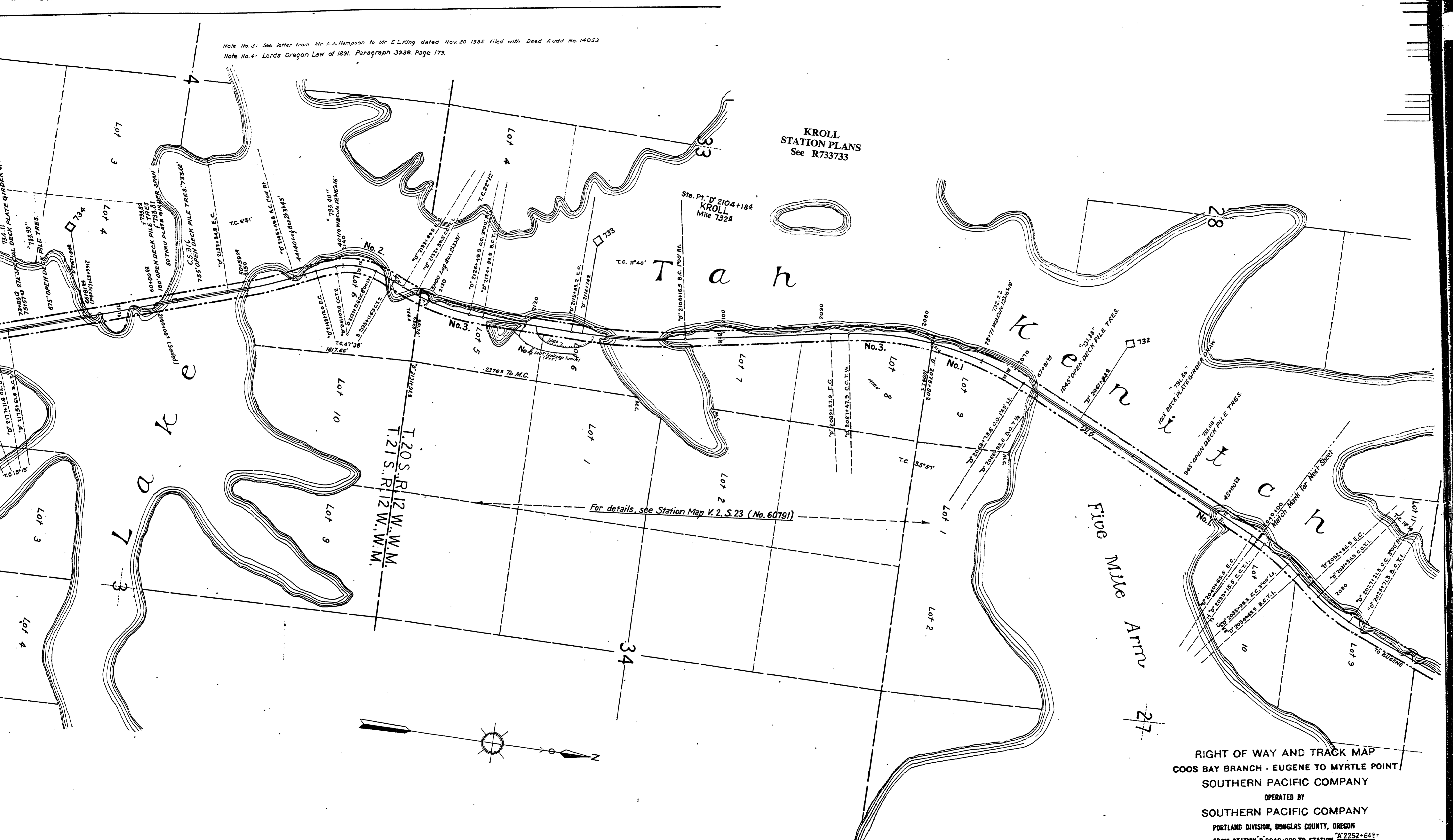
Note No. 3: See letter from Mr. A.A. Hampson to Mr. E.L. King dated Nov. 20 1935 filed with Deed Audit No. 14053
Note No. 4: Lords Oregon Law of 1891. Paragraph 3538 Page 179.



Sta. Pt. "D" 2104+18
KROLL
Mile 7328

For details, see Station Map V. 2, S. 23

Note No. 3: See letter from Mr. A.A. Hampson to Mr. E.L. King dated Nov. 20 1935 filed with Deed Audit No. 14053
 Note No. 4: Lords Oregon Law of 1891, Paragraph 3938, Page 179.



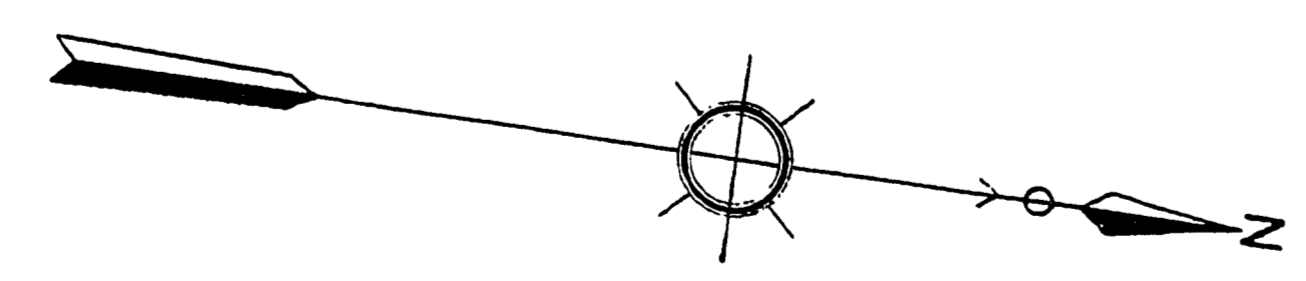
KROLL
 STATION PLANS
 See R733733

T a h
 K o c a h

Five
 Mile
 Arm

T. 20 S. R. 12 W. W.M.
 T. 21 S. R. 12 W. W.M.

For details, see Station Map V. 2, S. 23 (No. 60791)



RIGHT OF WAY AND TRACK MAP
 COOS BAY BRANCH - EUGENE TO MYRTLE POINT
 SOUTHERN PACIFIC COMPANY
 OPERATED BY
 SOUTHERN PACIFIC COMPANY
 PORTLAND DIVISION, DOUGLAS COUNTY, OREGON
 FROM STATION D' 2040+00 TO STATION K' 2252+64.3
 Scale: 1 inch = 400 feet
 D' 2252+61.8

Sheet No. 23 of 45 of the Coos Bay Branch of the Southern Pacific Company's Railroad
 Portland Division Oregon, from survey station D' 2040+00 to survey station K' 2252+64.3

Valuation Officer

VALUATION DEPARTMENT
 SAN FRANCISCO, CALIFORNIA