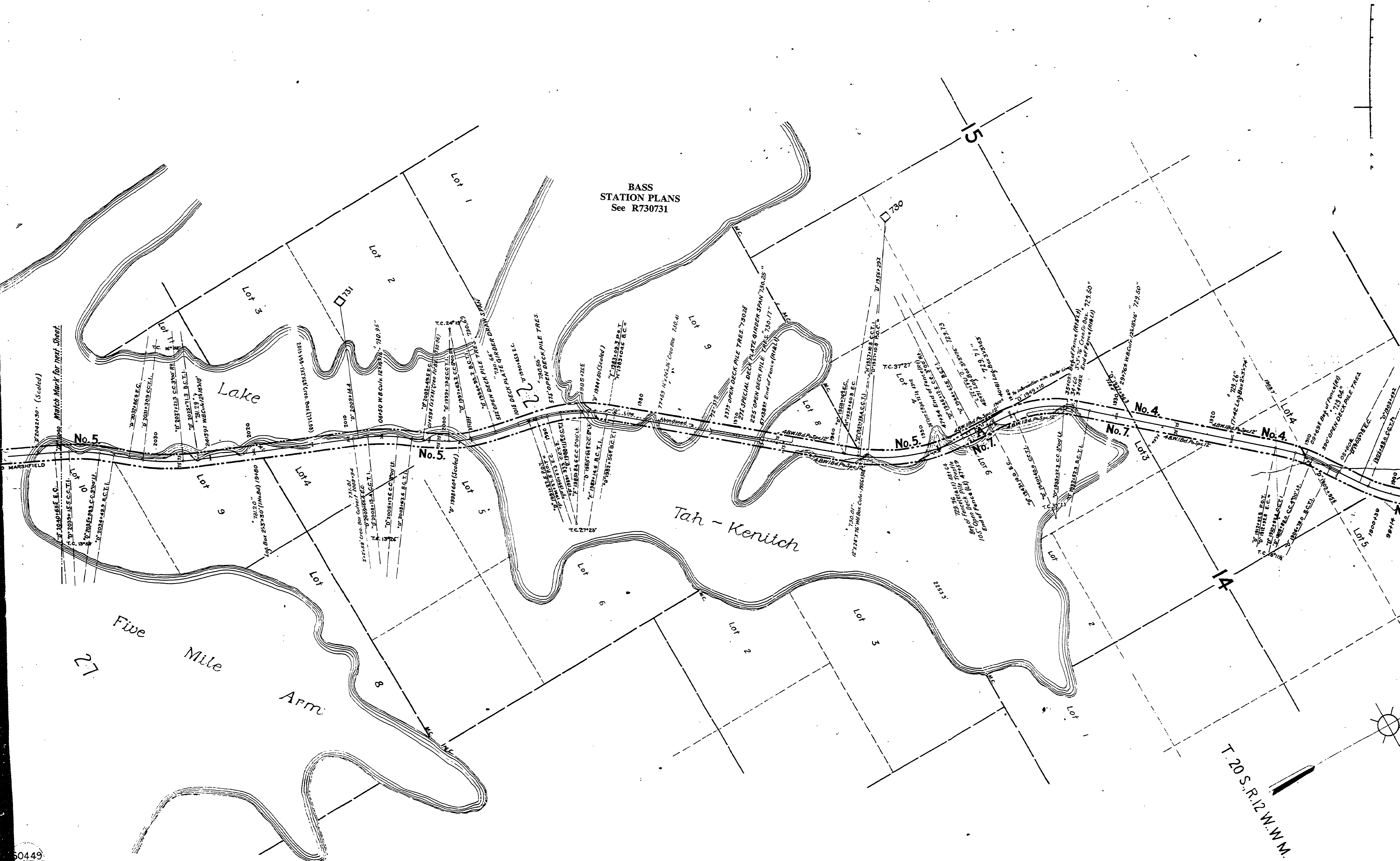
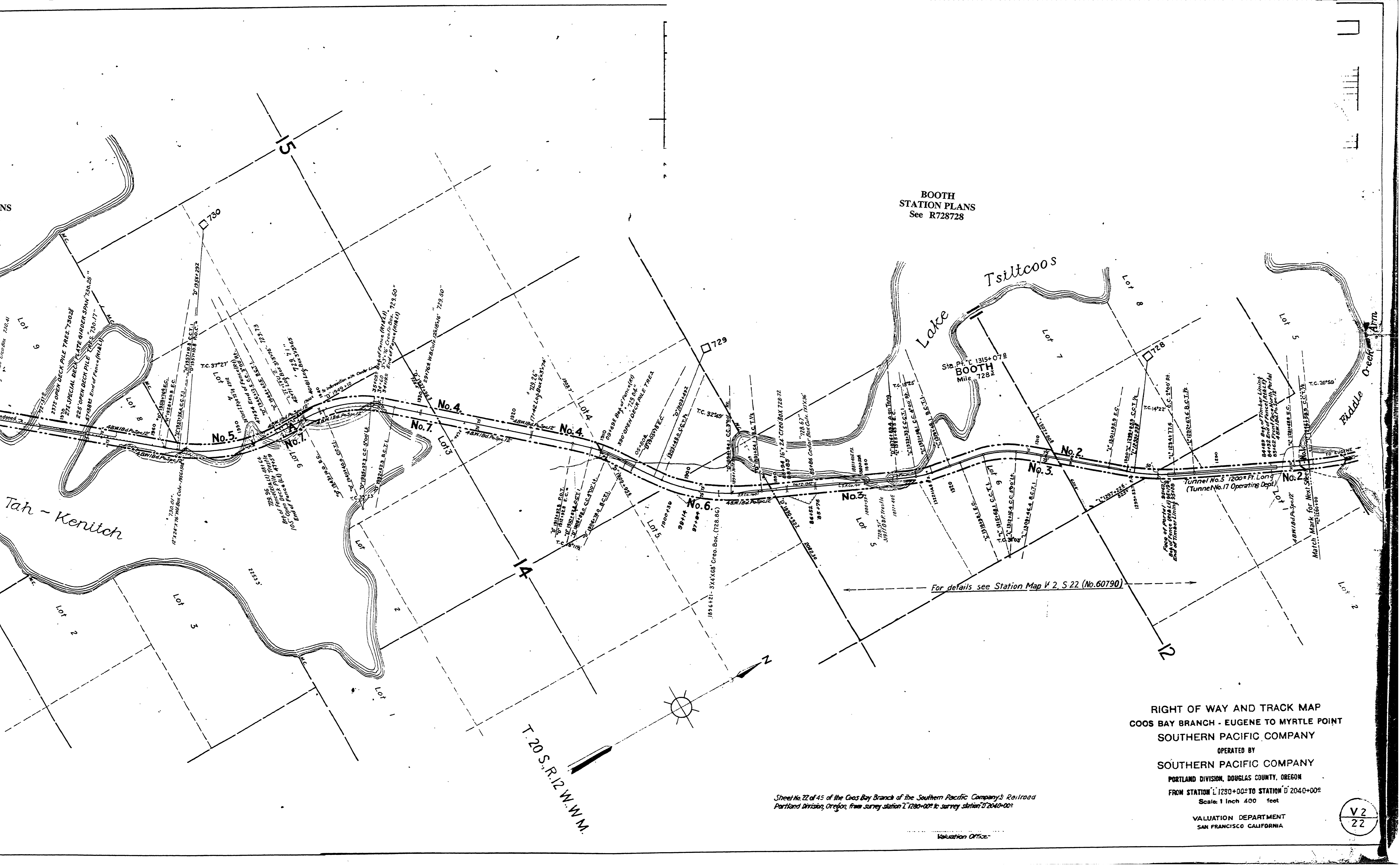


BASS
STATION PLANS
See R730731



T. 20 S. R. 12 W. W.M.



BOOTH
STATION PLANS
See R728728

Sta. P.C. 1315+07.8
BOOTH
Mile 728.2

For details see Station Map V. 2, S. 22 (No. 60790)

RIGHT OF WAY AND TRACK MAP
COOS BAY BRANCH - EUGENE TO MYRTLE POINT
SOUTHERN PACIFIC COMPANY
OPERATED BY
SOUTHERN PACIFIC COMPANY
PORTLAND DIVISION, DOUGLAS COUNTY, OREGON
FROM STATION L 1230+00 TO STATION D 2040+00
Scale: 1 Inch = 400 feet
VALUATION DEPARTMENT
SAN FRANCISCO CALIFORNIA

Sheet No. 22 of 45 of the Coos Bay Branch of the Southern Pacific Company's Railroad
Portland Division, Oregon, from survey station L 1230+00 to survey station D 2040+00

T. 20 S., R. 12 W., W. M.

V 2
22