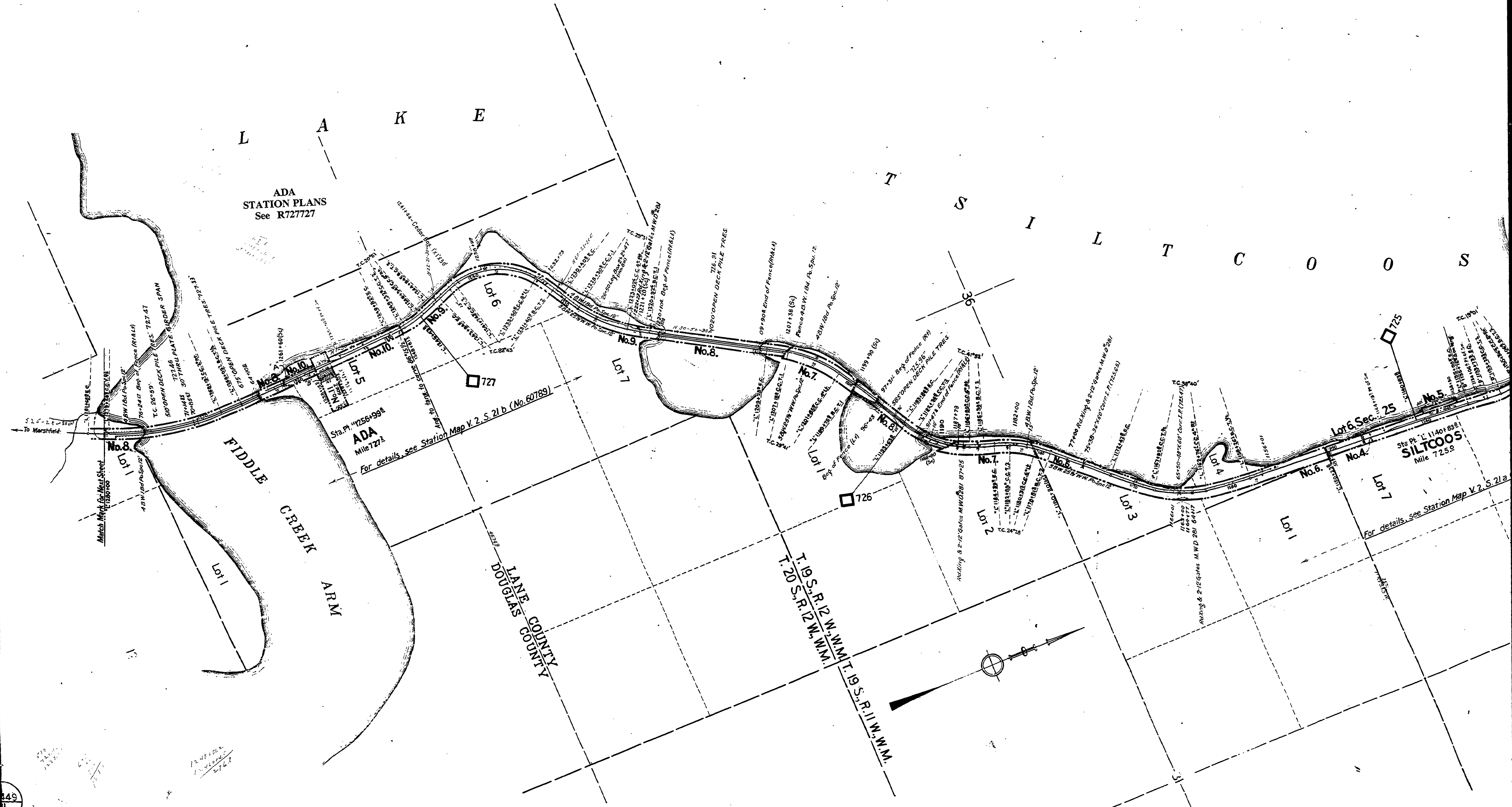


L
A
K
E

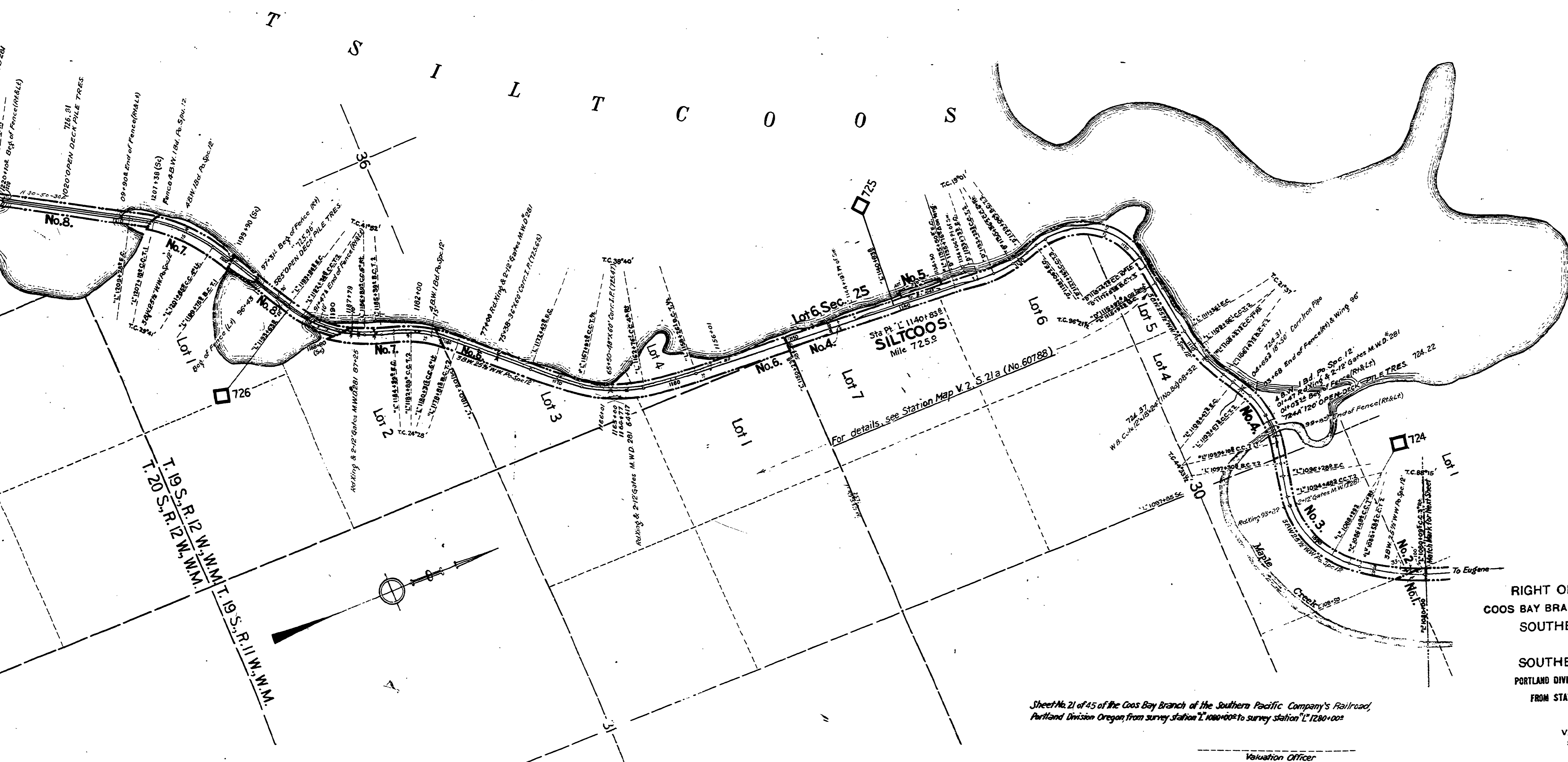
T
S
I
L
T
C
O
O
S

ADA
STATION PLANS
See R727727



Note 2: The 2.238 acs. prev. shown in area col. have been decr. disp. of as follows: 0.152 acs. by deed 21578, shown hatched (letter 'B'), 0.200 acs. by deed 21807, shown hatch

over State Land



For details see Station Map V. 2, S. 21a (No. 60788)

RIGHT OF WAY AND TRACK MAP
 COOS BAY BRANCH - EUGENE TO MYRTLE POINT
 SOUTHERN PACIFIC COMPANY
 OPERATED BY
 SOUTHERN PACIFIC COMPANY
 PORTLAND DIVISION, LANE & DOUGLAS COUNTIES, OREGON
 FROM STATION L'1080+00⁰ TO STATION L'1280+00⁰
 Scale: 1 inch = 400 feet

Sheet No. 21 of 45 of the Coos Bay Branch of the Southern Pacific Company's Railroad,
 Portland Division Oregon, from survey station L'1080+00⁰ to survey station L'1280+00⁰

VALUATION DEPARTMENT
 SAN FRANCISCO, CALIFORNIA

Valuation Officer

V. 2
 21