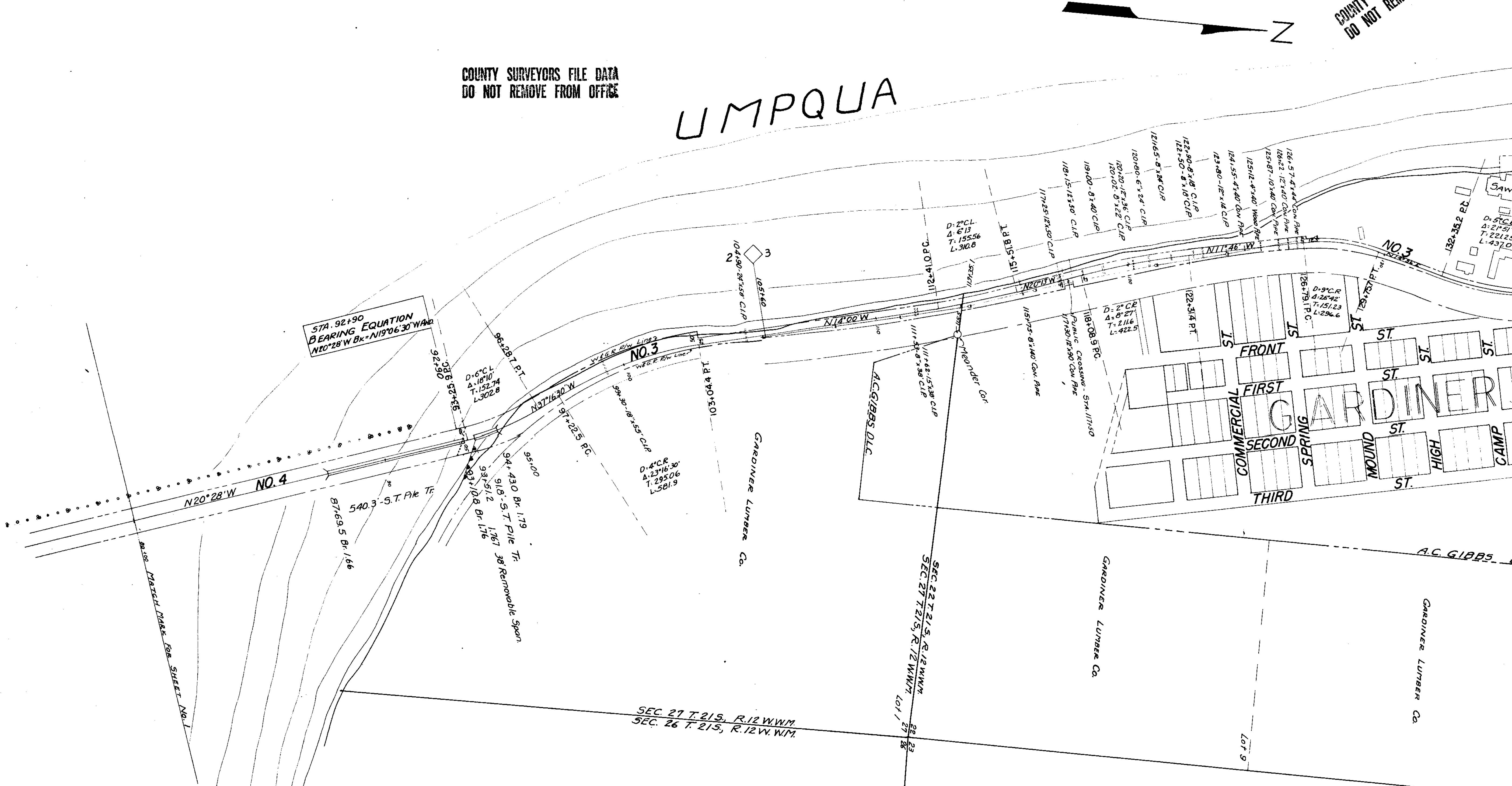


NUMBER	GRANTOR	GRANTEE	INSTRUMENT	DATE	RECORD	CUSTODIANS NO.	REMARKS
4	State of Oregon Land Board	W & G.R. Ry. Co	Easement	Aug 16, 1954	Unrecorded	94/48	
3	Gardiner Lumber Co	W & G.R. Ry. Co.	Easement	May 4, 1951	Vol. 224 P. 351 July 8, 1953	90/48	

COUNTY SURVEYORS FILE DATA
DO NOT REMOVE FROM OFFICE

COUNTY SURVEYORS FILE DATA
DO NOT REMOVE FROM OFFICE

UMPQUA



STA. 92+90
BEARING EQUATION
N20°28'W Bk=N19°06'30"W Δ

D=4° C.R.
Δ=23°16'30"
T=295.06
L=581.9

D=2° C.R.
Δ=8° 27'
T=211.6
L=422.5

D=5° C.R.
Δ=21° 51'
T=221.2
L=437.0

SEC. 27 T. 21 S., R. 12 W. W.M.
SEC. 26 T. 21 S., R. 12 W. W.M.

SEC. 22 T. 21 S., R. 12 W. W.M.
SEC. 27 T. 21 S., R. 12 W. W.M.
Lot 1

GARDINER LUMBER CO.

GARDINER LUMBER CO.

GARDINER LUMBER CO.

80+50 MATCH MARK FOR SHEET NO. 1

COUNTY SURVEYORS FILE DATA
DO NOT REMOVE FROM OFFICE

RIVER

FILED
MAR 1 1988
COUNTY SURVEYOR
DOUGLAS COUNTY, ORE.

COUNTY SURVEYORS FILE DATA
DO NOT REMOVE FROM OFFICE

