

Sta. Pt. 101+53 E
OAKS
Mile 570.6

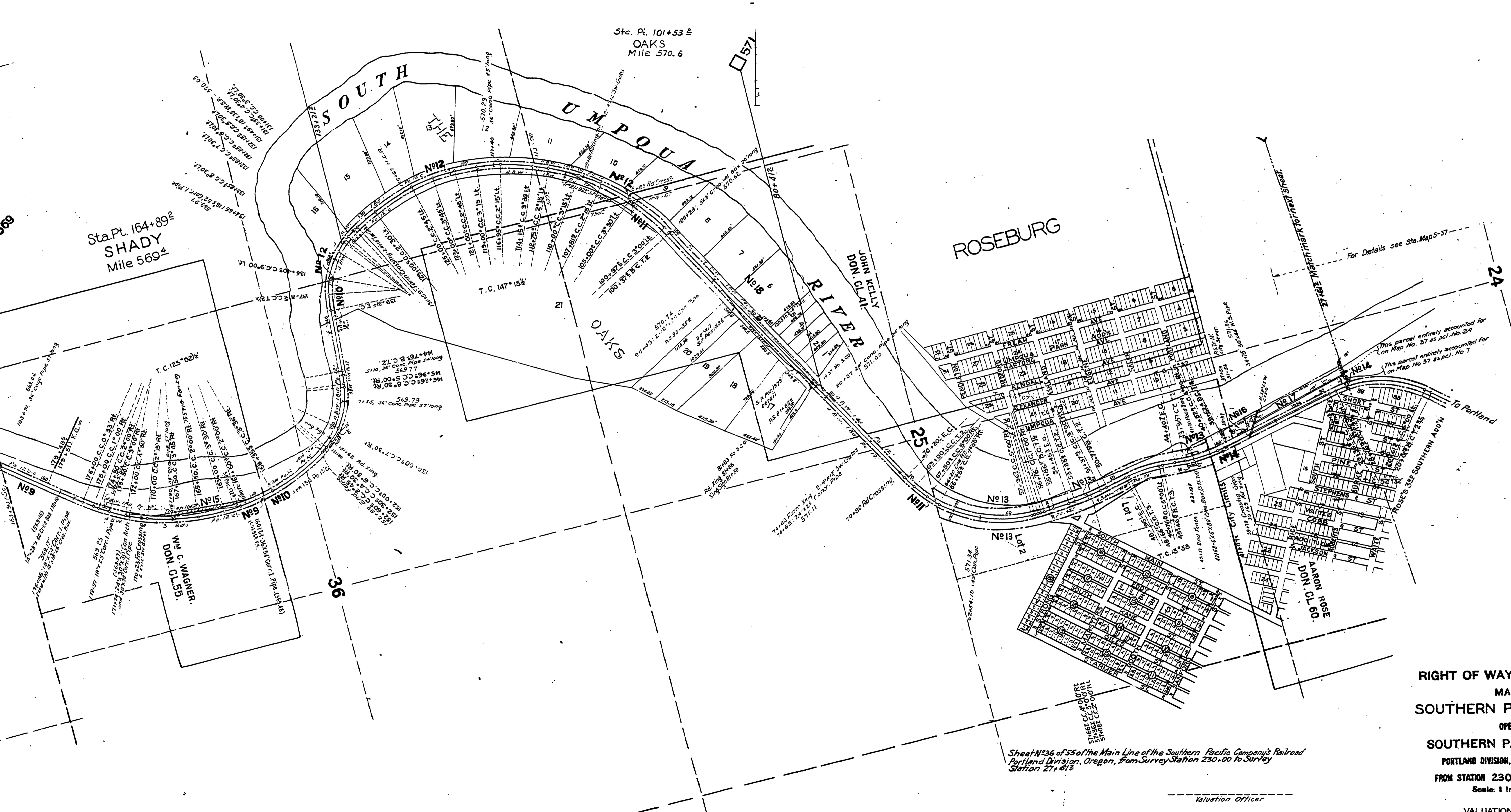
Sta. Pt. 164+89
SHADY
Mile 569+

T27S. R6 W. 1/4 M.M.
T28S. R6 W. 1/4 M.M.

Wm. C. WAGNER.
DON. C. LES.

Match for next sheet, 850000

OAKS
STATION PLANS
See R570571



RIGHT OF WAY AND TRACK MAP
MAIN LINE
SOUTHERN PACIFIC COMPANY
OPERATED BY
SOUTHERN PACIFIC COMPANY
PORTLAND DIVISION, DOUGLAS COUNTY, OREGON
FROM STATION 230+00 TO STATION 27+61.2
Scale: 1 Inch = 400 feet
VALUATION DEPARTMENT
SAN FRANCISCO, CALIFORNIA

Sheet No. 36 of 55 of the Main Line of the Southern Pacific Company's Railroad
Portland Division, Oregon, from Survey Station 230+00 to Survey
Station 27+61.2

Valuation Officer