

To San Francisco

N

29

**BRANDT
STATION PLANS**
See R516516

Sta Pt 2960+86'
BRANDT
Mile 516⁹

516
516
516

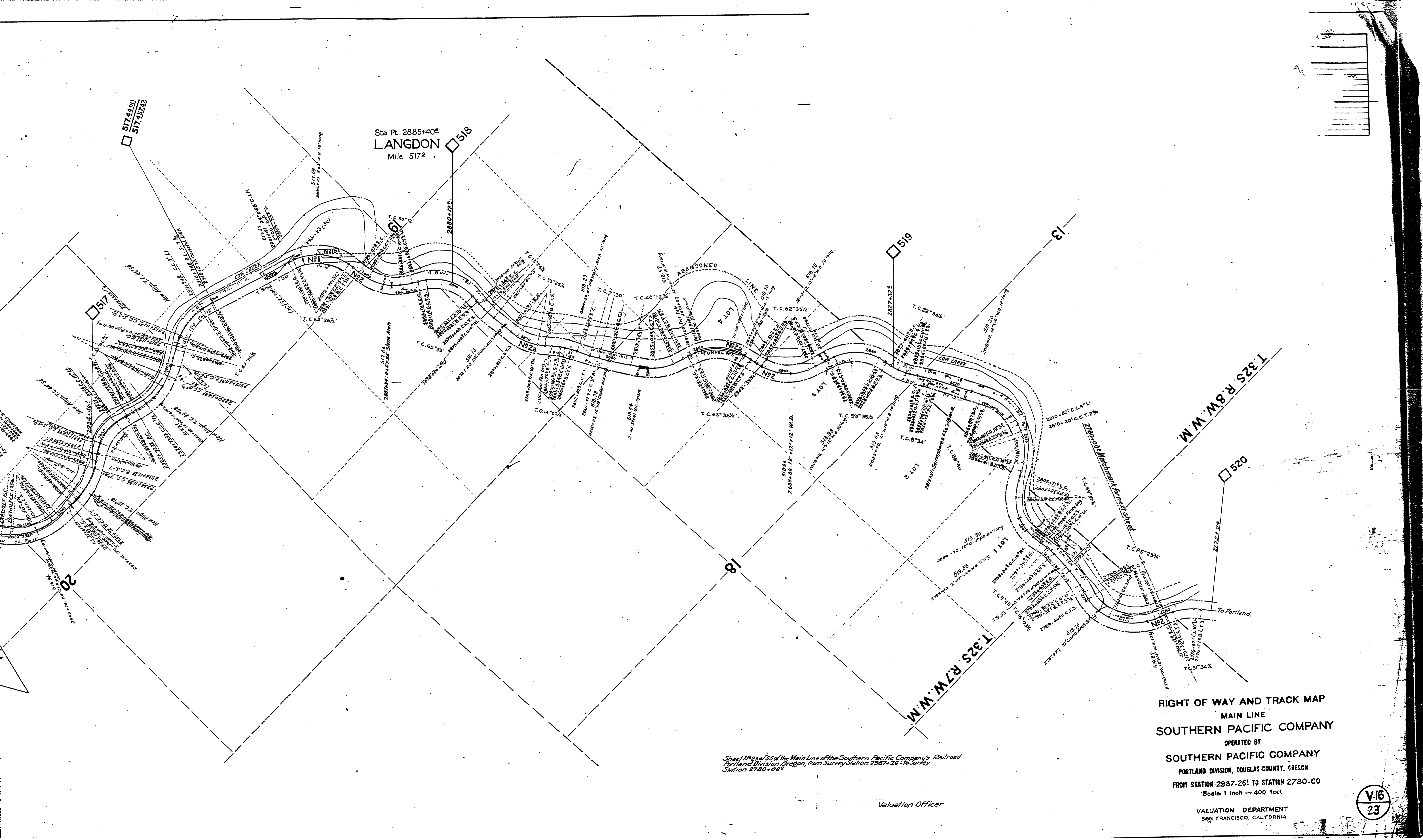
20

517
517

Sta Pt. 2885+40'
LANGDON
Mile 517⁹

518

ABANDONED



Sta. Pt. 2885+40^E
LANGDON
 Mile 517^E

Sheet No 23 of 35 of the Main Line of the Southern Pacific Company's Railroad
 Portland Division, Oregon, from Survey Station 2887+26 to Survey
 Station 2780+00

Valuation Officer

RIGHT OF WAY AND TRACK MAP
 MAIN LINE
SOUTHERN PACIFIC COMPANY
 OPERATED BY
SOUTHERN PACIFIC COMPANY
 PORTLAND DIVISION, DOUGLAS COUNTY, OREGON
 FROM STATION 2987-26 TO STATION 2780-00
 Scale: 1 inch = 400 feet
 VALUATION DEPARTMENT
 SAN FRANCISCO, CALIFORNIA

V16
 23