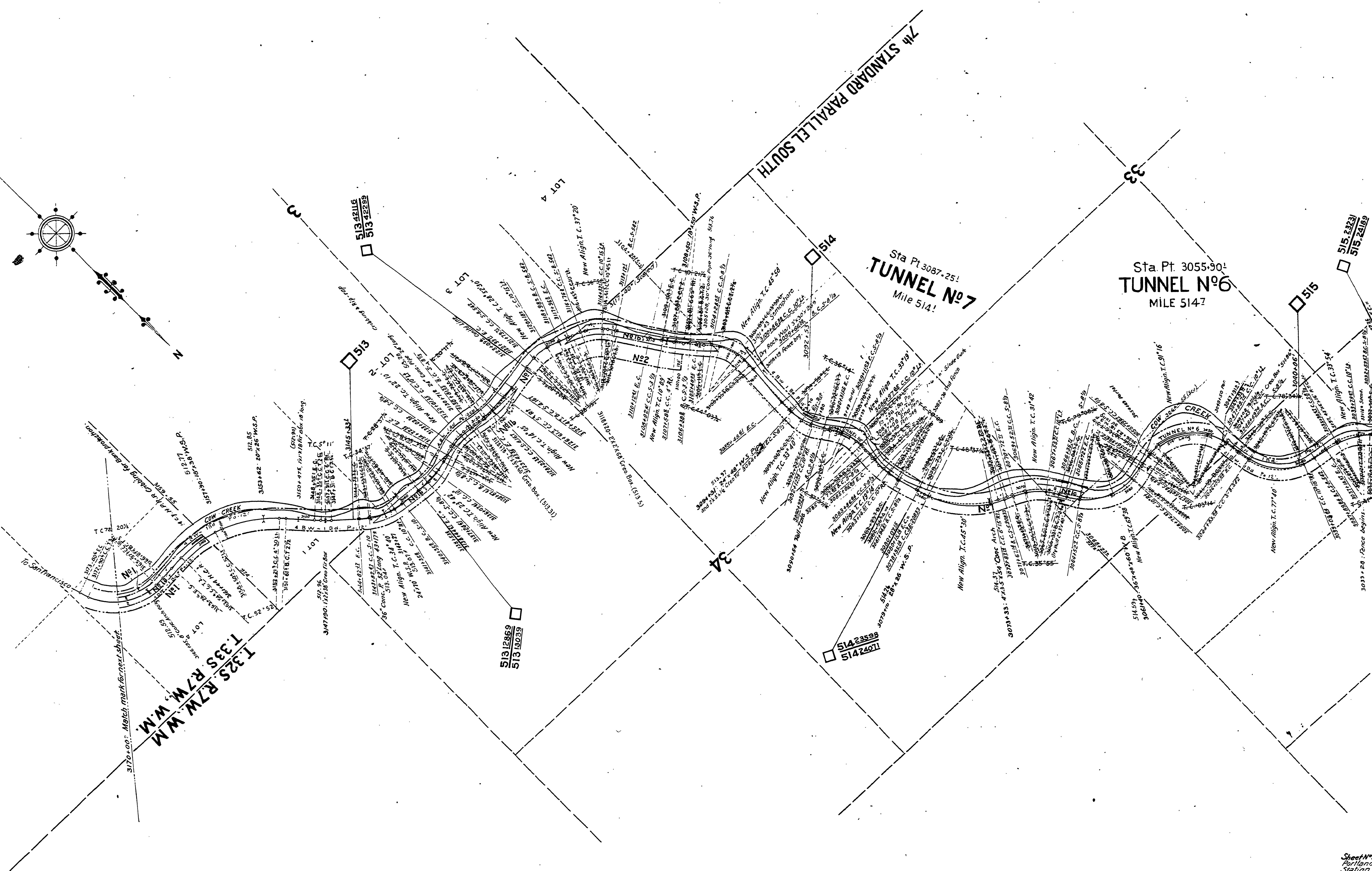


2



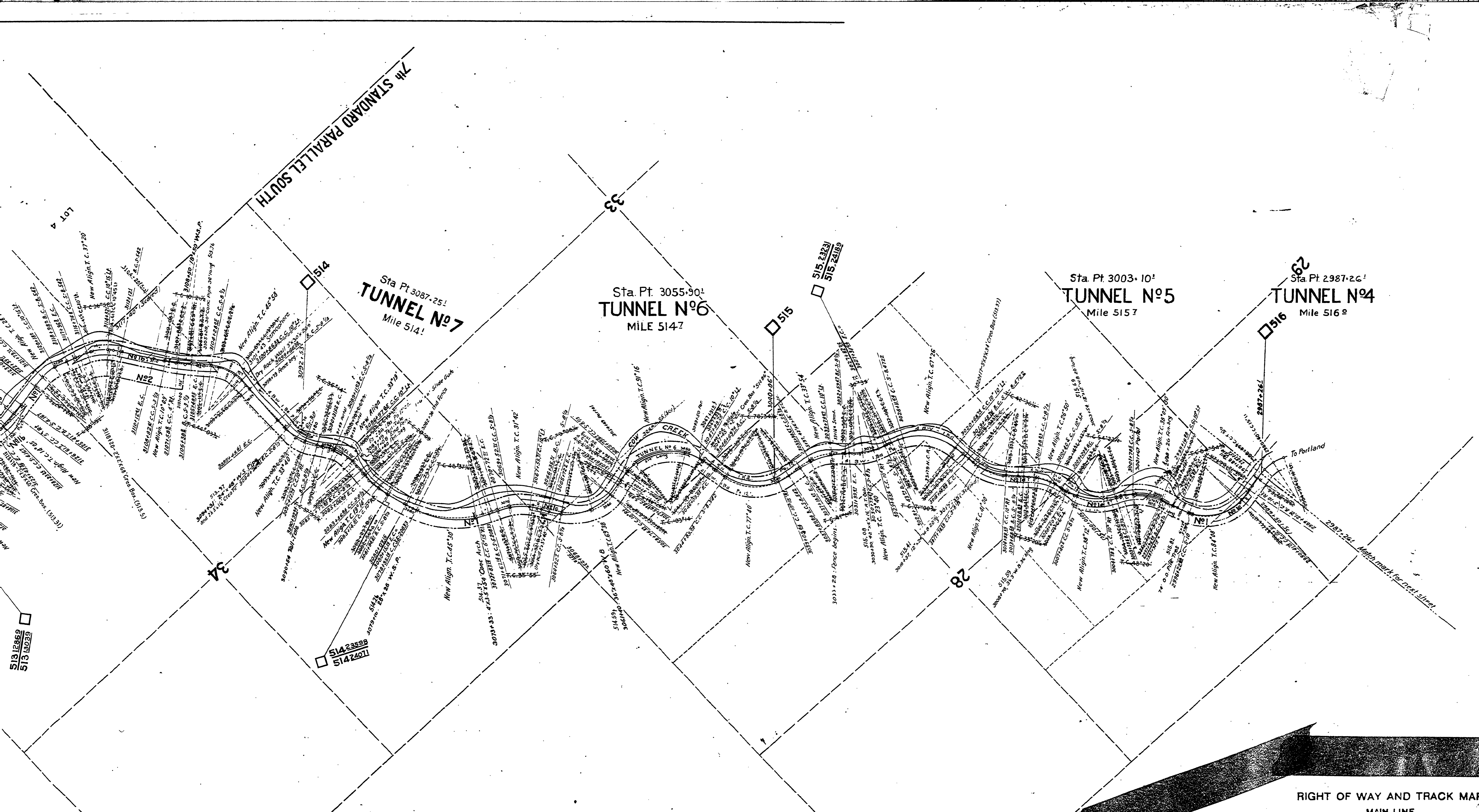
Match with nearest sheet.
3170+00
T. 325 R. 7 W. W. M.
3175+00

Sta Pt 3087+25!
TUNNEL No. 7
Mile 514!

Sta Pt 3055+90!
TUNNEL No. 6
MILE 514-7

Sheet No. 22 of
Portland Div.
Station 298.

50



RIGHT OF WAY AND TRACK MAP
 MAIN LINE
 SOUTHERN PACIFIC COMPANY
 OPERATED BY
 SOUTHERN PACIFIC COMPANY
 PORTLAND DIVISION, DOUGLAS COUNTY, OREGON
 FROM STATION 3170.00 TO STATION 2987.26!
 Scale: 1 Inch = 400 feet
 VALUATION DEPARTMENT
 SAN FRANCISCO, CALIFORNIA

Sheet No. 22 of 55 of the Main Line of the Southern Pacific Company's Railroad
 Portland Division, Oregon. From Survey Station 3170+00 to Survey
 Station 2987+26!

Valuation Officer

V-16
 22