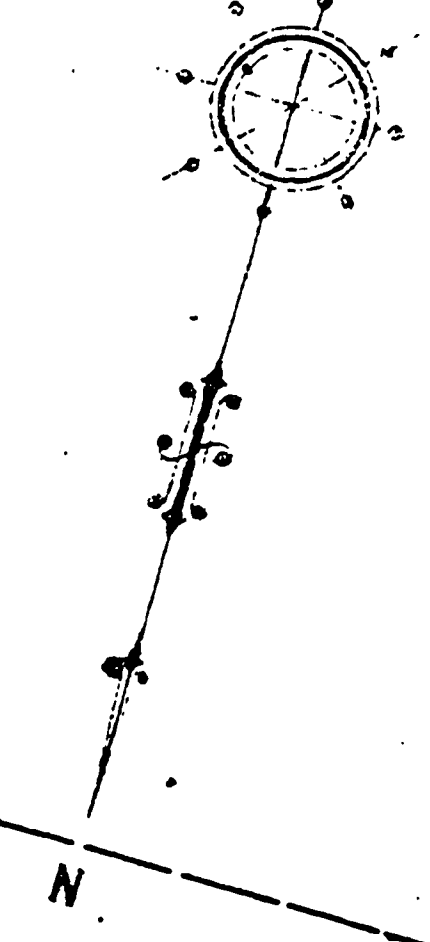


Note 6: The 36.766 acs. previously shown in area col. have been decr. and disp. of as follows: 1.819 acs. by deed 20199, 20.3 acs.



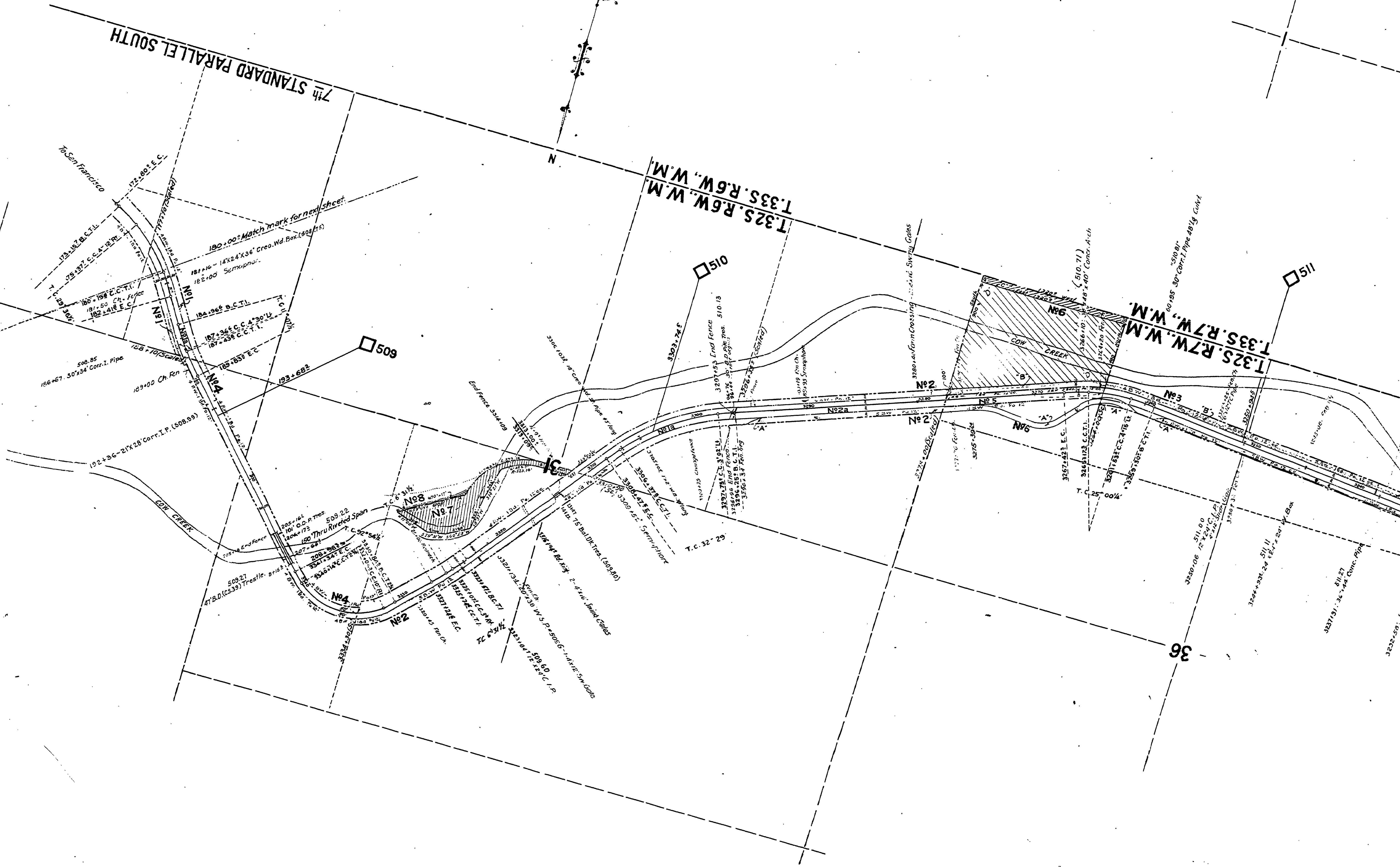
7th STANDARD PARALLEL SOUTH

T.33S. R.6W. W.M.

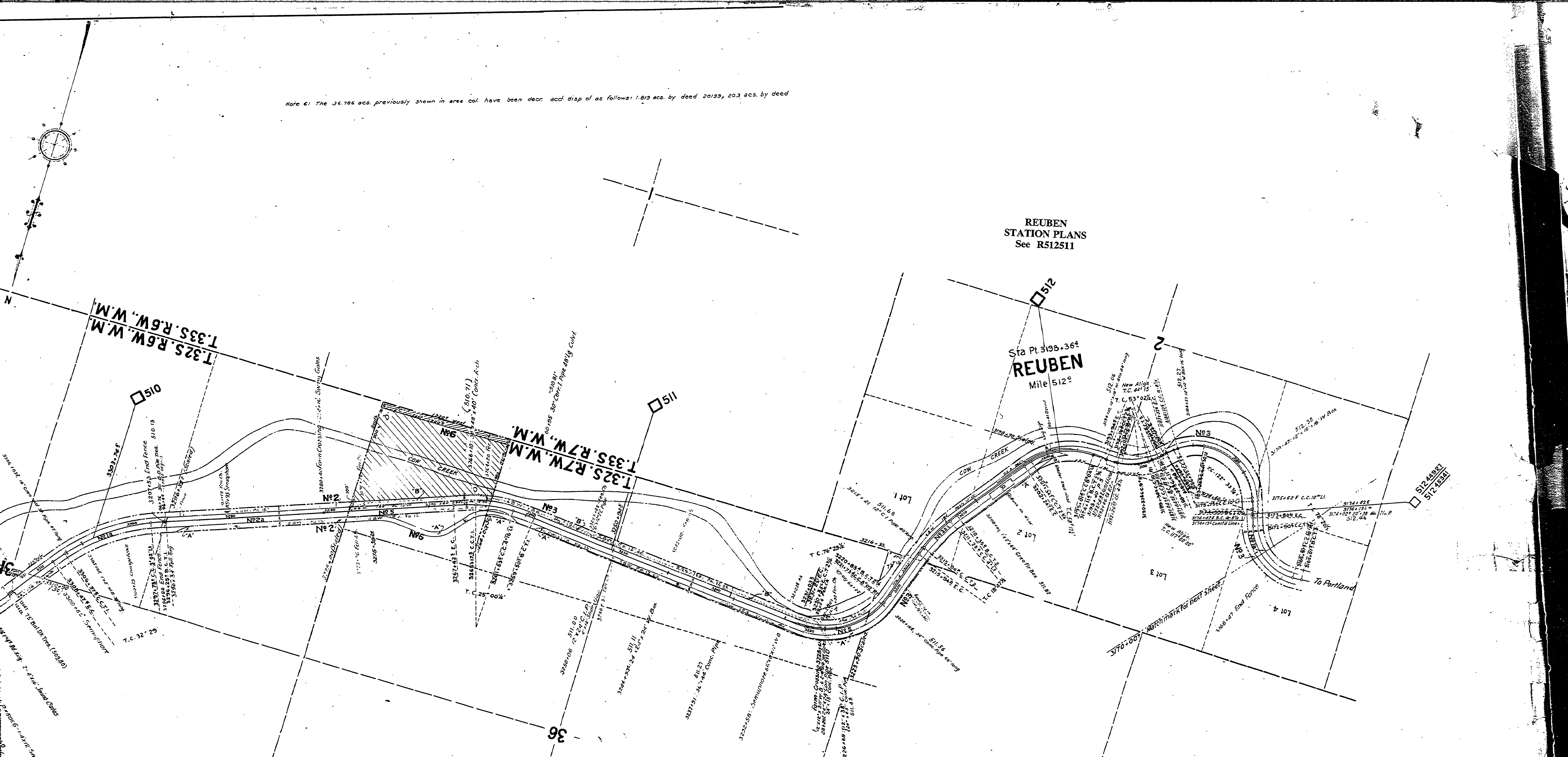
T.33S. R.7W. W.M.

32

15



Note 6: The 36.786 acs. previously shown in area col. have been deor. acc'd disp of as follows: 1.812 acs. by deed 20199, 203 acs. by deed



REUBEN
STATION PLANS
See R512511

Sta Pt. 3193+364
REUBEN
Mile 512°

RIGHT OF WAY AND TRACK MAP
MAIN LINE
SOUTHERN PACIFIC COMPANY
OPERATED BY
SOUTHERN PACIFIC COMPANY
PORTLAND DIVISION, DOUGLAS COUNTY, OREGON
FROM STATION 180+00 TO STATION 3170+00
Scale: 1 inch = 400 feet

Sheet No. 21 of 55 of the Main Line of the Southern Pacific Company's Railroad,
Portland Division, Oregon, from Survey Station 180+00 to Survey
Station 3170+00.

Valuation Officer **35**

VALUATION DEPARTMENT
SAN FRANCISCO, CALIFORNIA

V-16
21