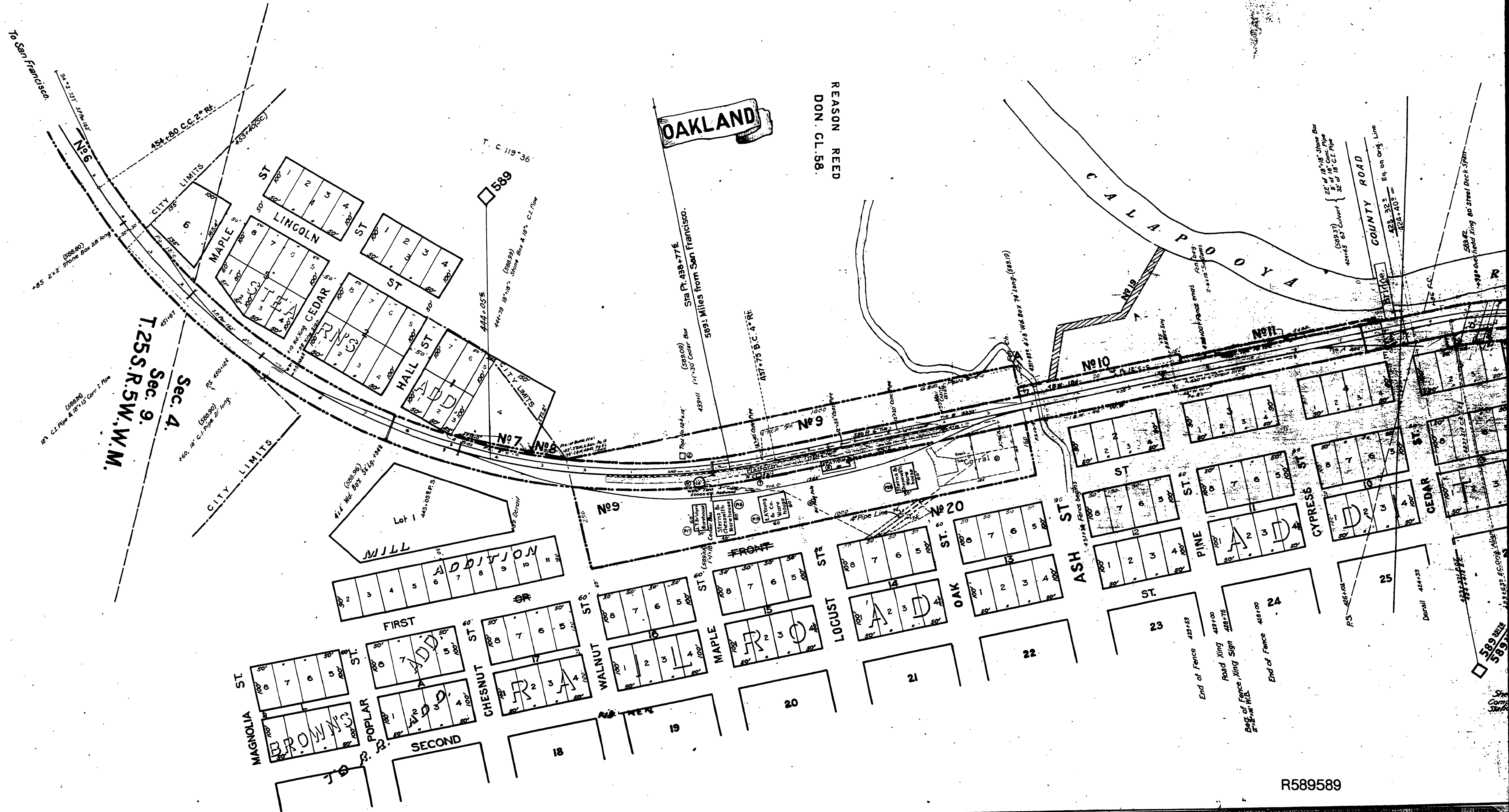
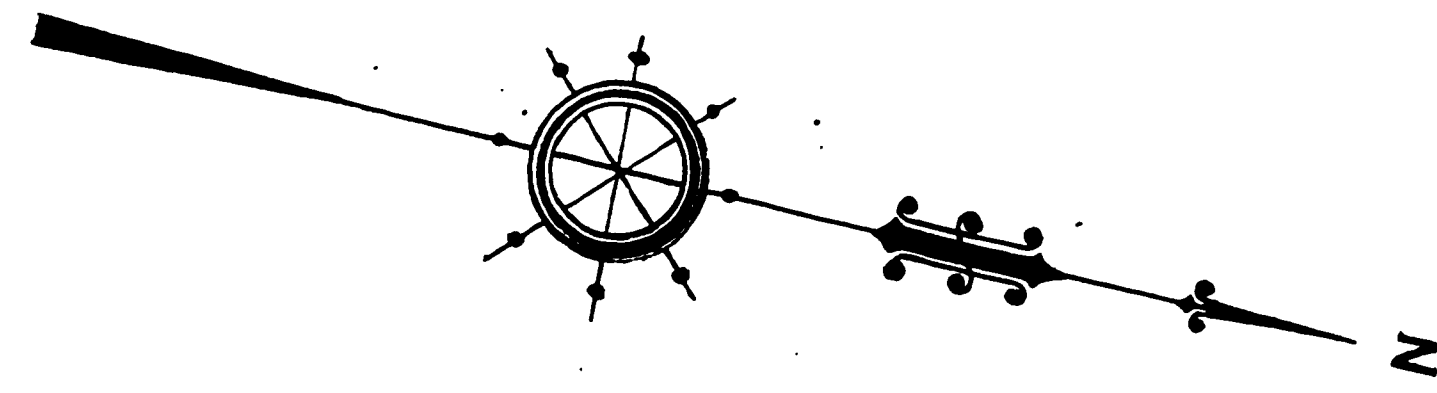


Note No.1: Total area acqd by this deed 0.923 acs, of which 0.823 acs are shown as Part B and 0.100 acs as shown by letter A are included in Part 10.
 Note No.2: Oregon and California Railroad Company was purchased by the Southern Pacific Company Jan. 3, 1927 by B. & S. Deed Recd. No. 19397 and recorded Aug. 24, 1927 in Deed Book 83, Page 390. Records of Douglas County, Oregon.
 Note No.3: The 6000 sq. ft. previously shown in area col has been eliminated and shown hatched, acct. pipe line retired A.F.E. 65531 Oct. 20, 1925. Memo. c.f.c. 1254.



R589589