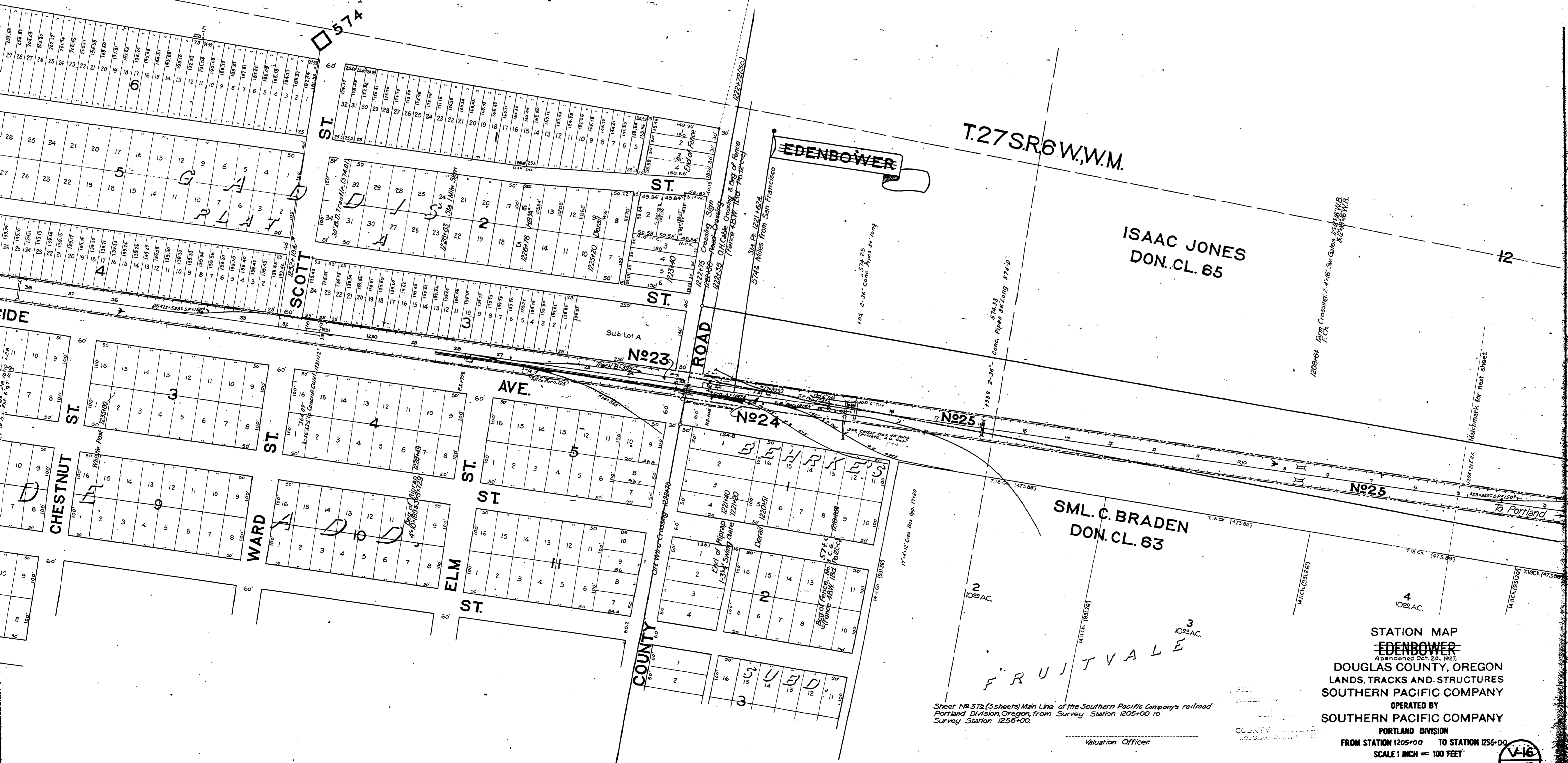
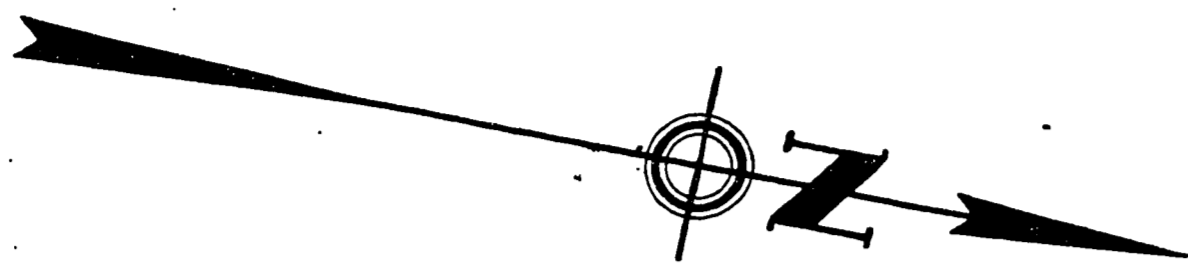


Note 2: 29622 sq. ft. acqd; 6142 sq. ft. shown as Par. 43, 23480 sq. ft. shown as Par. 44

JEREMIAH HUNTLEY
DON. CL. 56



R574574

Sheet NR 378 (3 sheets) Main Line of the Southern Pacific Company's railroad
Portland Division, Oregon, from Survey Station 1205+00 to
Survey Station 1256+00.

Valuation Officer

STATION MAP
EDENBOWER
ABANDONED OCT. 20, 1927
DOUGLAS COUNTY, OREGON
LANDS, TRACKS AND STRUCTURES
SOUTHERN PACIFIC COMPANY
OPERATED BY
SOUTHERN PACIFIC COMPANY

PORTLAND DIVISION
FROM STATION 1205+00 TO STATION 1256+00
SCALE 1 INCH = 100 FEET

VALUATION DEPARTMENT
SAN FRANCISCO, CALIFORNIA

