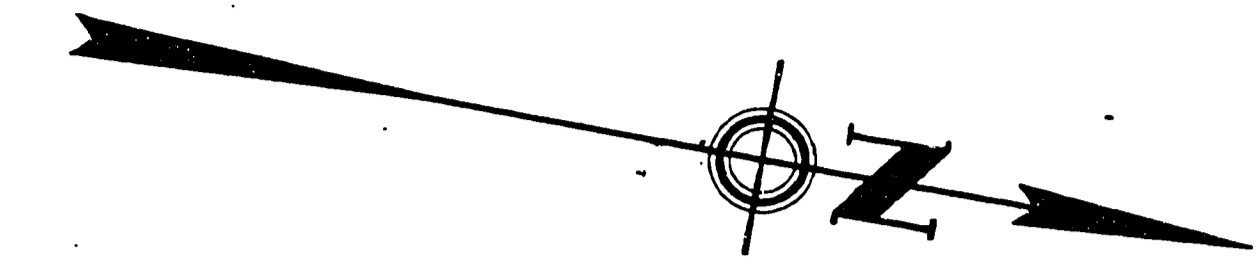


RIVER

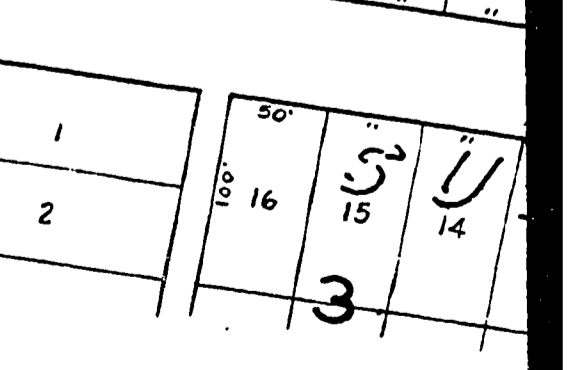
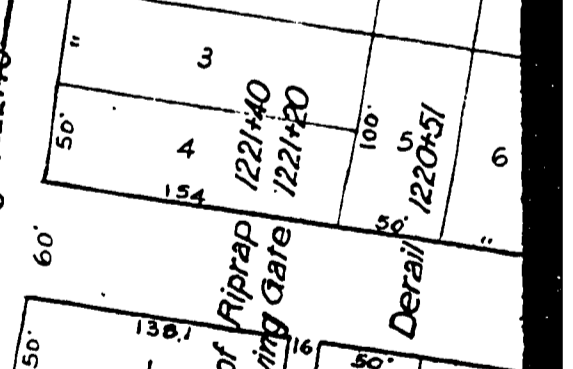
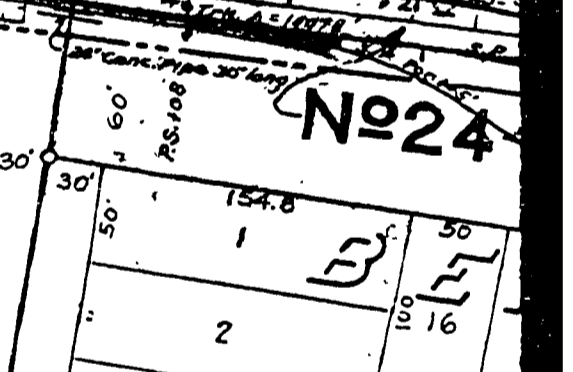
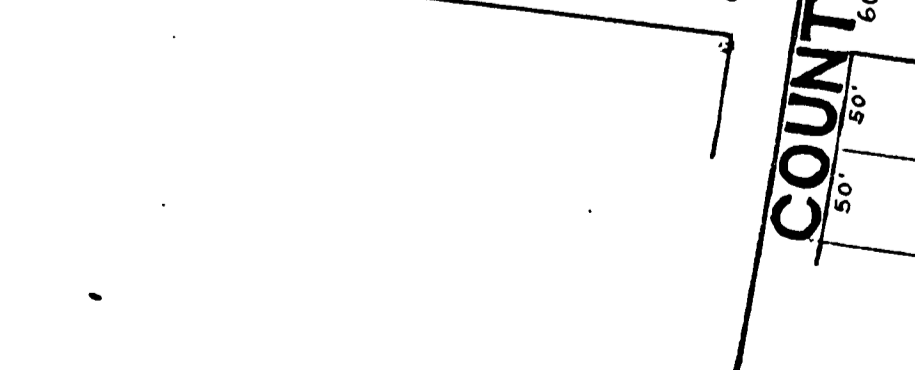
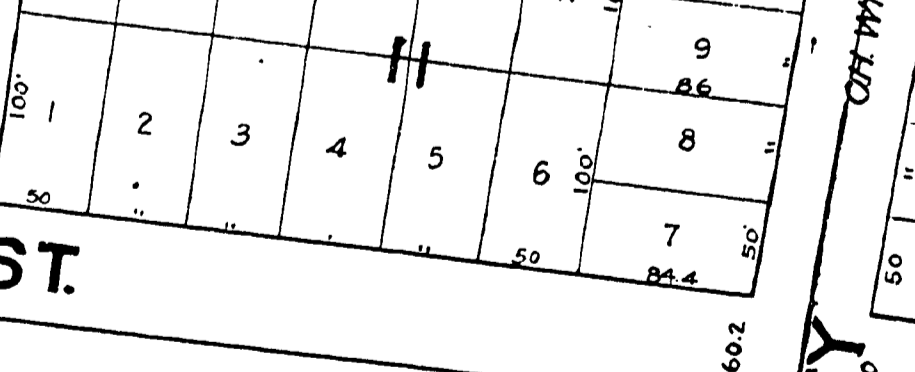
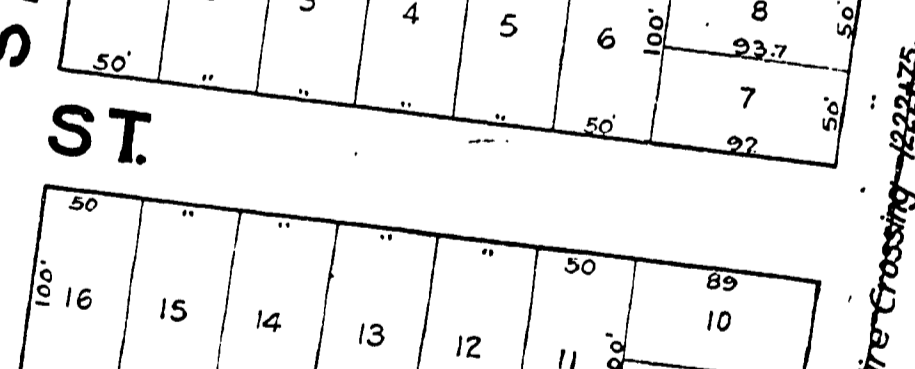
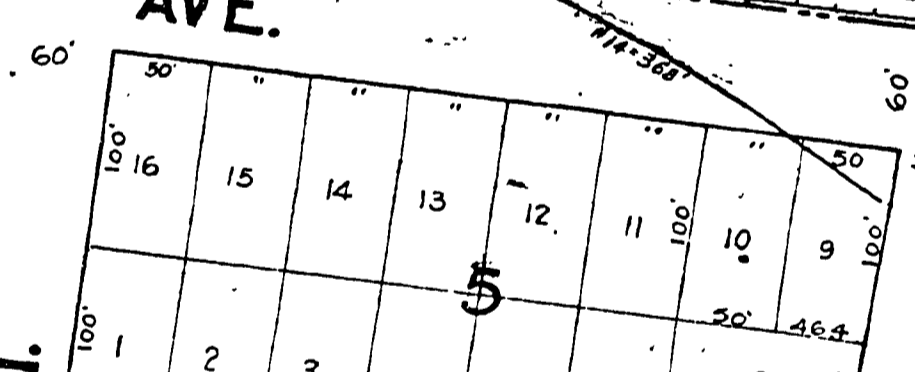
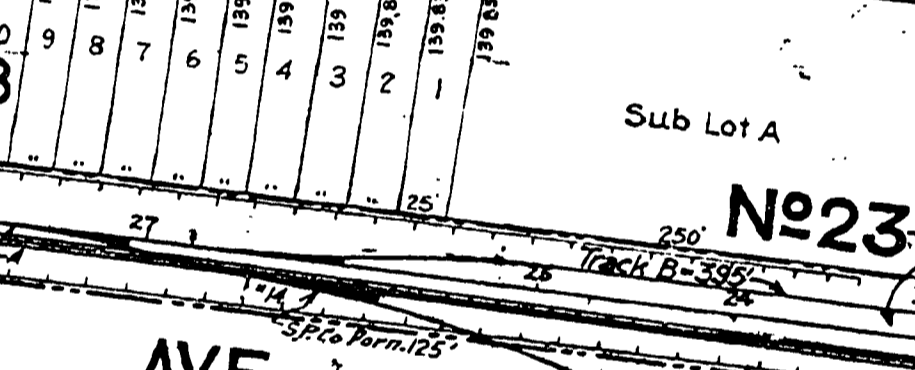
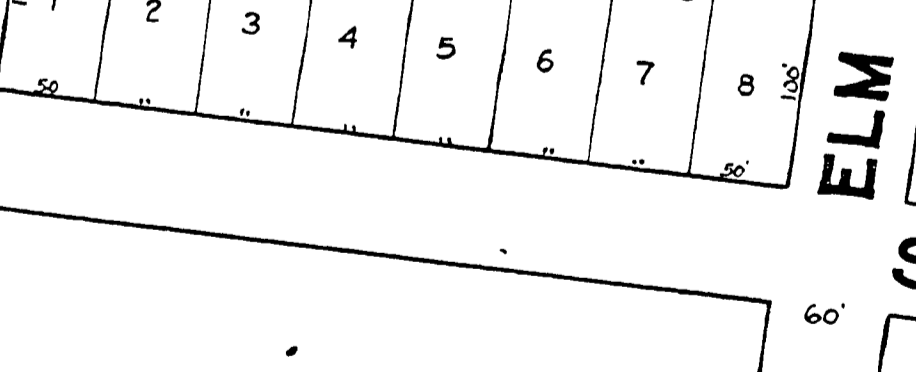
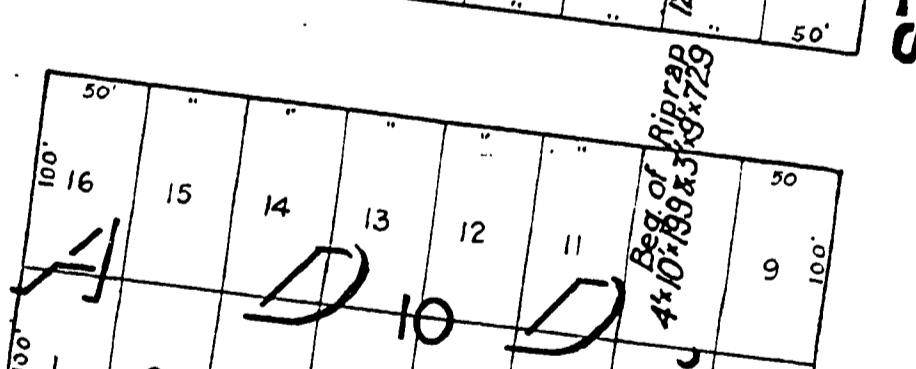
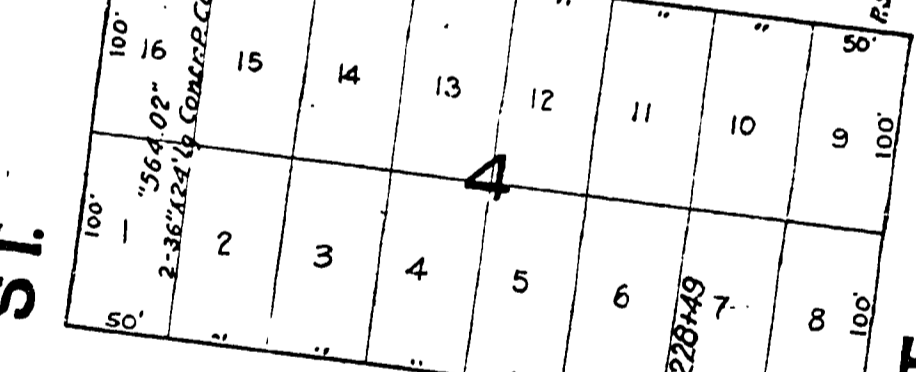
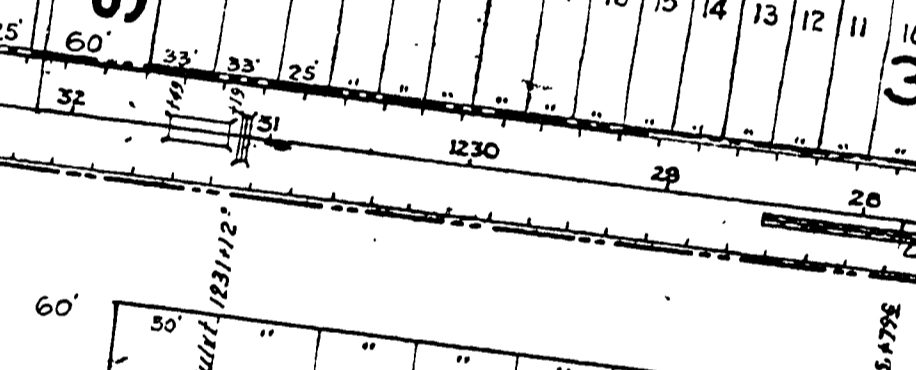
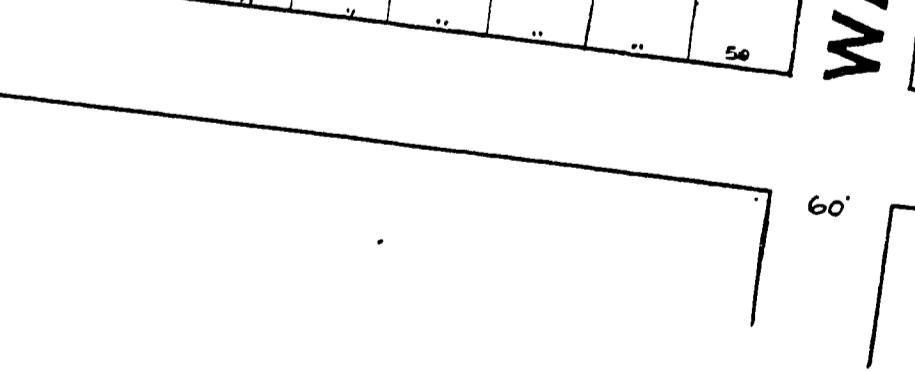
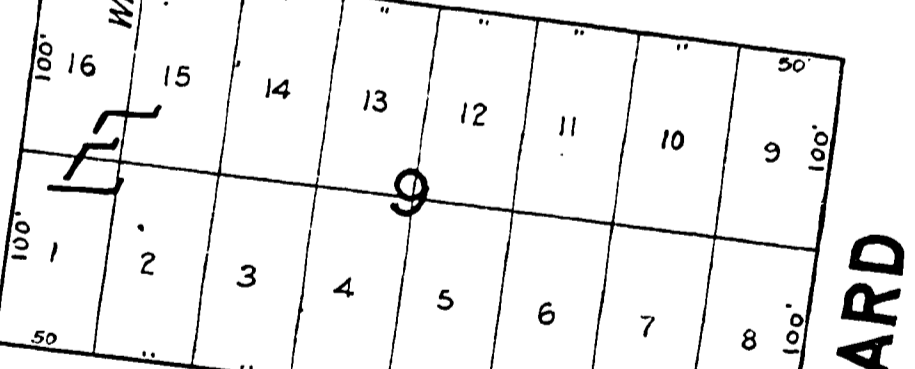
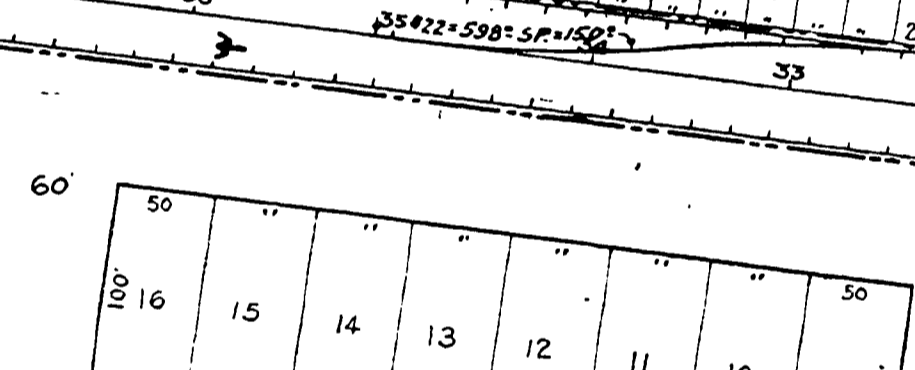
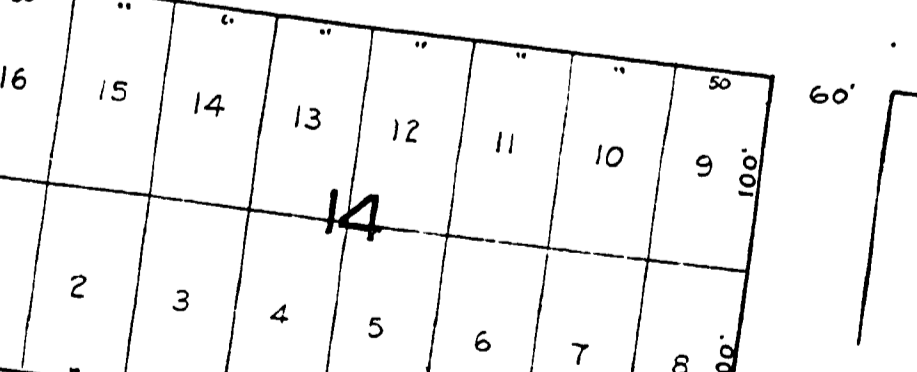
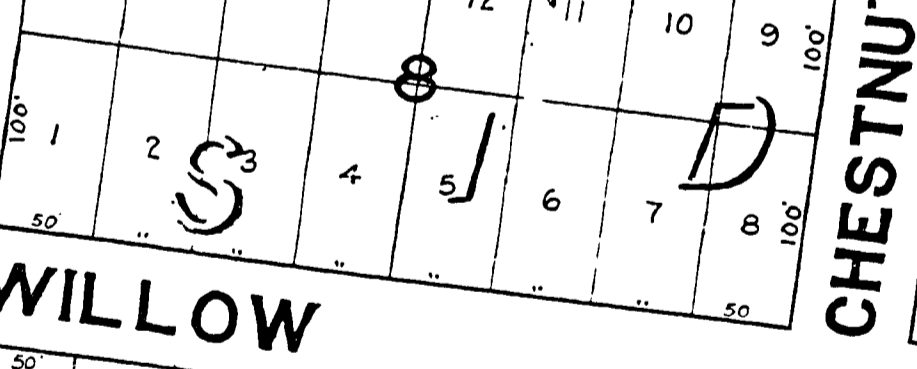
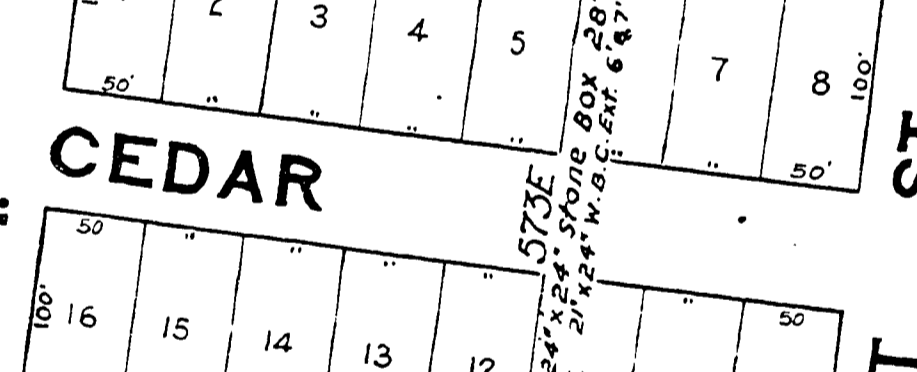
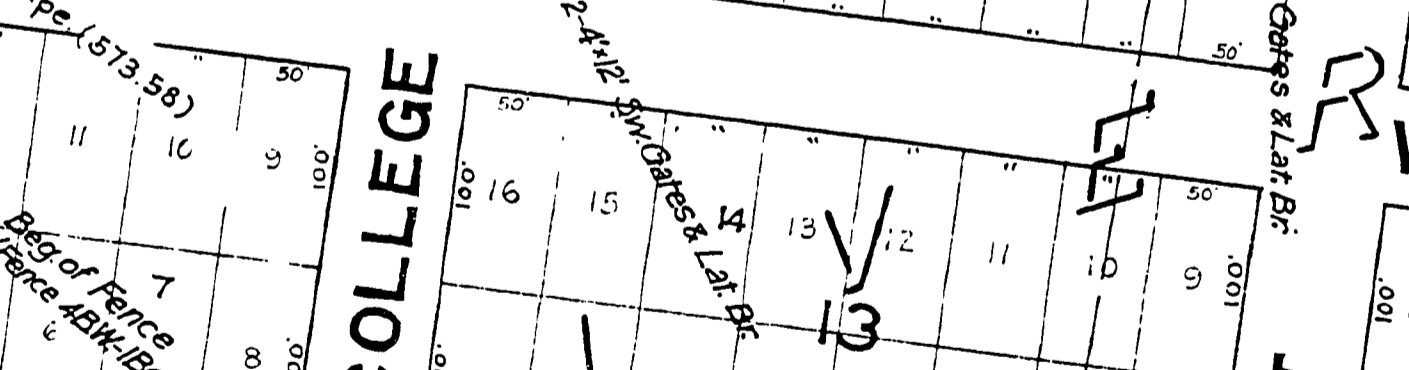
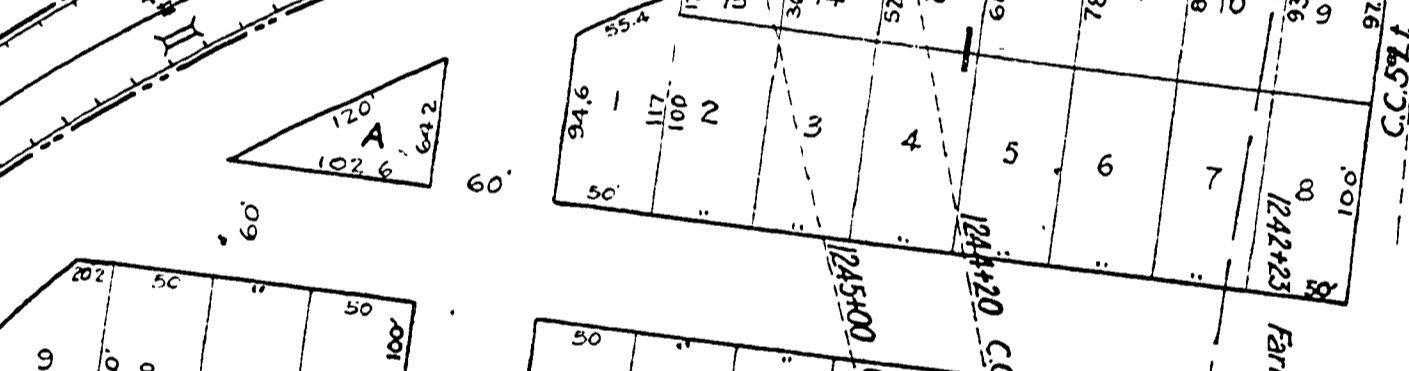
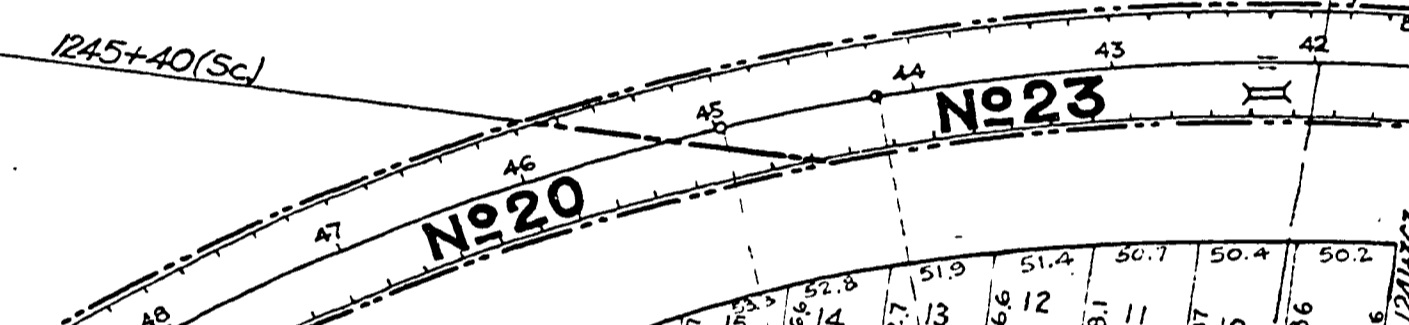
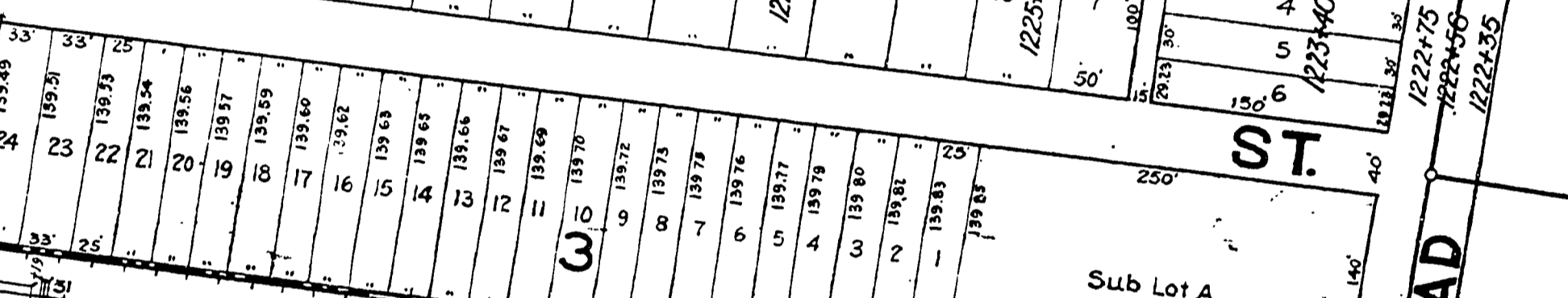
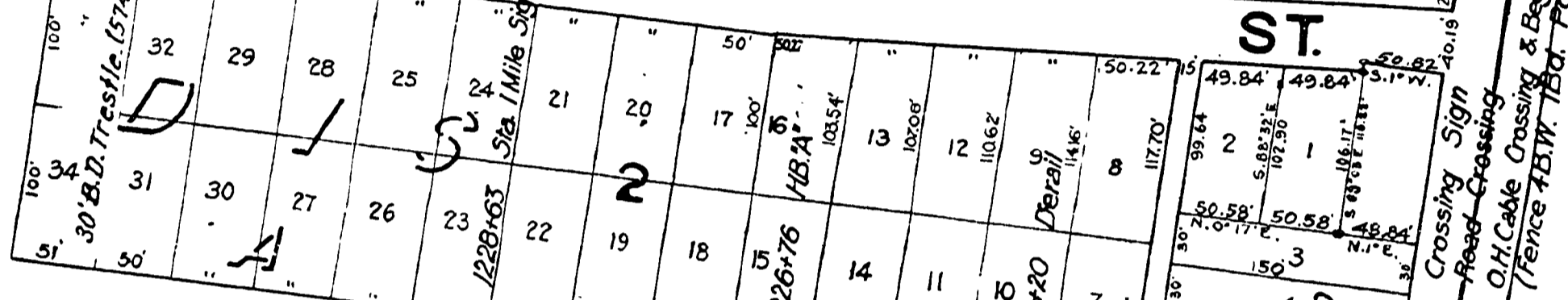
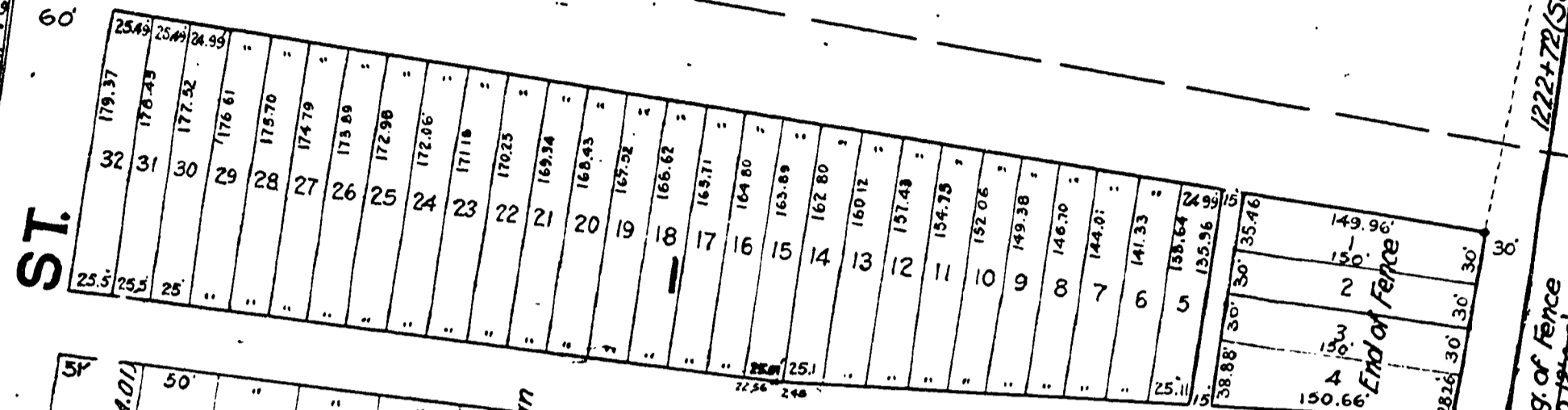
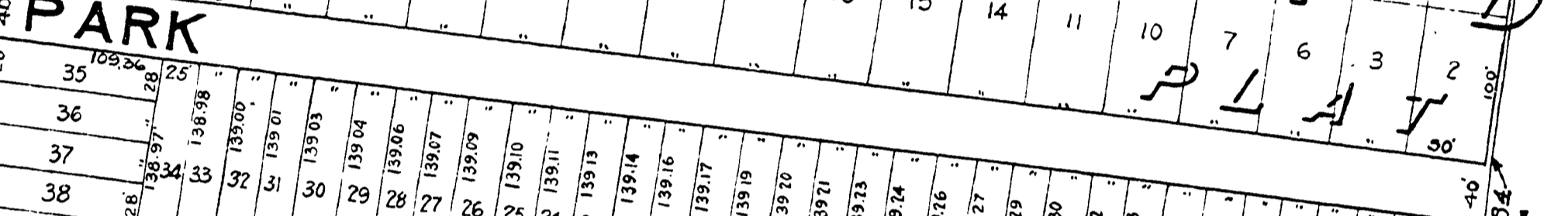
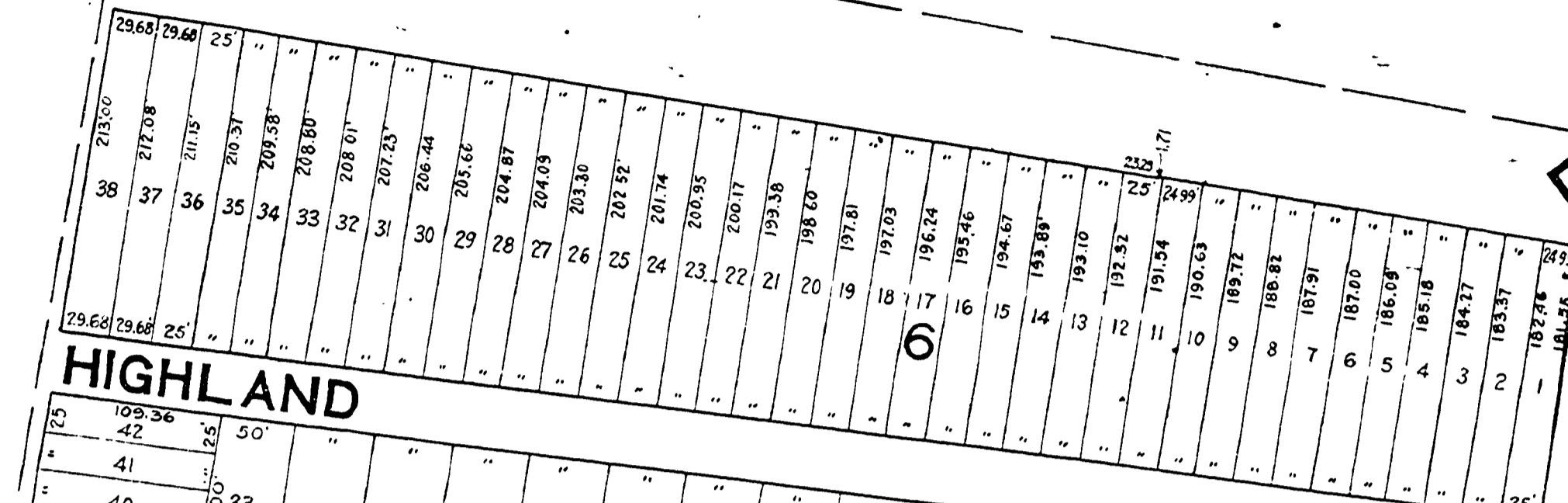
UMPQUA

JEREMIAH HUNTLEY  
DON. CL. 56



13

574



SOUTH

U.S. GOV'T. RES.

City Limit Sign

City Limit

San Francisco

Matchmark for next sheet

City Limit

City Limit

City Limit

City Limit

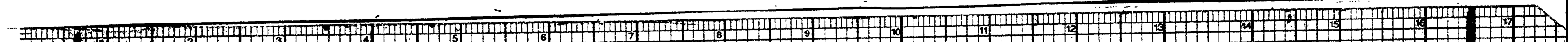
City Limit

City Limit

City Limit

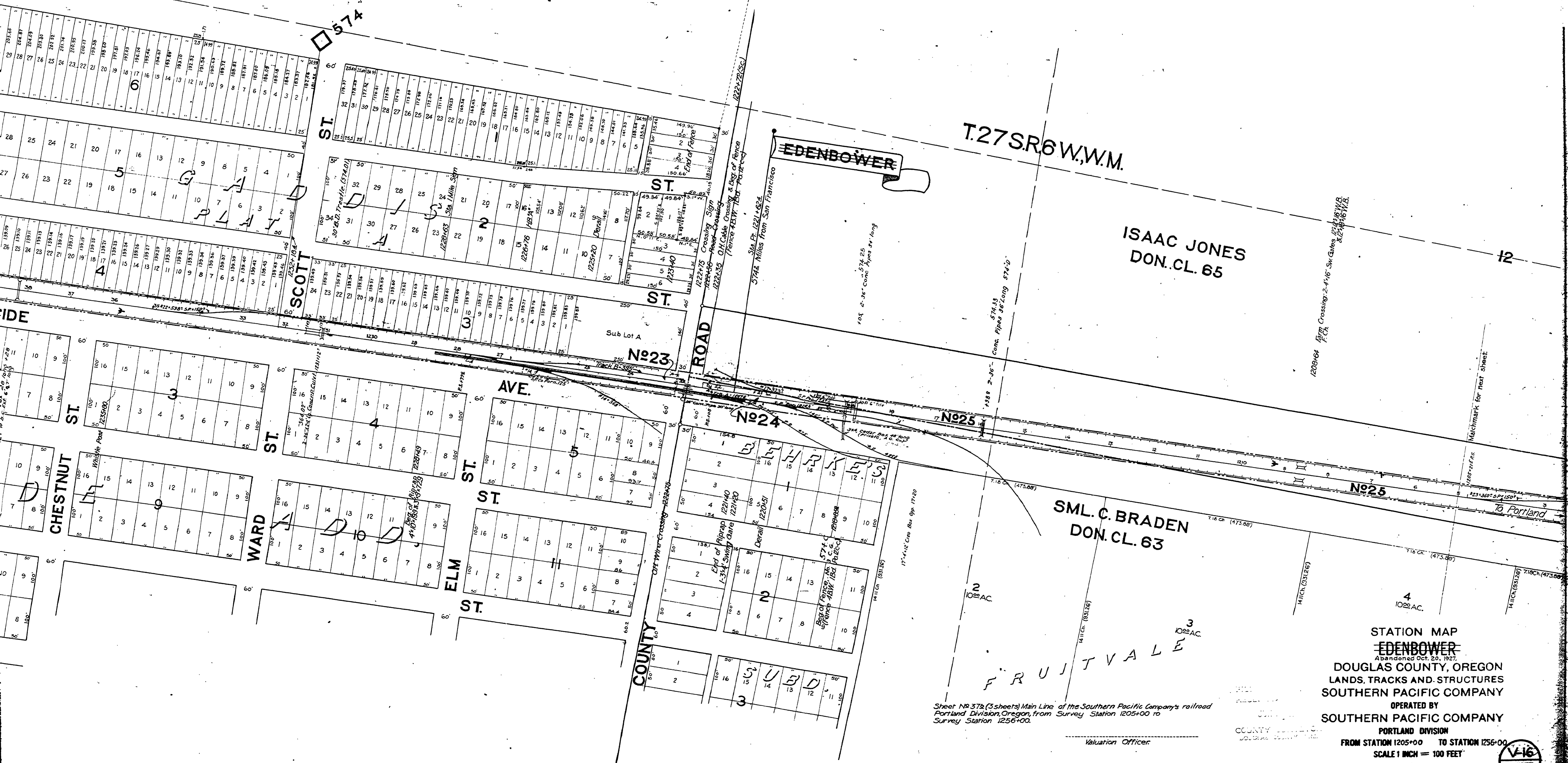
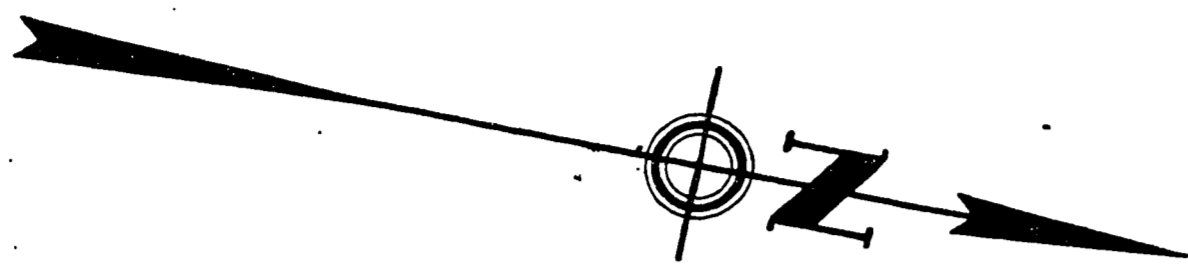
61448

R574574



Note 2: 29622 sq. ft. acqd; 6142 sq. ft. shown as Par. 43, 23480 sq. ft. shown as Par. 44

JEREMIAH HUNTLEY  
DON. CL. 56



R574574

Sheet NR 378 (3 sheets) Main Line of the Southern Pacific Company's railroad  
Portland Division, Oregon, from Survey Station 1205+00 to  
Survey Station 1256+00.

Valuation Officer

STATION MAP  
**EDENBOWER**  
ABANDONED OCT. 20, 1927  
DOUGLAS COUNTY, OREGON  
LANDS, TRACKS AND STRUCTURES  
SOUTHERN PACIFIC COMPANY  
OPERATED BY  
SOUTHERN PACIFIC COMPANY

PORTLAND DIVISION  
FROM STATION 1205+00 TO STATION 1256+00  
SCALE 1 INCH = 100 FEET

VALUATION DEPARTMENT  
SAN FRANCISCO, CALIFORNIA

