

SOUTH

Sta. Pt. 804+46.5
ROUND PRAIRIE
M.P. 557.3

128 S. ROW W.M.
129 S. R.G.W. W.M.

UMPOUA

(556.84)
889+40 36" Conc. Pipe Culv.

(556.83)
884+81 8" x 30" T.C. Tile Drain

(557.01)
820+39 18" x 18" Conc. Pipe Culv.
820+30.3

(557.10)
815+88 18" x 36" Conc. Pipe Culv.

818+46 Road Crossing P.U.C. 0-5571

(557.23)
809+07 36" x 36" Conc. Pipe Culv.

804+45.5
804+10 Pipe Line Crossing

(557.42)
798+78 Conc. 18" Pipe Culv.

797+24 8" x 30" R.I. Xing

796+05 51"

To San Francisco

James A. Clark D.L.C. RD

All Fir Lumber Company Lease

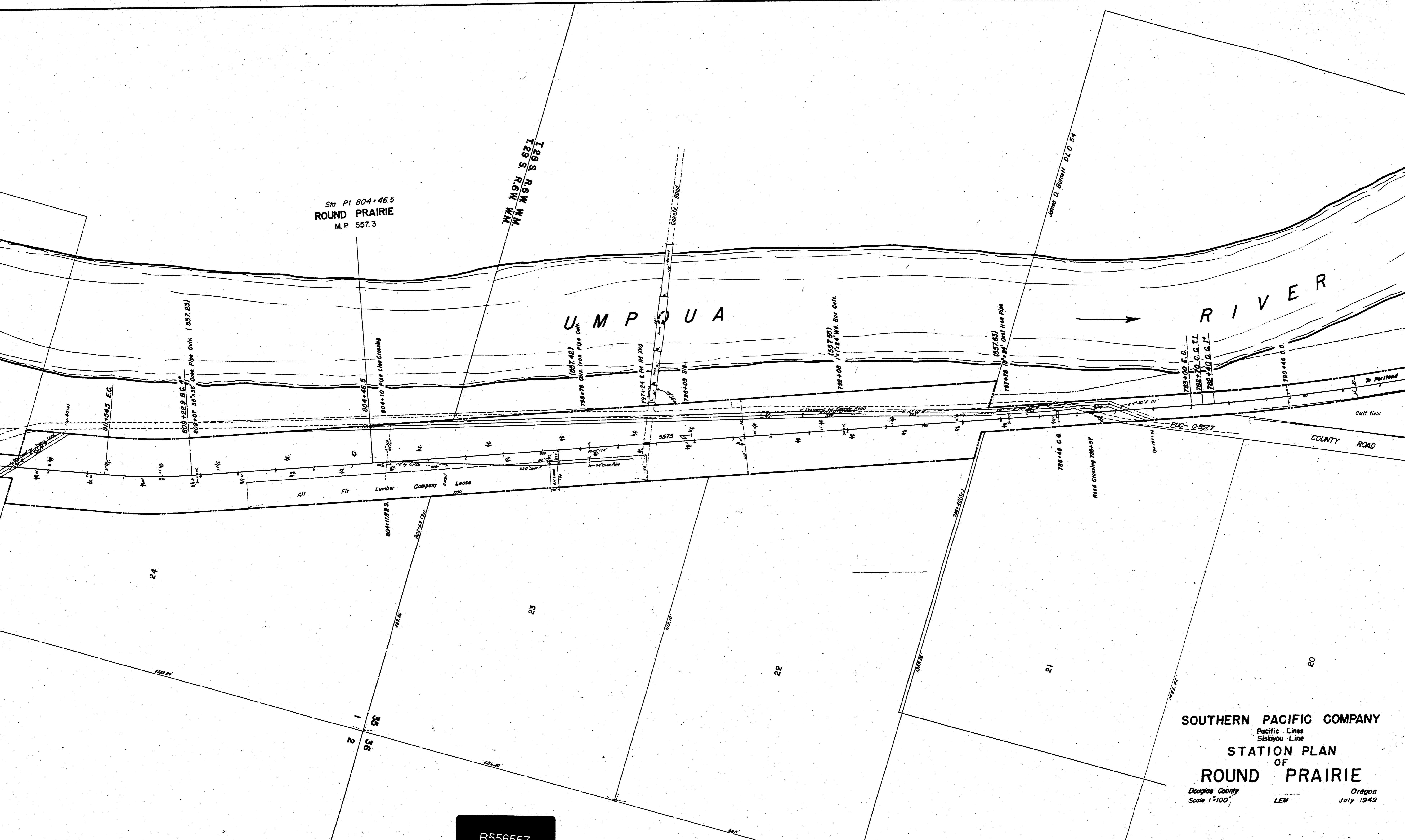
R556557

Sta. Pt. 804+46.5
ROUND PRAIRIE
M.P. 557.3

128 S. R.G.W. W.M.
729 S. R.G.W. W.M.

UMPOUA

RIVER



SOUTHERN PACIFIC COMPANY
Pacific Lines
Siskiyou Line
STATION PLAN
OF
ROUND PRAIRIE
Douglas County Oregon
Scale 1"=100' LEM July 1949

R556557