

# LAND PARTITION

LOCATED in the NE 1/4 of Section 32, T. 29 S., R. 3 W, W.M. in Douglas County, Oregon.

June, 2025

29 RECORD 1/4 CORNER

32 [ N 89°26'14" W 2629.37' ]

29 28  
32 33

**SURVEYED FOR:** C.H. SHELDON  
P.O. BOX 5001  
LINDSAY, CA. 93247

**SURVEYED BY:** DAVID EDWARDS LAND SURVEYING  
P.O. BOX 361  
OAKLAND, OREGON 97462  
PHONE: (541) 459-0512

REGISTERED  
PROFESSIONAL  
LAND SURVEYOR  
*David A. Edwards*  
OREGON  
JULY 26, 1988  
DAVID A. EDWARDS  
2339  
RENEWS 12/31/25

INITIAL POINT, SECTION CORNER.  
A 28" DIAM. FIR W/H.B. BEARS N 40 1/4° E, 68.0'  
A 35" DIAM. CEDAR W/H.B. BEARS S 29 3/4° E, 27.7'  
A BROKEN, ROTTED FIR STUMP  
BEARS N 82 1/4° W, 41.9'  
A 5.5' STEEL POST IS SET 2' SOUTH ON LINE.  
A 5.5' STEEL POST IS SET 2' WEST ON LINE.

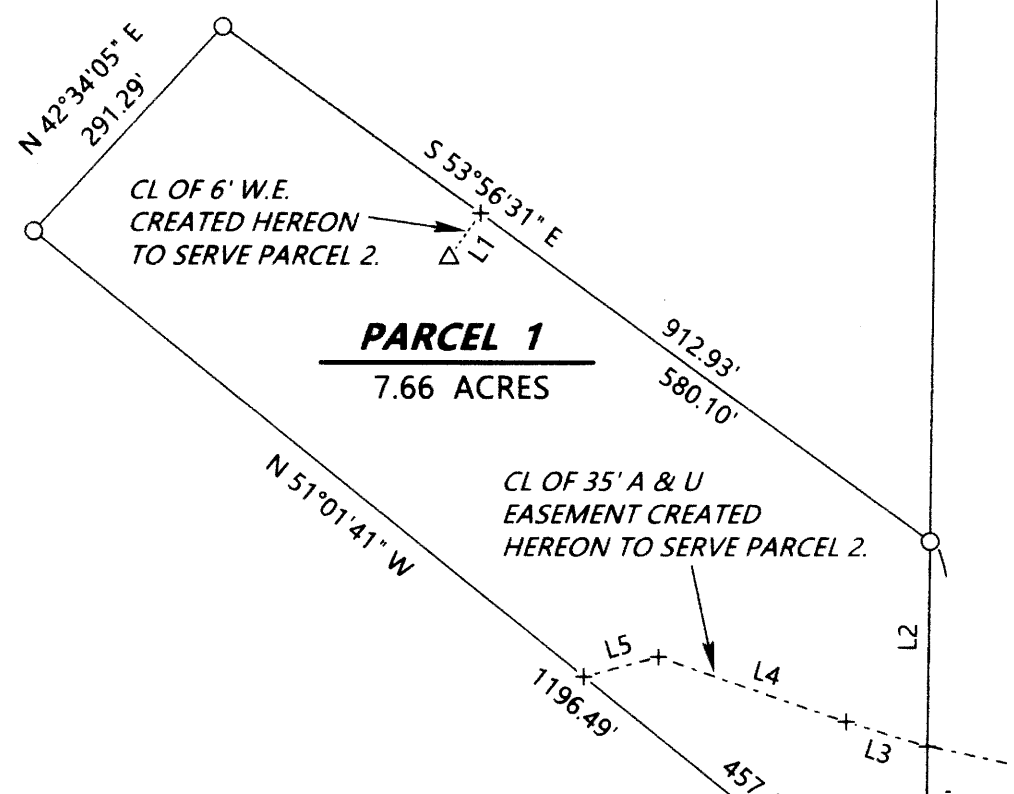
### LEGEND

- ⊙ INDICATES D.C.S.O. OR B.L.M. BRASS CAP FOUND.
- + INDICATES A COMPUTED POINT.
- INDICATES 5/8" X 30" STEEL REBAR W/RED PLASTIC CAP MKD. "D.A. EDWARDS-L.S. 2339" SET.
- [ ] DENOTES RECORD DATA PER M 65-42.
- ( ) DENOTES RECORD DATA PER 1969 B.L.M. RESURVEY.
- △ = SHARED WELL
- A & U = ACCESS AND UTILITY.
- SCALE: 1" = 200'
- W.E. = WATERLINE EASEMENT
- BASIS OF BEARINGS: M 65-42 AS SHOWN.

[ S 0°27'40" W 2677.58' ]

UNSURVEYED

**PARCEL 2**  
152.34 +/- ACRES



### LINE TABLE

LINE	BEARING	DISTANCE
L1	N 36°04'00" E	55.31'
L2	N 0°38'56" E	214.85'
L3	N 73°07'24" W	88.49'
L4	N 70°56'40" W	206.96'
L5	S 75°18'43" W	80.43'

2653.11'  
[ 2651.69' ]  
40.22 CHS. )

N 0°38'56" E  
BASE BEARING  
( N 0°37' E )

**NOTE:** LEGAL ACCESS TO THE PARENT TRACT IS VIA A 35' WIDE ROADWAY EASEMENT TO DAYS CREEK COUNTY ROAD NO. 34 PER DOCUMENT NO. 98-02479.

**NOTE:** THE ACREAGE OF PARCEL 2 IS BASED UPON COUNTY ASSESSOR DATA.

1/4 CORNER  
A 25" DIAM. FIR W/H.B. BEARS N 25 1/4° E, 37.0'  
A 25" DIAM. FIR W/H.B. BEARS N 11 1/4° W, 49.2'  
A 5.5' STEEL POST IS SET 2' NORTH ON LINE.  
A 5.5' STEEL POST IS SET 2' WEST ON LINE.

RECORD CENTER 1/4 CORNER

[ S 89°59'50" W 2620.76' ]

32 33