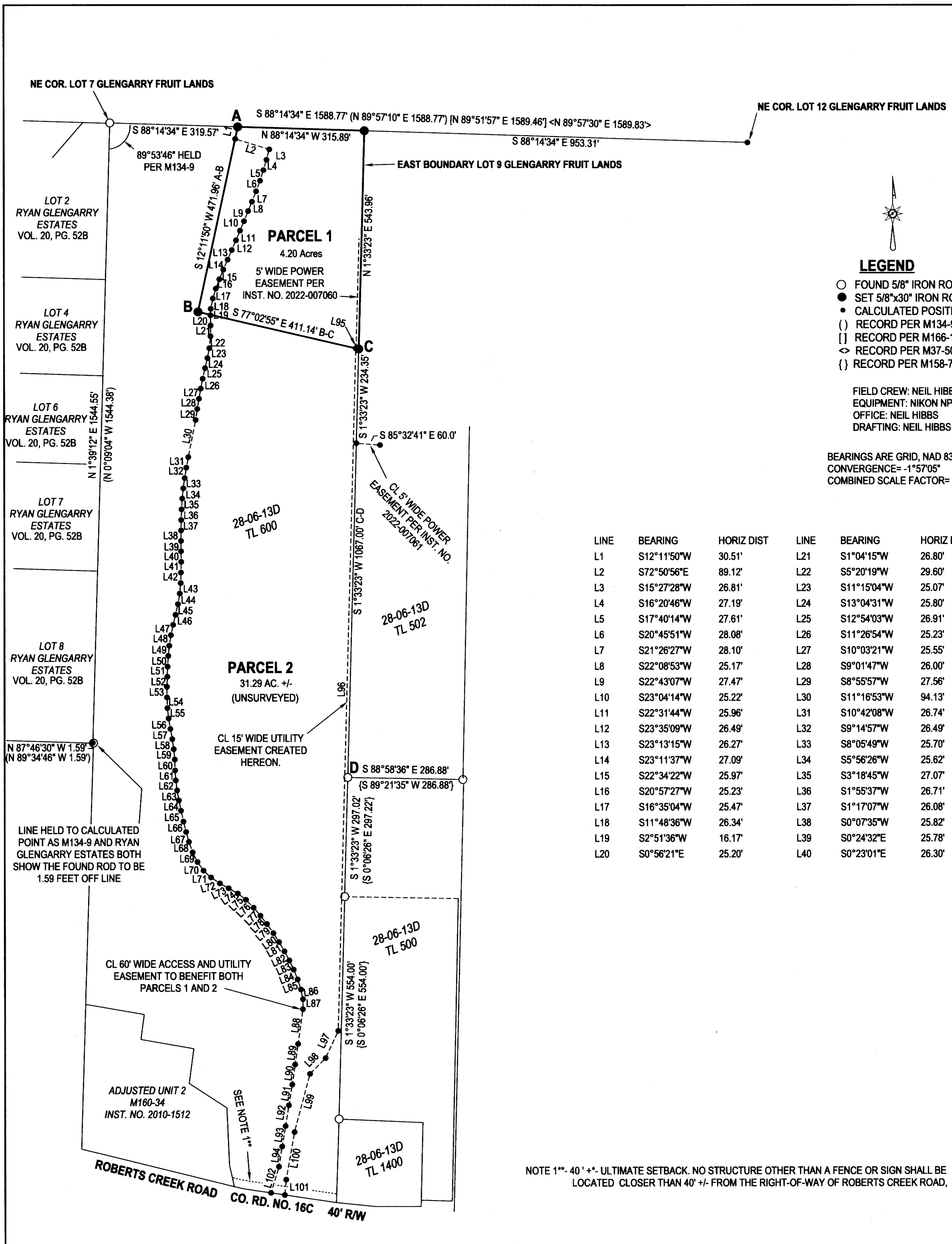


2022-0020 A



**LEGEND**

- FOUND 5/8" IRON ROD UNLESS OTHERWISE NOTED
- SET 5/8"x30" IRON ROD w/CAP STAMPED "HIBBS-LS 52989"
- CALCULATED POSITION
- () RECORD PER M134-9
- [] RECORD PER M166-12
- <> RECORD PER M37-50
- { } RECORD PER M158-77

FIELD CREW: NEIL HIBBS, KADIN BAKER  
 EQUIPMENT: NIKON NPL-322+2" TOTAL STATION  
 OFFICE: NEIL HIBBS  
 DRAFTING: NEIL HIBBS

BEARINGS ARE GRID, NAD 83 (CONUS), OREGON SOUTH ZONE. DISTANCES CONVERTED TO GROUND  
 CONVERGENCE = -1°57'05"  
 COMBINED SCALE FACTOR = 0.9999967530

LINE	BEARING	HORIZ DIST	LINE	BEARING	HORIZ DIST	LINE	BEARING	HORIZ DIST	LINE	BEARING	HORIZ DIST	LINE	BEARING	HORIZ DIST
L1	S12°11'50"W	30.51'	L21	S1°04'15"W	26.80'	L41	S0°49'33"W	26.71'	L61	S3°56'59"E	25.29'	L81	S29°57'16"E	26.53'
L2	S72°50'56"E	89.12'	L22	S5°20'19"W	29.60'	L42	S1°54'46"W	26.19'	L62	S7°18'52"E	25.02'	L82	S28°23'07"E	25.98'
L3	S15°27'28"W	26.81'	L23	S11°15'04"W	25.07'	L43	S5°04'59"W	26.15'	L63	S10°00'57"E	25.51'	L83	S25°18'27"E	25.10'
L4	S16°20'46"W	27.19'	L24	S13°04'31"W	25.80'	L44	S10°08'10"W	26.90'	L64	S11°56'11"E	26.15'	L84	S22°07'49"E	25.97'
L5	S17°40'14"W	27.61'	L25	S12°54'03"W	26.91'	L45	S12°43'51"W	27.09'	L65	S12°38'32"E	27.66'	L85	S17°43'16"E	26.21'
L6	S20°45'51"W	28.08'	L26	S11°26'54"W	25.23'	L46	S13°08'16"W	25.72'	L66	S14°10'03"E	26.80'	L86	S11°45'53"E	25.10'
L7	S21°26'27"W	28.10'	L27	S10°03'21"W	25.55'	L47	S12°22'23"W	26.49'	L67	S15°21'30"E	25.68'	L87	S0°14'08"W	25.04'
L8	S22°08'53"W	25.17'	L28	S9°01'47"W	26.00'	L48	S8°39'43"W	26.57'	L68	S20°03'49"E	27.75'	L88	S8°02'18"W	87.38'
L9	S22°43'07"W	27.47'	L29	S8°55'57"W	27.56'	L49	S6°15'46"W	25.05'	L69	S26°47'48"E	26.67'	L89	S8°06'59"W	51.40'
L10	S23°04'14"W	25.22'	L30	S11°16'53"W	94.13'	L50	S3°54'49"W	26.64'	L70	S35°02'00"E	25.93'	L90	S8°21'56"W	50.50'
L11	S22°31'44"W	25.96'	L31	S10°42'08"W	26.74'	L51	S1°09'26"W	25.25'	L71	S47°06'23"E	25.37'	L91	S9°11'15"W	52.47'
L12	S23°35'09"W	26.49'	L32	S9°14'57"W	26.49'	L52	S1°57'56"W	25.37'	L72	S56°21'29"E	26.47'	L92	S9°19'52"W	52.54'
L13	S23°13'15"W	26.27'	L33	S8°05'49"W	25.70'	L53	S0°14'44"W	26.38'	L73	S61°01'00"E	25.30'	L93	S9°31'12"W	51.68'
L14	S23°11'37"W	27.09'	L34	S5°56'26"W	25.62'	L54	S2°19'45"E	26.62'	L74	S60°15'33"E	25.97'	L94	S9°07'22"W	50.51'
L15	S22°34'22"W	25.97'	L35	S3°18'45"W	27.07'	L55	S6°16'51"E	25.79'	L75	S52°06'24"E	25.75'	L95	N77°02'55"W	7.65'
L16	S20°57'27"W	25.23'	L36	S1°55'37"W	26.71'	L56	S9°53'07"E	26.50'	L76	S44°28'54"E	27.27'	L96	S1°33'23"W	1700.00'
L17	S16°35'04"W	25.47'	L37	S1°17'07"W	26.08'	L57	S9°51'48"E	25.80'	L77	S40°11'00"E	26.38'	L97	S25°00'00"W	75.00'
L18	S11°48'36"W	26.34'	L38	S0°07'35"W	25.82'	L58	S8°53'42"E	25.24'	L78	S38°36'50"E	26.31'	L98	S45°00'00"W	55.00'
L19	S2°51'36"W	16.17'	L39	S0°24'32"E	25.78'	L59	S5°25'41"E	25.83'	L79	S34°44'41"E	27.57'	L99	S15°00'00"W	150.00'
L20	S0°56'21"E	25.20'	L40	S0°23'01"E	26.30'	L60	S1°35'16"E	27.03'	L80	S32°37'05"E	26.57'	L100	S10°00'00"W	120.00'
												L101	S5°24'22"W	38' +/-
												L102	S17°03'42"W	68' +/-

NOTE 1"- 40' +/- ULTIMATE SETBACK. NO STRUCTURE OTHER THAN A FENCE OR SIGN SHALL BE LOCATED CLOSER THAN 40' +/- FROM THE RIGHT-OF-WAY OF ROBERTS CREEK ROAD,

PLANNING DEPT. FILE NO. 21-091

<b>LAND PARTITION</b> LYING IN THE SE 1/4 OF SEC. 13 & THE NE 1/4 SEC. 24, TOWNSHIP 28 SOUTH, RANGE 6 WEST WILLAMETTE MERIDIAN, DOUGLAS COUNTY, OREGON		REGISTERED PROFESSIONAL LAND SURVEYOR   OREGON JANUARY 12, 1989 F. NEIL HIBBS 52989 EXPIRATION DATE 6/30/2023	
CLIENT: LARRY AND KAY EDMONSON 2454 ROBERTS CREEK ROAD ROSEBURG, OR. 97470	SURVEYOR: <b>NEIL HIBBS</b> LAND SURVEYING, INC 4788 LOOKMOLAS RD. ROSEBURG, OR. 97471 phone: 541-957-4303 fax: 541-957-4306 e-mail: neil@hibbsland.com		
DWG SCALE: 1"= 200'	JOB NO.: 2739-01	DATE: APRIL 2022	PAGE 1 OF 2

2022-0020 A