

2020-0040 B

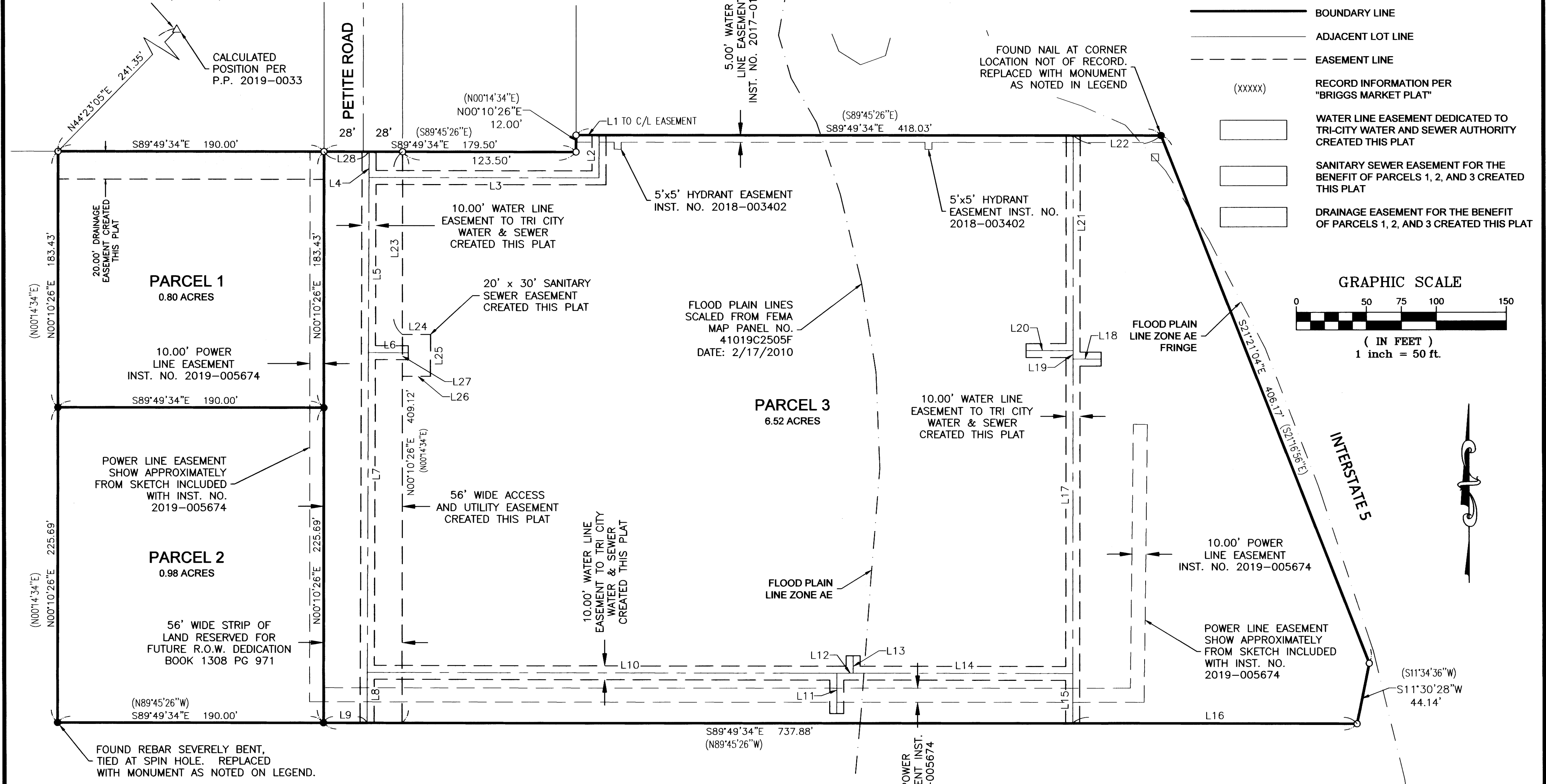
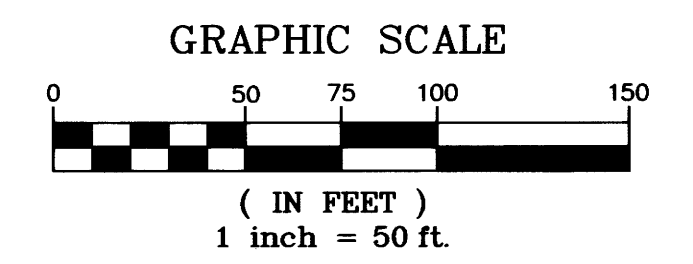
COUNTY BENCHMARK P-130
 1-3/8" DIA x 5-1/2" BOLT
 STUD, STAMPED "PRUNE-3"
 "2012" BEING THE MOST NW'LY
 BOLT OF THE McDONALD'S
 GOLDEN ARCHES SIGN POLE BASE
 ELEVATION = 636.72 (NGVD 29)

PARTITION PLAT

BEING A REPLAT OF LOT 4 "BRIGGS MARKET PLAT"
 SITUATED IN THE SW1/4 OF SECTION 07, T30S, R05W, W.M.
 DOUGLAS COUNTY, OREGON

LEGEND:

- FOUND MONUMENT PER "BRIGGS MARKET PLAT" - FINAL SUBDIVISION PLAT
- SET 5/8"x30" REBAR WITH YELLOW PLASTIC CAP MARKED "RHINE-CROSS GROUP, LLC"
- BOUNDARY LINE
- - - ADJACENT LOT LINE
- - - EASEMENT LINE
- (XXXX) RECORD INFORMATION PER "BRIGGS MARKET PLAT"
- [] WATER LINE EASEMENT DEDICATED TO TRI-CITY WATER AND SEWER AUTHORITY CREATED THIS PLAT
- [] SANITARY SEWER EASEMENT FOR THE BENEFIT OF PARCELS 1, 2, AND 3 CREATED THIS PLAT
- [] DRAINAGE EASEMENT FOR THE BENEFIT OF PARCELS 1, 2, AND 3 CREATED THIS PLAT



2020-0040 B

Easement Line Table

Line #	Length	Direction
L1	16.40	S89° 49' 34"E
L2	30.56	N0° 10' 27"E
L3	163.81	S89° 49' 34"E
L4	18.56	S0° 19' 30"W
L5	125.35	S0° 19' 30"W
L6	28.41	S89° 40' 30"E
L7	229.04	S0° 19' 30"W
L8	36.17	S0° 19' 30"W

Easement Line Table

Line #	Length	Direction
L9	31.06	S89° 49' 34"E
L10	335.03	S89° 46' 12"E
L11	28.82	S0° 13' 48"W
L12	11.67	S89° 46' 12"E
L13	12.50	S0° 13' 48"W
L14	156.89	S89° 46' 12"E
L15	35.68	N0° 10' 27"E
L16	203.12	S89° 49' 34"E

Easement Line Table

Line #	Length	Direction
L17	225.30	N0° 10' 27"E
L18	20.16	S89° 49' 33"E
L19	6.07	N0° 10' 27"E
L20	33.53	S89° 49' 33"E
L21	154.07	N0° 10' 27"E
L22	62.77	S89° 49' 34"E
L23	130.87	S0° 10' 26"W
L24	20.00	S89° 49' 34"E

Easement Line Table

Line #	Length	Direction
L25	30.00	N0° 10' 26"E
L26	20.00	S89° 49' 34"E
L27	30.00	S0° 10' 26"W
L28	32.14	S89° 49' 34"E

REGISTERED
 PROFESSIONAL
 LAND SURVEYOR

Marcus D. Cross

OREGON
 JULY 6, 2010
 MARCUS D. CROSS
 55506PLS

RENEWS: 12-31-2021

SURVEY FOR: DICKERHOOF PROPERTIES
 PO BOX 1583
 CORVALLIS, OR 97339

DATE: JULY 8, 2020 PROJECT NO. 1800

R-C GROUP **RHINE-CROSS GROUP LLC**
 ENGINEERING - SURVEYING - PLANNING
 112 N. 5TH ST, SUITE 200 - P.O. BOX 909
 KLAMATH FALLS, OREGON 97601

Phone: (541) 851-9405 Fax: (541) 273-9200 admin@rc-grp.com