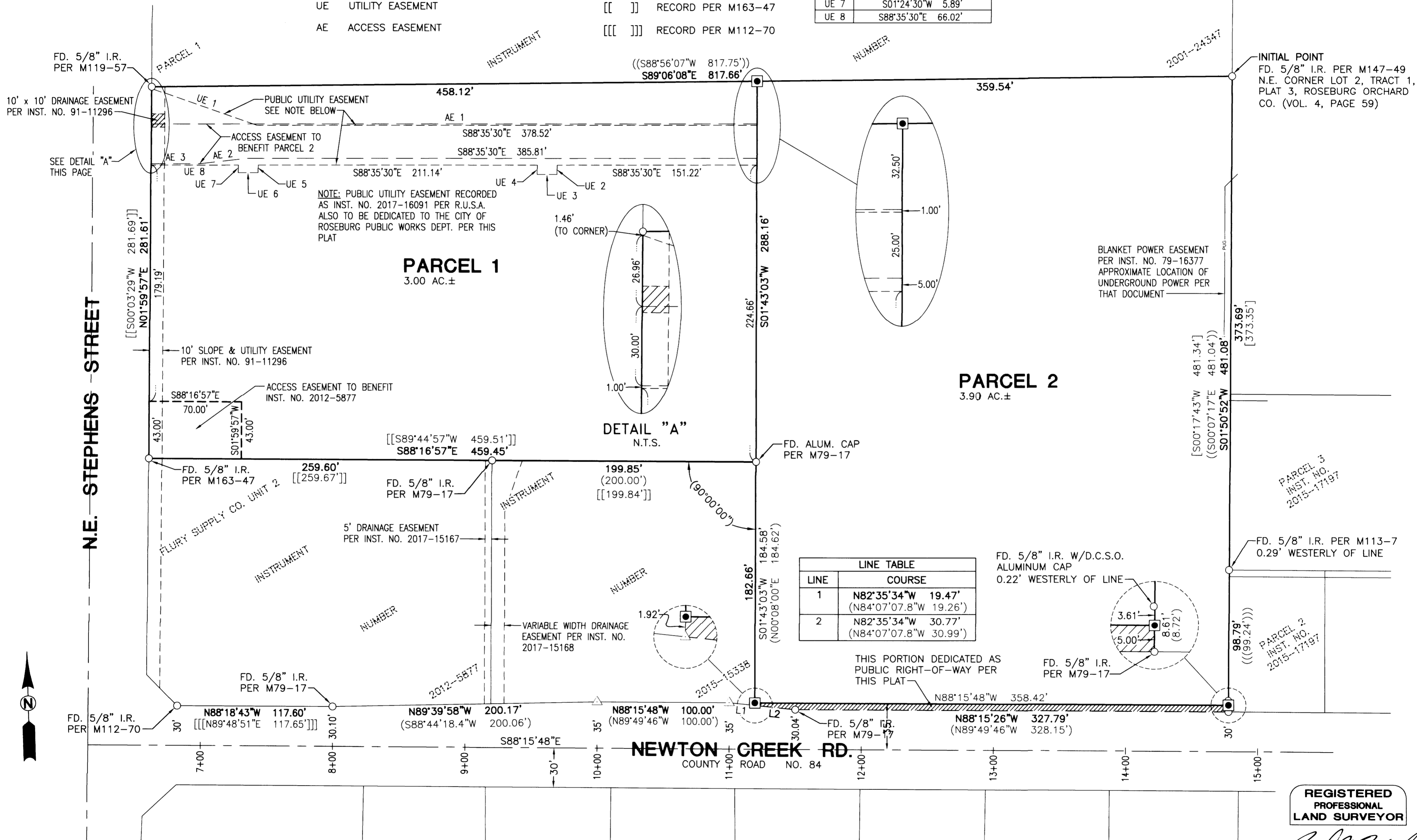


**LEGEND**

- FOUND MONUMENT AS NOTED ( ) RECORD PER M79-17
- ◼ SET 5/8" x 30" IRON ROD w/YELLOW PLASTIC CAP STAMPED "IE ENGINEERING" (( )) RECORD PER M147-49
- △ CALCULATED POINT ONLY NO MONUMENT FOUND OR SET ((( ))) RECORD PER M113-7
- UE UTILITY EASEMENT [ ] RECORD PER M84-13
- AE ACCESS EASEMENT [[ ]] RECORD PER M163-47
- [[[ ]]] RECORD PER M112-70

LINE	COURSE
UE 1	S69°11'40"E 84.20'
UE 2	N01°24'30"E 7.20'
UE 3	S88°35'30"E 15.00'
UE 4	S01°24'30"W 7.20'
UE 5	N01°24'30"E 5.89'
UE 6	S88°35'30"E 15.00'
UE 7	S01°24'30"W 5.89'
UE 8	S88°35'30"E 66.02'

LINE	COURSE
AE 1	S88°35'30"E 458.74'
AE 2	S85°04'06"W 36.22'
AE 3	N88°35'30"W 36.79'

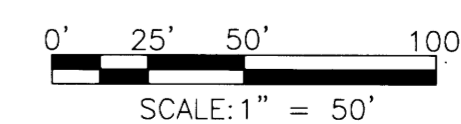


**DETAIL "A"**  
N.T.S.

LINE	COURSE
1	N82°35'34"W 19.47' (N84°07'07.8"W 19.26')
2	N82°35'34"W 30.77' (N84°07'07.8"W 30.99')

**REGISTERED PROFESSIONAL LAND SURVEYOR**

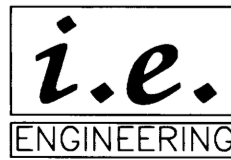
*Ronald A. Gumbay*  
**OREGON**  
 JULY 14, 1978  
**RONALD A. GUMBAY**  
 1854



EXPIRES: 12/31/18

2017-0026 A

2017-0026 A



809 SE Pine Street  
 Roseburg, Oregon 97470  
 PHONE (541) 673-0166  
 FAX (541) 440-9392  
 iemail@ieengineering.com

**SURVEYED FOR:**  
 UMPQUA HEALTH  
 500 S.E. CASS AVE., SUITE 101  
 ROSEBURG, OR 97470

PAGE: 1 OF 2  
 JOB NO: 2755-01 T4  
 DATE: OCT., 2017

**LAND PARTITION**  
 LYING IN THE SOUTHEAST QUARTER OF SECTION 1, TOWNSHIP 27 SOUTH,  
 RANGE 6 WEST, WILLAMETTE MERIDIAN, DOUGLAS COUNTY, OREGON