

2015-0003 A

LAND PARTITION PLAT

IN THE NW 1/4, SECTION 3, TOWNSHIP 25 SOUTH, RANGE 5 WEST
OF THE WILLAMETTE MERIDIAN
DOUGLAS COUNTY, OREGON
PLANNING FILE NO. 14-047 - 31 JANUARY 2015

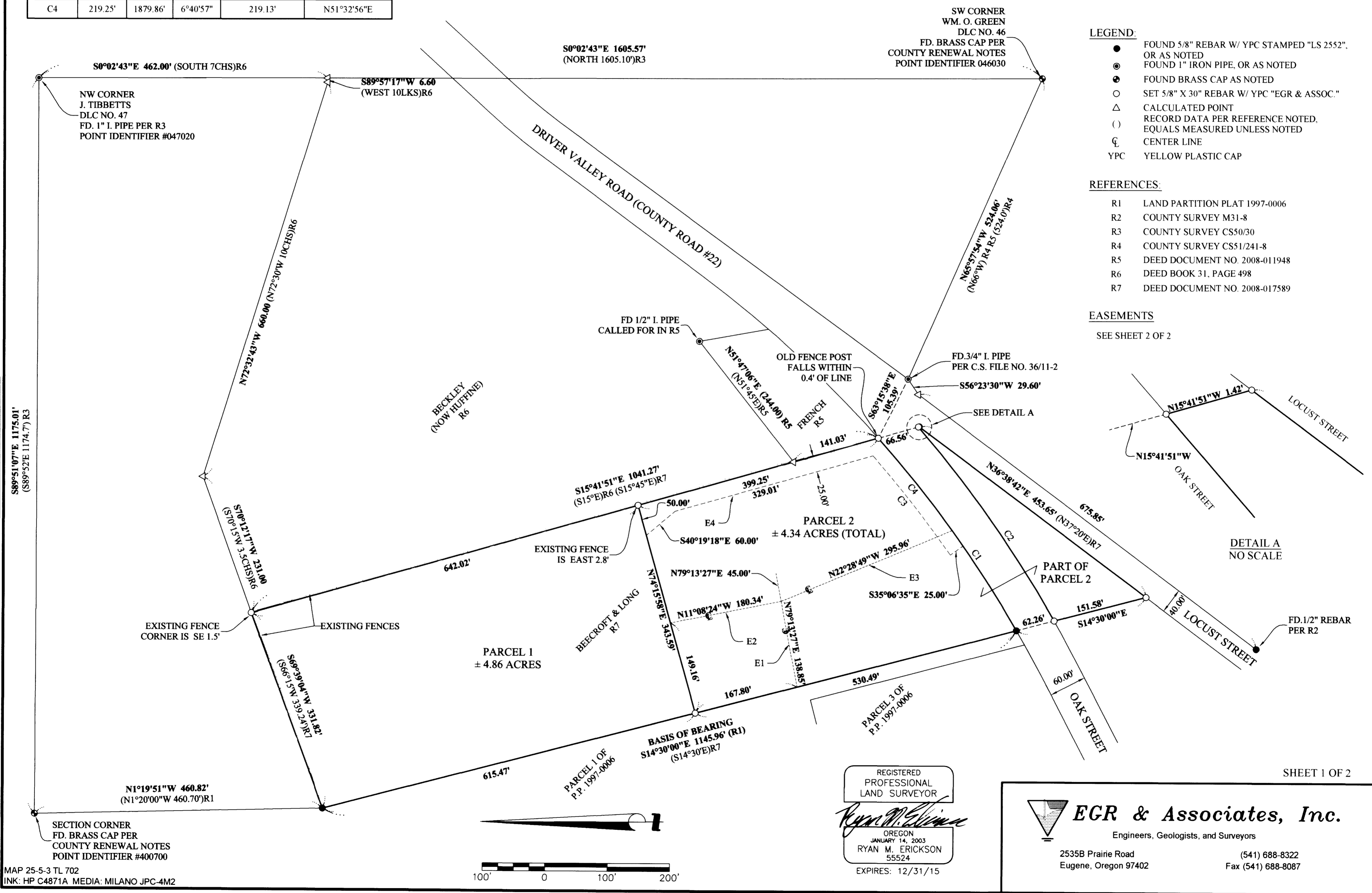
Douglas County Official Records
Patricia K. Hitt, County Clerk
2015-003249
00386052201500032490020020
NO FEE
02/20/2015 09:34:11 AM
PLAT-PAR Cnt=1 Stn=12 HEDI
This is a no fee document

CURVE TABLE					
CURVE #	LENGTH	RADIUS	DELTA	CHORD LENGTH	CHORD BEARING
C1	378.86'	1879.86'	11°32'50"	378.22'	N53°58'53"E
C2	378.57'	1939.86'	11°10'53"	377.97'	S54°39'47"W
C3	200.78'	1854.86'	6°12'07"	200.68'	S51°47'22"W
C4	219.25'	1879.86'	6°40'57"	219.13'	N51°32'56"E

- LEGEND:**
- FOUND 5/8" REBAR W/ YPC STAMPED "LS 2552", OR AS NOTED
 - ⊙ FOUND 1" IRON PIPE, OR AS NOTED
 - ⊙ FOUND BRASS CAP AS NOTED
 - SET 5/8" X 30" REBAR W/ YPC "EGR & ASSOC."
 - △ CALCULATED POINT
 - () RECORD DATA PER REFERENCE NOTED, EQUALS MEASURED UNLESS NOTED
 - ⊕ CENTER LINE
 - YPC YELLOW PLASTIC CAP

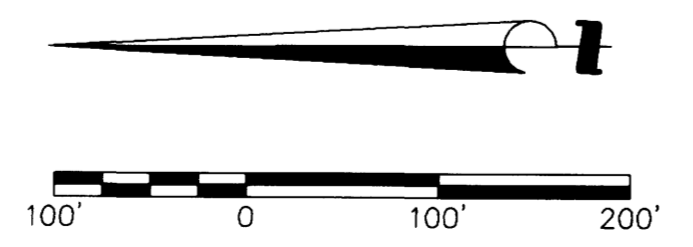
- REFERENCES:**
- R1 LAND PARTITION PLAT 1997-0006
 - R2 COUNTY SURVEY M31-8
 - R3 COUNTY SURVEY CS50/30
 - R4 COUNTY SURVEY CS51/241-8
 - R5 DEED DOCUMENT NO. 2008-011948
 - R6 DEED BOOK 31, PAGE 498
 - R7 DEED DOCUMENT NO. 2008-017589

EASEMENTS
SEE SHEET 2 OF 2



2015-C 003 A

S:\Projects\6485 Baccroft\14-0114 Oakland Partition\Partition.dwg LAYOUT=Partition
Main File
MAP 25-5-3 TL 702
INK: HP C4871A MEDIA: MILANO JPC-4M2



REGISTERED
PROFESSIONAL
LAND SURVEYOR

Ryan M. Erickson

OREGON
JANUARY 14, 2003
RYAN M. ERICKSON
55524
EXPIRES: 12/31/15

EGR & Associates, Inc.
Engineers, Geologists, and Surveyors

2535B Prairie Road
Eugene, Oregon 97402

(541) 688-8322
Fax (541) 688-8087

SHEET 1 OF 2