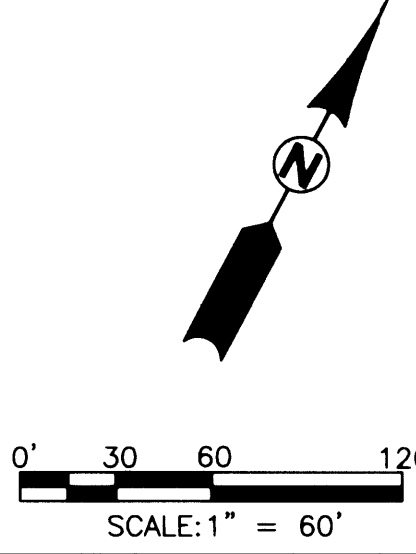
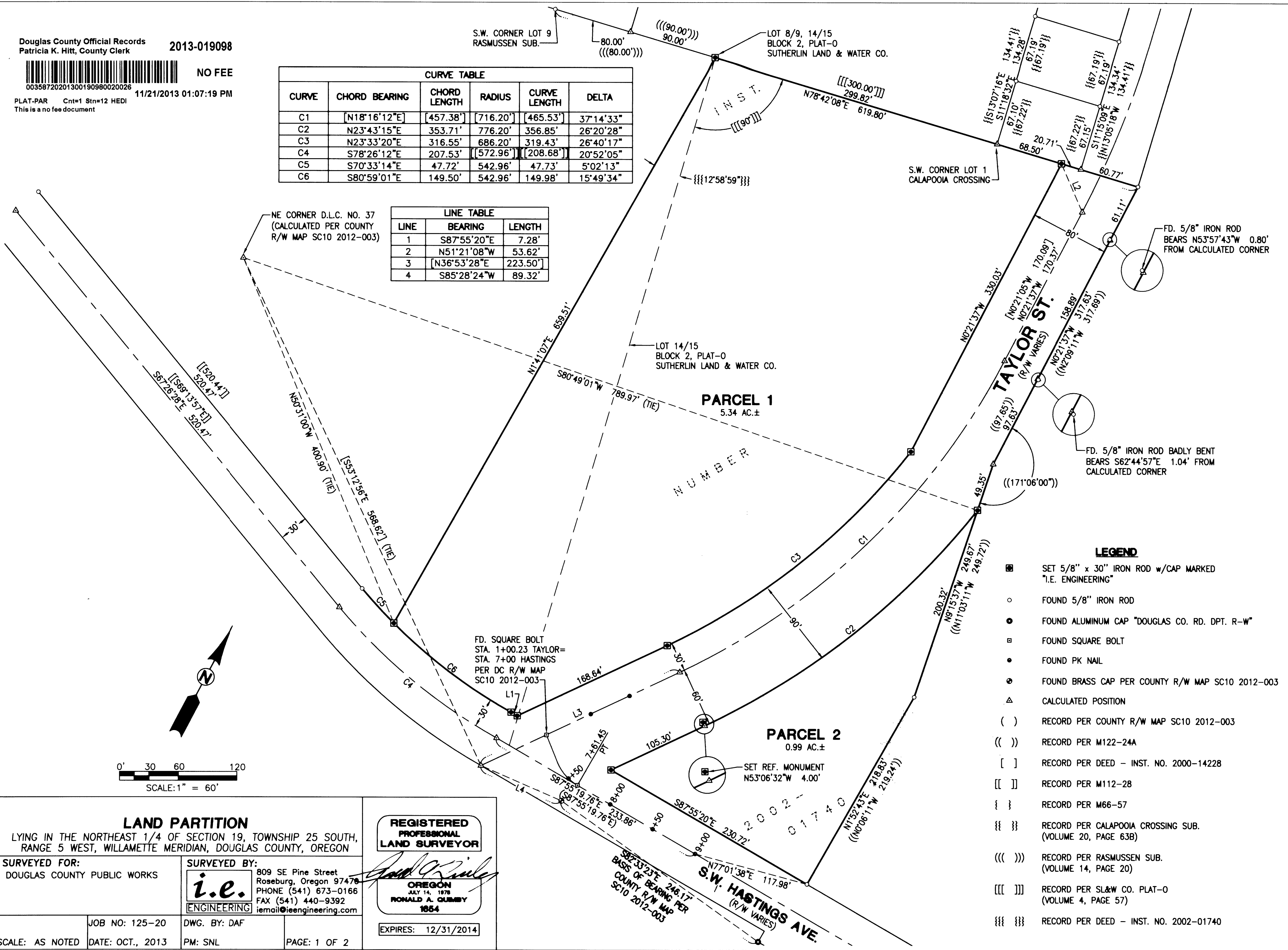


NO FEE  
 00358720201300190980020026  
 11/21/2013 01:07:19 PM  
 PLAT-PAR Cnt=1 Stn=12 HEDI  
 This is a no fee document

CURVE TABLE					
CURVE	CHORD BEARING	CHORD LENGTH	RADIUS	CURVE LENGTH	DELTA
C1	N18°16'12"E	457.38'	716.20'	465.53'	37°14'33"
C2	N23°43'15"E	353.71'	776.20'	356.85'	26°20'28"
C3	N23°33'20"E	316.55'	686.20'	319.43'	26°40'17"
C4	S78°26'12"E	207.53'	572.96'	208.68'	20°52'05"
C5	S70°33'14"E	47.72'	542.96'	47.73'	5°02'13"
C6	S80°59'01"E	149.50'	542.96'	149.98'	15°49'34"

LINE TABLE		
LINE	BEARING	LENGTH
1	S87°55'20"E	7.28'
2	N51°21'08"W	53.62'
3	N36°53'28"E	223.50'
4	S85°28'24"W	89.32'

NE CORNER D.L.C. NO. 37  
 (CALCULATED PER COUNTY  
 R/W MAP SC10 2012-003)



- LEGEND**
- SET 5/8" x 30" IRON ROD w/CAP MARKED "I.E. ENGINEERING"
  - FOUND 5/8" IRON ROD
  - FOUND ALUMINUM CAP "DOUGLAS CO. RD. DPT. R-W"
  - FOUND SQUARE BOLT
  - FOUND PK NAIL
  - FOUND BRASS CAP PER COUNTY R/W MAP SC10 2012-003
  - △ CALCULATED POSITION
  - ( ) RECORD PER COUNTY R/W MAP SC10 2012-003
  - (( )) RECORD PER M122-24A
  - [ ] RECORD PER DEED - INST. NO. 2000-14228
  - [[ ]] RECORD PER M112-28
  - { } RECORD PER M66-57
  - {} RECORD PER CALAPOOIA CROSSING SUB. (VOLUME 20, PAGE 63B)
  - (( ( )) RECORD PER RASMUSSEN SUB. (VOLUME 14, PAGE 20)
  - [[ [ ] RECORD PER SL&W CO. PLAT-0 (VOLUME 4, PAGE 57)
  - {} {} RECORD PER DEED - INST. NO. 2002-01740

2013-0028 A

2013-0028 A

**LAND PARTITION**  
 LYING IN THE NORTHEAST 1/4 OF SECTION 19, TOWNSHIP 25 SOUTH,  
 RANGE 5 WEST, WILLAMETTE MERIDIAN, DOUGLAS COUNTY, OREGON

SURVEYED FOR:  
 DOUGLAS COUNTY PUBLIC WORKS

SURVEYED BY:  
 809 SE Pine Street  
 Roseburg, Oregon 97478  
 PHONE (541) 673-0166  
 FAX (541) 440-9392  
 iemail@ieengineering.com

JOB NO: 125-20  
 DATE: OCT., 2013  
 DWG. BY: DAF  
 PM: SNL  
 PAGE: 1 OF 2

**REGISTERED PROFESSIONAL LAND SURVEYOR**

*Ronald A. Gurney*

**OREGON**  
 JULY 14, 1978  
**RONALD A. GURNEY**  
 1864

EXPIRES: 12/31/2014

2002-01740  
 S.W. HASTINGS AVE.  
 (R/W VARIES)

2002-01740  
 COUNTY R/W MAP  
 SC10 2012-003