

2013-0003 A

2013-0003 A

LEGEND

- FOUND 5/8" IRON ROD
- FOUND BRASS CAP AS NOTED
- △ CALCULATED POINT
- () RECORD PER M157-56

- ① CENTERLINE OF 60' ACCESS AND UTILITY EASEMENT PER PP 2010-0025
- ② CENTERLINE OF 25' EMERGENCY ACCESS EASEMENT PER PP 2010-0025
- ③ CENTERLINE OF 60' ACCESS AND UTILITY EASEMENT PER PP 2010-0025

LINE	BEARING	LENGTH
1	N23°51'26"W	373.78'
2	S66°08'34"W	20.00'
3	S23°51'26"E	362.55'
4	N56°51'56"E	40.24'
5	N84°43'24"W	236.64'
6	S8°01'39"E	25.77'

Douglas County Official Records
Patricia K. Hitt, County Clerk

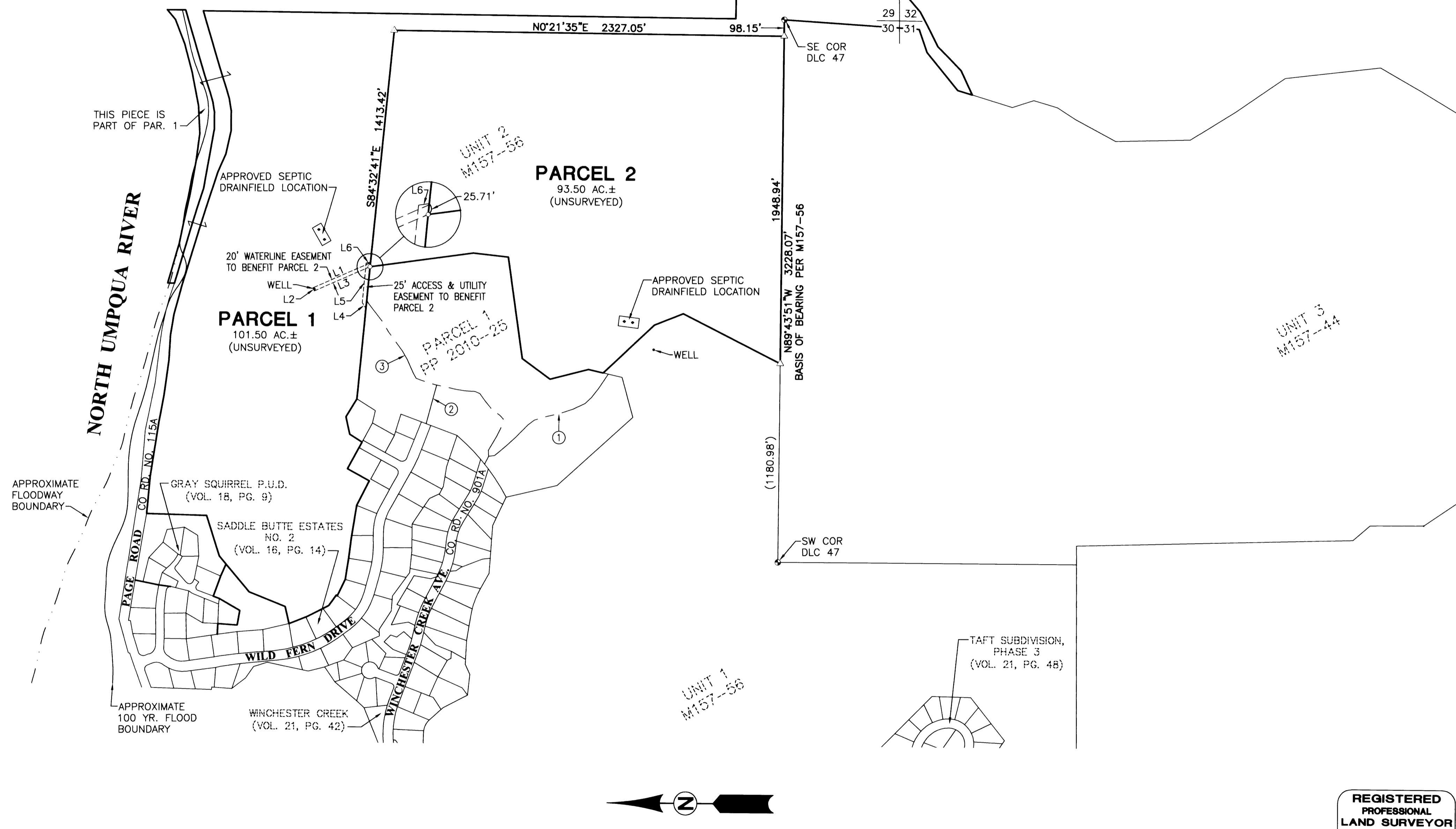
2013-004278



NO FEE

00340427201300042780020025
PLAT-PAR Cnt=1 Stn=12 HED1
This is a no fee document

02/27/2013 11:33:15 AM



UNIT 3
M157-44

UNIT 1
M157-56

**REGISTERED
PROFESSIONAL
LAND SURVEYOR**

PLANNING DEPARTMENT FILE NO. 12-M056

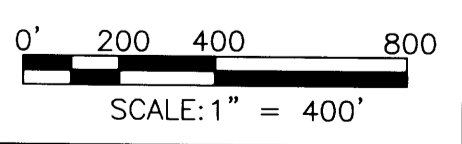
Ronald A. Gumbly
OREGON
JULY 14, 1978
RONALD A. GUMBLY
1854

EXPIRES: 12/31/2014

SURVEYED BY:
i.e.
ENGINEERING
809 SE Pine Street
Roseburg, Oregon 97470
PHONE (541) 673-0166
FAX (541) 440-9392
iemail@ieengineering.com

SURVEYED FOR:
YELLOW PINE L.L.C.
P.O. BOX 387
OREGON CITY, OR 97045

DWG. BY: DAF
PM: AMP
SCALE: AS NOTED
PAGE: 1 OF 2
JOB NO: 1968-29
DATE: JAN., 2013



LAND PARTITION
LYING IN SEC. 30, THE SW 1/4 OF SEC. 29 AND THE NW 1/4 OF SEC. 32, T26S, R5W, WILLAMETTE MERIDIAN, DOUGLAS COUNTY, OREGON