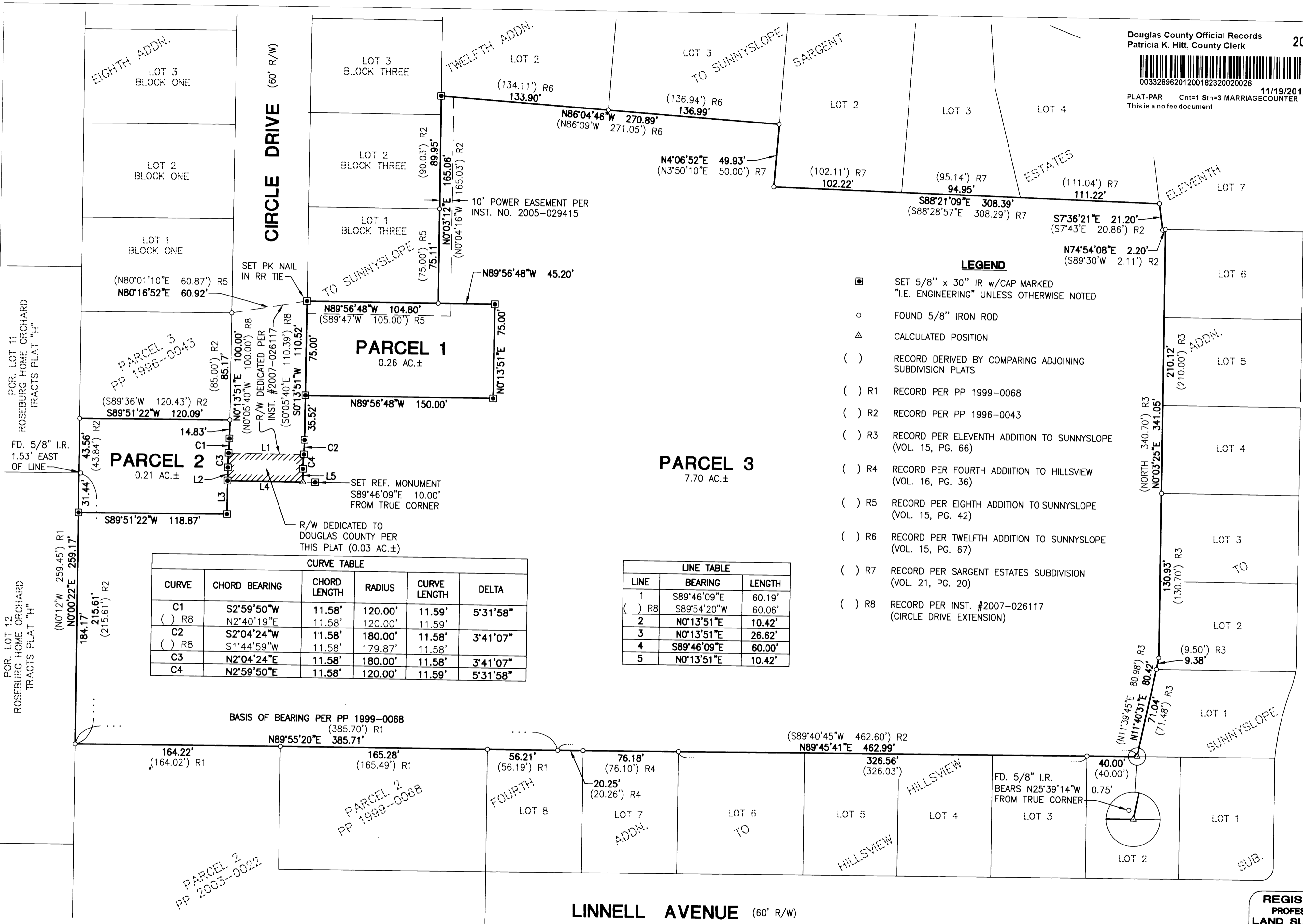


2012-0018 A

2012-0018 A

Douglas County Official Records
 Patricia K. Hitt, County Clerk
 2012-018232
 NO FEE
 00332896201200182320020026
 11/19/2012 9:30:27 AM
 PLAT-PAR Cnt=1 Stn=3 MARRIAGECOUNTER
 This is a no fee document



- LEGEND**
- SET 5/8" x 30" IR w/CAP MARKED
"I.E. ENGINEERING" UNLESS OTHERWISE NOTED
 - FOUND 5/8" IRON ROD
 - △ CALCULATED POSITION
 - () RECORD DERIVED BY COMPARING ADJOINING
SUBDIVISION PLATS
 - () R1 RECORD PER PP 1999-0068
 - () R2 RECORD PER PP 1996-0043
 - () R3 RECORD PER ELEVENTH ADDITION TO SUNNYSLOPE
(VOL. 15, PG. 66)
 - () R4 RECORD PER FOURTH ADDITION TO HILLSVIEW
(VOL. 16, PG. 36)
 - () R5 RECORD PER EIGHTH ADDITION TO SUNNYSLOPE
(VOL. 15, PG. 42)
 - () R6 RECORD PER TWELFTH ADDITION TO SUNNYSLOPE
(VOL. 15, PG. 67)
 - () R7 RECORD PER SARGENT ESTATES SUBDIVISION
(VOL. 21, PG. 20)
 - () R8 RECORD PER INST. #2007-026117
(CIRCLE DRIVE EXTENSION)

CURVE TABLE

CURVE	CHORD BEARING	CHORD LENGTH	RADIUS	CURVE LENGTH	DELTA
C1	S2°59'50"W	11.58'	120.00'	11.59'	5°31'58"
() R8	N2°40'19"E	11.58'	120.00'	11.59'	
C2	S2°04'24"W	11.58'	180.00'	11.58'	3°41'07"
() R8	S1°44'59"W	11.58'	179.87'	11.58'	
C3	N2°04'24"E	11.58'	180.00'	11.58'	3°41'07"
C4	N2°59'50"E	11.58'	120.00'	11.59'	5°31'58"

LINE TABLE

LINE	BEARING	LENGTH
1	S89°46'09"E	60.19'
() R8	S89°54'20"W	60.06'
2	N0°13'51"E	10.42'
3	N0°13'51"E	26.62'
4	S89°46'09"E	60.00'
5	N0°13'51"E	10.42'

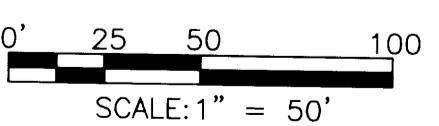
BASIS OF BEARING PER PP 1999-0068
 (385.70') R1
 N89°55'20"E 385.71'

LINNELL AVENUE (60' R/W)

SURVEYED BY:
i.e.
 ENGINEERING
 809 SE Pine Street
 Roseburg, Oregon 97470
 PHONE (541) 673-0166
 FAX (541) 440-9392
 iemail@ieengineering.com

SURVEYED FOR:
 FRED EARWOOD
 510 NW RACHEL LYNN WAY
 ROSEBURG, OR 97471

DWG. BY: DAF
 PM: AMP
 SCALE: AS NOTED
 PAGE: 1 OF 2
 JOB NO: 619-10
 DATE: SEPT., 2012



LAND PARTITION
 LYING IN THE NE 1/4 OF THE SE 1/4 & THE SE 1/4 OF THE NE 1/4 OF SECTION 10,
 TOWNSHIP 28 SOUTH, RANGE 6 WEST, WILLAMETTE MERIDIAN, DOUGLAS COUNTY, OREGON

PLANNING DEPARTMENT FILE NO. 12-M047

REGISTERED
 PROFESSIONAL
 LAND SURVEYOR

Ronald A. Gumbay
 OREGON
 JULY 14, 1978
 RONALD A. GUMBAY
 1654

EXPIRES: 12/31/2012