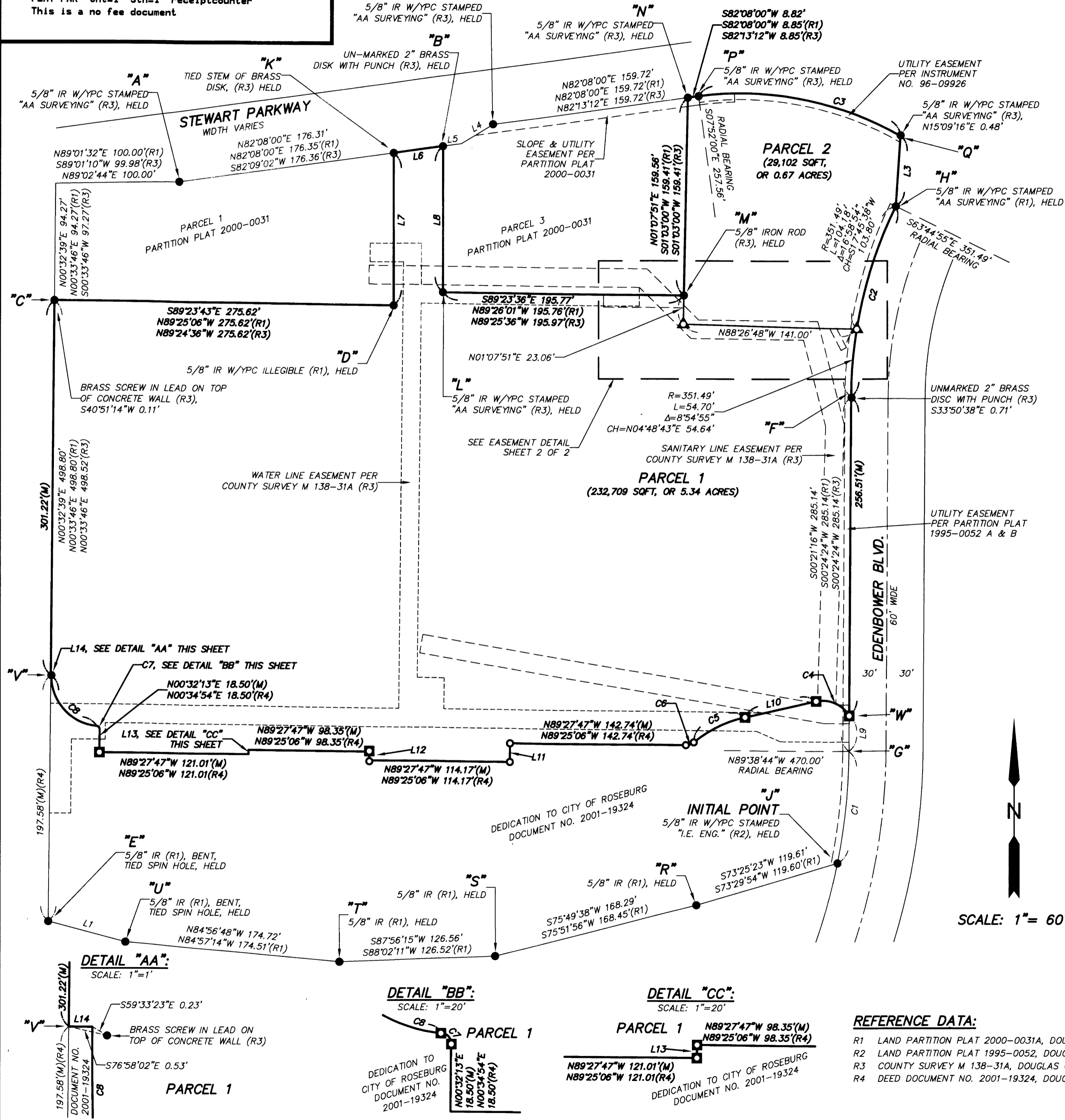


DOUGLAS COUNTY OFFICIAL RECORDS
 BARBARA E. NIELSEN, COUNTY CLERK
 2011-012494
 NO FEE
 08/29/2011 11:20:38 AM
 PLAT-PAR Cnt=1 Stn=1 receiptcounter
 This is a no fee document

A PORTION OF PARCEL 2 OF
 LAND PARTITION PLAT NO. 2000-0031
 SITUATED IN THE N.W. 1/4 OF SECTION 12, T.27S, R.6W, W.M.
 CITY OF ROSEBURG, DOUGLAS COUNTY, OREGON



LINE TABLE:

NO.	BEARING & DISTANCE	NO.	BEARING & DISTANCE	NO.	BEARING & DISTANCE
L1 (M)	N75°08'12"W 64.70'	L6 (M)	N82°08'00"E 40.35'	L10 (M)	S77°23'47"W 59.29'
(R1)	N75°05'02"W 64.85'	(R1)	N82°08'00"E 40.38'	(R4)	S77°26'28"W 59.29'
		(R3)	N82°13'12"E 40.35'		
L3 (M)	S03°48'49"W 56.81'	L7 (M)	N00°01'59"W 122.92'	L11 (M)	S00°32'13"W 14.97'
(R1)	N03°14'18"W 57.32'	(R1)	N00°00'00"E 122.90'	(R4)	S00°34'54"W 14.97'
(R3)	N03°51'41"W 57.32'	(R3)	N00°00'11"E 122.90'		
L4 (M)	N58°43'55"E 30.21'	LB (M)	S00°00'16"W 117.86'	L12 (M)	N00°32'13"E 7.00'
(R1)	N58°33'19"E 30.00'	(R1)	N00°00'00"W 117.88'	(R4)	N00°34'54"E 7.00'
(R3)	S58°20'35"W 30.28'	(R3)	N00°00'11"E 117.88'	L13 (M)	S00°32'13"W 3.51'
				(R4)	S00°34'54"W 3.51'
L5 (M)	N82°08'00"E 15.00'	L9 (M)	N00°21'16"E 28.63'	L14 (M)	N89°28'55"W 0.32'
(R1)	N82°08'00"E 15.00'	(R4)	N00°24'24"E 28.63'	(R4)	N89°26'14"W 0.50'
(R3)	N82°13'12"E 15.00'				

CURVE TABLE:

NO.	RADIUS	LENGTH	DELTA	CHORD
C1 (M)	470.00'	90.69'	11°03'21"	N05°52'56"E 90.55'
(R1)	470.00'	90.70'	11°03'23"	N05°56'06"E 90.55'
C2 (M)	351.49'	158.87'	25°53'49"	S13°18'10"W 157.52'
(R1)	351.49'	158.87'	25°53'49"	S13°21'19"W 157.52'
(R3)	351.49'	159.29'	25°57'58"	S13°09'38"W 157.93'
C3 (M)	257.56'	170.23'	37°52'09"	S78°55'56"E 167.15'
(R1)	257.56'	170.23'	37°52'09"	S78°55'54"E 167.15'
(R3)	257.56'	170.23'	37°52'09"	S79°05'07"E 167.15'
C4 (M)	25.00'	31.22'	71°32'58"	N66°24'03"W 29.23'
(R4)	25.00'	31.22'	71°32'58"	N66°21'22"W 29.23'
C5 (M)	100.00'	46.66'	26°44'08"	S64°01'43"W 46.24'
(R4)	100.00'	46.66'	26°44'08"	S64°04'20"W 46.24'
C6 (M)	10.00'	6.96'	39°52'32"	S70°35'56"W 6.82'
(R4)	10.00'	6.96'	39°52'32"	S70°38'35"W 6.82'
C7 (M)	2.50'	3.74'	85°41'14"	N42°15'17"W 3.40'
(R4)	2.50'	3.73'	85°41'14"	N42°12'36"W 3.40'
C8 (M)	40.50'	60.49'	85°34'18"	N42°15'51"W 55.02'
(R4)	40.50'	60.48'	85°34'18"	N42°13'10"W 55.02'

- LEGEND:**
- SET 5/8" X 30" IR WITH A YELLOW PLASTIC CAP STAMPED "PLS 2351" ON JULY 19, 2011.
 - △ SET 5/8" X 30" IR WITH A 1-1/2" ALUMINUM CAP STAMPED "PLS 2351" ON JULY 19, 2011.
 - SET 1" COPPER DISC STAMPED "PLS 2351" ON JULY 19, 2011.
 - FOUND MONUMENT AS NOTED
 - FND FOUND
 - (R#) RECORD DATA
 - (M) MEASURED DATA
 - IR IRON ROD
 - W/YPC WITH A YELLOW PLASTIC CAP
 - SQFT SQUARE FEET
 - EASEMENT
 - WATER EASEMENT

SURVEYED FOR:
 NEW ALBERTSONS INC.
 PO BOX 20
 BOISE, ID
 (208) 395-6200

REGISTERED
 PROFESSIONAL
 LAND SURVEYOR

Thomas G. Nelson
 OREGON
 JULY 26, 1988
 THOMAS G. NELSON
 #2351
 RENEWAL 12/31/12

- REFERENCE DATA:**
- R1 LAND PARTITION PLAT 2000-0031A, DOUGLAS COUNTY PLAT RECORDS
 - R2 LAND PARTITION PLAT 1995-0052, DOUGLAS COUNTY PLAT RECORDS
 - R3 COUNTY SURVEY M 138-31A, DOUGLAS COUNTY SURVEY RECORDS
 - R4 DEED DOCUMENT NO. 2001-19324, DOUGLAS COUNTY DEED RECORDS

Tom Nelson & Associates, L.L.C.

1001 SE WATER AVE, SUITE 390
 PORTLAND, OREGON 97214
 PHONE: (503) 230-1932
 FAX: (503) 230-1962

PROJECT NO.: 10210 DATE: JULY 20, 2011
 DRAWN BY: SRZ SHEET: 1 OF 2

2011-0026 A

2011-0026 A