

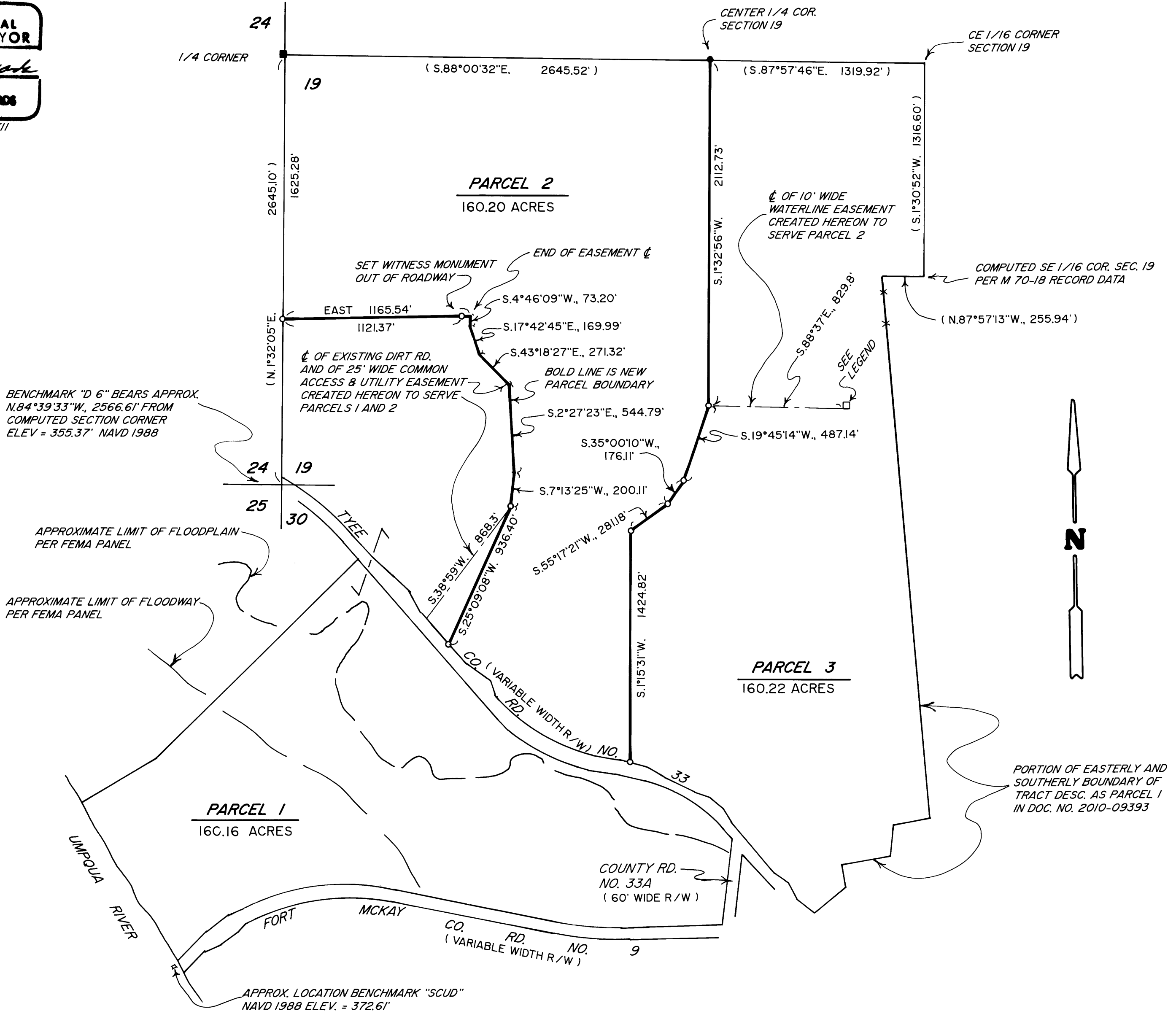
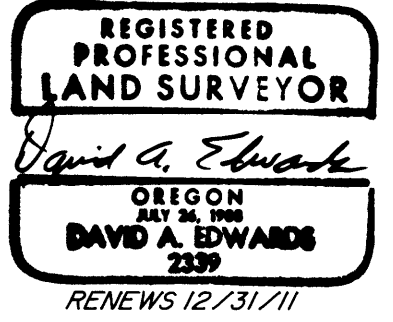
LAND PARTITION

LOCATED in Sections 19 & 30, T. 25 S., R. 6 W., W.M. and in Section 25, T. 25 S., R. 7 W., W.M.
in Douglas County, Oregon.

April 18, 2011

SURVEYED FOR: R & M PIERCE FAMILY TRUST
525 FAIRWAY ESTATES DRIVE
SUTHERLIN, OREGON 97479

SURVEYED BY: DAVID EDWARDS LAND SURVEYING
P.O. BOX 361
OAKLAND, OREGON 97462
PHONE: (541) 459-0512



LEGEND

- INDICATES CORNER TREE FOUND PER 2007 D.C.S. RENEWAL. SEE PARTITION PLAT 2010-0043.
 - INDICATES 5/8" DIAM. IRON ROD FOUND PER M 70-18.
 - INDICATES 5/8" X 30" STEEL REBAR WITH RED PLASTIC CAP MKD. "D.A. EDWARDS-LS 2339" SET.
 - () DENOTES RECORD DATA PER PARTITION PLAT NUMBER 2010-0043.
- SCALE: 1" = 500'
- BASIS OF BEARINGS: EXISTING CONTROL PER PART. PLAT NO. 2010-0043.
- INDICATES A 40' SQUARE SPRING EASEMENT. THE BEARINGS OF THE SIDELINES ARE EAST-WEST AND NORTH-SOUTH AND THE SW CORNER OF THE EASEMENT BEARS S.19°55'02"E., 2267.65' FROM THE CENTER 1/4 CORNER.

