

DOUGLAS COUNTY OFFICIAL RECORDS  
 BARBARA E. NIELSEN, COUNTY CLERK  
 2010-010677  
 NO FEE  
 06/30/2010 02:45:09 PM  
 PLAT-PAR Cnt=1 Stn=1 RECEIPTCOUNTER  
 This is a no fee document

TBM  
 SEE NOTE 2  
 THIS SHEET  
 ELEV. = 474.03

WINCHESTER CREEK  
 (VOL. 21, PG. 42)

SADDLE BUTTE ESTATES  
 3RD ADDITION  
 (VOL. 17, PG. 41)

SADDLE BUTTE ESTATES  
 4TH ADDITION  
 (VOL. 17, PG. 43)

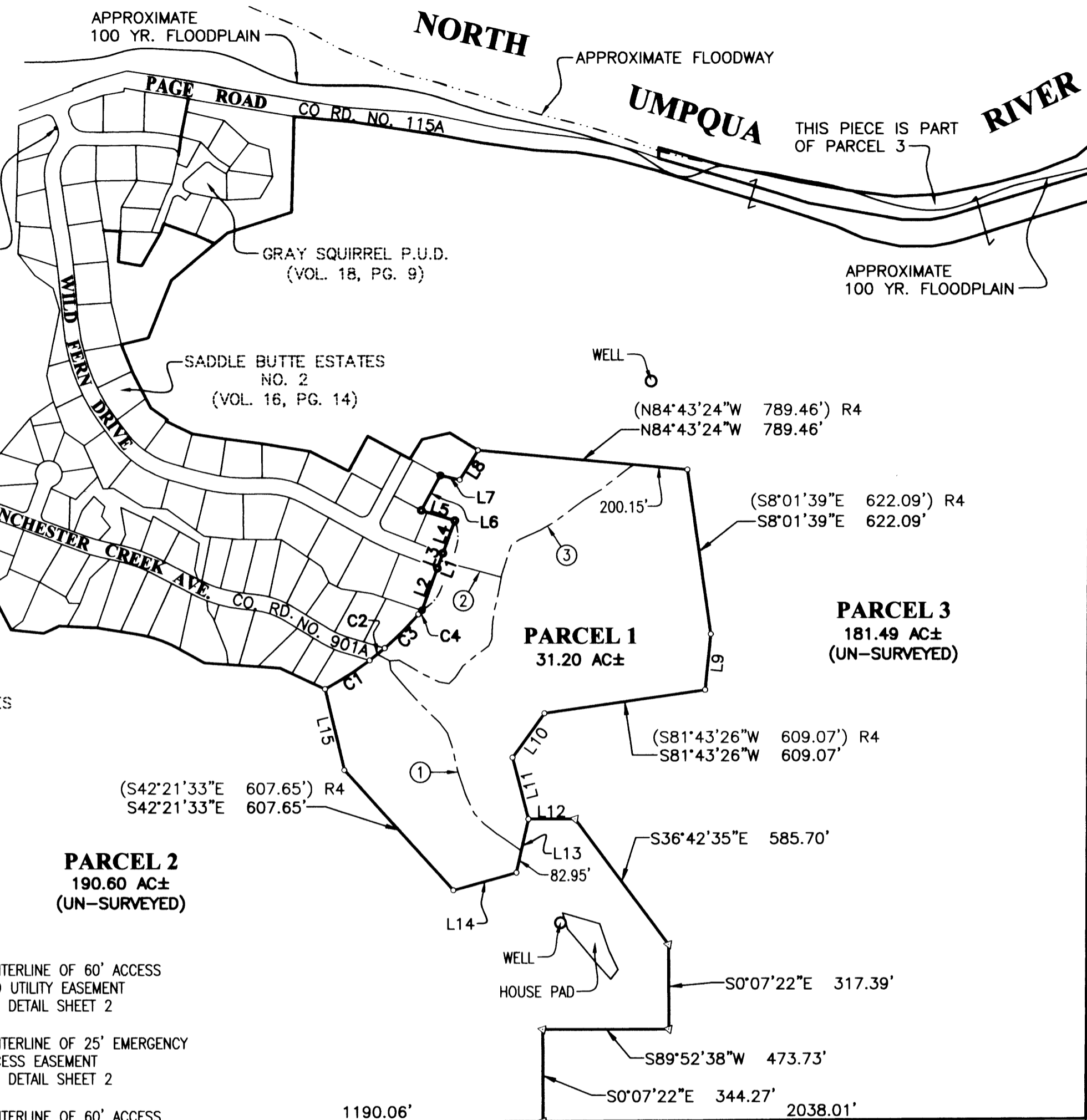
SADDLE BUTTE ESTATES  
 6TH ADDITION  
 (VOL. 19, PG. 3)

SADDLE BUTTE ESTATES  
 8TH ADDITION  
 (VOL. 21, PG. 3)

TAFT SUBDIVISION,  
 PHASE 2  
 (VOL. 21, PG. 36)

TAFT SUBDIVISION,  
 PHASE 3  
 (VOL. 21, PG. 48)

TAFT SUBDIVISION,  
 PHASE 1  
 (VOL. 21, PG. 9)



- ① CENTERLINE OF 60' ACCESS AND UTILITY EASEMENT SEE DETAIL SHEET 2
- ② CENTERLINE OF 25' EMERGENCY ACCESS EASEMENT SEE DETAIL SHEET 2
- ③ CENTERLINE OF 60' ACCESS AND UTILITY EASEMENT SEE DETAIL SHEET 2

NOTE: ALL EASEMENTS TO BE CENTERED OVER EXISTING LOGGING ROADS

**LEGEND**

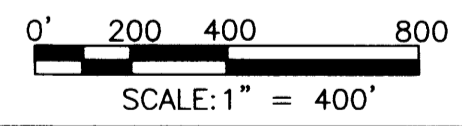
- SET 5/8" x 30" IR w/CAP MARKED "I.E. ENGINEERING" UNLESS OTHERWISE NOTED
  - FOUND 5/8" IRON ROD UNLESS OTHERWISE NOTED
  - FOUND ALUMINUM CAP
  - ◁ CALCULATED POSITION
- ( ) R1 RECORD AS PER VOL. 21, PG. 42  
 ( ) R2 RECORD AS PER VOL. 16, PG. 14  
 ( ) R3 RECORD AS PER M92-71  
 ( ) R4 RECORD AS PER M158-68

**NOTES:**

1. EXTERIOR BOUNDARIES OF PARCELS 2 & 3 PER DOUGLAS COUNTY ASSESSOR & GIS DATA
2. TBM STATION "PAGE-2" DCSO DRILL CAP STAMPED "PAGE-2 2000" PER DOUGLAS COUNTY SURVEYOR'S OFFICE ELEV. = 474.03

CURVE TABLE						
CURVE	CHORD BEARING	CHORD LENGTH	RADIUS	CURVE LENGTH	DELTA	RECORD
1	N57°21'01"E (N57°05'44"E)	198.89' 199.53'	1275.00' 1275.00'	199.09' 199.73'	8°56'48"	R1
2	N50°56'58"E	72.81'	1275.00'	72.82' (72.75')	3°16'21"	R1
3	N44°59'01"E (N45°19'22"E)	179.88' 178.59'	1275.00' 1275.00'	180.03' 178.74'	8°05'24"	R1
4	N40°57'06"E (N40°51'27"E)	19.95' 20.00'	1275.00' 1275.00'	19.95' 20.00'	0°53'47"	R1

LINE TABLE			
LINE	BEARING	LENGTH	RECORD
1	N20°14'54"E (N20°13'04.4"E)	357.61' 357.37'	R2
2	N20°14'54"E (N20°13'04.4"E)	167.37' 167.37'	R2
3	N20°14'54"E (N20°13'04.4"E)	60.11' 60.00'	R2
4	N20°14'54"E (N20°13'04.4"E)	130.13' 130.00'	R2
5	N73°09'08"W (N73°05'19.5"W)	131.74' 131.77'	R2
6	N28°49'47"E (N28°40'04.4"E)	149.71' 150.00'	R2
7	N77°15'17"W (N77°25'13"W)	74.77' 74.91'	R3
8	N31°45'42"E (S31°39'29"W)	130.54' 130.46'	R3
9	S5°54'49"W (S5°54'49"W)	210.01' 210.01'	R4
10	S35°58'05"W (S35°58'05"W)	205.23' 205.23'	R4
11	S14°28'45"E (S14°28'45"E)	237.40' 237.40'	R4
12	N89°52'38"E (N89°52'38"E)	175.50' 175.50'	R4
13	S12°49'29"W (S12°49'29"W)	205.60' 205.60'	R4
14	S74°25'34"W (S74°25'34"W)	245.45' 245.45'	R4
15	S13°16'57"E (S13°16'57"E)	312.02' 312.02'	R4



PLANNING DEPARTMENT FILE NO. 08-136

<p><b>REGISTERED PROFESSIONAL LAND SURVEYOR</b></p> <p><i>Ronald A. Gumbey</i></p> <p>OREGON          JULY 14, 1978          RONALD A. GUMBAY          1964</p> <p>EXPIRES: 12/31/2010</p>	<p><b>LAND PARTITION</b></p> <p>LYING IN SECTION 30 &amp; IN THE N.W. 1/4 OF SECTION 31, T26S, R5W, WILLAMETTE MERIDIAN, DOUGLAS COUNTY, OREGON</p>	
	<p>SURVEYED FOR:</p> <p>YELLOW PINE, L.L.C.          P.O. BOX 387          OREGON CITY, OR., 97045</p>	<p>SURVEYED BY:</p> <p><b>i.e.</b>          [ENGINEERING] iemail@ieengineering.com</p>
<p>SCALE: AS NOTED</p>	<p>JOB NO: 1968-15          DATE: JAN., 2010</p>	<p>DWG. BY: DAF          PM: AMP</p>

2010-0025 A

2010-0025 A