

2008-0085 A

DOUGLAS COUNTY OFFICIAL RECORDS
BARBARA E. NIELSEN, COUNTY CLERK

2008-020777



NO FEE

11/21/2008 10:59:06 AM

PLAT-PAR Crt=1 Str=1 RECEIPTCOUNTER
This is a no fee document

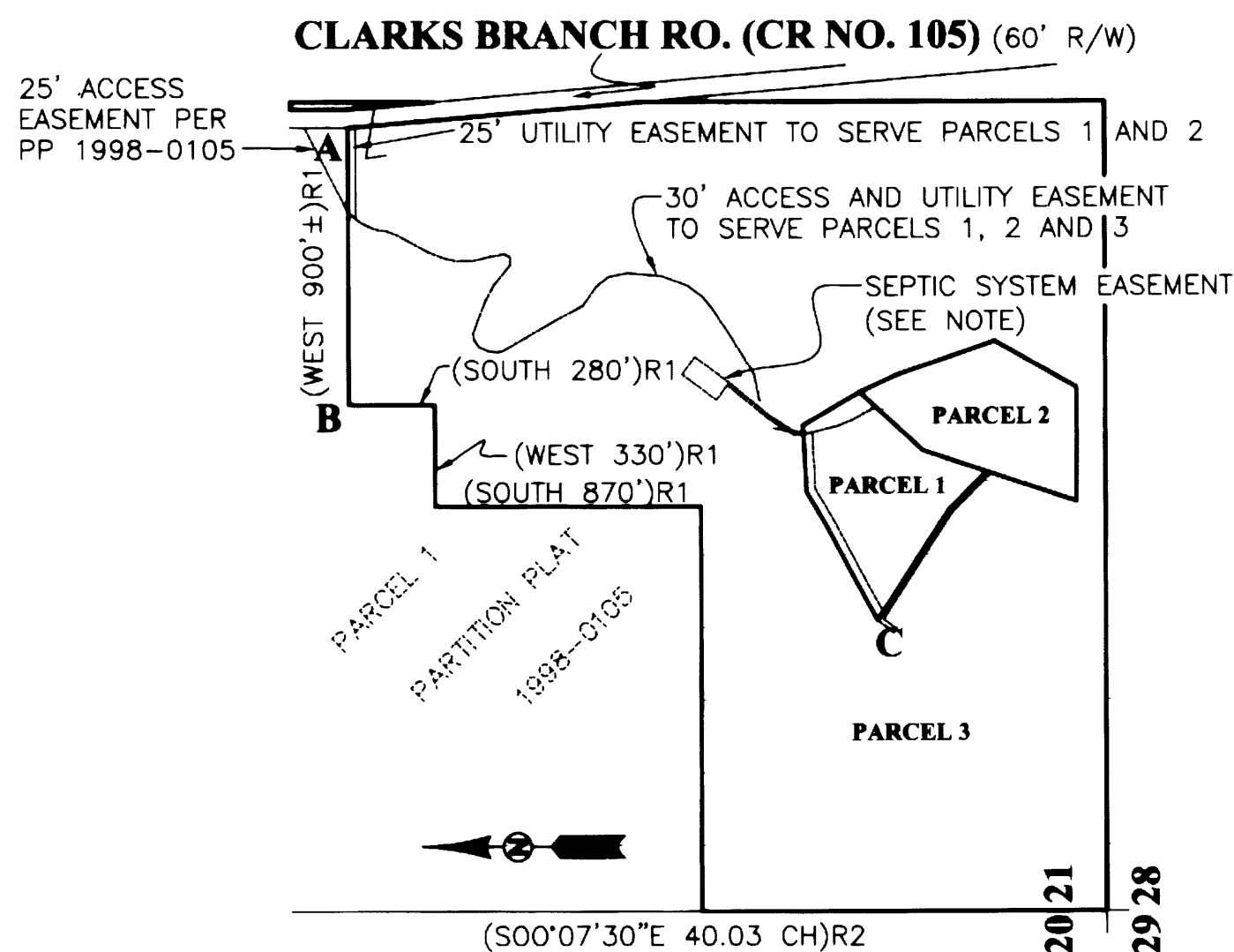
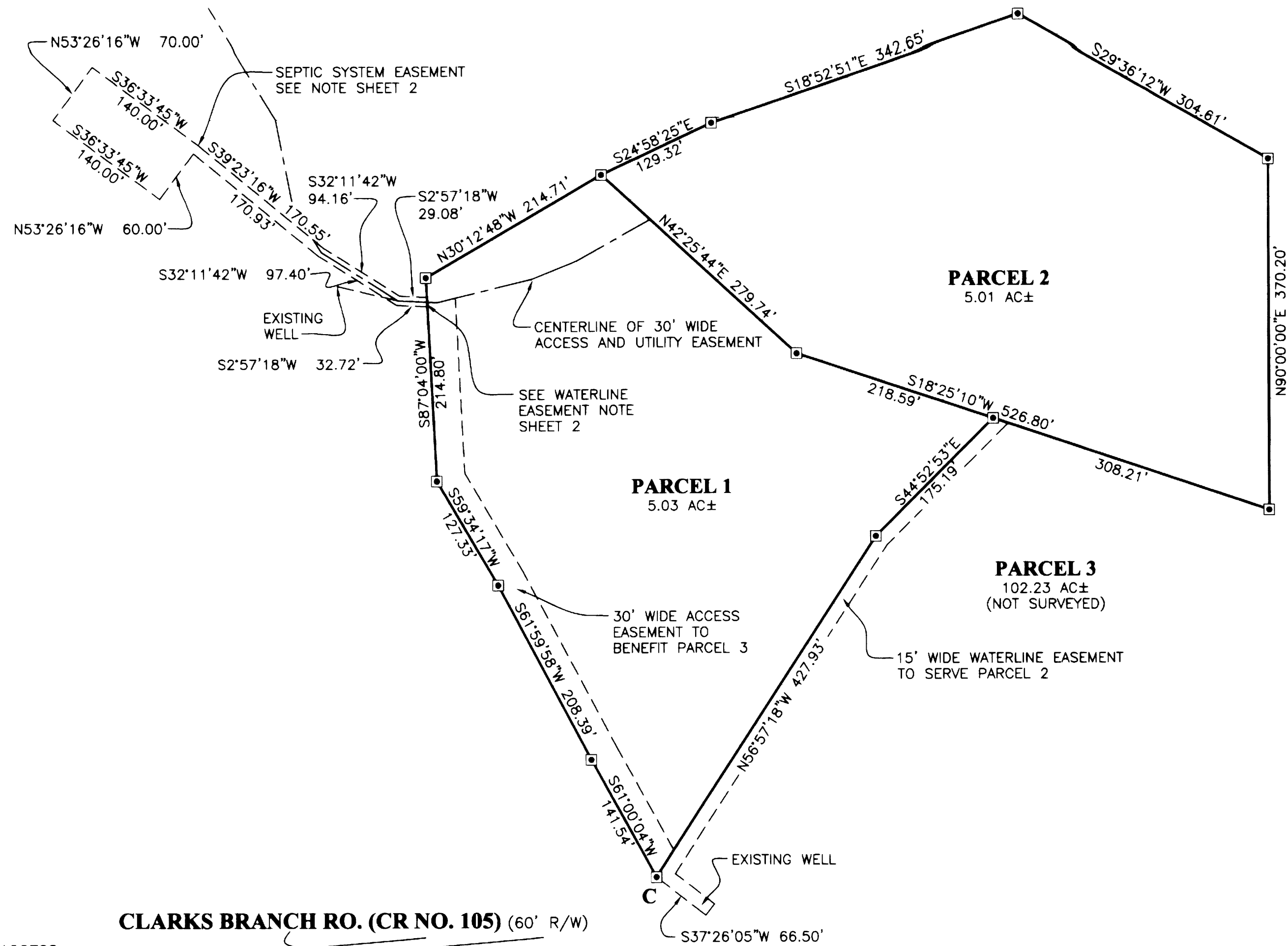
30' ACCESS AND UTILITY EASEMENT.

LYING 15 FEET ON EACH SIDE OF THE FOLLOWING DESCRIBED CENTERLINE:
BEGINNING AT A POINT ON THE MOST NORTHERLY SOUTH BOUNDARY OF PARCEL 1 OF PARTITION PLAT 1998-0105, DOUGLAS COUNTY PLAT RECORDS, FROM WHICH THE MOST EASTERLY SOUTHEAST CORNER OF SAID PARCEL 1 BEARS SOUTH 00°00'00" EAST, 276.17 FEET; THENCE LEAVING SAID SOUTH BOUNDARY AND ALONG THE CENTERLINE OF AN EXISTING ROAD THE FOLLOWING COURSES:

SOUTH 37°44'42" WEST, 52.56 FEET TO A POINT;
THENCE SOUTH 24°33'19" WEST, 48.71 FEET TO A POINT;
THENCE SOUTH 12°56'34" WEST, 29.66 FEET TO A POINT;
THENCE SOUTH 16°50'34" WEST, 20.79 FEET TO A POINT;
THENCE SOUTH 21°47'32" WEST, 46.10 FEET TO A POINT;
THENCE SOUTH 28°25'25" WEST, 111.24 FEET TO A POINT;
THENCE SOUTH 20°44'31" WEST, 53.51 FEET TO A POINT;
THENCE SOUTH 12°06'50" WEST, 44.00 FEET TO A POINT;
THENCE SOUTH 00°52'28" EAST, 56.41 FEET TO A POINT;
THENCE SOUTH 13°44'56" EAST, 49.39 FEET TO A POINT;
THENCE SOUTH 11°07'04" EAST, 57.71 FEET TO A POINT;
THENCE SOUTH 28°05'14" WEST, 23.69 FEET TO A POINT;
THENCE NORTH 84°28'02" WEST, 25.45 FEET TO A POINT;
THENCE NORTH 51°02'13" WEST, 85.75 FEET TO A POINT;
THENCE NORTH 61°16'18" WEST, 60.72 FEET TO A POINT;
THENCE NORTH 69°01'59" WEST, 108.09 FEET TO A POINT;
THENCE SOUTH 79°33'37" WEST, 23.93 FEET TO A POINT;
THENCE SOUTH 53°51'54" WEST, 24.85 FEET TO A POINT;
THENCE SOUTH 23°49'57" WEST, 35.74 FEET TO A POINT;
THENCE SOUTH 06°20'36" WEST, 27.67 FEET TO A POINT;
THENCE SOUTH 13°18'30" EAST 17.17 FEET TO A POINT;
THENCE SOUTH 29°50'57" EAST 170.73 FEET TO A POINT;
THENCE SOUTH 28°09'22" EAST 133.96 FEET TO A POINT;
THENCE SOUTH 54°46'51" EAST 73.83 FEET TO A POINT;
THENCE SOUTH 38°00'08" EAST 51.69 FEET TO A POINT;
THENCE SOUTH 10°36'16" EAST 61.46 FEET TO A POINT;
THENCE SOUTH 04°20'41" WEST 111.66 FEET TO A POINT;
THENCE SOUTH 21°04'13" WEST 93.79 FEET TO A POINT;
THENCE SOUTH 36°07'02" WEST 53.08 FEET TO A POINT;
THENCE SOUTH 50°29'52" WEST 57.46 FEET TO A POINT;
THENCE SOUTH 55°55'10" WEST 98.13 FEET TO A POINT;
THENCE SOUTH 58°19'03" WEST 150.99 FEET TO A POINT;
THENCE SOUTH 78°43'11" WEST 95.68 FEET TO A POINT;
THENCE SOUTH 57°41'03" WEST 54.82 FEET TO A POINT;
THENCE SOUTH 32°11'42" WEST 95.78 FEET TO A POINT;
THENCE SOUTH 02°57'18" WEST 41.40 FEET TO A POINT;
THENCE SOUTH 13°37'29" EAST 103.74 FEET TO A POINT;
THENCE SOUTH 22°00'03" EAST 49.85 FEET TO A POINT;
THENCE SOUTH 29°02'17" EAST 89.76 FEET TO A POINT AND THERE TERMINATING.

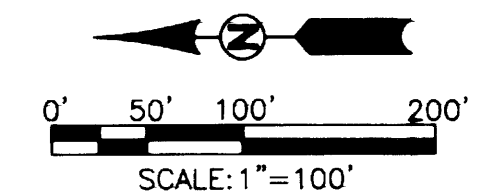
25' UTILITY EASEMENT.

A STRIP OF LAND, BEING THE NORTH 25 FEET OF PARCEL 3, AS SHOWN HEREON, LYING EAST OF THE 30 FOOT ACCESS AND UTILITY EASEMENT, SHOWN AND DESCRIBED HEREON, TO ITS INTERSECTION WITH THE WESTERLY RIGHT-OF-WAY OF CLARK'S BRANCH ROAD (COUNTY ROAD NO. 105) AS SHOWN HEREON. THE SIDELINES OF SAID STRIP OF LAND SHALL BE LENGTHENED OR SHORTENED IN ORDER TO BEGIN AND TERMINATE ON THE ABOVE DESCRIBED BOUNDARIES.



OVERALL SCHEMATIC
SCALE: NTS

- LEGEND**
- SET 5/8" x 30" IR w/CAP MARKED "I.E. ENGINEERING" UNLESS OTHERWISE NOTED
 - () R1 RECORD AS PER LP 1998-0105
 - () R2 RECORD AS PER VOL. 1, PG. 240-241



2008-0085 A

REGISTERED PROFESSIONAL LAND SURVEYOR

Ronald A. Gumbey
OREGON
JULY 14, 1978
RONALD A. GUMBAY
1964

EXPIRES: 12/31/2008

LAND PARTITION

LYING IN THE SW 1/4 OF SECTION 21, TOWNSHIP 28 SOUTH, RANGE 5 WEST, WILLAMETTE MERIDIAN, DOUGLAS COUNTY, OREGON

SURVEYED FOR:
GEORGE AND BEVERLY HAWKS
121 SWEENEY CT.
EL SOBRANTE, CA 94803

SURVEYED BY:
809 SE Pine Street
Roseburg, Oregon 97470
PHONE (541) 673-0166
FAX (541) 440-9392
email@ieengineering.com



DWG. BY: DAF