

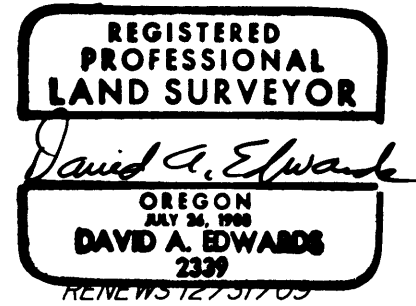
# LAND PARTITION

LOCATED in the SW 1/4 of Section 36, T. 24 S., R. 6 W., W.M.  
in Douglas County, Oregon.

August 8, 2008

SURVEYED FOR: DAN AND TINA MCKINNEY  
4673 GREEN VALLEY ROAD  
OAKLAND, OREGON

SURVEYED BY: DAVID EDWARDS LAND SURVEYING,  
P.O. BOX 361  
OAKLAND, OREGON 97462  
PHONE: (541) 459-0512

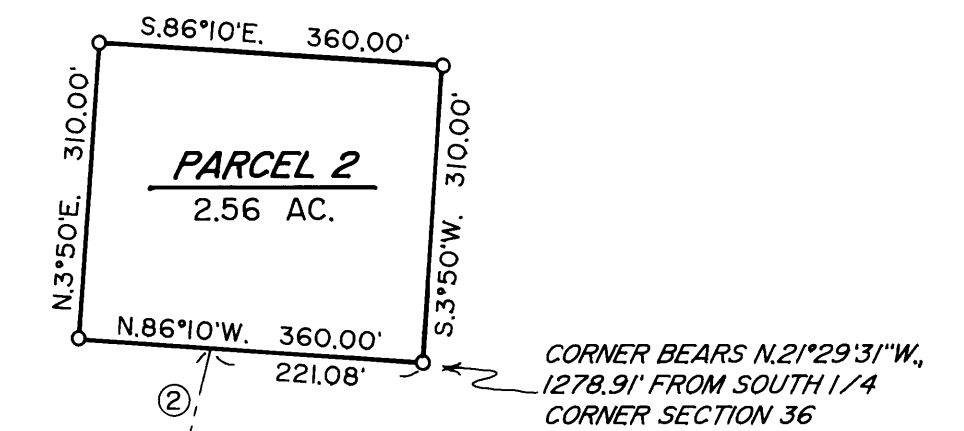
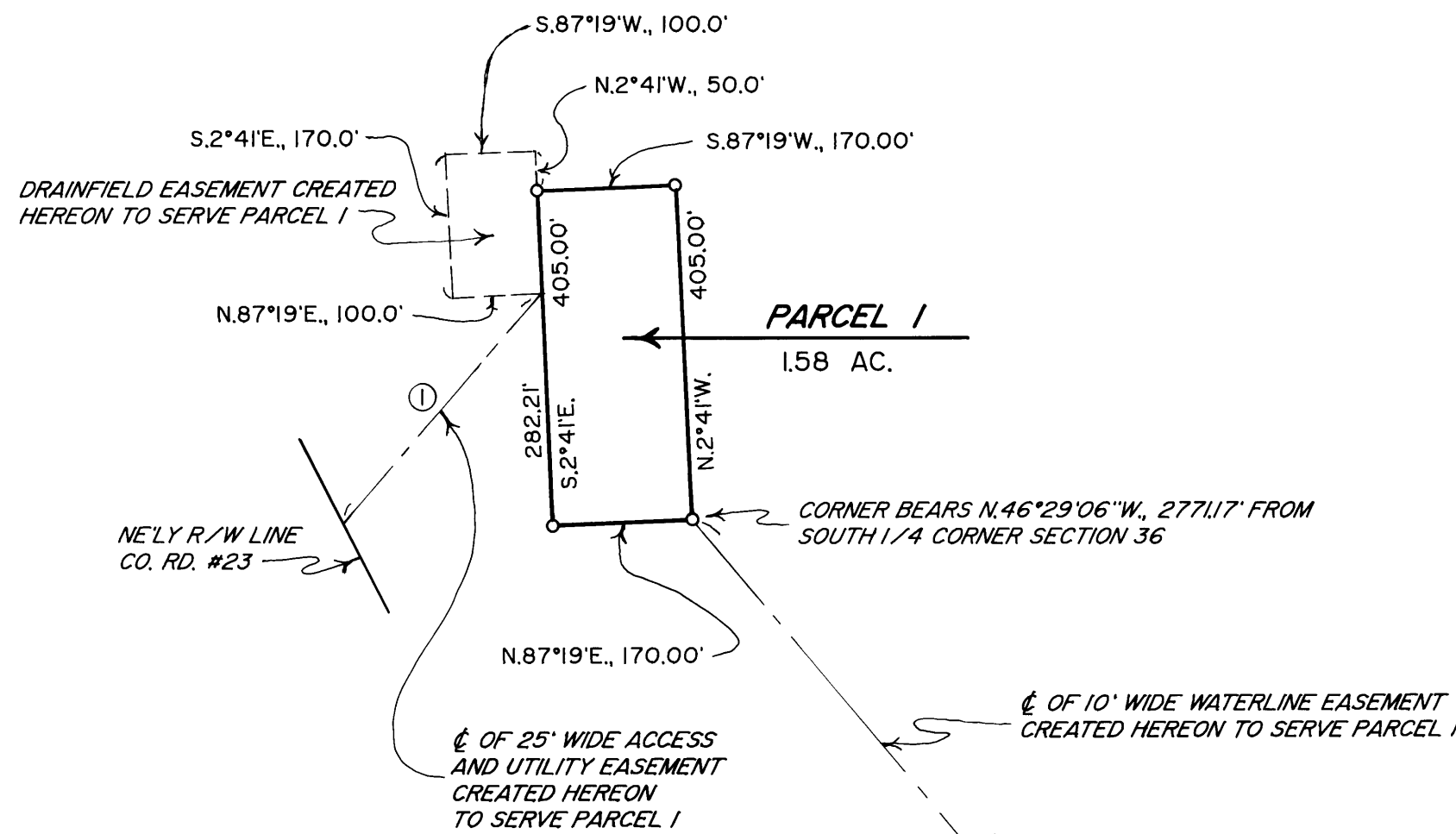


## LEGEND

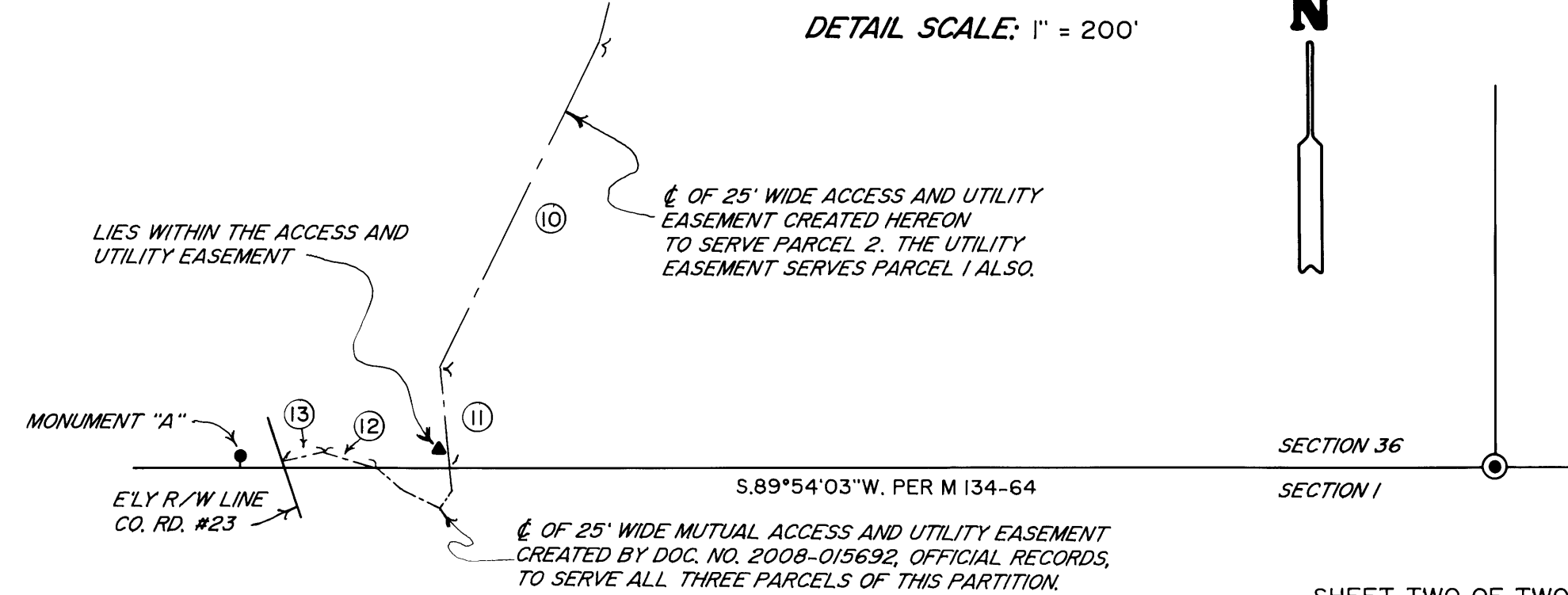
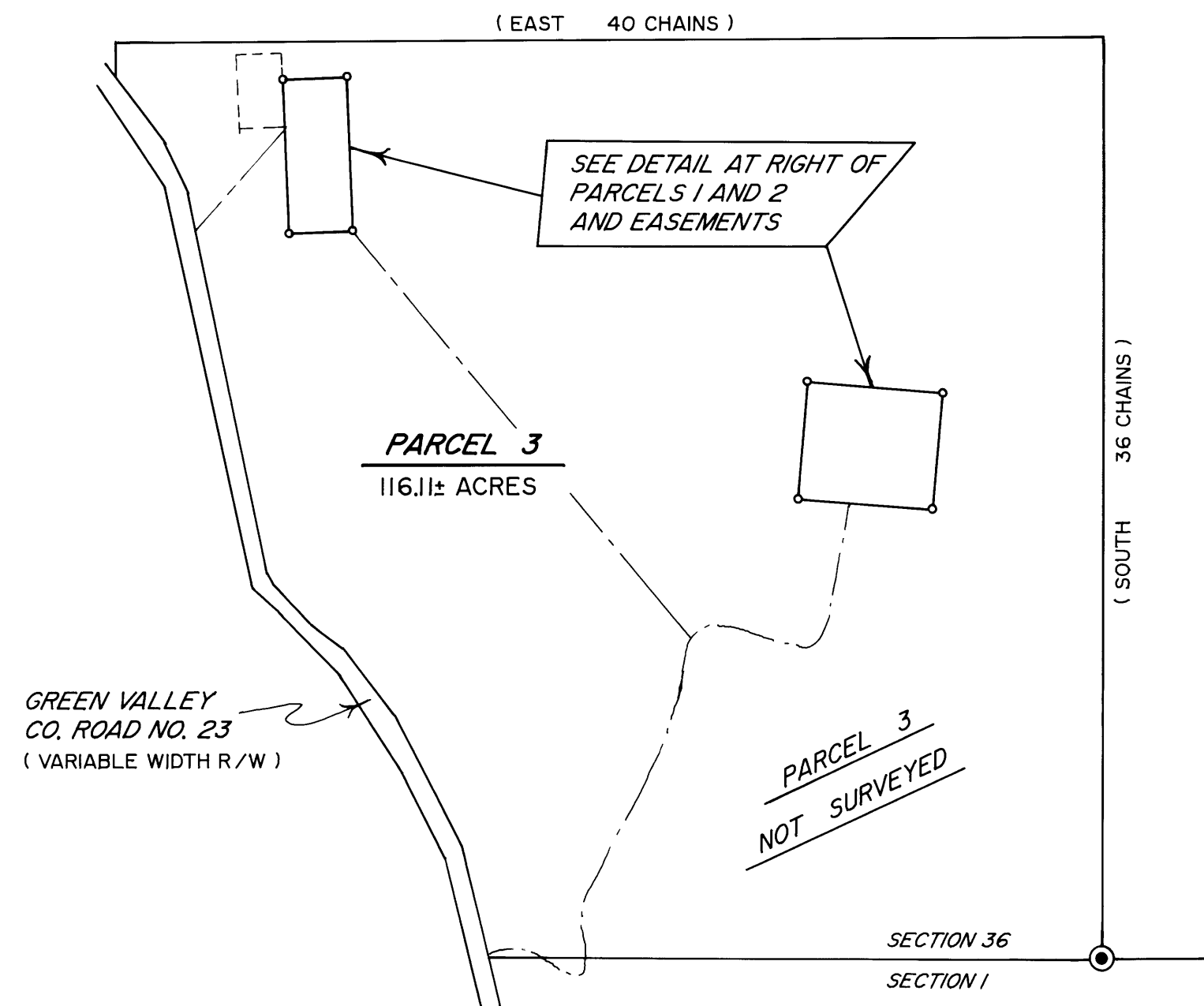
- ⊙ INDICATES D.C.S. BRASS CAP FOUND AT THE SOUTH 1/4 CORNER OF SECTION 36.
- INDICATES 5/8" DIAM. IRON ROD R/W MONUMENT FOUND.
- INDICATES 5/8" X 30" STEEL REBAR WITH RED PLASTIC CAP MKD. "D.A. EDWARDS-LS 2339" SET.
- ( ) DENOTES DEED RECORD DATA.
- ▲ INDICATES WELL LOCATION.

SCALE: 1" = 400'

BASIS OF BEARINGS: COMPUTED BETWEEN MONUMENT "A" AND 1/4 CORNER PER M 134-64.  
RECORD = N.89°55'30"E., 1651.22'  
MEASURED = N.89°55'30"E., 1651.03'



LINE NO.	BEARING	DISTANCE
①	S.40°48'03"W.	425± TO NE'LY R/W LINE
②	S.13°54'45"W.	124.80'
④	S.20°34'58"W.	52.67'
⑤	S.43°43'53"W.	38.39'
⑥	N.75°02'15"W.	223.26'
⑦	S.89°39'54"W.	55.35'
⑧	S.49°42'32"W.	56.63'
⑨	S.14°28'07"W.	295.16'
⑩	S.26°13'37"W.	472.95'
⑪	S.5°32'03"E.	134.22'
⑫	N.72°31'22"W.	71.06'
⑬	S.75°09'59"W.	54± TO E'LY R/W LINE
⑬	S.8°45'53"W.	187.83'



SECTION 36  
SECTION 1

2008-0077 B

2008-0077 B