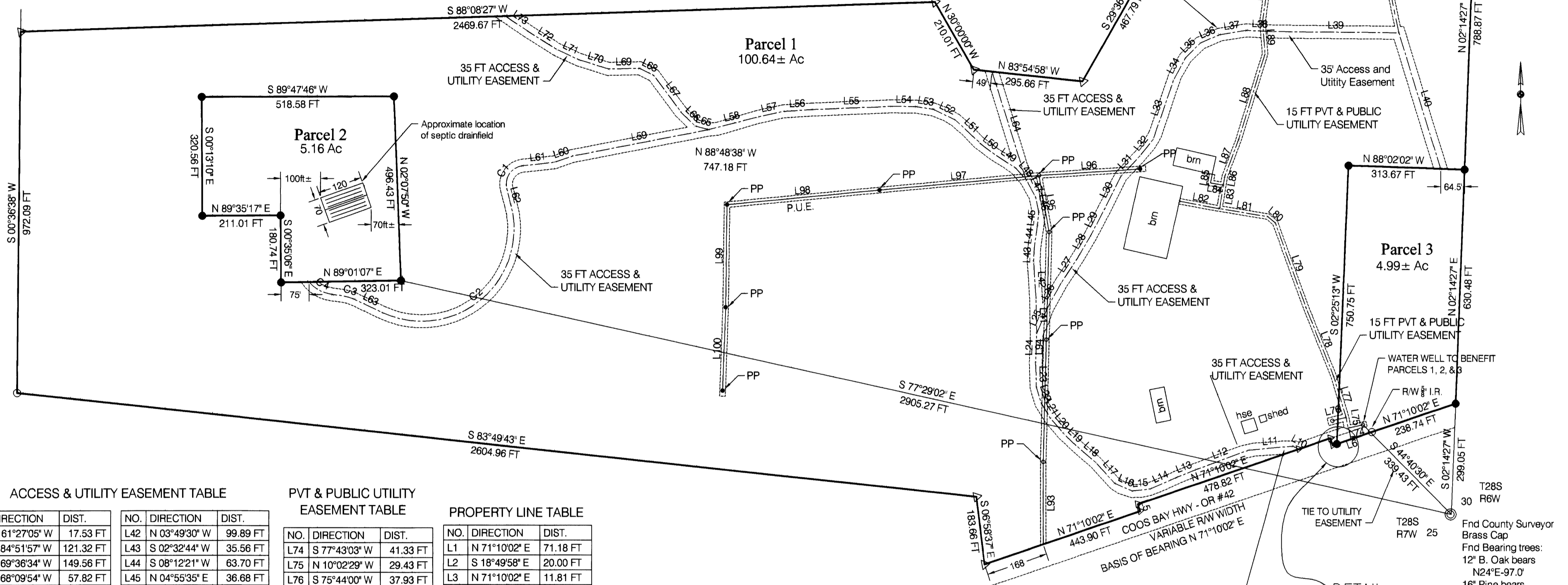


DOUGLAS COUNTY OFFICIAL RECORDS
 BARBARA E. NIELSEN, COUNTY CLERK
 2008-019573
 NO FEE
 00230120200800195730020022
 10/28/2008 01:06:30 PM
 PLAT-PAR Cnt=1 Stn=1 RECEIPTCOUNTER
 This is a no fee document

LAND PARTITION

DEED NO. 1994-24492
 N 1/2, SEC 25, TWP 28 S, R 7 W, WM
 DOUGLAS COUNTY, OREGON
 AUGUST 2008
 SCALE 1" = 200'

SHEET 1 OF 2



ACCESS & UTILITY EASEMENT TABLE

NO.	DIRECTION	DIST.	NO.	DIRECTION	DIST.
L10	N 61°27'05" W	17.53 FT	L42	N 03°49'30" W	99.89 FT
L11	S 84°51'57" W	121.32 FT	L43	S 02°32'44" W	35.56 FT
L12	S 69°36'34" W	149.56 FT	L44	S 08°12'21" W	63.70 FT
L13	S 68°09'54" W	57.82 FT	L45	N 04°55'35" E	36.68 FT
L14	S 66°39'20" W	78.59 FT	L46	N 12°05'38" W	41.32 FT
L15	S 83°22'37" W	48.26 FT	L47	N 29°20'29" W	51.05 FT
L16	N 65°56'45" W	52.29 FT	L48	N 41°48'34" W	43.62 FT
L17	N 41°59'51" W	74.81 FT	L49	N 56°44'36" W	67.83 FT
L18	N 49°12'53" W	62.84 FT	L50	N 53°02'20" W	53.87 FT
L19	N 46°37'48" W	56.64 FT	L51	N 46°54'18" W	85.38 FT
L20	N 40°20'05" W	51.63 FT	L52	N 64°23'01" W	65.82 FT
L21	N 31°42'24" W	46.44 FT	L53	N 80°58'45" W	47.05 FT
L22	N 17°19'30" W	46.61 FT	L54	N 89°17'29" W	67.43 FT
L23	N 01°35'37" W	68.04 FT	L55	S 87°47'53" W	214.25 FT
L24	N 01°59'57" E	77.04 FT	L56	S 86°36'44" W	77.30 FT
L25	N 23°01'31" E	73.39 FT	L57	S 77°36'09" W	70.55 FT
L26	N 28°40'24" E	78.95 FT	L58	S 75°36'34" W	136.95 FT
L27	N 33°17'27" E	92.21 FT	L59	S 79°03'29" W	375.57 FT
L28	N 30°34'05" E	56.05 FT	L60	S 70°50'39" W	50.24 FT
L29	N 27°12'11" E	80.49 FT	L61	S 83°31'43" W	87.41 FT
L30	N 26°37'47" E	99.96 FT	L62	S 15°06'21" E	41.79 FT
L31	N 43°14'22" E	75.12 FT	L63	N 64°41'21" W	83.06 FT
L32	N 38°28'39" E	57.02 FT	L64	N 17°23'14" W	305.54 FT
L33	N 19°03'48" E	167.97 FT	L65	N 75°09'10" W	38.32 FT
L34	N 28°23'53" E	69.33 FT	L66	N 45°27'24" W	53.52 FT
L35	N 45°12'34" E	56.01 FT	L67	N 36°43'36" W	122.65 FT
L36	N 66°38'24" E	56.04 FT	L68	N 63°26'39" W	42.97 FT
L37	N 80°58'50" E	73.95 FT	L69	S 88°43'39" W	83.71 FT
L38	S 87°29'20" E	71.86 FT	L70	N 72°42'41" W	83.49 FT
L39	S 89°27'31" E	340.86 FT	L71	N 65°29'48" W	65.68 FT
L40	S 17°06'33" E	382.88 FT	L72	N 57°41'03" W	93.89 FT
L41	N 00°56'58" W	93.07 FT	L73	N 56°00'42" W	70.61 FT

PVT & PUBLIC UTILITY EASEMENT TABLE

NO.	DIRECTION	DIST.
L74	S 77°43'03" W	41.33 FT
L75	N 10°02'29" W	29.43 FT
L76	S 75°44'00" W	37.93 FT
L77	N 16°49'02" W	116.22 FT
L78	N 22°05'09" W	195.76 FT
L79	N 20°02'26" W	245.92 FT
L80	N 50°29'15" W	26.66 FT
L81	N 80°36'53" W	132.01 FT
L82	N 79°43'47" W	109.50 FT
L83	N 09°27'33" E	63.98 FT
L84	N 80°32'27" W	35.28 FT
L85	N 09°27'33" E	23.82 FT
L86	N 09°27'33" E	23.95 FT
L87	N 20°41'19" E	104.22 FT
L88	N 17°10'32" E	242.90 FT
L89	N 04°13'22" W	87.43 FT
L90	N 07°39'00" E	153.44 FT
L91	N 38°14'53" E	40.50 FT
L92	N 18°56'18" E	55.87 FT

PROPERTY LINE TABLE

NO.	DIRECTION	DIST.
L1	N 71°10'02" E	71.18 FT
L2	S 18°49'58" E	20.00 FT
L3	N 71°10'02" E	11.81 FT
L4	N 71°10'02" E	99.93 FT
L5	N 18°49'58" W	20.00 FT
L6	N 71°10'02" E	99.93 FT

CONDITIONS FOR SEPTIC DRAINFIELD EASEMENTS
 SEE COVENANT RECORDED
 IN INST. No. 2008-017818
 DOUGLAS CO. DEED RECORDS

POWER PUE TABLE

NO.	DIRECTION	DIST.
L93	N 00°00'00" W	222.27 FT
L94	N 01°30'31" E	619.69 FT
L95	N 10°12'34" W	154.82 FT
L96	N 86°22'29" E	273.61 FT
L97	S 84°46'22" W	432.89 FT
L98	S 84°38'07" W	413.38 FT
L99	S 00°47'32" W	276.25 FT
L100	S 02°04'13" W	224.82 FT

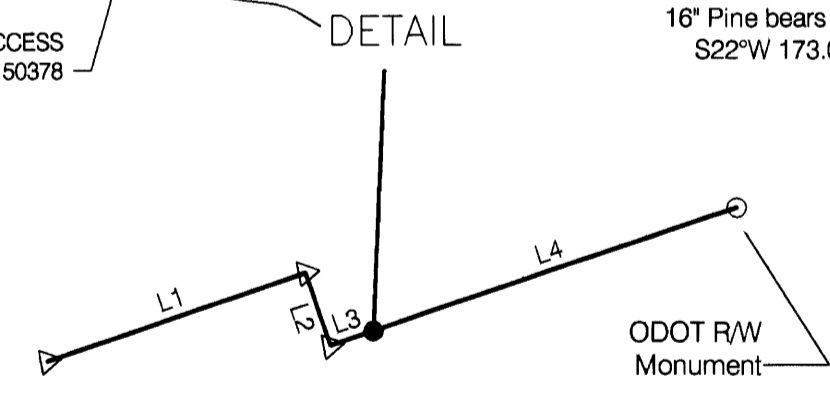
CURVE TABLE
 ACCESS & UTILITY EASEMENT

NO.	DEFLECTION ANGLE	DEGREE OF CURVE - ARC	CHORD DIRECTION	RADIUS	ARC LENGTH	CHORD LENGTH
C1	100°02'45"	114°35'30"	S 33°30'21" W	50.00	87.31	76.63
C2	130°25'00"	22°55'06"	S 50°06'09" W	250.00	569.05	453.92
C3	18°17'57"	57°17'45"	S 73°50'20" E	100.00	31.94	31.80
C4	41°58'14"	57°17'45"	N 62°00'12" W	100.00	73.25	71.63

REGISTERED PROFESSIONAL LAND SURVEYOR

Maurice Farr
 OREGON
 SEPT 23, 1977
 MAURICE E. FARR
 1181
 2008
 EXPIRES 12-31-09

Maurice Farr
 MAURICE E. FARR
 PROFESSIONAL LAND SURVEYOR
 395 NE KIRBY AVENUE
 ROSEBURG, OR 97470



LEGEND

- ⊙ FND DCSO IP/BRASS CAP 1/4 COR
- FND 5/8" IR OR AS SHOWN
- ▽ COMPUTED LOCATION, NO MONUMENT SET
- SET 5/8" X 30" I.R. WITH PLASTIC CAP MARKED M.E. FARR LS 1181
- P.U.E PUBLIC UTILITY EASEMENT

2008-0075 A

2008-0075 A