

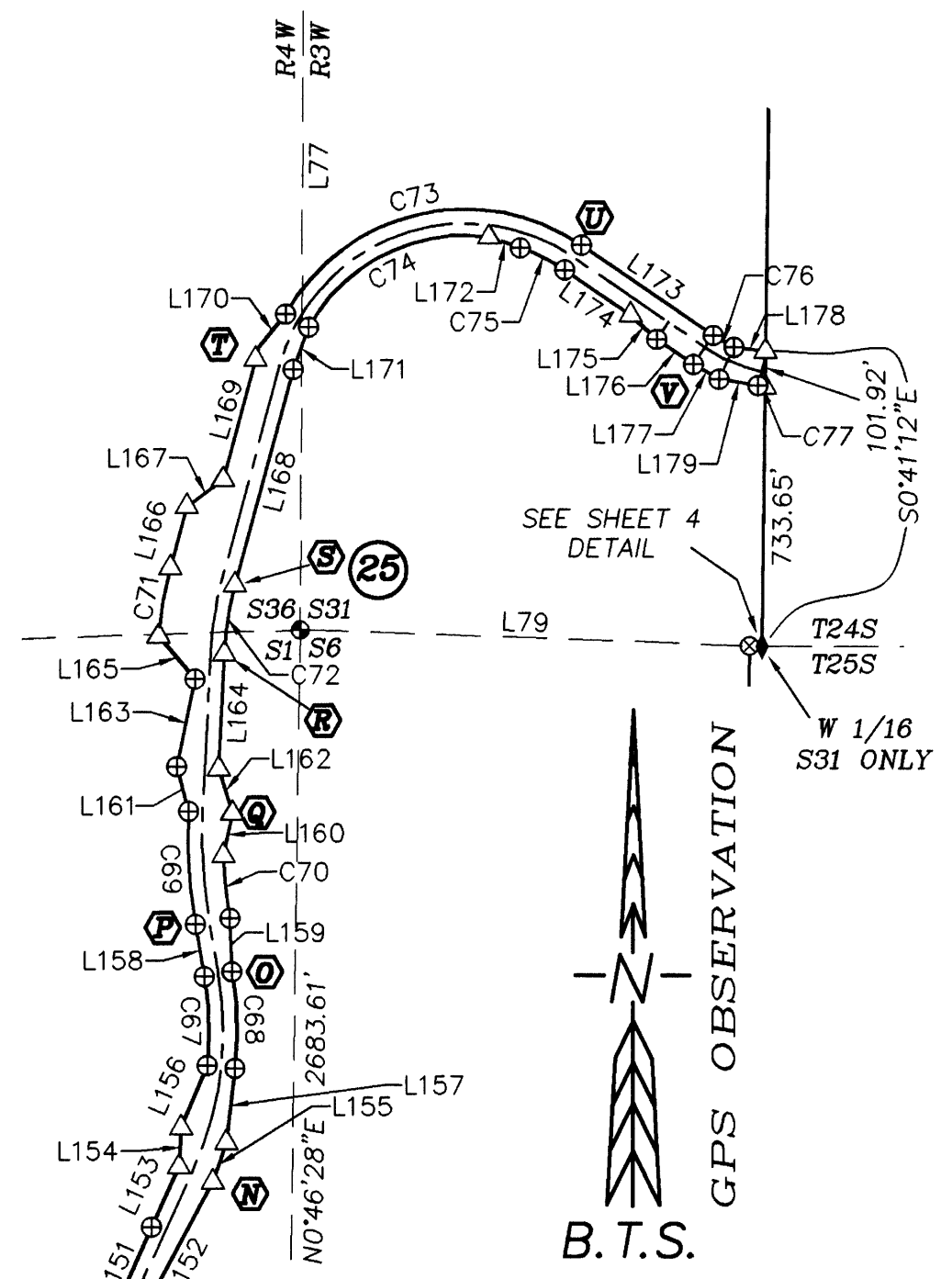
2008-0061F

PARTITION PLAT

LOCATED IN
T.24S., R.3W., W.M. SECTION 31
T.24S., R.4W., W.M. SECTION 36
T.25S., R.4W., W.M. SECTION 1 & 2

NO.	DELTA	RADIUS	ARC	BEARING	CHORD	NO.	DIRECTION	LENGTH	NO.	DIRECTION	LENGTH
C47	3° 55' 03"	1308.24	89.45	N87° 49' 48"W	89.43	L125	N89° 48' 28"W	643.41	L154	N2° 54' 30"E	109.93
C48	6° 28' 07"	1237.95	139.76	N86° 33' 38"W	139.69	L126	N89° 49' 13"W	643.37	L155	S19° 01' 12"W	118.22
C49	10° 36' 23"	1308.24	242.18	N80° 34' 06"W	241.83	L127	N57° 52' 58"W	851.28	L156	N22° 45' 56"E	190.96
C50	25° 26' 30"	1237.95	549.70	N70° 36' 20"W	545.20	L128	N57° 52' 55"W	851.29	L157	S6° 42' 20"W	211.20
C51	17° 22' 46"	1308.24	396.83	N66° 34' 31"W	395.31	L129	S68° 10' 06"W	276.25	L158	N9° 34' 26"W	150.17
C52	53° 52' 30"	537.96	505.84	N84° 47' 05"W	487.41	L130	S69° 44' 34"W	181.67	L159	S2° 05' 35"E	151.57
C53	53° 52' 18"	608.05	571.71	N84° 47' 16"W	550.88	L131	S62° 15' 48"W	95.15	L160	S12° 05' 51"W	121.84
C54	18° 24' 01"	1415.88	454.70	S59° 11' 13"W	452.75	L132	S59° 53' 58"W	310.70	L161	N14° 59' 48"W	130.52
C55	17° 46' 45"	1387.39	430.51	S46° 35' 59"W	428.79	L133	S47° 31' 37"W	225.05	L162	S17° 07' 17"E	132.19
C56	7° 23' 59"	1134.22	146.48	S34° 40' 59"W	146.38	L134	S33° 33' 25"W	279.72	L163	N11° 50' 16"E	253.19
C57	10° 01' 33"	1466.28	256.57	S36° 36' 25"W	256.25	L135	S31° 30' 28"W	863.46	L164	S2° 46' 54"W	325.63
C58	16° 58' 00"	848.02	251.12	S39° 59' 23"W	250.20	L136	S31° 30' 30"W	1143.02	L165	N40° 41' 49"W	158.86
C59	16° 45' 30"	788.49	230.62	S39° 56' 23"W	229.80	L137	S48° 28' 18"W	345.17	L166	N15° 06' 27"E	179.81
C60	42° 51' 24"	921.49	689.26	S70° 01' 21"W	673.31	L138	S48° 24' 22"W	732.12	L167	N53° 46' 03"E	128.06
C61	42° 48' 45"	851.85	636.52	S70° 01' 59"W	621.81	L139	S46° 18' 22"W	150.29	L168	S15° 06' 19"W	632.30
C62	44° 56' 59"	907.10	711.64	S59° 39' 53"E	693.53	L140	S49° 36' 54"W	236.96	L169	N15° 06' 27"E	390.00
C63	46° 11' 10"	825.62	665.53	N59° 38' 59"W	647.66	L141	S82° 32' 37"E	103.59	L170	N39° 05' 31"E	118.75
C64	22° 30' 28"	558.07	219.23	S48° 37' 38"E	217.82	L142	N88° 21' 24"W	96.64	L171	S20° 02' 24"W	126.93
C65	85° 47' 36"	567.83	850.26	N67° 36' 20"E	773.02	L143	S40° 49' 09"E	162.35	L172	N70° 58' 01"W	93.14
C66	117° 54' 15"	638.13	1313.16	S83° 43' 33"W	1093.43	L144	S37° 15' 53"E	399.71	L173	S55° 49' 21"E	452.21
C67	15° 24' 50"	937.03	252.08	N1° 52' 17"W	251.32	L145	S40° 02' 11"E	199.94	L174	N55° 49' 21"W	226.30
C68	15° 42' 27"	999.93	274.13	S1° 48' 41"E	273.27	L146	N37° 04' 00"W	1322.30	L175	N47° 17' 30"W	101.12
C69	12° 29' 40"	1472.04	321.01	N3° 31' 40"W	320.37	L147	S37° 19' 55"E	560.76	L176	N55° 48' 57"W	125.93
C70	7° 27' 22"	1372.48	178.60	S5° 56' 38"E	178.48	L148	S55° 36' 07"E	93.99	L177	N60° 01' 38"W	83.32
C71	9° 57' 45"	1132.58	196.93	N9° 46' 14"E	196.68	L149	N24° 44' 37"E	496.44	L178	S83° 04' 28"E	89.87
C72	11° 57' 19"	942.58	196.68	S8° 45' 33"W	196.32	L150	S24° 44' 22"W	496.45	L179	N80° 52' 35"W	112.00
C73	94° 49' 10"	585.68	969.25	N76° 51' 41"E	862.37	L151	N23° 48' 08"E	300.91			
C74	68° 12' 07"	510.68	607.89	S63° 32' 51"W	572.63	L152	S28° 14' 57"W	490.26			
C75	16° 07' 55"	500.66	140.96	N63° 46' 32"W	140.50	L153	N24° 43' 20"E	188.40			
C76	8° 52' 37"	437.47	67.78	S60° 06' 07"E	67.71						
C77	2° 17' 06"	517.50	20.64	S77° 42' 42"E	20.64						

- 1968 NON-PARIEL ROAD STATIONING
- A** STA = 45+50.00
 - B** PC = 51+93.32
 - C** PT = 59+02.49 BK.
POT = 58+87.53 AH.
 - D** PC = 67+39.21
 - E** PT = 72+78.50
 - F** PC = 75+54.74
 - G** PT = 84+70.36
 - H** PC = 96+13.74
 - I** PT = 98+54.77
 - J** PC = 105+86.89
 - K** PT = 120+38.00
 - L** PC = 133+61.09
 - M** PT = 146+03.35
 - N** PC = 155+89.10
 - O** PT = 161+62.98
 - P** PC = 163+13.37
 - Q** PT = 166+25.65
 - R** PC = 170+75.57
 - S** PT = 172+81.12
 - T** PC = 179+13.42
 - U** PT = 189+53.37 BK.
POT = 189+73.67 AH.
 - V** PC = 194+25.92

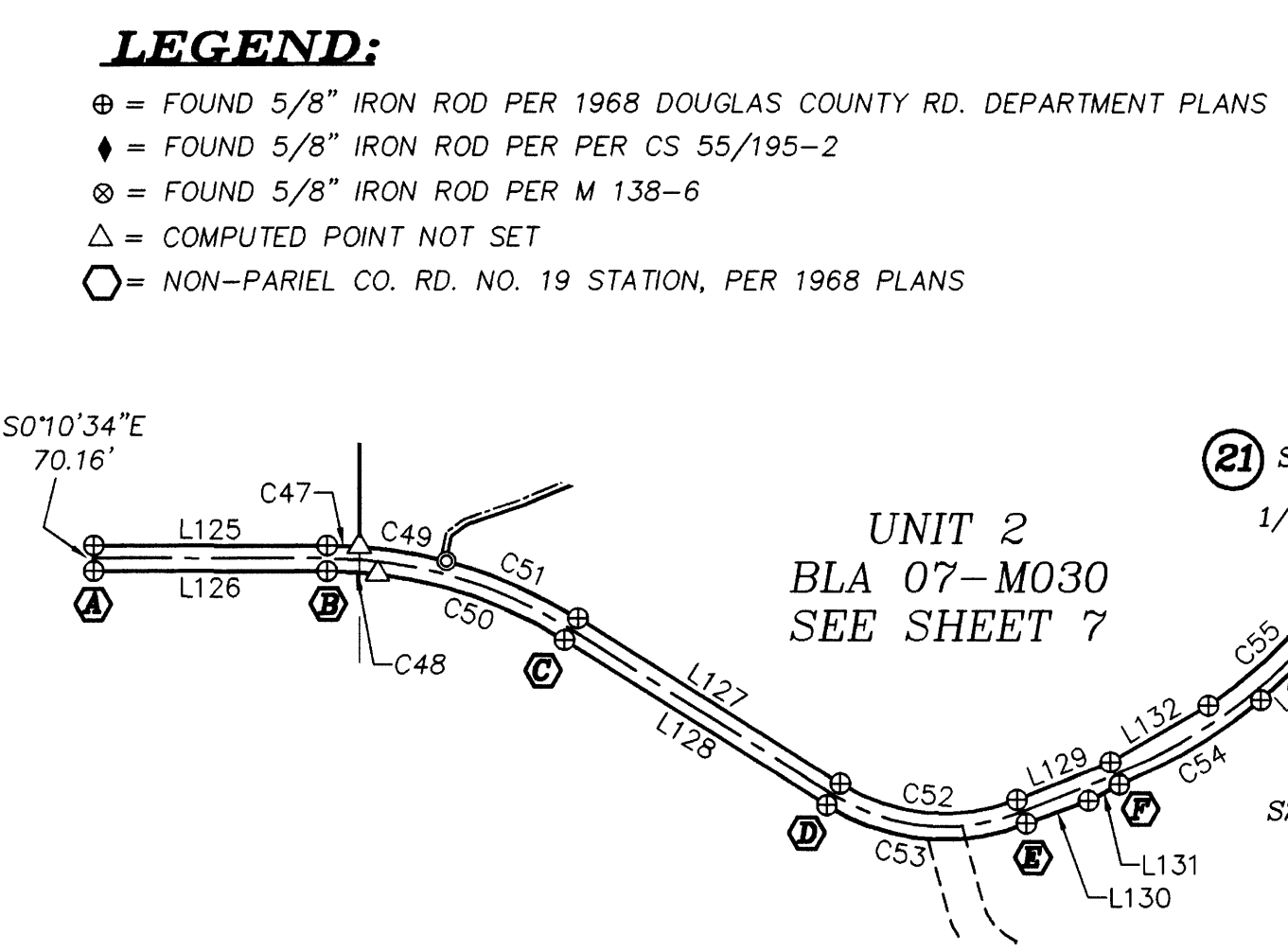


PARCEL 1
919.56 AC. ±
SEE SHEET 3

PARCEL 2
966.10 AC. ±
SEE SHEET 4

PARCEL 3
930.60 AC. ±
SEE SHEET 5

UNIT 2
BLA 07-M030
SEE SHEET 7



REGISTERED PROFESSIONAL LAND SURVEYOR
Kristian O. Degroot
OREGON JULY 17, 1981
KRISTIAN O. DEGROOT 1941
RENEWAL DATE: 12-31-09

BTS ENGINEERING & SURVEYING, INC.
431 S.E. MAIN ST., ROSEBURG, OR 97470
PHONE (541) 673-0966 FAX (541) 673-0105

SCALE: 1" = 500'
DATE: AUGUST 8, 2008

FOR: DOUGLAS COUNTY INC.
PO BOX 848
WINCHESTER, OR 97495

JOB #: 04-119
FILE: 04-119 Hunt Ranch LP09.DWG
SHEET 6 OF 7

2008-0061F