

LAND PARTITION PLAT
 LOCATED IN
 NW1/4 AND NE1/4 SECTION 5
 T30S, R5W, W.M.
 CITY OF MYRTLE CREEK
 DOUGLAS COUNTY, OREGON
 FOR
 WEST PROPERTIES II, INC.
 BY
 ROBERTS SURVEYING INC.
 P.O. BOX 7155
 EUGENE, OREGON 97401
 PHONE (541) 345-1112

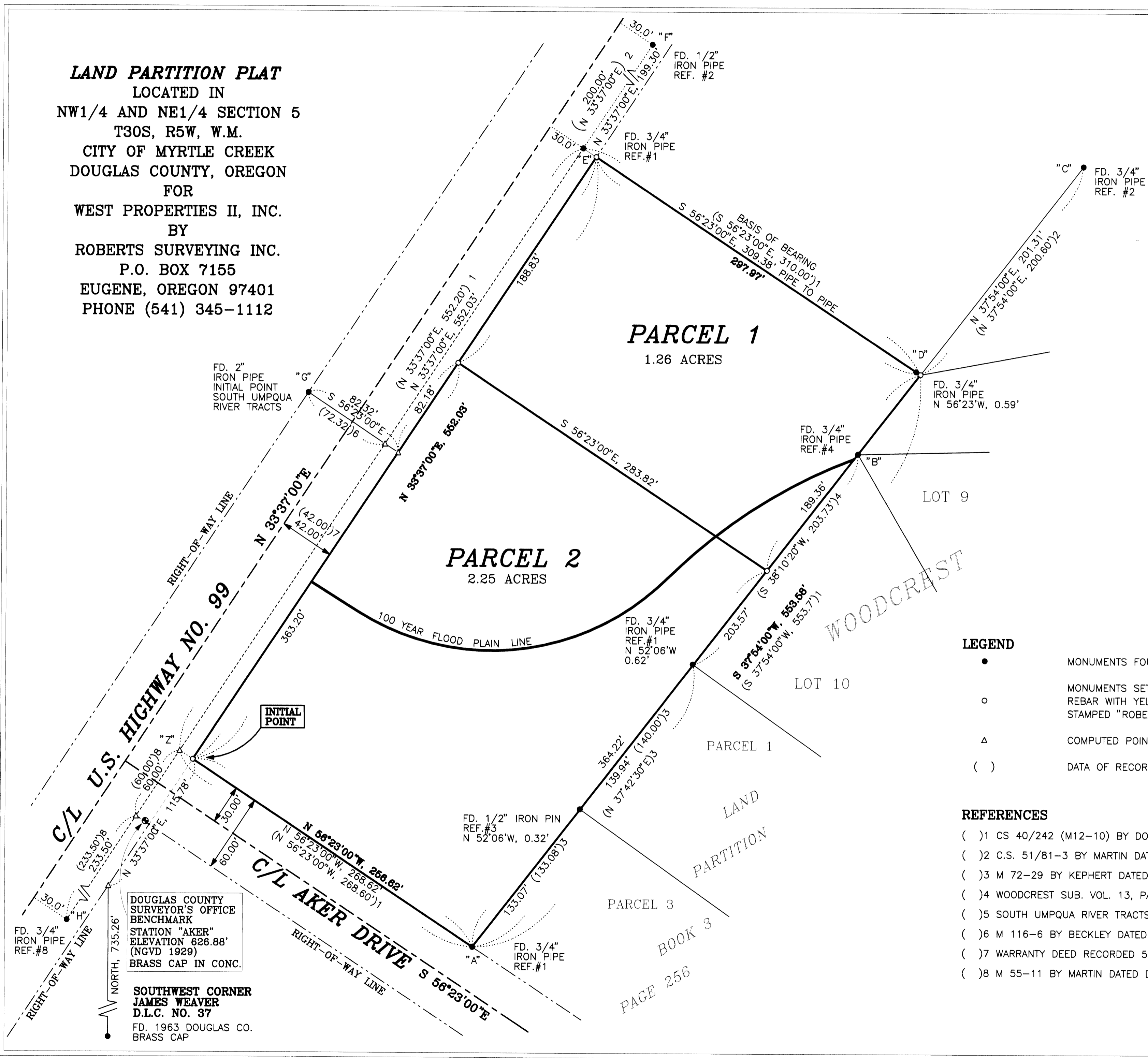
DOUGLAS COUNTY OFFICIAL RECORDS
 BARBARA E. NIELSEN, COUNTY CLERK
 2007-025971
 NO FEE
 00204095200700259710020027
 12/11/2007 11:42:11 AM
 PLAT-PAR Cnt=1 Stn=1 RECEIPTCOUNTER
 This is a no fee document

2007-0171A



SCALE: 1" = 50'
 NOVEMBER 26, 2007

REGISTERED
 PROFESSIONAL
 LAND SURVEYOR
Ted C. Baker
 OREGON
 JULY 25, 1991
 TED C. BAKER
 2488
 EXPIRES 12-31-09



- LEGEND**
- MONUMENTS FOUND AS NOTED
 - MONUMENTS SET: 5/8" X 30" IRON REBAR WITH YELLOW PLASTIC CAPS STAMPED "ROBERTS SURV. INC."
 - △ COMPUTED POINT
 - () DATA OF RECORD

- REFERENCES**
- () 1 CS 40/242 (M12-10) BY DOW DATED JUNE, 1950
 - () 2 C.S. 51/81-3 BY MARTIN DATED NOVEMBER 1959
 - () 3 M 72-29 BY KEPHERT DATED JULY 1978
 - () 4 WOODCREST SUB. VOL. 13, PAGE 11 BY MARTIN DATED JULY 1966
 - () 5 SOUTH UMPQUA RIVER TRACTS, VOL. 8, PAGE 45 BY DOW DATED JULY 1949
 - () 6 M 116-6 BY BECKLEY DATED OCTOBER, 1992
 - () 7 WARRANTY DEED RECORDED 5-07-2003, RECEPTION NO. 2003-012244
 - () 8 M 55-11 BY MARTIN DATED DECEMBER, 1974

2007-0171A

LAND PARTITION
 BOOK 3
 PAGE 256