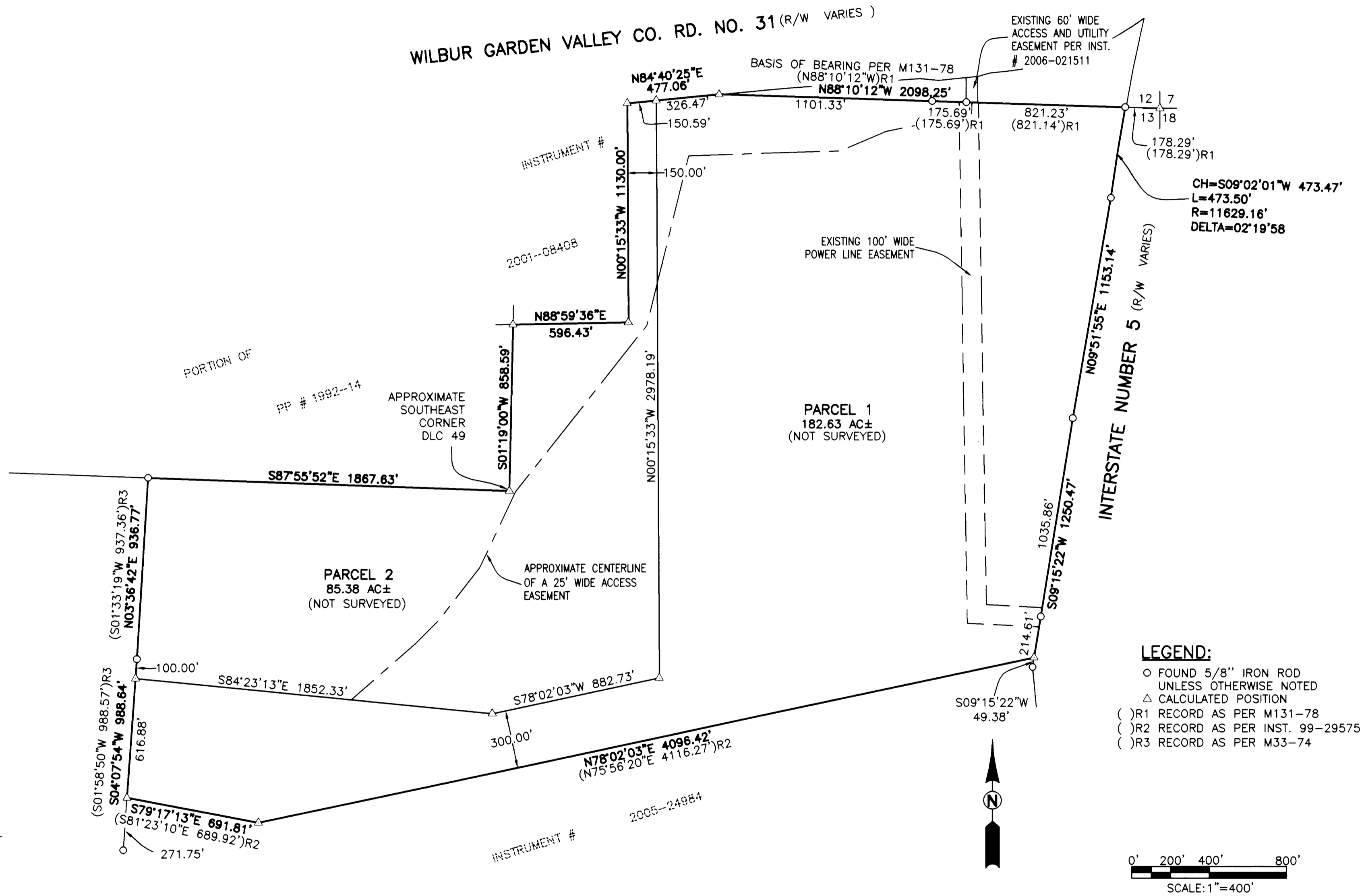


2007-0127 A

2007-0127 A



<p><b>REGISTERED PROFESSIONAL LAND SURVEYOR</b></p> <p><i>Ronald A. Gumbly</i></p> <p><b>OREGON</b> JULY 14, 1978 <b>RONALD A. GUMBLY</b> 1854</p> <p>EXPIRES: 12/31/2008</p>	<p><b>LAND PARTITION</b></p> <p>LYING IN SECTION 13, TOWNSHIP 26 SOUTH, RANGE 6 WEST, WILLAMETTE MERIDIAN, DOUGLAS COUNTY, OREGON</p>	
	<p>SURVEYED FOR:</p> <p>TOM BECKLEY PO BOX 76 WINCHESTER, OR 97470</p>	<p>SURVEYED BY:</p> <p><b>i.e.</b> ENGINEERING</p> <p>505 SE Main Street Roseburg, Oregon 97470 PHONE (541) 673-0166 FAX (541) 440-9392 iemail@ieengineering.com</p>
<p>SCALE: AS SHOWN</p>	<p>JOB NO: 2004-08T4 DATE: APRIL, 2007</p>	<p>DWG. BY: RNP PM: RNP</p>
<p>PAGE: 1 OF 2</p>		