

2007-0083 C

PREPARED FOR:  
NORB WONDRA, REPRESENTATIVE  
INTERNATIONAL PAPER CO.  
P.O. BOX 854, GARDINER OR 97441  
(541) 271-2185

PREPARED BY:  
STUNTZNER ENG. & FORESTRY LLC  
705 S.4TH ST., PO BOX 118,  
COOS BAY, OR 97420

DATE: JUNE 18, 2007

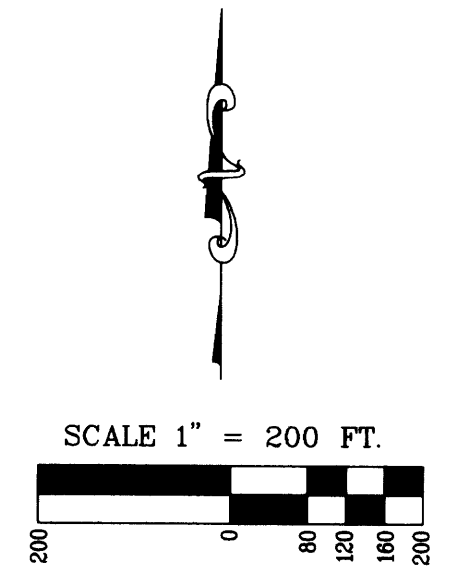
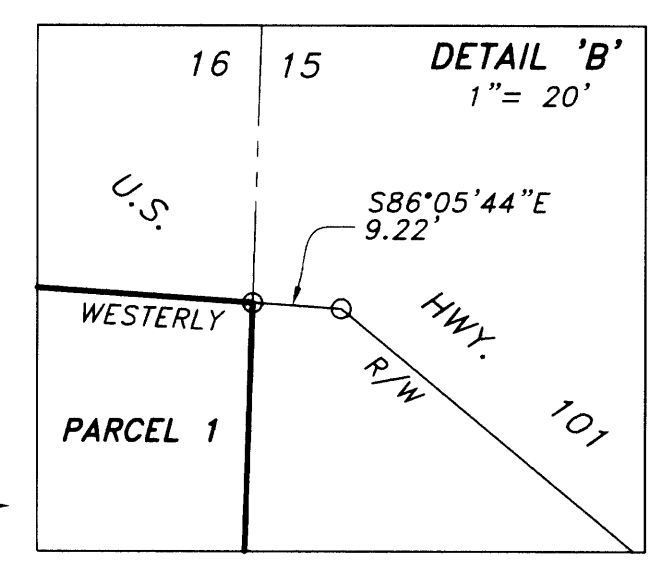
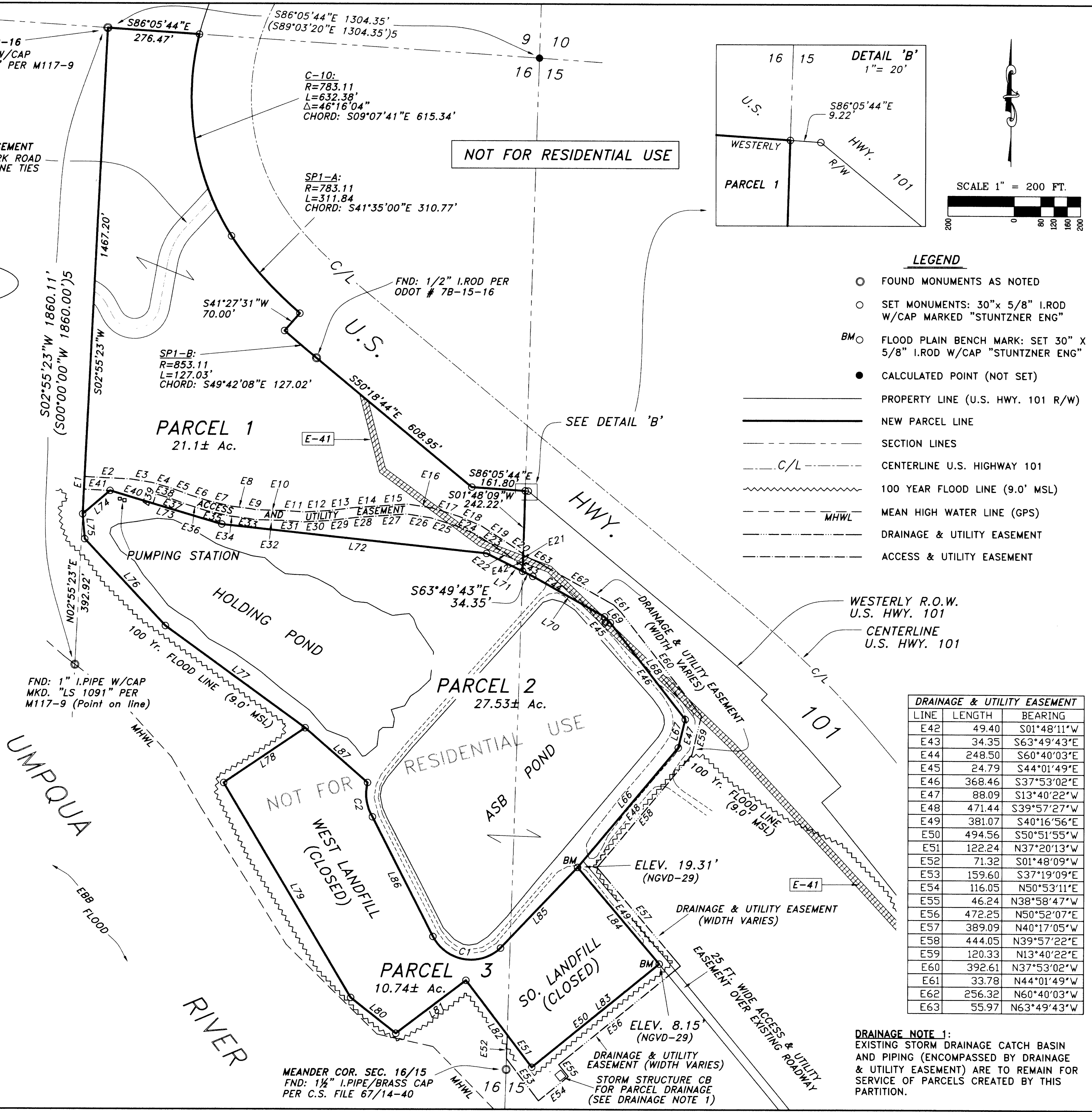
PAGE 3: FINAL PARTITION PLAN OF ADJUSTED  
UNIT OF LAND #1 OF THIS SURVEY

PARENT PARCEL:  
59.37 ACRES±

LINE	LENGTH	BEARING
E1	38.11	N02°55'23"E
E2	138.01	S87°04'37"E
E3	65.38	S81°04'08"E
E4	62.97	S73°47'25"E
E5	57.60	S69°29'13"E
E6	63.03	S72°48'27"E
E7	65.62	S77°09'01"E
E8	63.10	S82°39'34"E
E9	12.60	S77°01'00"E
E10	78.56	S88°33'55"E
E11	66.93	S86°14'50"E
E12	74.11	N86°45'45"E
E13	78.31	N83°09'20"E
E14	79.65	N86°06'27"E
E15	80.19	N85°52'40"E
E16	79.76	S81°12'16"E
E17	82.48	S72°19'07"E
E18	71.37	S67°04'51"E
E19	110.59	S57°14'49"E
E20	42.84	S54°22'25"E
E21	36.11	S01°48'09"W
E22	62.19	N54°22'25"W
E23	107.25	N57°14'49"W
E24	67.41	N67°04'51"W
E25	78.78	N72°19'07"W
E26	74.03	N81°12'16"W
E27	76.86	S85°52'40"W
E28	78.94	S86°06'27"W
E29	78.49	S83°09'20"W
E30	76.88	S86°45'45"W
E31	68.16	N86°14'50"W
E32	80.98	N88°33'55"W
E33	14.15	N77°01'00"W
E34	63.06	N82°39'34"W
E35	68.20	N77°09'01"W
E36	65.03	N72°48'27"W
E37	57.35	N69°29'13"W
E38	39.63	N73°47'25"W
E39	29.94	S18°16'25"W
E40	134.88	N73°23'42"W
E41	78.79	N87°04'37"E

LINE	LENGTH	BEARING
L66	471.47	N39°57'22"E
L67	88.09	N13°40'22"E
L68	368.46	N37°53'02"W
L69	24.79	N44°01'49"W
L70	248.50	N60°40'03"W
L71	121.32	N63°49'43"W
L72	804.03	N83°49'17"W
L73	351.40	N73°23'42"W
L74	108.39	S49°32'50"W
L75	75.21	S04°37'41"E
L76	357.18	S42°56'51"E
L77	522.10	S53°56'40"E
L78	296.58	S55°58'43"W
L79	752.47	S30°44'33"E
L80	173.98	S51°45'46"E
L81	265.01	N52°49'26"E
L82	328.94	S37°19'09"E
L83	494.59	N50°52'07"E
L84	381.09	N40°17'05"W
L85	336.78	N43°34'35"E
L86	404.07	S26°56'37"E
L87	250.80	S48°54'36"E

CURVE	LENGTH	RADIUS	DELTA	CHORD DIR	CHORD L
C1	239.88	129.51	106°07'16"	S80°24'37"E	207.03
C2	107.26	135.24	45°26'20"	S08°12'30"E	104.47



- LEGEND**
- FOUND MONUMENTS AS NOTED
  - SET MONUMENTS: 30"x 5/8" I.ROD W/CAP MARKED "STUNTZNER ENG"
  - BM ○ FLOOD PLAIN BENCH MARK: SET 30" X 5/8" I.ROD W/CAP "STUNTZNER ENG"
  - CALCULATED POINT (NOT SET)
  - PROPERTY LINE (U.S. HWY. 101 R/W)
  - NEW PARCEL LINE
  - SECTION LINES
  - C/L --- CENTERLINE U.S. HIGHWAY 101
  - ~ 100 YEAR FLOOD LINE (9.0' MSL)
  - MHWL --- MEAN HIGH WATER LINE (GPS)
  - DRAINAGE & UTILITY EASEMENT
  - ACCESS & UTILITY EASEMENT

LINE	LENGTH	BEARING
E42	49.40	S01°48'11"W
E43	34.35	S63°49'43"E
E44	248.50	S60°40'03"E
E45	24.79	S44°01'49"E
E46	368.46	S37°53'02"E
E47	88.09	S13°40'22"W
E48	471.44	S39°57'27"W
E49	381.07	S40°16'56"E
E50	494.56	S50°51'55"W
E51	122.24	N37°20'13"W
E52	71.32	S01°48'09"W
E53	159.60	S37°19'09"E
E54	116.05	N50°53'11"E
E55	46.24	N38°58'47"W
E56	472.25	N50°52'07"E
E57	389.09	N40°17'05"W
E58	444.05	N39°57'22"E
E59	120.33	N13°40'22"E
E60	392.61	N37°53'02"W
E61	33.78	N44°01'49"W
E62	256.32	N60°40'03"W
E63	55.97	N63°49'43"W

**DRAINAGE NOTE 1:**  
EXISTING STORM DRAINAGE CATCH BASIN AND PIPING (ENCOMPASSED BY DRAINAGE & UTILITY EASEMENT) ARE TO REMAIN FOR SERVICE OF PARCELS CREATED BY THIS PARTITION.

**Stuntzner Engineering & Forestry, L.L.C.**  
ENGINEERING • LAND SURVEYING • FORESTRY  
PLANNING • WATER RIGHTS

705 South 4th St.  
Post Office Box 118  
Coos Bay, Oregon 97420  
Phone: (541) 267-2872  
Fax: (541) 267-0588

Drawn By: Elvin Stingley Date: JUNE 04, 2007  
Checked By: JLE Drawing No.: 06-423 I.P.  
Designed By: Revised: June 18, 2007  
Job Name: INTL. PAPER CO. FINAL PARTITION Sheet 3 of 5

REGISTERED PROFESSIONAL LAND SURVEYOR

*Jerry Lee Estabrook*

OREGON  
June 30, 1995  
Jerry Lee Estabrook  
2703  
EXPIRES 12/31/2007

MEANDER COR. SEC. 16/15  
FND: 1 1/2" I.P.I.PE/BRASS CAP  
PER C.S. FILE 67/14-40