

PARTITION MAP  
SHEET 1 OF 2  
T.21S. R12W.W.M. SW¼ OF NE¼ SECTION 22  
FOR INTERNATIONAL PAPER  
DOUGLAS COUNTY, OREGON  
SCALE 1" = 500 FT.  
MAY, 2007

OWNER:  
INTERNATIONAL PAPER CO.  
INTERNATIONAL PLACE 1  
6400 POPLAR AVENUE  
MEMPHIS, TN 38197

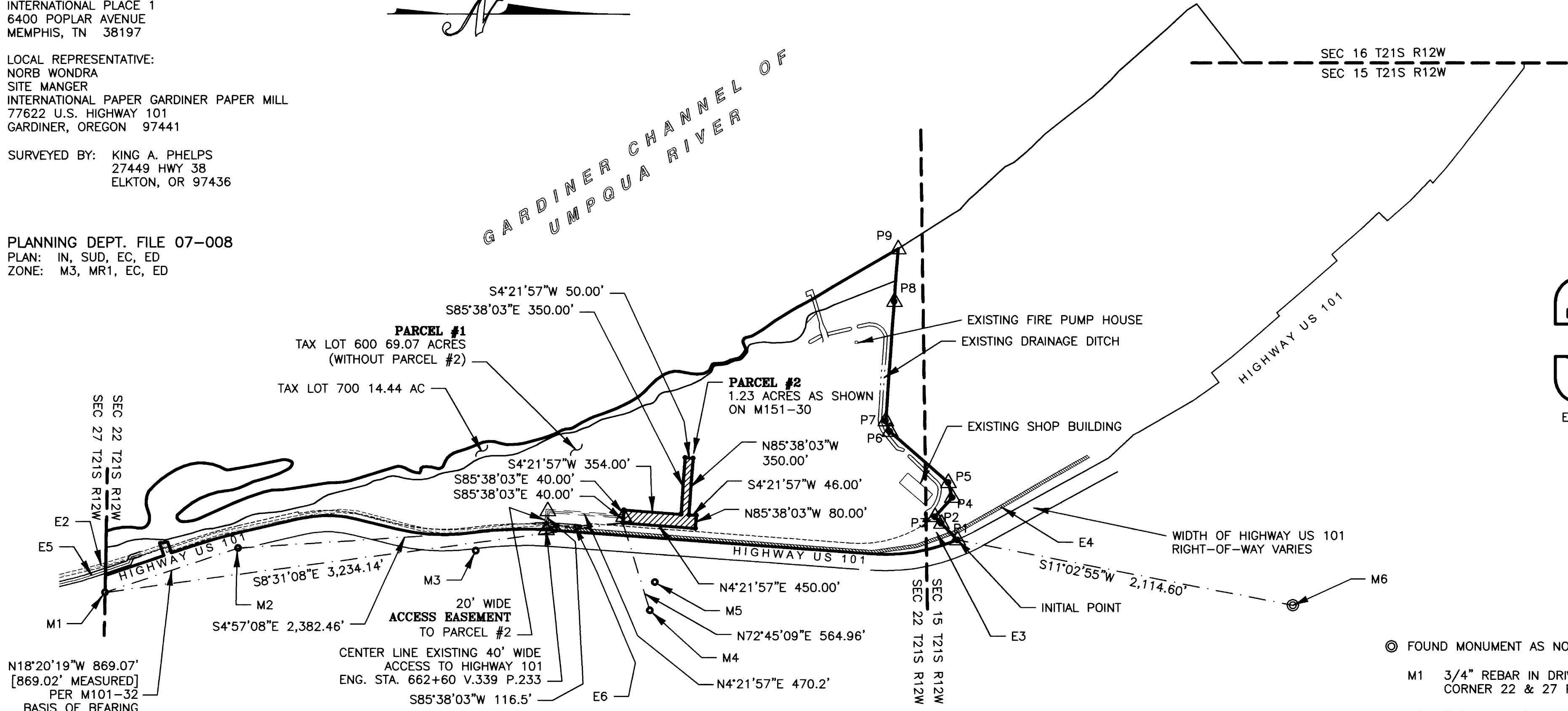
LOCAL REPRESENTATIVE:  
NORB WONDRA  
SITE MANGER  
INTERNATIONAL PAPER GARDINER PAPER MILL  
77622 U.S. HIGHWAY 101  
GARDINER, OREGON 97441

SURVEYED BY: KING A. PHELPS  
27449 HWY 38  
ELKTON, OR 97436

PLANNING DEPT. FILE 07-008  
PLAN: IN, SUD, EC, ED  
ZONE: M3, MR1, EC, ED



GARDINER CHANNEL OF  
UMPQUA RIVER



REGISTERED  
PROFESSIONAL  
LAND SURVEYOR  
*K. Phelps*  
OREGON  
SEPTEMBER 23, 1977  
KING A. PHELPS  
#1298  
EXP. DEC. 31, 2008

N18°20'19"W 869.07'  
[869.02' MEASURED]  
PER M101-32  
BASIS OF BEARING

"NOT FOR RESIDENTIAL USE"

DISTANCE AND BEARING TABLE	
P1 TO P2	S48°22'07"W 144.16'
P2 TO P3	S47°52'16"W 37.73'
P3 TO P4	N76°32'54"W 177.57'
P4 TP P5	S74°23'01"W 95.76'
P5 TO P6	S39°59'07"W 477.98'
P6 TO P7	S67°02'35"W 70.08'
P7 TO P8	N86°55'28"W 739.89'
P8 TO P9	N86°55'28"W TO LOW WATER MARK

- EXISTING EASEMENTS AFFECTING TAX LOT 600:
- E1 RAILROAD RIGHT-OF-WAY: VOL. 224 PAGE 351
  - E2 UTILITY PURPOSES: VOL. 610 PAGE 1030
  - E3 RAILROAD RIGHT-OF-WAY: VOL. 1025 PAGE 642
  - E4 OVERHEAD AND UNDERGROUND POWER LINES: VOL. 1673 PAGE 466
  - E5 WATER LINES: REC. NO. 2003-019229
  - E6 SLOPE EASEMENT: ODOT HIGHWAY MAP 7B-15-16

- © FOUND MONUMENT AS NOTED
- M1 3/4" REBAR IN DRIVEWAY MEANDER CORNER 22 & 27 PER M101-32
- M2 TACK IN LEAD PER M101-32
- M3 DOUGLAS COUNTY SURVEYOR BENCH MARK "GARD-3 2003" ELEVATION = 9.33'
- M4 1" BRASS PLUG NE INTERIOR "L" CORNER A. C. GIBBS DLC #37 MARKED "DLC 37 L" PER M101-32
- M5 DOUGLAS COUNTY SURVEYOR BENCH MARK "GARD-4 2003" ELEVATION = 9.47'
- M6 NNE CORNER A.C. GIBBS DLC #37 3/4" IRON PIPE
- ▲ 5/8" X 30" IRON ROD W/ PLASTIC CAP "LS 1091" PER M123-71
- 5/8" X 30" IRON ROD W/ PLASTIC CAP "PHELPS LS 1298" PER M151-30
- △ POINT CALCULATED NOT SET

