

PROPERTY LINE ADJUSTMENT AND
LAND PARTITION

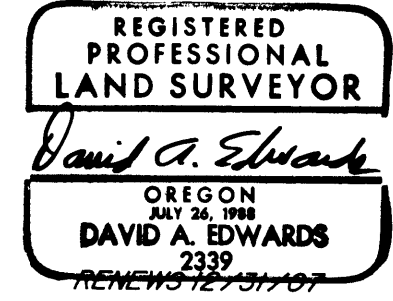
LOCATED in Lots 4 and 5 of 2nd ADDITION TO BRIGGS ACRES and in the SW 1/4
 of Section 33, T. 29 S., R. 5 W., W.M. in Douglas County, Oregon.

November 15, 2006

APPROVALS

SURVEYED FOR: *BTL PROPERTIES, LLC*
 11627 SEMINOLE CIRCLE
 NORTHRIDGE, CA. 91326

SURVEYED BY: *DAVID EDWARDS LAND SURVEYING*
 P.O. BOX 361
 OAKLAND, OREGON 97462
 PHONE: (541) 459-0512



Keith L. Cubie 2/27/07
 DOUGLAS COUNTY PLANNING DIRECTOR DATE

Russell Wilson 2-28-07
 DOUGLAS COUNTY SURVEYOR DATE

FILED THIS 5th DAY OF MARCH, 2007
 AT 2:09 O'CLOCK P.M. 2007-005493

I HEREBY CERTIFY THAT ALL TAXES AND SPECIAL
 ASSESSMENTS OR OTHER CHARGES REQUIRED
 BY LAW HAVE BEEN PAID.

Barbara E. Nielsen
 DOUGLAS COUNTY CLERK
Deputy

Sandra K. Conner 3/5/07
 DOUGLAS COUNTY TAX COLLECTOR DATE

SURVEYOR'S CERTIFICATE

I, DAVID A. EDWARDS, HEREBY CERTIFY THAT I HAVE CORRECTLY SURVEYED AND MARKED WITH PROPER MONUMENTS THE LANDS REPRESENTED HEREON AND THAT THE FOLLOWING IS AN ACCURATE DESCRIPTION OF SAID LANDS:
 THAT TRACT OF LAND DESCRIBED IN DOCUMENT NUMBER 2006-013456, OFFICIAL RECORDS FOR DOUGLAS COUNTY, OREGON.

David A. Edwards
 DAVID A. EDWARDS- P.L.S. 2339

LEGEND

- INDICATES 5/8" DIAM. IRON ROD FD. PER PARTITION PLAT NO. 2006-0037 EXCEPT WHERE NOTED.
 - INDICATES 5/8" X 30" STEEL REBAR W/RED PLASTIC CAP MKD. "D.A. EDWARDS-LS 2339" SET.
 - () DENOTES RECORD DATA PER PLAT OF 2ND ADD. TO BRIGGS ACRES UNLESS NOTED OTHERWISE.
 - X—X—X FENCE LINE SCALE: 1" = 30' P.P. = PARTITION PLAT
- BASIS OF BEARINGS: PARTITION PLAT NUMBER 2006-0037 AS SHOWN.

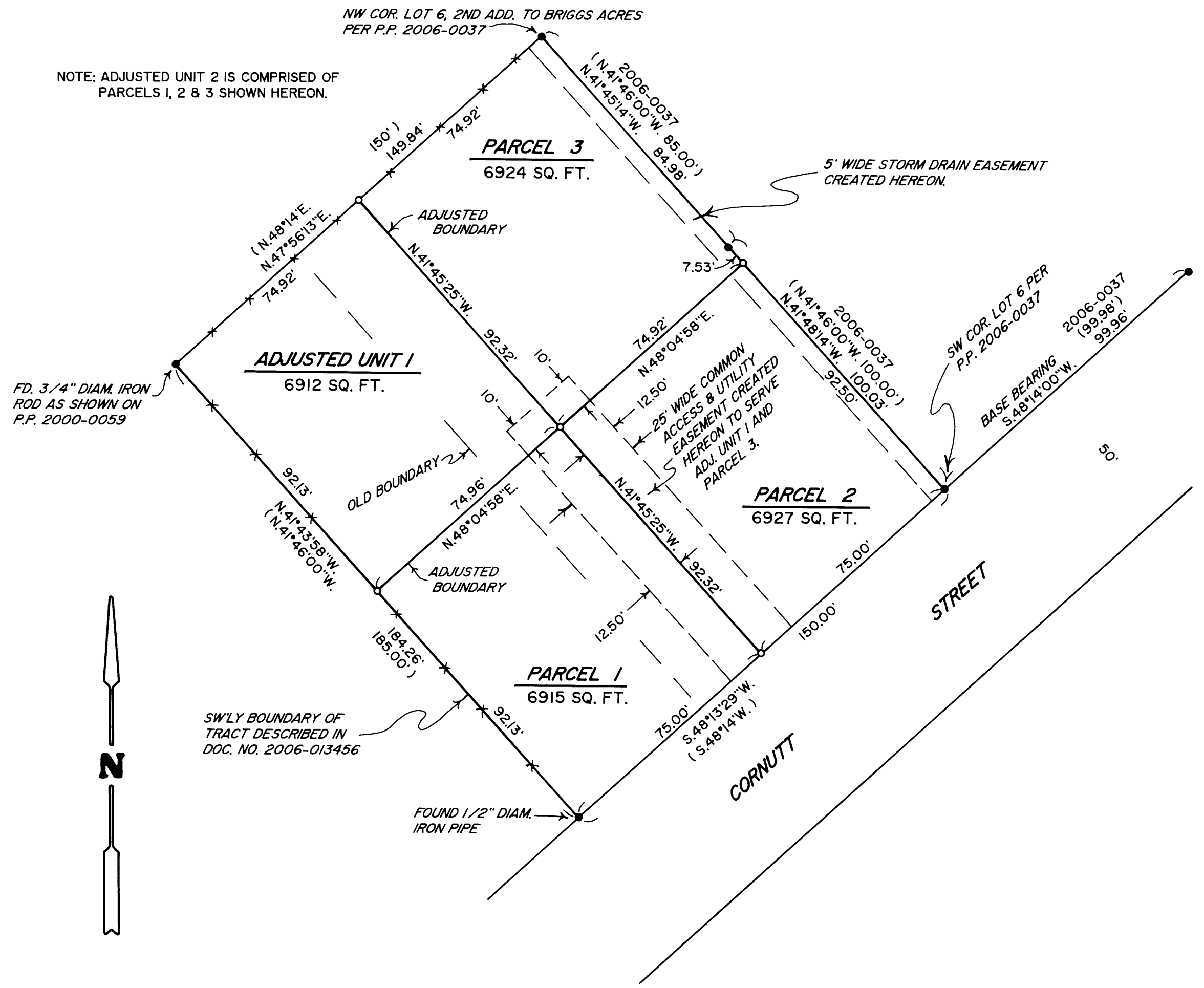
DECLARATION

KNOW ALL PERSONS BY THESE PRESENTS THAT BTL PROPERTIES LLC IS THE OWNER OF THE LANDS REPRESENTED HEREON AND HAS CAUSED THE BOUNDARIES OF SAME TO BE ADJUSTED AND THE SAME TO BE PARTITIONED INTO PARCELS AND EASEMENTS AS SHOWN HEREON.
 SEE DOCUMENT NUMBER 2007-005492, OFFICIAL RECORDS FOR AFFIDAVIT OF BTL PROPERTIES LLC CONSENTING TO THIS PROPERTY LINE ADJUSTMENT AND LAND PARTITION.

NARRATIVE

THE PURPOSE OF THIS SURVEY IS TO SHOW THE ADJUSTMENT OF BOUNDARIES AND THE PARTITIONING OF THE BTL PROPERTIES LLC TRACT. I HOLD TO THE FOUND MONUMENTS AS SHOWN FOR THE EXTERIOR BOUNDARY.
 FIELD CREW: BRANT MILLER AND ERIC SPRINKLE.
 EQUIPMENT: NIKON TOTAL STATION.
 COMPS. AND DRAFTING: DAVID EDWARDS.

SEWER: TRI-CITY WATER AND SEWER DIST. WATER: TRI-CITY WATER AND SEWER DISTRICT
 COMP. PLAN: RMD AND RHD ZONING: R-1 AND R-2
 PLANNING DEPT. FILE NUMBER: 06-185



NOTE: ADJUSTED UNIT 2 IS COMPRISED OF PARCELS 1, 2 & 3 SHOWN HEREON.

2007-0030

2007-0030