

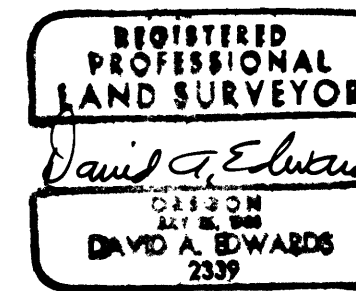
LAND PARTITION

LOCATED in Sections 14 & 15, T. 26 S., R. 6 W., W.M. in
Douglas County, Oregon.

August 26, 2004

SURVEYED FOR: *DON RENEAU*
1122 GARDEN VALLEY ROAD
ROSEBURG, OREGON

SURVEYED BY: *DAVID EDWARDS LAND SURVEYING*
P.O. BOX 361
OAKLAND, OREGON 97462
PHONE: (541) 459-0512



LEGEND

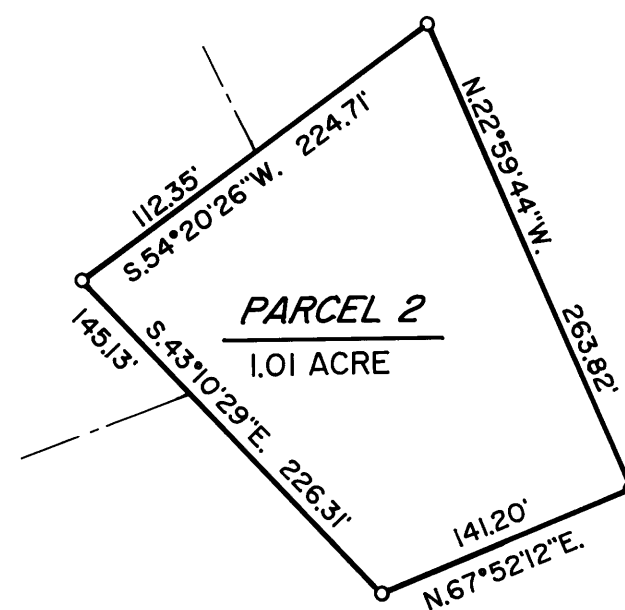
○ INDICATES 5/8" X 30" STEEL REBAR W/RED PLASTIC CAP
MKD. "D.A. EDWARDS-LS 2339" SET.

△ = WELL

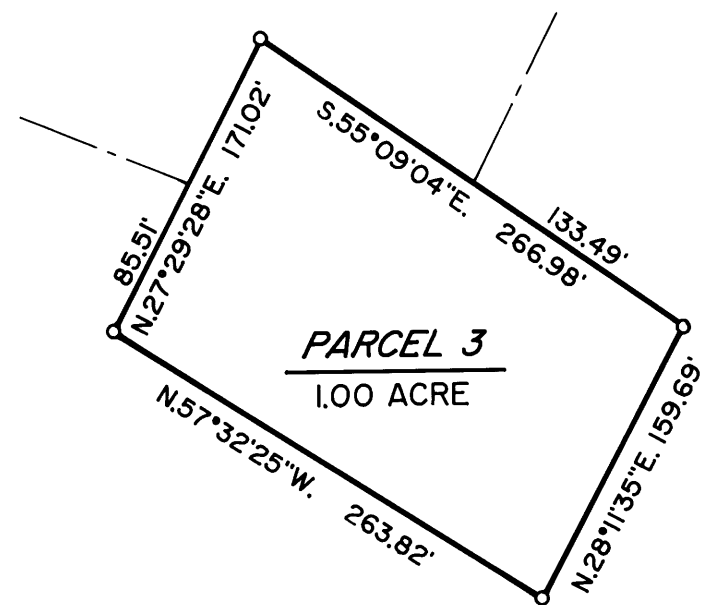
SCALE: 1" = 400'

SCALE OF DETAILS: 1" = 100'

BASIS OF BEARINGS: EXISTING CONTROL PER M 126-9.

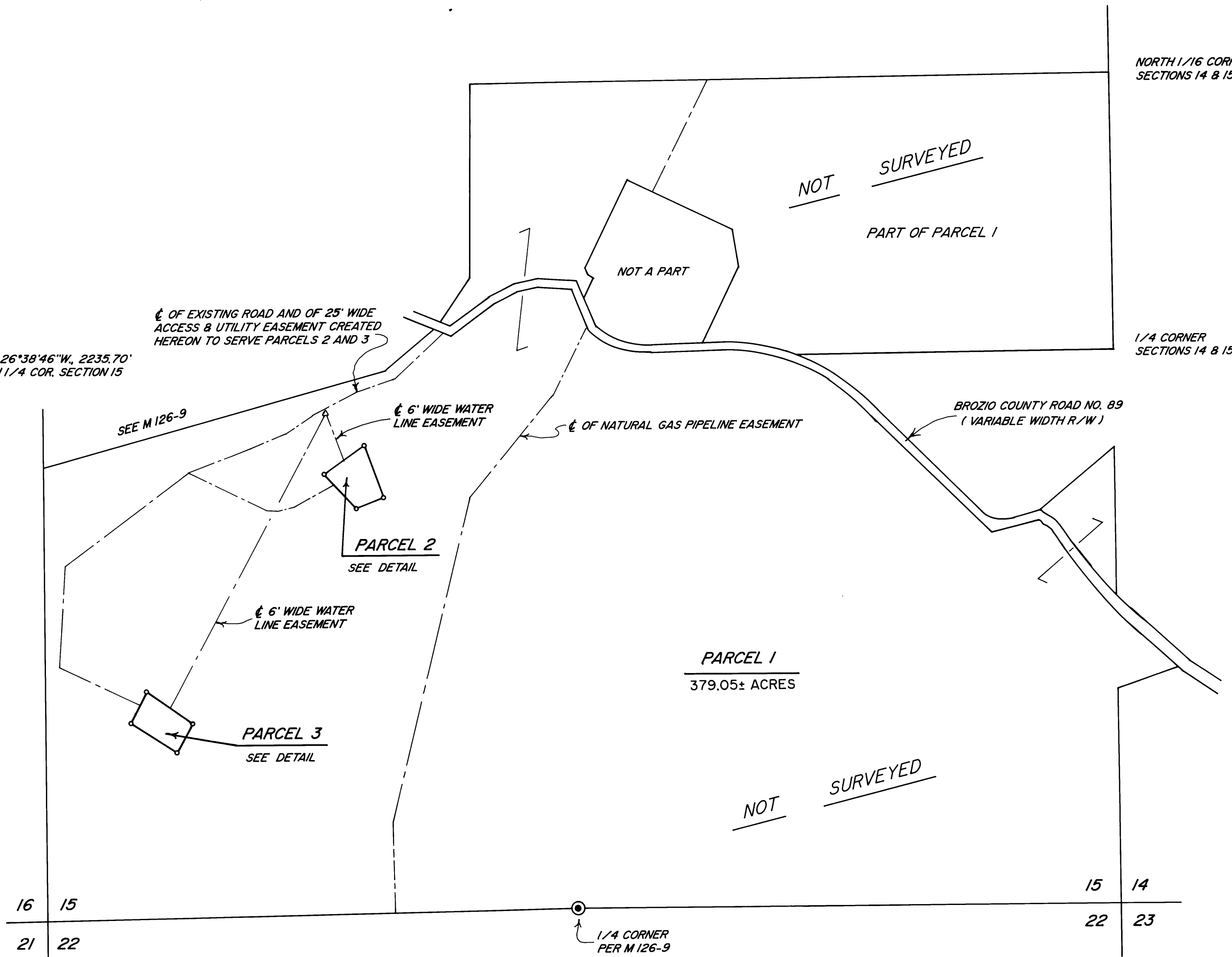


DETAILS



PIN BEARS N.68°49'05"W, 214.89'
FROM SOUTH 1/4 COR. SECTION 15

PIN BEARS N.26°38'46"W, 2235.70'
FROM SOUTH 1/4 COR. SECTION 15



NORTH 1/16 CORNER
SECTIONS 14 & 15

1/4 CORNER
SECTIONS 14 & 15

1/4 CORNER
PER M 126-9

2005-0008 B

2005-0008 B