

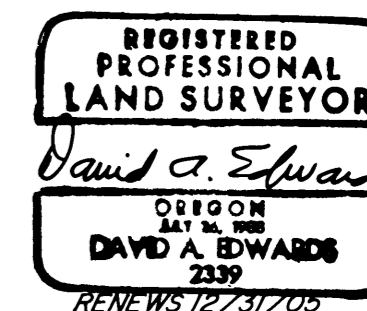
# LAND PARTITION

LOCATED in Sections 5, 6, 7 and 8, T. 27 S., R. 6 W., W.M in Douglas County, Oregon.

October 10, 2004

SURVEYED FOR: *TBT PROPERTIES LLC*  
P.O. BOX 2790  
WINSTON, OREGON 97496

SURVEYED BY: *DAVID EDWARDS LAND SURVEYING*  
P.O. BOX 361  
OAKLAND, OREGON 97462  
PHONE: (541) 459-0512



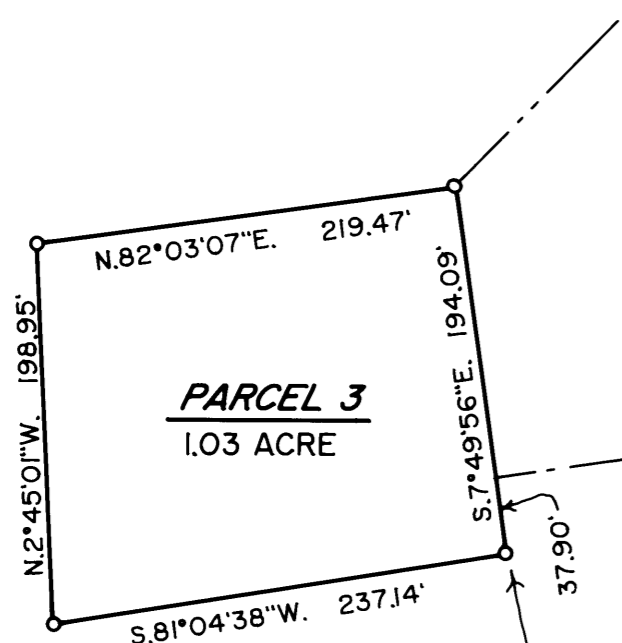
### LEGEND

- INDICATES 5/8" DIAM. REBAR W/ALUM. CAP R/W MONUMENT FOUND.
- INDICATES 5/8" DIAM. REBAR WITH CAP FOUND PER M 131-26.
- INDICATES 1 7/8" DIAM. STEEL SHAFT FOUND AT SW CORNER D.L.C. NO. 59.
- INDICATES 5/8" X 30" STEEL REBAR W/RED PLASIC CAP MKD. "D.A. EDWARDS-LS 2339" SET.

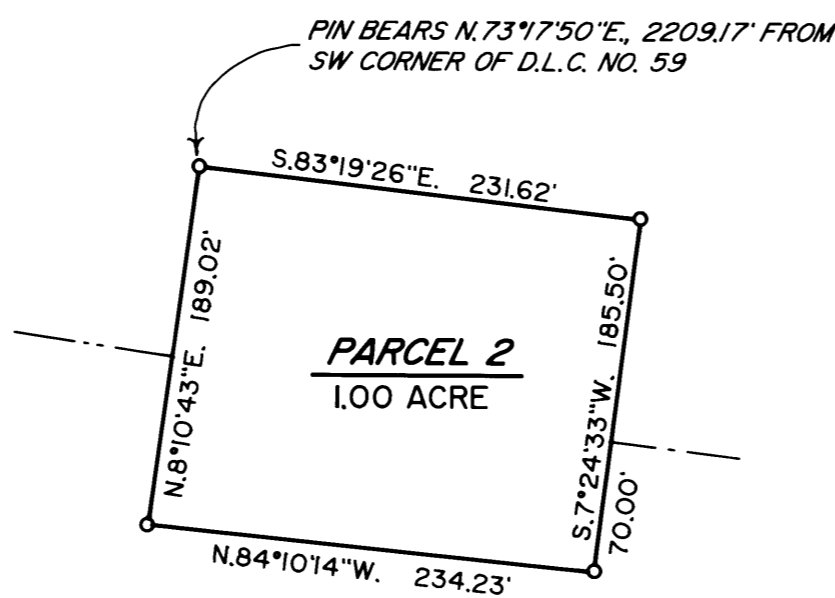
SCALE: 1" = 300'

BASIS OF BEARINGS: M 131-26 AS SHOWN.

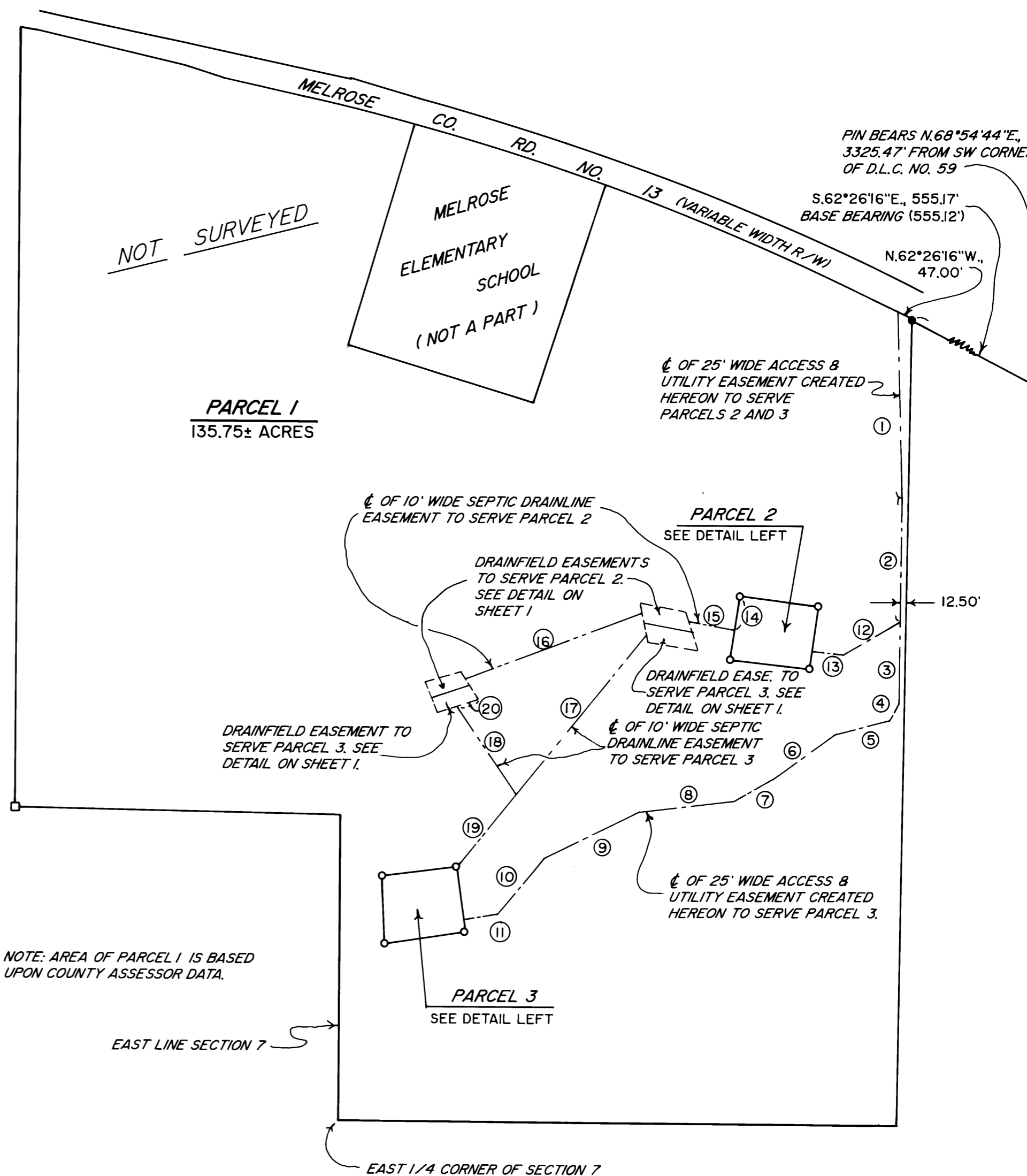
LINE	TABLE
① S.2°39'52"E. 547.24'	⑭ S.8°10'43"W. 101.42'
2 S.0°24'24"W. 372.00'	15 N.79°56'37"W. 139.00'
3 S.0°24'24"W. 228.00'	16 S.68°55'57"W. 551.28'
4 S.31°48'16"W. 62.48'	17 N.38°37'48"E. 597.94'
5 S.74°45'38"W. 167.07'	18 N.35°00'00"W. 307.39'
6 S.53°25'20"W. 221.39'	19 N.38°37'48"E. 275.81'
7 S.60°22'07"W. 131.85'	20 N.70°43'56"E. 64.00'
8 S.82°57'24"W. 279.01'	
9 S.63°18'13"W. 309.13'	
10 S.39°31'43"W. 211.47'	
11 S.79°45'21"W. 92.55'	
12 S.61°00'04"W. 161.92'	
13 N.82°35'27"W. 120.00'	



PIN BEARS S.74°56'25"E. 1370.89' FROM SW CORNER OF D.L.C. NO. 59



DETAILS SCALE: 1" = 100'



NOTE: AREA OF PARCEL 1 IS BASED UPON COUNTY ASSESSOR DATA.

EAST LINE SECTION 7

EAST 1/4 CORNER OF SECTION 7

2004-0062 B

2004-0062 B