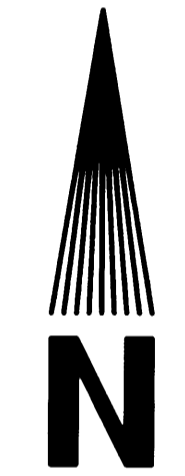


LAND PARTITION PLAT
 LOCATED IN
 NW1/4 SECTION 4, T22S, R5W, W.M.
 DOUGLAS COUNTY, OREGON
 FOR
 NATHAN AND GINA NASH
 BY
 ROBERTS SURVEYING INC.
 P.O. BOX 7155
 EUGENE, OREGON 97401
 PHONE (541) 345-1112
 APRIL 1, 2004

REGISTERED
 PROFESSIONAL
 LAND SURVEYOR
Ted C. Baker
 OREGON
 JULY 25, 1991
 TED C. BAKER
 2488
 EXPIRES 12-31-05



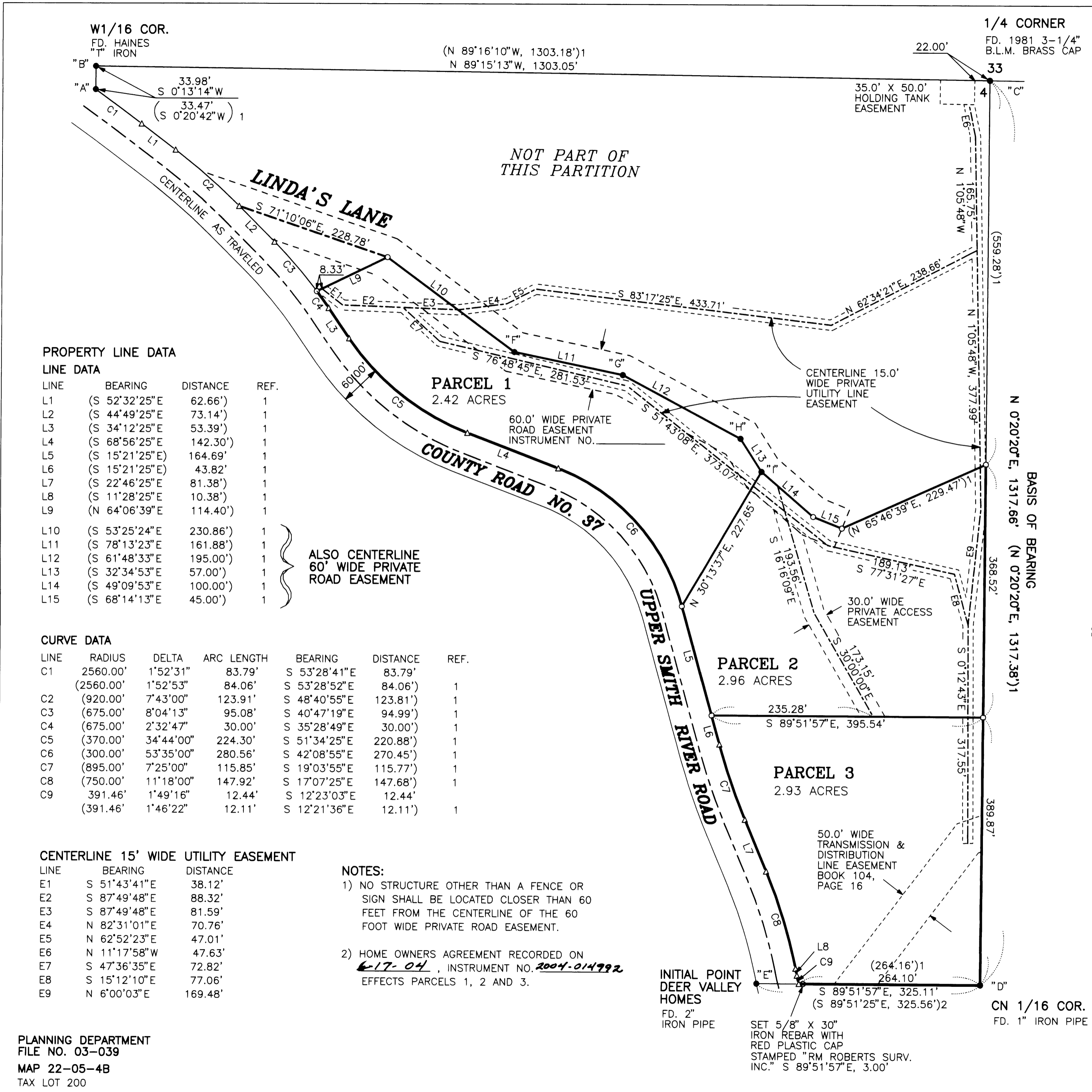
SCALE: 1" = 100'

LEGEND

- MONUMENTS FOUND: 5/8" IRON REBAR SET IN M 50-52 UNLESS OTHERWISE NOTED
- MONUMENTS SET: 5/8" X 30" IRON REBAR WITH YELLOW PLASTIC CAPS STAMPED "ROBERTS SURV. INC."
- △ COMPUTED POINT
- () DATA OF RECORD, BEARING & DISTANCE ARE SAME AS DATA OF RECORD UNLESS OTHERWISE NOTED.

REFERENCES

- () 1 M 50-52 BY BLOOM FILED AUG. 23, 1973
- () 2 M 50-53 BY BLOOM FILED AUG. 23, 1973



PROPERTY LINE DATA

LINE DATA

LINE	BEARING	DISTANCE	REF.
L1	(S 52°32'25"E	62.66')	1
L2	(S 44°49'25"E	73.14')	1
L3	(S 34°12'25"E	53.39')	1
L4	(S 68°56'25"E	142.30')	1
L5	(S 15°21'25"E	164.69')	1
L6	(S 15°21'25"E	43.82')	1
L7	(S 22°46'25"E	81.38')	1
L8	(S 11°28'25"E	10.38')	1
L9	(N 64°06'39"E	114.40')	1
L10	(S 53°25'24"E	230.86')	1
L11	(S 78°13'23"E	161.88')	1
L12	(S 61°48'33"E	195.00')	1
L13	(S 32°34'53"E	57.00')	1
L14	(S 49°09'53"E	100.00')	1
L15	(S 68°14'13"E	45.00')	1

CURVE DATA

LINE	RADIUS	DELTA	ARC LENGTH	BEARING	DISTANCE	REF.
C1	2560.00'	1°52'31"	83.79'	S 53°28'41"E	83.79'	1
	(2560.00'	1°52'53"	84.06'	S 53°28'52"E	84.06')	1
C2	(920.00'	7°43'00"	123.91'	S 48°40'55"E	123.81')	1
C3	(675.00'	8°04'13"	95.08'	S 40°47'19"E	94.99')	1
C4	(675.00'	2°32'47"	30.00'	S 35°28'49"E	30.00')	1
C5	(370.00'	34°44'00"	224.30'	S 51°34'25"E	220.88')	1
C6	(300.00'	53°35'00"	280.56'	S 42°08'55"E	270.45')	1
C7	(895.00'	7°25'00"	115.85'	S 19°03'55"E	115.77')	1
C8	(750.00'	11°18'00"	147.92'	S 17°07'25"E	147.68')	1
C9	391.46'	1°49'16"	12.44'	S 12°23'03"E	12.44'	1
	(391.46'	1°46'22"	12.11'	S 12°21'36"E	12.11')	1

CENTERLINE 15' WIDE UTILITY EASEMENT

LINE	BEARING	DISTANCE
E1	S 51°43'41"E	38.12'
E2	S 87°49'48"E	88.32'
E3	S 87°49'48"E	81.59'
E4	N 82°31'01"E	70.76'
E5	N 62°52'23"E	47.01'
E6	N 11°17'58"W	47.63'
E7	S 47°36'35"E	72.82'
E8	S 15°12'10"E	77.06'
E9	N 6°00'03"E	169.48'

NOTES:

- 1) NO STRUCTURE OTHER THAN A FENCE OR SIGN SHALL BE LOCATED CLOSER THAN 60 FEET FROM THE CENTERLINE OF THE 60 FOOT WIDE PRIVATE ROAD EASEMENT.
- 2) HOME OWNERS AGREEMENT RECORDED ON 6-17-04, INSTRUMENT NO. 2004-014992 EFFECTS PARCELS 1, 2 AND 3.

PLANNING DEPARTMENT
 FILE NO. 03-039
 MAP 22-05-4B
 TAX LOT 200

