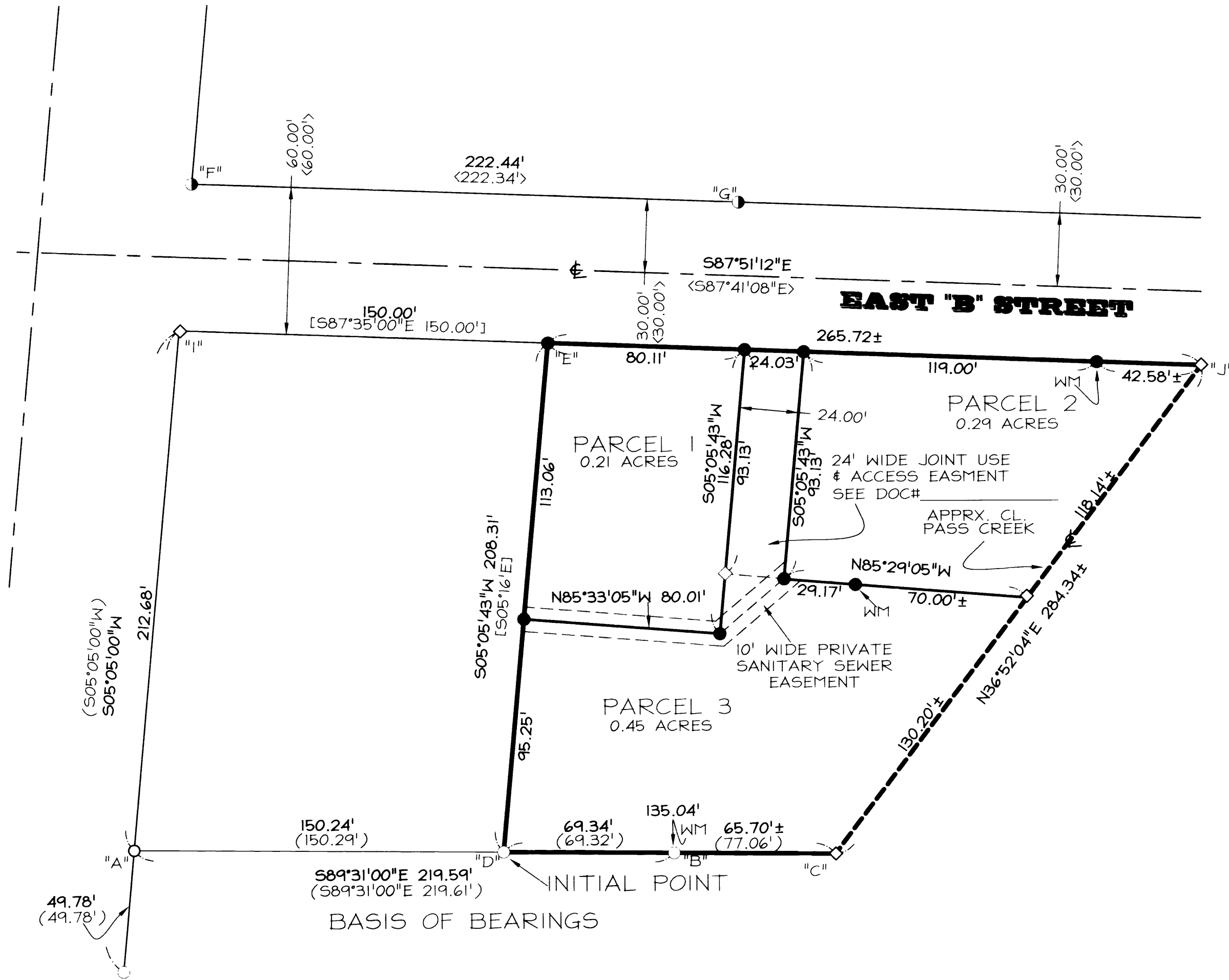
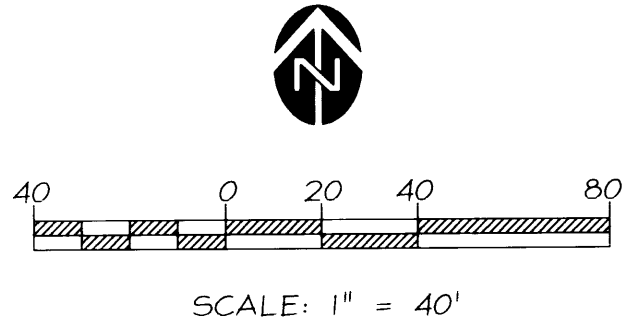


LAND PARTITION PLAT No. _____



LEGEND

- FD 5/8" REBAR PER LPP 1995-0085
- FD 5/8" ROD PER LPP 2003-0046
- ◇ CALC. POINT. NO MONUMNET FD OR SET
- SET 5/8" X 30" REBAR WITH RED PLASTIC CAP MARKED " GEOMAX INC."
- () RECORD PER LPP 2003-0046
- < > RECORD PER LPP 1995-0085
- [] RECORD PER M20-12
- FD FOUND
- CALC CALCULATED
- APPRX. CL. APPROXIMATE CENTER LINE
- XXXX-XXXXX CLERKS RECEPTION NUMBER DCDR
- MXX MAP # DCSO
- DCSO DOUGLAS COUNTY SURVEYOR'S OFFICE
- WM WITNESS MONUMENT
- LPP XXXX-XXXXX LAND PARTITION PLAT NUMBER DCPR
- DCPR DOUGLAS COUNTY PLAT RECORDS
- DCDR DOUGLAS COUNTY DEEDS & RECORDS

REGISTERED
PROFESSIONAL
LAND SURVEYOR

Dennis A. Crowe

OREGON
JANUARY 18, 1994
DENNIS A. CROWE
845
RENEWAL 12-31-05

FINAL
PARTITION PLAT
FOR
JOE WARD
NE1/4, SEC. 17,
T22S, R5W, W.M.,
DRAIN, OR
T.L. 22-05-17-AB:08200

Geomax
INC.

ENGINEERING, LAND SURVEYING, BUILDING DESIGN
806 N. NINTH STREET COTTAGE GROVE, OREGON 97424
TELEPHONE- (541) 942-0126 FAX- (541) 942-7935

JOB NO.:	D212	D.C.E.	CHECKED:
DATE:	12/17/03	REV.	S.E.S.
			5/19/04dce