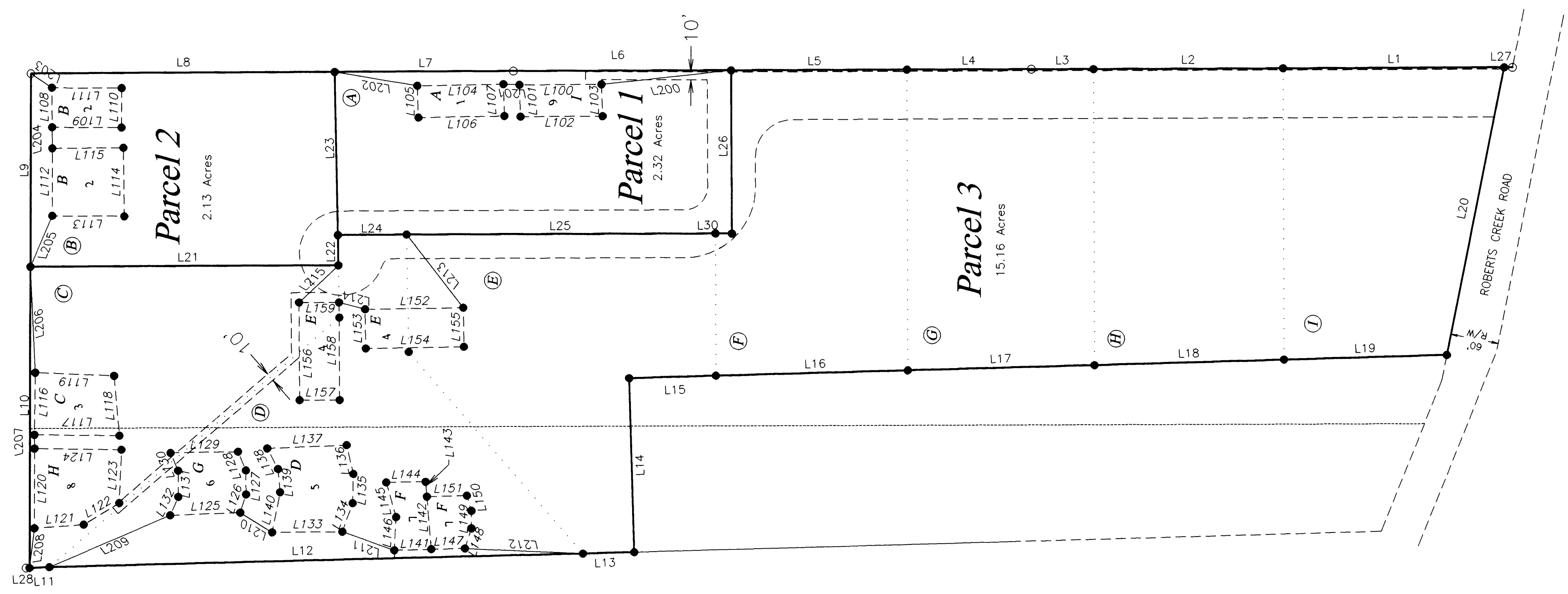


2003-0023 B

# LAND PARTITION

PORTIONS OF LOT 1 AND LOT A, BLOCK 1  
 INSTRUMENT NO. 1996-25013  
 GLENGARRY FRUIT LANDS  
 SW1/4, SEC 13, TWP 28 S, R 6 W, WM  
 DOUGLAS COUNTY, OREGON  
 FEBRUARY 2003  
 SCALE 1" = 100'

PARTITIONERS AND OWNERS  
 JOHN R. & REGINA L. KOOKEN  
 PO BOX 682  
 ROSEBURG, OR 97470  
 PH (541) 679-3477



## LINE TABLE FOR SEPTIC DRAIN FIELDS

NO.	DIRECTION	DIST	NO.	DIRECTION	DIST	NO.	DIRECTION	DIST	NUMBER	DIRECTION	DISTANCE
L100	N 00°27'03" W	102.51 FT	L120	N 90°00'00" W	100.13 FT	L140	N 78°54'15" W	51.18 FT	L200	N 06°18'16" W	163.02 FT
L101	S 87°54'40" W	40.01 FT	L121	S 04°15'00" E	61.88 FT	L141	S 01°36'11" E	46.16 FT	L201	N 02°12'37" E	20.05 FT
L102	S 00°27'03" E	102.51 FT	L122	S 31°17'36" E	51.98 FT	L142	N 85°07'26" E	66.43 FT	L202	N 09°32'36" E	104.92 FT
L103	N 87°54'40" E	40.01 FT	L123	S 87°45'29" E	67.09 FT	L143	N 85°07'26" E	18.66 FT	L203	S 34°20'15" W	31.98 FT
L104	N 01°08'00" W	107.49 FT	L124	N 00°47'43" E	108.76 FT	L144	N 01°01'48" W	49.28 FT	L204	S 89°36'30" W	31.48 FT
L105	S 87°54'40" W	39.99 FT	L125	S 02°19'10" E	87.65 FT	L145	S 73°58'57" W	45.29 FT	L205	N 66°49'07" W	69.41 FT
L106	S 01°08'00" E	107.49 FT	L126	S 72°32'31" E	23.70 FT	L146	N 87°03'56" W	41.71 FT	L206	S 87°14'46" W	133.48 FT
L107	N 87°54'40" E	39.99 FT	L127	N 89°42'23" E	30.12 FT	L147	S 01°36'11" E	42.29 FT	L207	S 89°32'57" W	17.34 FT
L108	S 89°32'57" W	49.65 FT	L128	N 67°18'21" E	25.74 FT	L148	S 72°41'07" E	26.48 FT	L208	S 83°14'07" E	50.13 FT
L109	S 00°16'46" W	86.58 FT	L129	N 01°07'03" W	84.30 FT	L149	N 89°30'08" E	21.97 FT	L209	S 23°29'20" E	164.16 FT
L110	S 89°48'53" E	49.66 FT	L130	S 66°53'07" W	24.19 FT	L150	N 73°33'12" E	19.66 FT	L210	S 31°46'10" W	46.86 FT
L111	N 00°16'29" E	87.13 FT	L131	S 89°23'04" W	33.03 FT	L151	N 01°16'11" W	50.10 FT	L211	S 19°34'31" W	69.17 FT
L112	S 89°55'16" W	84.96 FT	L132	N 66°14'09" W	25.24 FT	L152	N 00°59'28" W	122.76 FT	L212	N 02°20'31" E	147.23 FT
L113	S 00°15'09" W	89.88 FT	L133	S 00°27'03" E	87.62 FT	L153	S 89°00'32" W	49.15 FT	L213	S 52°16'16" W	116.21 FT
L114	N 89°10'56" E	86.07 FT	L134	S 70°07'55" E	38.09 FT	L154	S 00°59'28" E	122.76 FT	L214	N 15°07'13" E	33.94 FT
L115	N 00°27'03" W	88.77 FT	L135	S 88°41'56" E	36.60 FT	L155	N 89°00'32" E	49.15 FT	L215	N 43°55'26" W	67.94 FT
L116	N 89°17'39" W	78.07 FT	L136	N 76°55'48" E	37.32 FT	L156	S 89°32'57" W	122.76 FT			
L117	S 00°38'16" W	106.36 FT	L137	N 02°21'40" W	99.38 FT	L157	S 00°27'03" E	49.91 FT			
L118	N 84°47'19" E	75.60 FT	L138	S 62°33'45" W	29.11 FT	L158	N 89°32'57" E	122.76 FT			
L119	N 02°17'56" E	98.61 FT	L139	S 84°35'13" W	29.43 FT	L159	N 00°27'03" W	49.91 FT			

REGISTERED  
 PROFESSIONAL  
 LAND SURVEYOR  
*Maurice E. Farr*  
 OREGON  
 SEPT. 23, 1977  
 MAURICE E. FARR  
 1181  
 3-03  
 EXPIRES 12-31-03

### LEGEND

● SET 5/8" X 30" I.R. WITH PLASTIC CAP  
 MARKED  
 M.E. FARR  
 LS 1181

2003-0023 B