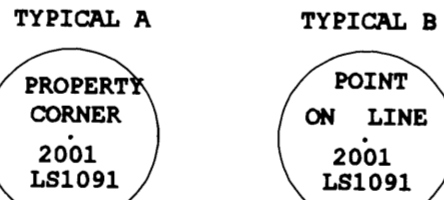
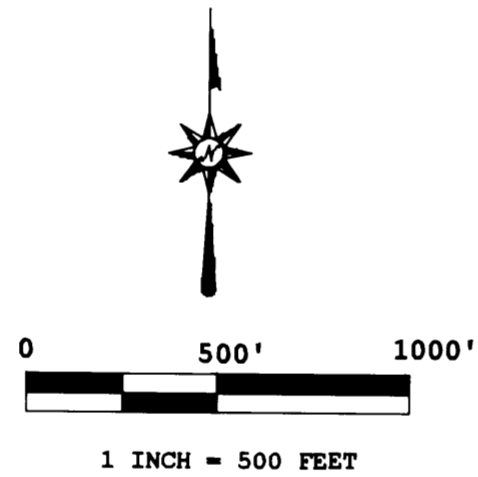


FINAL PARTITION PLAT
 FOR: ROSEBURG RESOURCES CO.
 SECTION 34, T21S, R12W, W.M.
 DOUGLAS COUNTY, OREGON
 01, JULY 2001

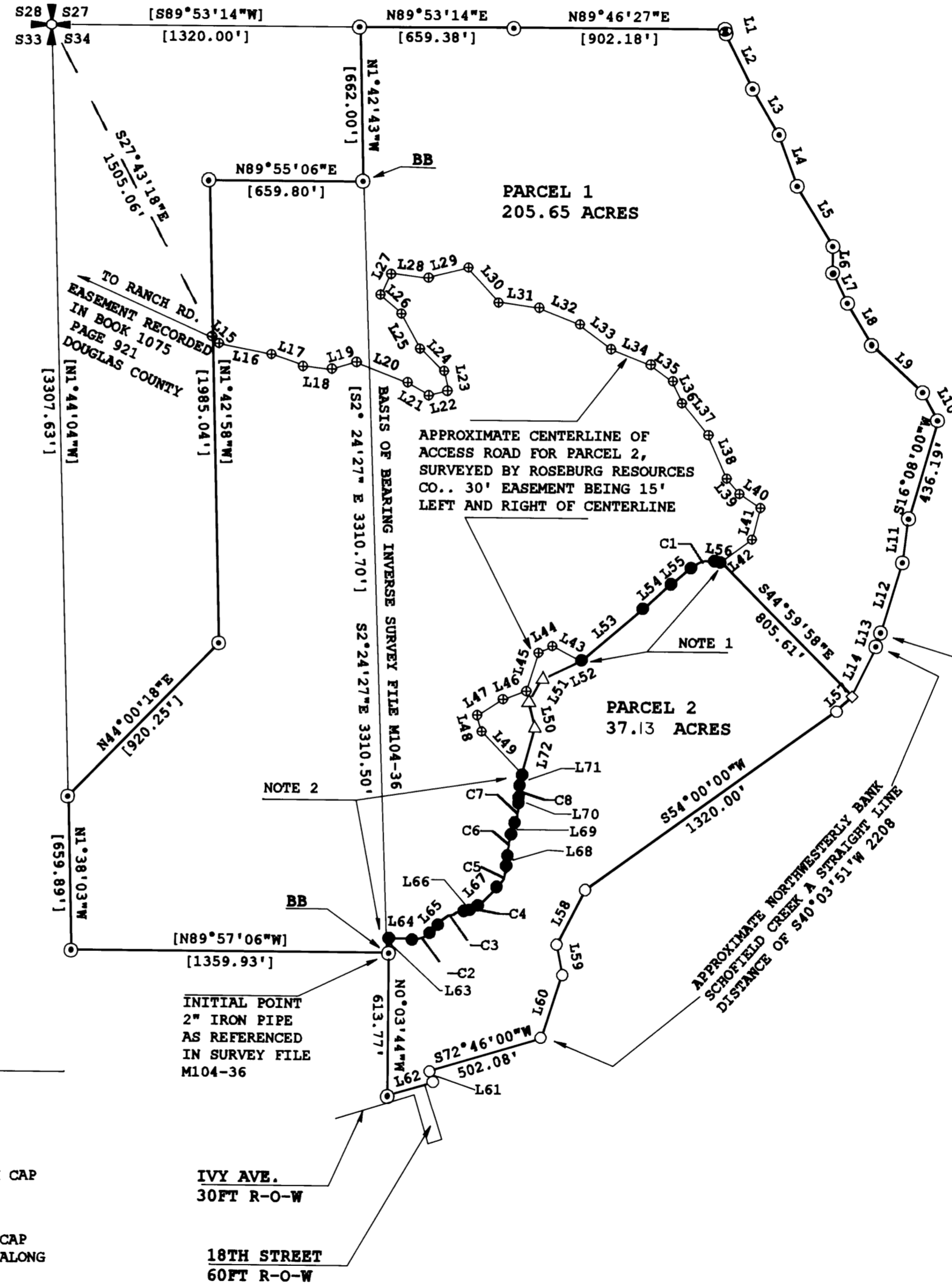
LINE	BEARING	HORIZ DIST	RECORD DATA REF.
L1	S13°12'00"E	19.54	M104-36
L2	S26°25'00"E	264.66	M104-36
L3	S30°21'00"E	226.62	M104-36
L4	S20°05'00"E	233.90	M104-36
L5	S31°14'00"E	299.20	M104-36
L6	S0°55'00"E	115.60	M104-36
L7	S26°05'00"E	140.97	M104-36
L8	S30°27'00"E	207.65	M104-36
L9	S47°32'00"E	296.68	M104-36
L10	S29°08'00"E	138.80	M104-36
L11	S7°42'00"W	195.07	M104-36
L12	S16°43'00"W	310.05	M104-36
L13	S16°43'00"W	62.00	M104-36
L14	S24°57'41"W	238.45	M104-36
L15	S49°03'00"E	39.62	M104-36
L16	S78°00'00"E	227.80	M104-36
L17	S71°14'00"E	145.50	M104-36
L18	S84°34'00"E	125.00	M104-36
L19	N74°16'00"E	105.50	M104-36
L20	S69°09'00"E	236.50	M104-36
L21	S60°07'00"E	106.10	M104-36
L22	N78°31'00"E	81.70	M104-36
L23	N11°19'00"W	86.10	M104-36
L24	N46°22'00"W	143.70	M104-36
L25	N29°09'00"W	169.20	M104-36
L26	N48°11'00"W	118.30	M104-36
L27	N26°26'00"E	102.90	M104-36
L28	S84°00'00"E	158.10	M104-36
L29	N74°44'00"E	177.30	M104-36
L30	S41°17'00"E	200.20	M104-36
L31	S82°59'00"E	174.30	M104-36
L32	S67°58'00"E	188.00	M104-36
L33	S52°14'00"E	171.90	M104-36
L34	S69°06'00"E	181.90	M104-36
L35	S54°15'00"E	115.90	M104-36
L36	S24°20'00"E	106.90	M104-36
L37	S39°35'00"E	172.90	M104-36
L38	S23°54'00"E	200.40	M104-36
L39	S39°23'00"E	85.00	M104-36
L40	S56°57'00"E	110.90	M104-36
L41	S15°25'00"W	139.40	M104-36
L42	S53°08'23"W	165.20	M104-36
L43	N62°31'00"W	137.60	M104-36
L44	S61°41'00"W	70.00	M104-36
L45	S17°26'00"W	168.70	M104-36
L46	S68°56'00"W	107.70	M104-36
L47	S57°55'00"W	127.50	M104-36
L48	S15°14'00"E	76.00	M104-36
L49	S43°41'44"E	252.69	M104-36
L50	N13°07'19"W	115.84	M104-36
L51	N31°13'09"E	114.23	M104-36
L52	N64°26'29"E	181.86	M104-36
L53	N49°12'05"E	345.17	M104-36
L54	N47°57'55"E	161.09	M104-36
L55	N50°28'39"E	110.91	M104-36
L56	S82°09'54"E	25.00	M104-36
L57	S46°06'51"W	96.20	M104-36
L58	S27°00'00"W	264.00	M104-36
L59	S10°00'00"E	132.00	M104-36
L60	S17°43'17"W	283.82	M104-36
L61	S17°14'00"E	50.00	M104-36
L62	S72°46'00"W	198.33	M104-36
L63	N0°03'44"W	61.61	M104-36
L64	S88°26'05"E	99.40	M104-36
L65	N44°30'02"E	48.08	M104-36
L66	N79°09'45"E	29.47	M104-36
L67	N45°26'26"E	112.98	M104-36
L68	N2°51'41"E	45.23	M104-36
L69	N17°31'08"E	51.42	M104-36
L70	N1°38'33"E	28.76	M104-36
L71	N11°32'03"E	48.00	M104-36
L72	N14°05'39"E	210.50	M104-36

PLANNING DEPT. FILE NO. NONE
 ZONE: CS (URBAN CONSERVATION SHORELANDS)
 R-A (RURAL SUBURBAN RESIDENTIAL)
 R-1 (SINGLE FAMILY RESIDENTIAL)
 COMP. PLAN: NOT APPLICABLE
 THESE PARCELS ARE NOT INTENDED FOR
 RESIDENTIAL USE



- LEGEND
- ⊕ SECTION CORNER AS NOTED
 - MONUMENT OF RECORD DOUGLAS COUNTY SURVEY FILE M104-36, NOT TIED THIS SURVEY
 - △ SET 5/8" X 30" REBAR WITH 2 1/2" ALUMINUM CAP MARKED AS SHOWN IN TYPICAL A
 - CALCULATED POSITION NO MONUMENT SET
 - SET 5/8" X 30" REBAR WITH YELLOW PLASTIC CAP MARKED "LS 1091" .75 FEET BELOW SUBGRADE ALONG CENTERLINE OF EXISTING LOGGING ROAD
 - ◇ SET 5/8" X 30" REBAR WITH 2 1/2" ALUMINUM CAP MARKED AS SHOWN IN TYPICAL B
 - [] RECORD DATA DOUGLAS COUNTY SURVEY FILE M104-36
 - ⊕ AS TRAVELED CENTERLINE OF EXISTING LOGGING ROAD - SURVEYED BY ROSEBURG RESOURCES, CO.
 - BB MONUMENT TIED FOR BASIS OF BEARING

CURVE	BEARING	HORIZ DIST	RADIUS	ARC	DELTA	TANGENT
C1	N74°09'22"E	104.85	130.54	107.90	47°21'27"	57.24
C2	N68°01'58"E	79.23	99.22	81.50	47°03'53"	43.21
C3	N61°49'53"E	125.27	210.26	127.20	34°39'43"	65.61
C4	N62°18'05"E	38.74	66.79	39.31	33°43'19"	20.24
C5	N24°09'03"E	99.15	136.54	101.47	42°34'45"	53.20
C6	N10°11'24"E	92.92	364.22	93.18	14°39'27"	46.84
C7	N9°34'51"E	85.65	310.08	85.92	15°52'35"	43.24
C8	N6°35'18"E	46.14	267.58	46.20	9°53'29"	23.16



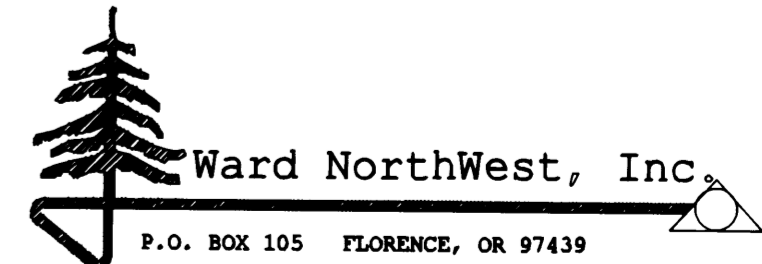
- RECORDED DOCUMENTS AFFECTING THIS PROPERTY
- GRANT OF RIGHT OF WAY AND DISPOSAL AREA, INCLUDING THE TERMS AND PROVISIONS THEREOF, FROM RUSSEL J. HUBBARD, ET UX, TO THE PORT OF UMPQUA, RECORDED APRIL 13, 1940, IN VOLUME 101, PAGE 285, RECORDER'S NO. 14864, DEED RECORDS OF DOUGLAS COUNTY, OREGON.
 - LEASE, INCLUDING THE TERMS AND PROVISIONS THEREOF, GIVEN BY JOHN K. HUBBARD, TRUSTEE, AND UNDER THAT CERTAIN TRUST AGREEMENT BETWEEN SAID TRUSTEE AND RUSSEL J. HUBBARD AND EVA K. HUBBARD, TRUSTORS, AS LESSOR, AND TEXACO INC. AS LESSEE, RECORDED APRIL 12, 1962 IN VOLUME 312 RECORDER'S HO. 306040, DEED RECORDS OF DOUGLAS COUNTY, OREGON AND MODIFIED BY AGREEMENT, RECORDERS NO. 334373, DEED RECORDS OF DOUGLAS COUNTY, OREGON.
 - RESERVATION OF OIL GAS AND OTHER HYDROCARBONS AND RESTRICTIONS AS CONTAINED IN DEED FROM JOHN K. HUBBARD, TRUSTEE RECORDED JANUARY 29, 1964, IN VOLUME 331, RECORDER'S NO. 334372, RECORDS OF DOUGLAS COUNTY, OREGON.

NOTE 1 AND 2
 RECIPROCAL EASEMENTS TO BE GRANTED BETWEEN PARCELS 1 AND 2. TOTAL EASEMENT WIDTH IS 30 FEET BEING 15 FEET LEFT AND RIGHT OF CENTERLINE POINTS ALONG EXISTING LOGGING ROAD.

NO MONUMENT PER MAP FILE: M104-36

REGISTERED PROFESSIONAL LAND SURVEYOR
 OREGON
 ROBERT B. WARD JR.
 JULY 30, 1976
 LS 1091

EXPIRES: 6/30/02



P.O. BOX 105 FLORENCE, OR 97439
 (541) 997-9201 FAX: 541-997-3546

X:\surveys\00\00-53\00-53.trv

2002-10083

2002-10083

2002-0016 A

2002-0016 A