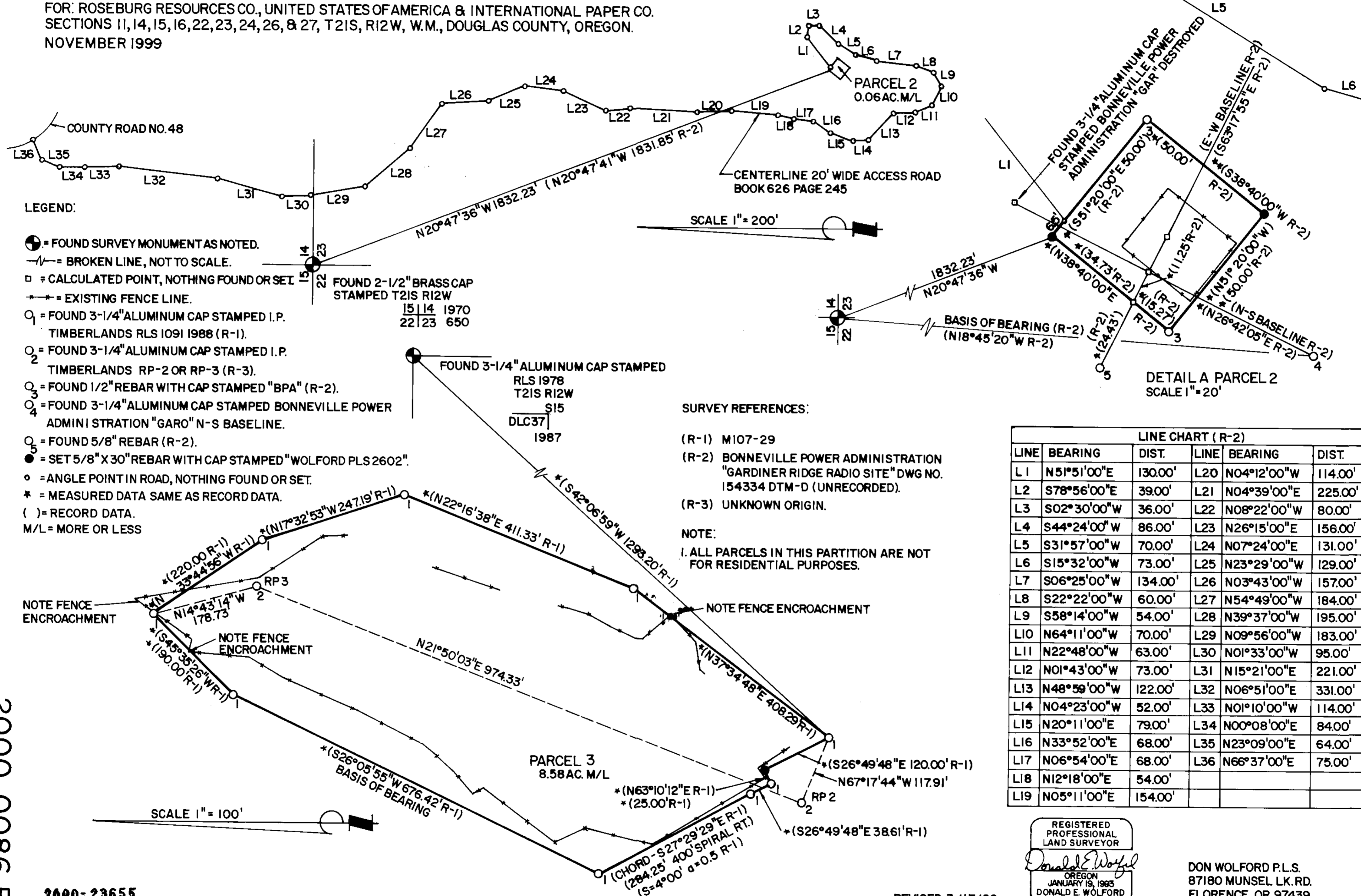


LAND PARTITION

FOR ROSEBURG RESOURCES CO., UNITED STATES OF AMERICA & INTERNATIONAL PAPER CO.
 SECTIONS 11, 14, 15, 16, 22, 23, 24, 26, & 27, T21S, R12W, W.M., DOUGLAS COUNTY, OREGON.
 NOVEMBER 1999



LEGEND:

- = FOUND SURVEY MONUMENT AS NOTED.
- - - = BROKEN LINE, NOT TO SCALE.
- = CALCULATED POINT, NOTHING FOUND OR SET.
- = EXISTING FENCE LINE.
- ₁ = FOUND 3-1/4" ALUMINUM CAP STAMPED I.P. TIMBERLANDS RLS 1091 1988 (R-1).
- ₂ = FOUND 3-1/4" ALUMINUM CAP STAMPED I.P. TIMBERLANDS RP-2 OR RP-3 (R-3).
- ₃ = FOUND 1/2" REBAR WITH CAP STAMPED "BPA" (R-2).
- ₄ = FOUND 3-1/4" ALUMINUM CAP STAMPED BONNEVILLE POWER ADMINISTRATION "GARO" N-S BASELINE.
- ₅ = FOUND 5/8" REBAR (R-2).
- = SET 5/8" X 30" REBAR WITH CAP STAMPED "WOLFORD PLS 2602".
- = ANGLE POINT IN ROAD, NOTHING FOUND OR SET.
- * = MEASURED DATA SAME AS RECORD DATA.
- () = RECORD DATA.
- M/L = MORE OR LESS

SURVEY REFERENCES:

- (R-1) M107-29
- (R-2) BONNEVILLE POWER ADMINISTRATION "GARDINER RIDGE RADIO SITE" DWG NO. 154334 DTM-D (UNRECORDED).
- (R-3) UNKNOWN ORIGIN.

NOTE:

1. ALL PARCELS IN THIS PARTITION ARE NOT FOR RESIDENTIAL PURPOSES.

LINE CHART (R-2)					
LINE	BEARING	DIST.	LINE	BEARING	DIST.
L1	N51°51'00"E	130.00'	L20	N04°12'00"W	114.00'
L2	S78°56'00"E	39.00'	L21	N04°39'00"E	225.00'
L3	S02°30'00"W	36.00'	L22	N08°22'00"W	80.00'
L4	S44°24'00"W	86.00'	L23	N26°15'00"E	156.00'
L5	S31°57'00"W	70.00'	L24	N07°24'00"E	131.00'
L6	S15°32'00"W	73.00'	L25	N23°29'00"W	129.00'
L7	S06°25'00"W	134.00'	L26	N03°43'00"W	157.00'
L8	S22°22'00"W	60.00'	L27	N54°49'00"W	184.00'
L9	S58°14'00"W	54.00'	L28	N39°37'00"W	195.00'
L10	N64°11'00"W	70.00'	L29	N09°56'00"W	183.00'
L11	N22°48'00"W	63.00'	L30	N01°33'00"W	95.00'
L12	N01°43'00"W	73.00'	L31	N15°21'00"E	221.00'
L13	N48°59'00"W	122.00'	L32	N06°51'00"E	331.00'
L14	N04°23'00"W	52.00'	L33	N01°10'00"W	114.00'
L15	N20°11'00"E	79.00'	L34	N00°08'00"E	84.00'
L16	N33°52'00"E	68.00'	L35	N23°09'00"E	64.00'
L17	N06°54'00"E	68.00'	L36	N66°37'00"E	75.00'
L18	N12°18'00"E	54.00'			
L19	N05°11'00"E	154.00'			

REGISTERED PROFESSIONAL LAND SURVEYOR
Donald E. Wolford
 OREGON
 JANUARY 19, 1983
 DONALD E. WOLFORD
 2602
 PLS EXPIRES 6/30/02

DON WOLFORD P.L.S.
 87180 MUNSEL LK. RD.
 FLORENCE, OR. 97439
 (541) 997-4455
2000-23655

2000-0086 B

2000-0086 B