

2000-0051A

LEGEND

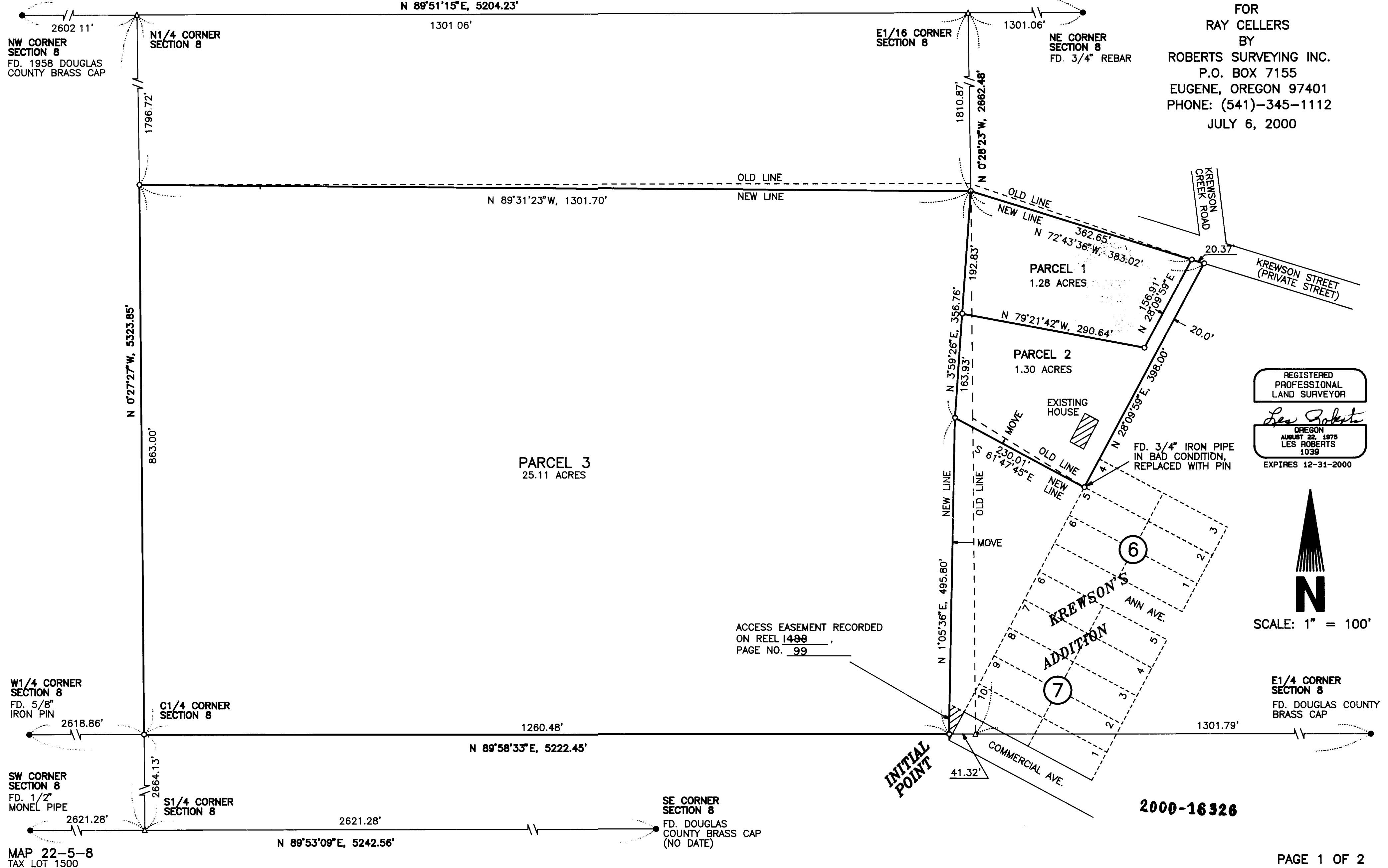
- MONUMENTS FOUND AS NOTED
- MONUMENTS SET: 5/8 X 30" IRON PIN WITH YELLOW PLASTIC CAP STAMPED "ROBERTS SURV. INC."
- △ COMPUTED POINT
- () DATA OF RECORD
- DENOTES LINE NOT TO SCALE

REFERENCES

- (1) SURVEY NO. M114-60 BY PEEL DATED MARCH 13, 1992
- (2) SURVEY NO. M90-78 BY FLATEBO DATED JANUARY 28, 1986.
- (3) KREWSON'S ADDITION TO DRAIN, VOLUME 2, PAGE 2.

**LAND PARTITION PLAT
AND
PROPERTY LINE ADJUSTMENT
LOCATED IN
NE1/4 SECTION 8, T22S, R5W W.M.
(CITY OF DRAIN)
DOUGLAS COUNTY, OREGON
FOR
RAY CELLERS
BY
ROBERTS SURVEYING INC.
P.O. BOX 7155
EUGENE, OREGON 97401
PHONE: (541)-345-1112
JULY 6, 2000**

BASIS OF BEARING
(N 89°51'15"E, 5203.83')1
N 89°51'15"E, 5204.23'



REGISTERED
PROFESSIONAL
LAND SURVEYOR
Les Roberts
OREGON
AUGUST 22, 1975
LES ROBERTS
1039
EXPIRES 12-31-2000

N
SCALE: 1" = 100'

2000-16326

2000-16326

2000-0051A

MAP 22-5-8
TAX LOT 1500