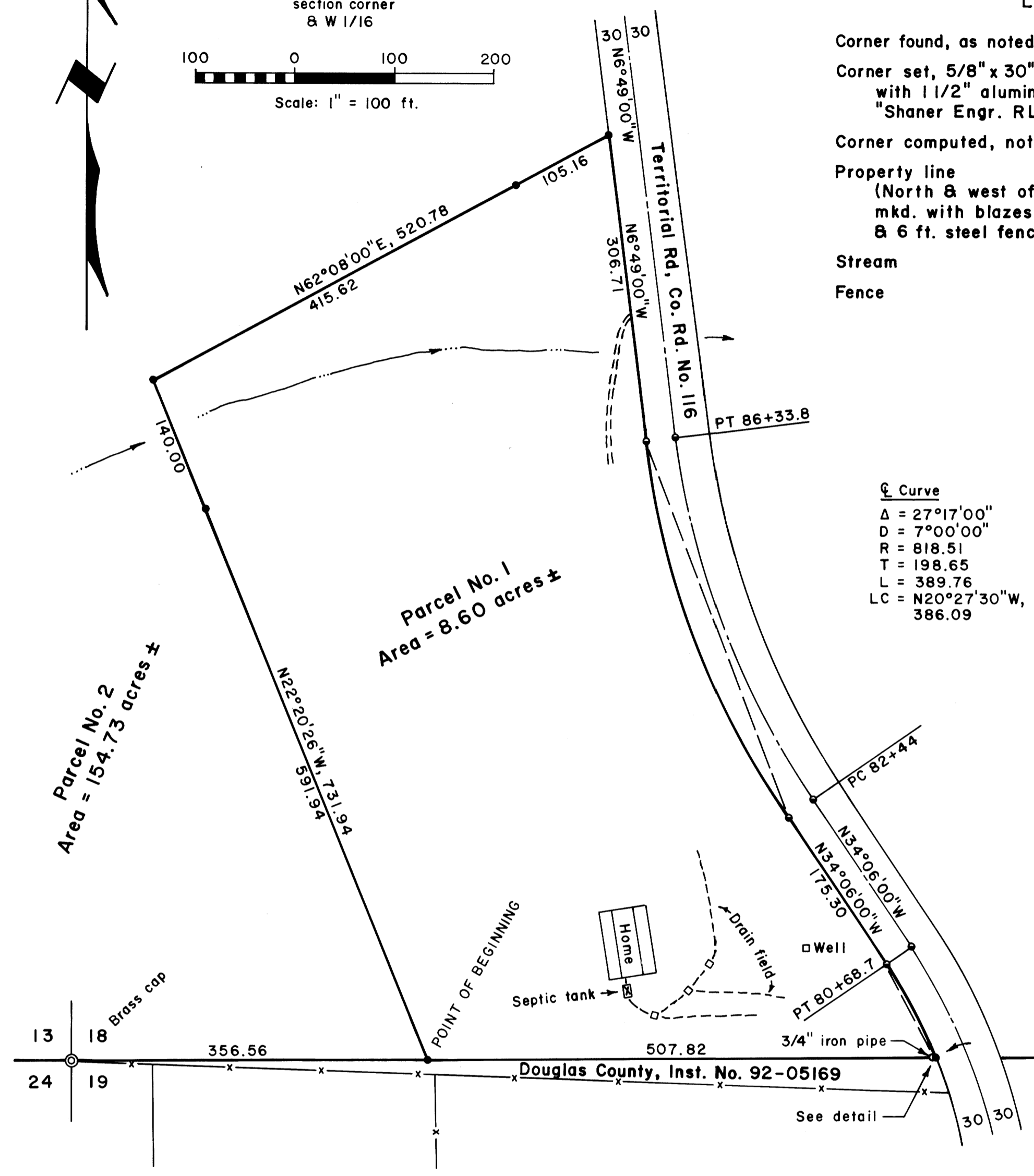
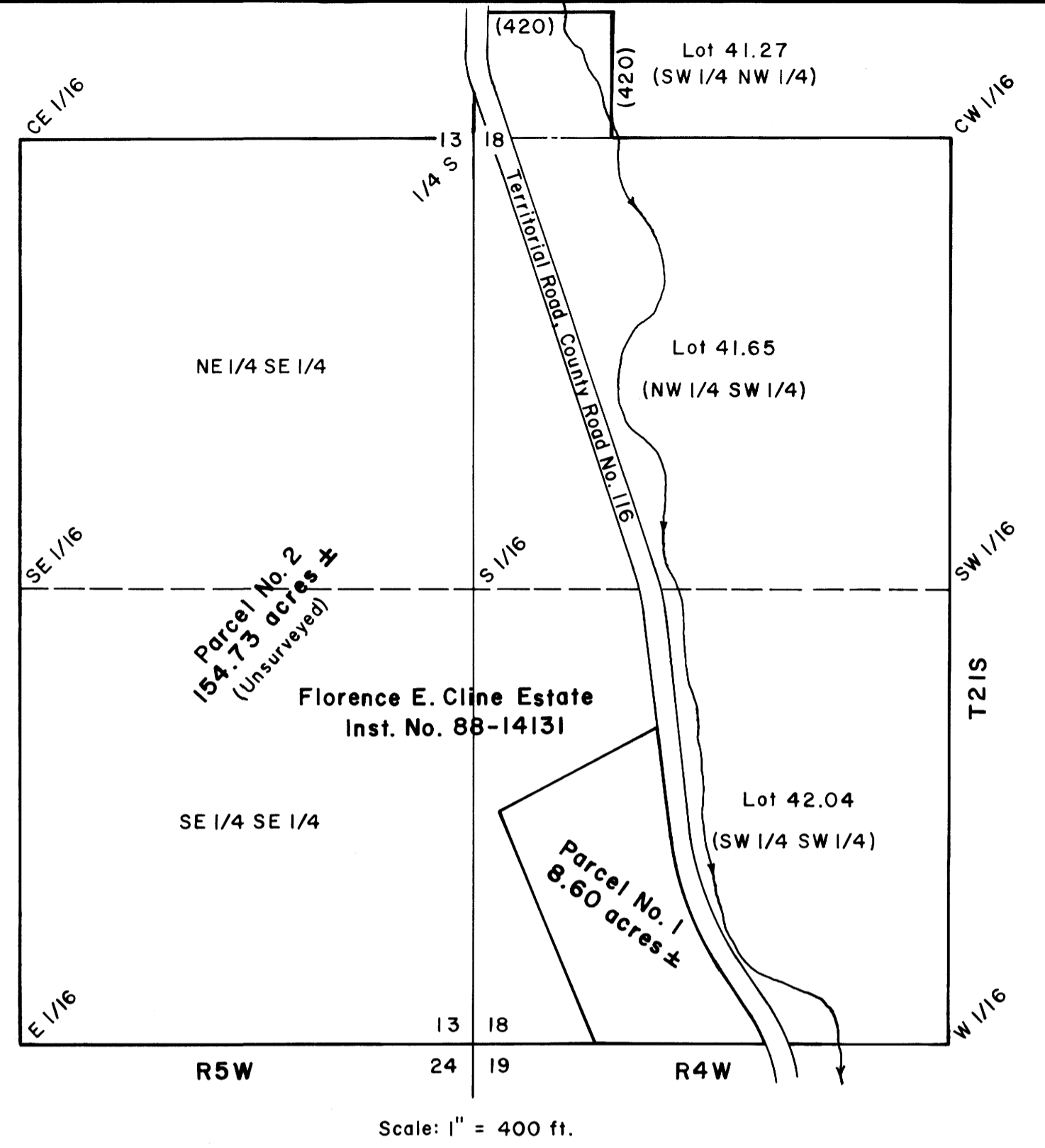
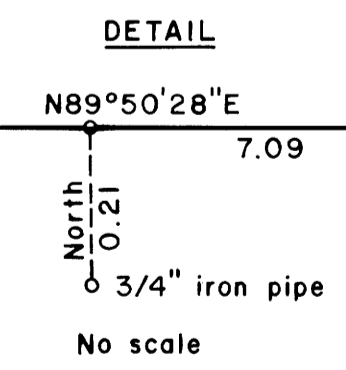


LEGEND

- Corner found, as noted ⊙
- Corner set, 5/8" x 30" iron rod with 1/2" aluminum cap mkd. "Shaner Engr. RLS 430" •
- Corner computed, not set •
- Property line (North & west of Parcel No. 1 mkd. with blazes, green paint & 6 ft. steel fence posts.) —
- Stream ~
- Fence -x-x-

<b>Curve</b>	<b>West R/W Curve</b>
Δ = 27°17'00"	Δ = 27°17'00"
D = 7°00'00"	D = 6°45'09"
R = 818.51	R = 848.51
T = 198.65	T = —
L = 389.76	L = 404.05
LC = N20°27'30"W, 386.09	LC = N20°27'30"W, 400.24

<b>Curve</b>	<b>West R/W Curve</b>
Δ = —	Δ = 11°20'10"
D = 10°00'00"	D = 10°33'09" (10.55249°)
R = 572.96	R = 542.96
T = —	T = —
L = —	L = 107.43
LC = —	LC = N28°25'55"W, 107.25



N89°50'28"E, 1,388.76  
(Record R1, N89°50'28"E, 1,388.97, basis of bearings)

**PLAT OF LAND PARTITION**  
in the SW 1/4 of Section 18, T21S, R4W and  
the SE 1/4 of Section 13, T21S, R5W, W.M.,  
Douglas County, Oregon

For: Lewis Hoffman, Personal Repr.  
Florence E. Cline Estate  
975 Oak Street, Suite 800  
Eugene, Oregon 97401-3156

By: Shaner Engineering, Inc.  
P.O. Box 1430  
Roseburg, Oregon 97470

REGISTERED  
PROFESSIONAL  
LAND SURVEYOR

*Bruce A. Shaner*

OREGON  
OCT 4, 1957  
BRUCE A. SHANER  
430

Renews June 30, 1998

COUNTY SURVEYORS FILE DATA  
DO NOT REMOVE FROM OFFICE

97-18470

July 15, 1997

Sheet 1 of 2