

PLAN DESIGNATIONS:
(FFT) FARM FOREST TRANSITIONAL
RES-2 DWLG UNITS / ACRE
RES-8 DWLG UNITS / ACRE
INDUSTRIAL

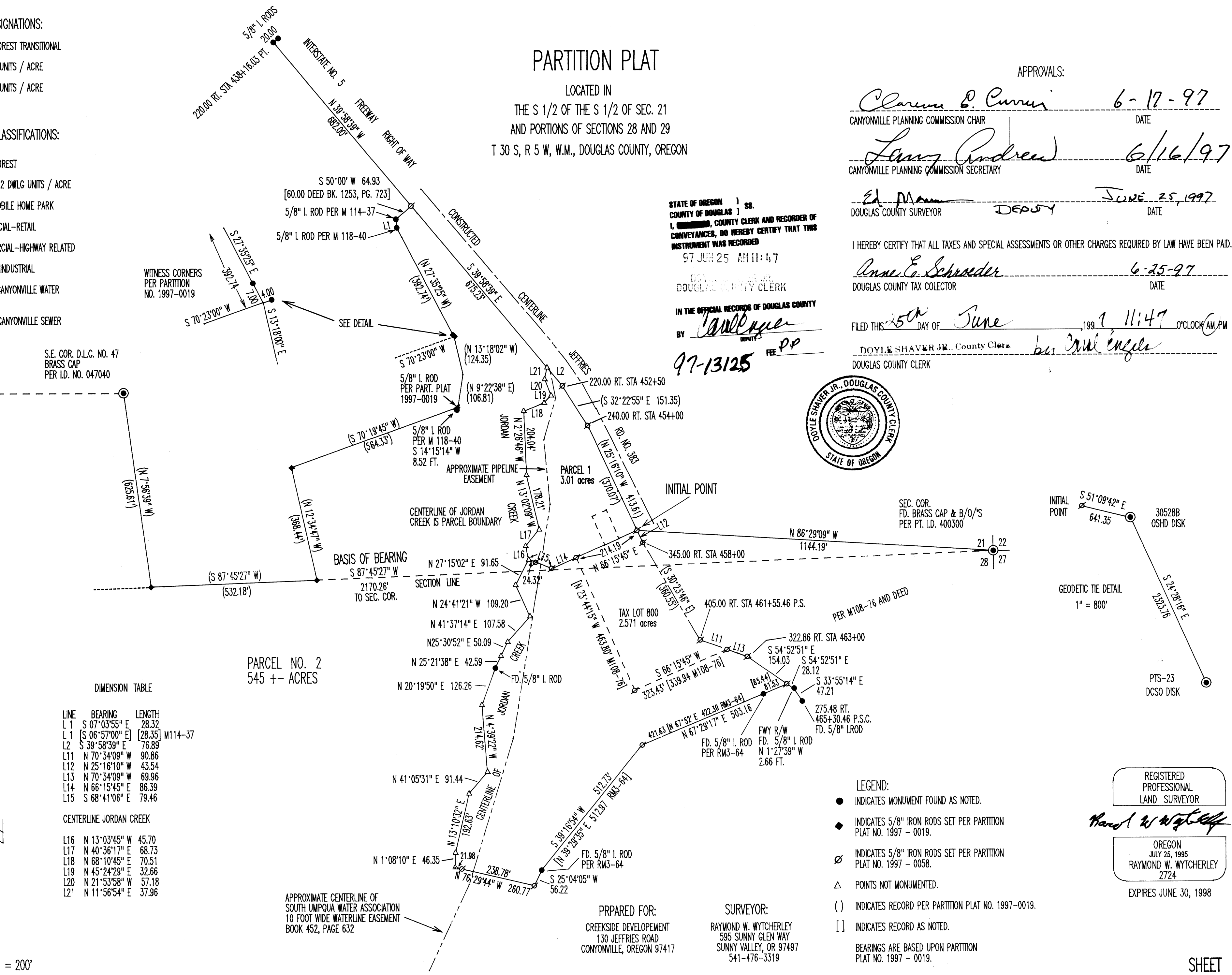
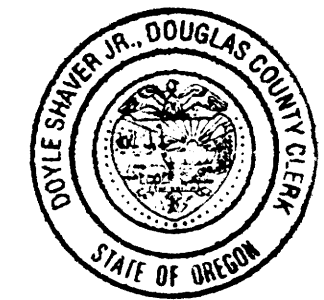
ZONING CLASSIFICATIONS:
(FF) FARM FOREST
R-1/B RES-2 DWLG UNITS / ACRE
RMP RES-MOBILE HOME PARK
C-1 COMMERCIAL-RETAIL
C-2 COMMERCIAL-HIGHWAY RELATED
1G GENERAL INDUSTRIAL
WATER: NO. CANYONVILLE WATER DISTRICT
SEWER: NO. CANYONVILLE SEWER DISTRICT

PARTITION PLAT

LOCATED IN
THE S 1/2 OF THE S 1/2 OF SEC. 21
AND PORTIONS OF SECTIONS 28 AND 29
T 30 S, R 5 W, W.M., DOUGLAS COUNTY, OREGON

APPROVALS:
Clarene P. Curran 6-17-97
CANYONVILLE PLANNING COMMISSION CHAIR DATE
Larry Andrew 6/16/97
CANYONVILLE PLANNING COMMISSION SECRETARY DATE
Ed Mann JUNE 25, 1997
DOUGLAS COUNTY SURVEYOR DEPUTY DATE
I HEREBY CERTIFY THAT ALL TAXES AND SPECIAL ASSESSMENTS OR OTHER CHARGES REQUIRED BY LAW HAVE BEEN PAID.
Anne E. Schroeder 6-25-97
DOUGLAS COUNTY TAX COLLECTOR DATE
FILED THIS 25th DAY OF June 1997 11:47 O'CLOCK AM/PM
DOYLE SHAVER JR., County Clerk
DOUGLAS COUNTY CLERK

STATE OF OREGON)
COUNTY OF DOUGLAS)
I, *Raymond W. Wytcherley*, COUNTY CLERK AND RECORDER OF
CONVEYANCES, DO HEREBY CERTIFY THAT THIS
INSTRUMENT WAS RECORDED
97 JUN 25 AM 11:47
DOUGLAS COUNTY CLERK
IN THE OFFICIAL RECORDS OF DOUGLAS COUNTY
BY *Raymond W. Wytcherley*
97-13125 FEE PP



DIMENSION TABLE

LINE	BEARING	LENGTH
L 1	S 07° 03' 55" E	28.32
L 1	[S 06° 57' 00" E] [28.35] M114-37	
L 2	S 39° 58' 39" E	76.89
L 11	N 70° 34' 09" W	90.86
L 12	N 25° 16' 10" W	43.54
L 13	N 70° 34' 09" W	69.96
L 14	N 66° 15' 45" E	86.39
L 15	S 68° 41' 06" E	79.46

CENTERLINE JORDAN CREEK

L16	N 13° 03' 45" W	45.70
L17	N 40° 36' 17" E	68.73
L18	N 68° 10' 45" E	70.51
L19	N 45° 24' 29" E	32.66
L20	N 21° 53' 58" W	57.18
L21	N 11° 56' 54" E	37.96

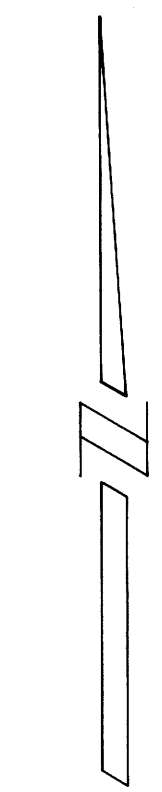
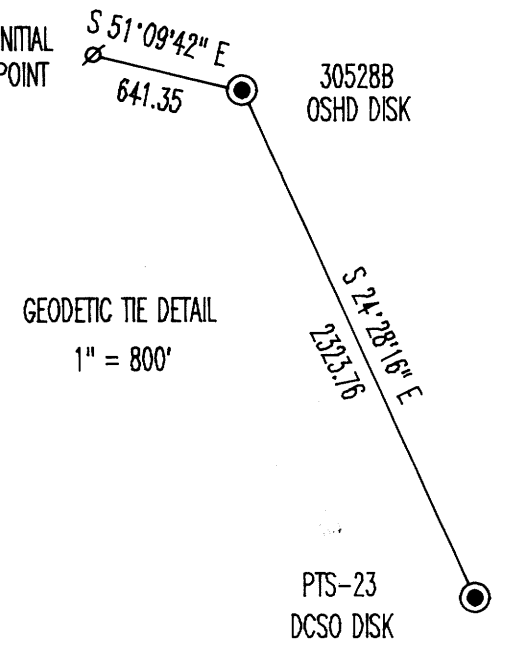
APPROXIMATE CENTERLINE OF
SOUTH UMPQUA WATER ASSOCIATION
10 FOOT WIDE WATERLINE EASEMENT
BOOK 452, PAGE 632

PREPARED FOR:
CREEKSIDE DEVELOPMENT
130 JEFFRIES ROAD
CANYONVILLE, OREGON 97417

SURVEYOR:
RAYMOND W. WYTCHERLEY
595 SUNNY GLEN WAY
SUNNY VALLEY, OR 97497
541-476-3319

LEGEND:
● INDICATES MONUMENT FOUND AS NOTED.
◆ INDICATES 5/8" IRON RODS SET PER PARTITION PLAT NO. 1997 - 0019.
⊙ INDICATES 5/8" IRON RODS SET PER PARTITION PLAT NO. 1997 - 0058.
△ POINTS NOT MONUMENTED.
() INDICATES RECORD PER PARTITION PLAT NO. 1997-0019.
[] INDICATES RECORD AS NOTED.
BEARINGS ARE BASED UPON PARTITION PLAT NO. 1997 - 0019.

REGISTERED PROFESSIONAL LAND SURVEYOR
Raymond W. Wytcherley
OREGON
JULY 25, 1995
RAYMOND W. WYTCHERLEY
2724
EXPIRES JUNE 30, 1998



SCALE: 1" = 200'