

LAND PARTITION AND COMMON BOUNDARY LINE ADJUSTMENT

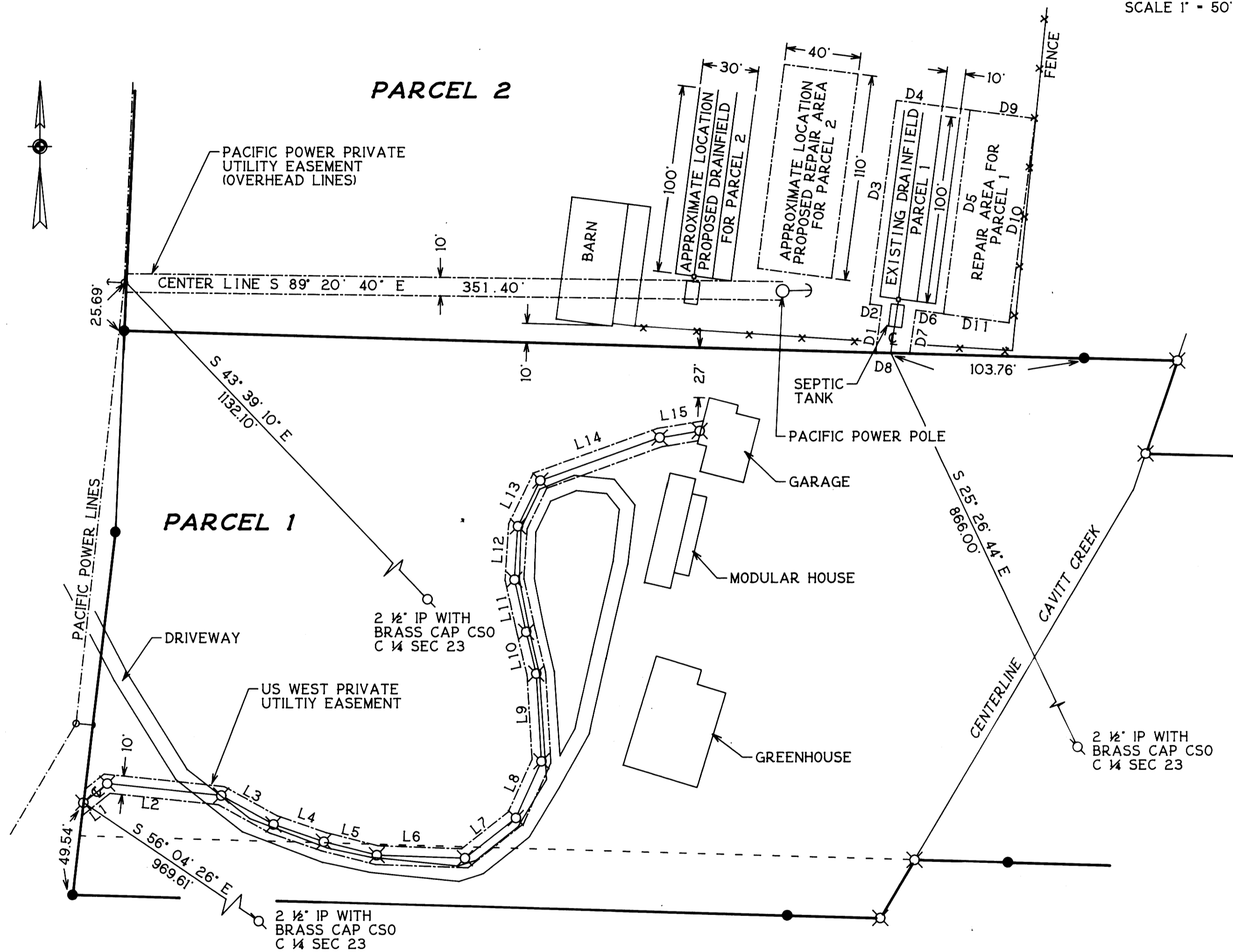
TAX LOT 900, SEC 23B, T27S, R3W, WM
TAX ACCOUNT NO. 8318.22
DOUGLAS COUNTY, OREGON
AUGUST 24, 1995

SCALE 1" = 50'

COUNTY SURVEYORS FILE DATA
DO NOT REMOVE FROM OFFICE

LEGEND

- FOUND I.R. MARKED AS SHOWN
- SET 5/8" X 30" I.R. WITH PLASTIC CAP MARKED M.E. FARR 1181
- ⊗ LOCATION CALCULATED, NO MONUMENT SET
- ⊕ PACIFIC POWER UTILITY POLE AND ANCHOR



PRIVATE UTILITY EASEMENT FOR
EXISTING DRAINFIELD FOR PARCEL 1

LINE	BEARING	DISTANCE
D 1	N 07° 27' 54" E	25.07'
D 2	N 82° 32' 10" W	6.50'
D 3	N 07° 27' 51" E	110.00'
D 4	S 82° 32' 12" E	40.00'
D 5	S 07° 27' 50" W	110.00'
D 6	N 82° 32' 10" W	16.50'
D 7	S 07° 27' 48" W	23.32'
D 8	N 88° 24' 07" W	18.20'

PRIVATE UTILITY EASEMENT FOR
REPAIR AREA FOR PARCEL 1

D 9	S 82° 32' 11" E	35.00'
D 10	S 07° 27' 50" W	110.00'
D 11	N 82° 32' 10" W	35.00'

PUBLIC UTILITY EASEMENT FOR
US WEST COMMUNICATIONS

LINE	BEARING	DISTANCE
L 1	N 51° 20' 11" E	16.34'
L 2	S 84° 02' 20" E	61.50'
L 3	S 61° 14' 25" E	31.98'
L 4	S 71° 03' 47" E	28.51'
L 5	S 75° 50' 36" E	29.26'
L 6	S 88° 00' 16" E	47.26'
L 7	N 51° 42' 06" E	34.71'
L 8	N 24° 18' 34" E	33.34'
L 9	N 03° 24' 31" W	46.98'
L 10	N 13° 36' 53" W	22.93'
L 11	N 12° 41' 23" W	28.53'
L 12	N 03° 43' 43" E	28.64'
L 13	N 26° 08' 54" E	27.24'
L 14	N 70° 04' 52" E	67.85'
L 15	N 80° 24' 14" E	21.56'

Maurice E. Farr

MAURICE E. FARR
PROFESSIONAL LAND SURVEYOR
1960 SW BURDETTE DRIVE
ROSEBURG, OR 97470
PH (503) 679-6598

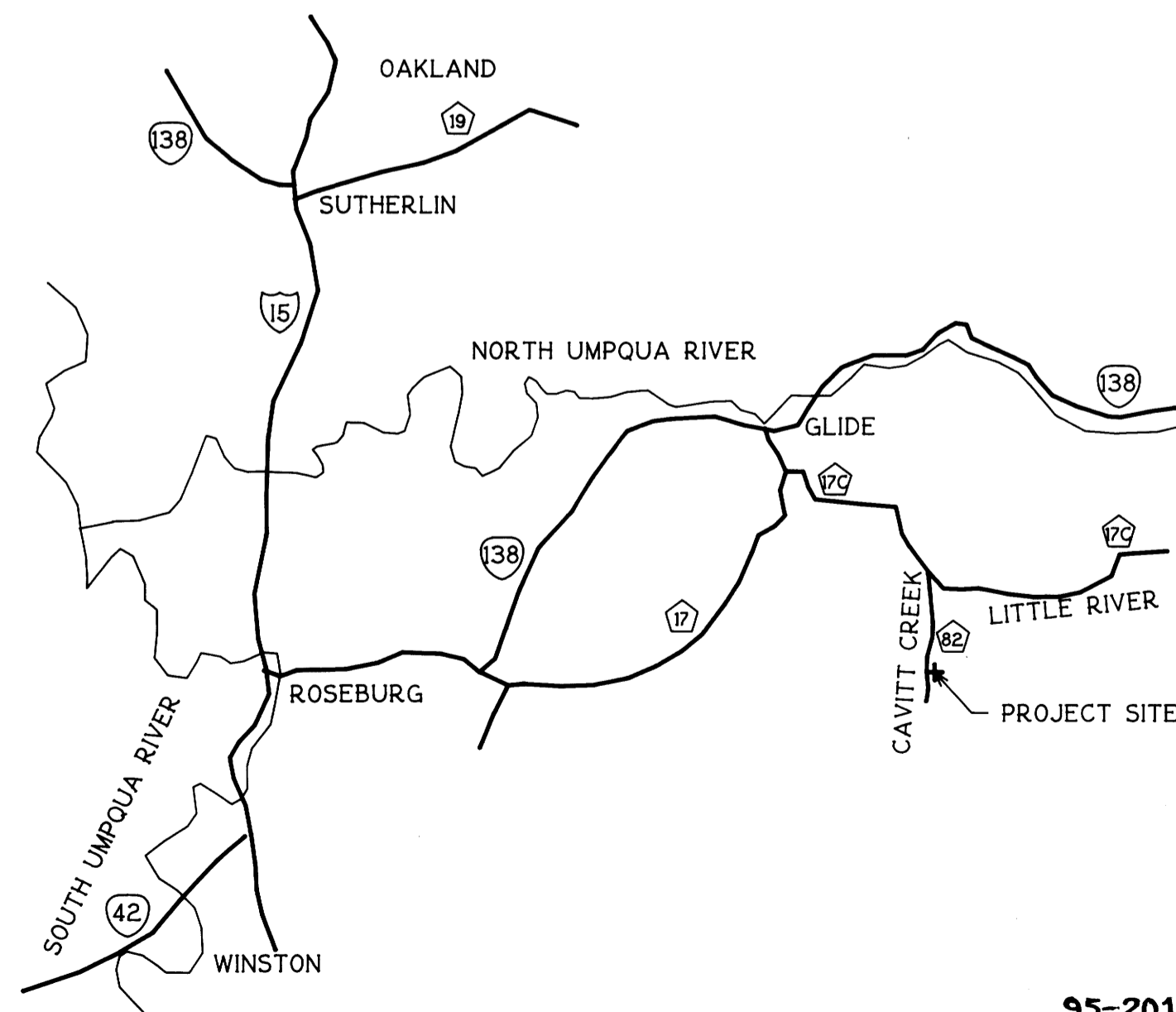
REGISTERED
PROFESSIONAL
LAND SURVEYOR

Maurice E. Farr

OREGON
SEPT. 23, 1977
MAURICE E. FARR
1181

EXPIRES 12-31-95

9-95



95-20120

1995 - 0102 B

1995 - 0102 B